

WORKZONE®



1500W CIRCULAR SAW WITH LASER

Original operating instructions

CUSTOMER SUPPORT



GB 0845 872 2740

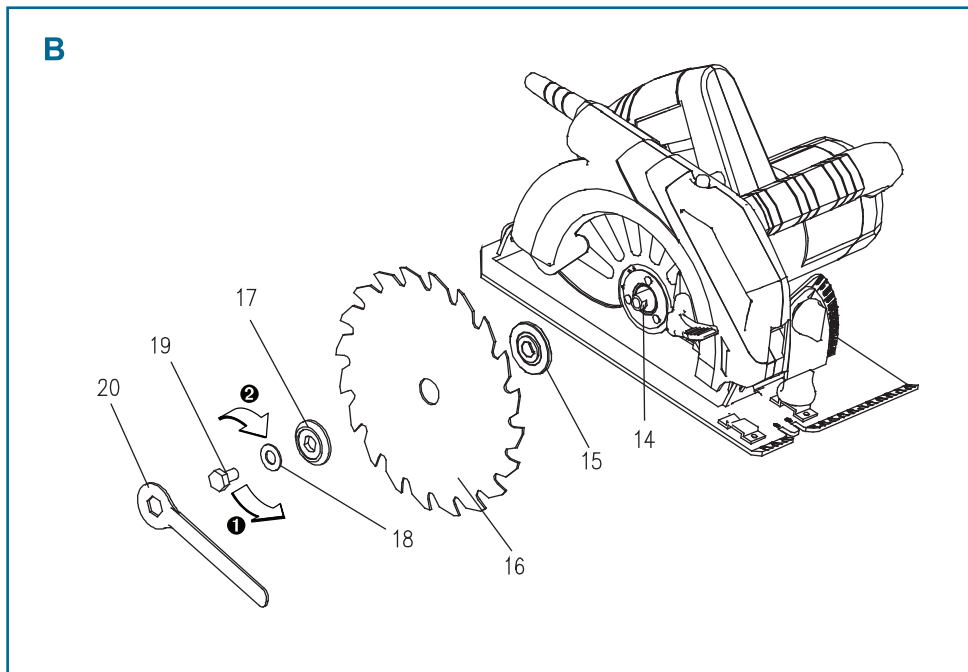
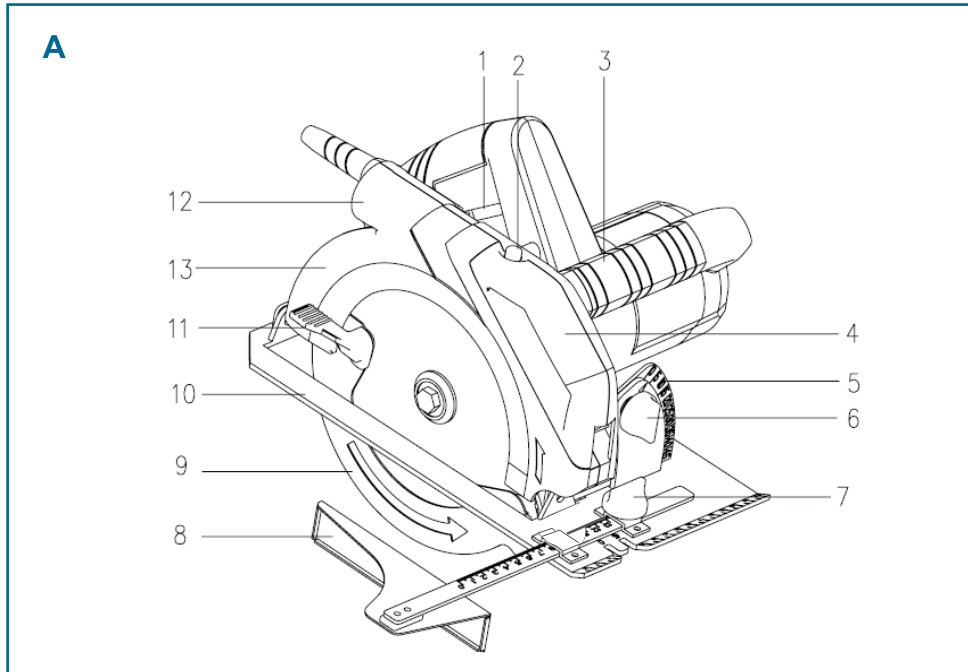
IRL 019022605



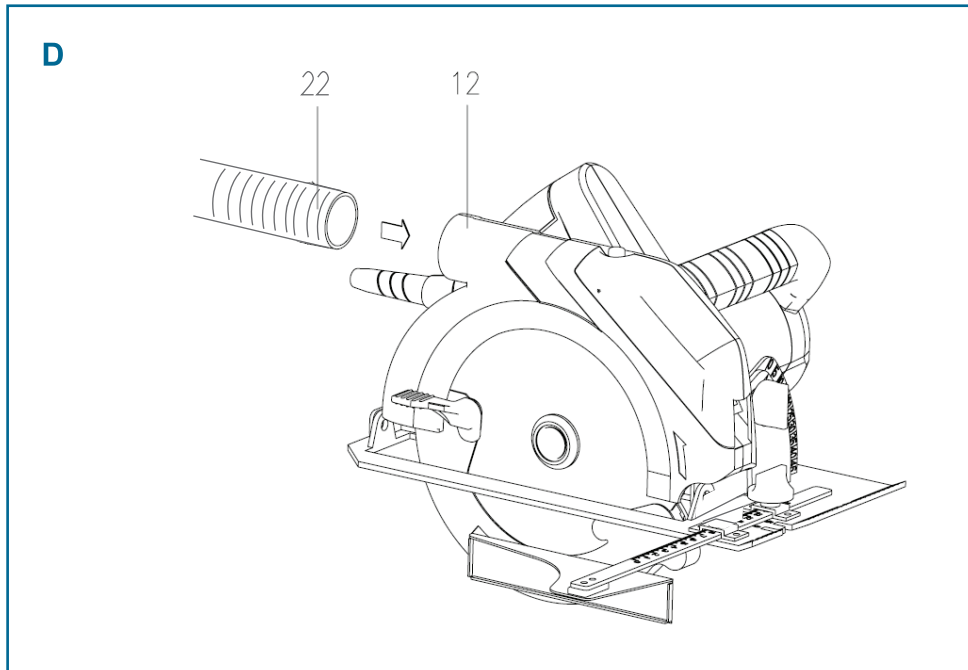
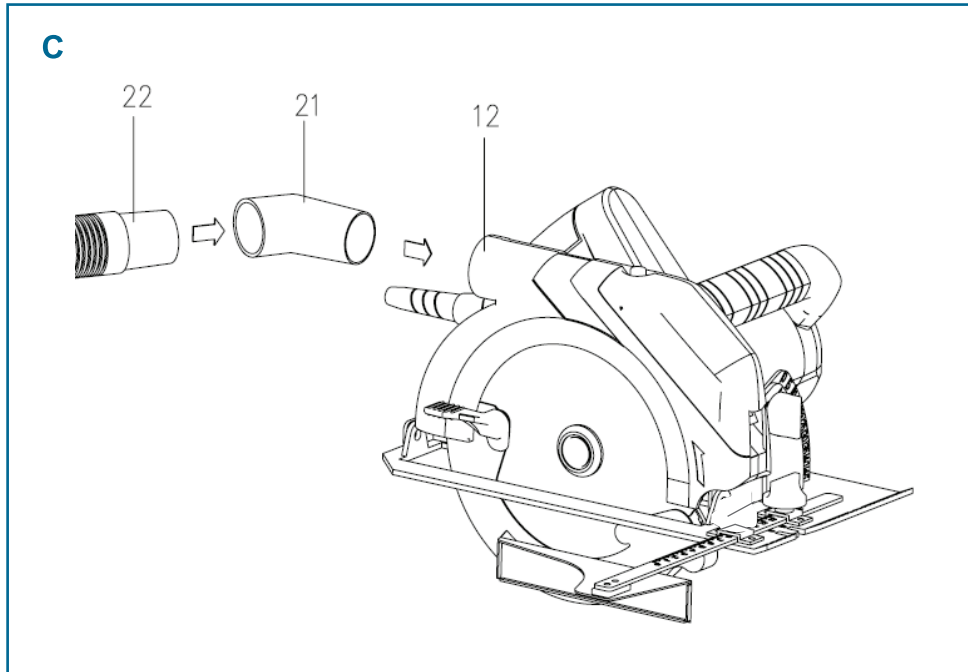
www.sumecservicecentre.co.uk

Model: M1Y-DU10-190 , 08 / 2013, 90704

Figures

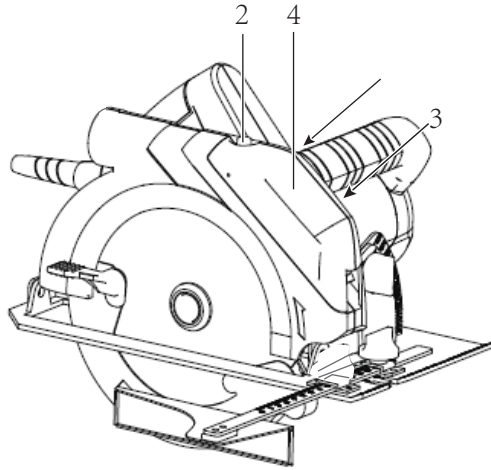


Figures

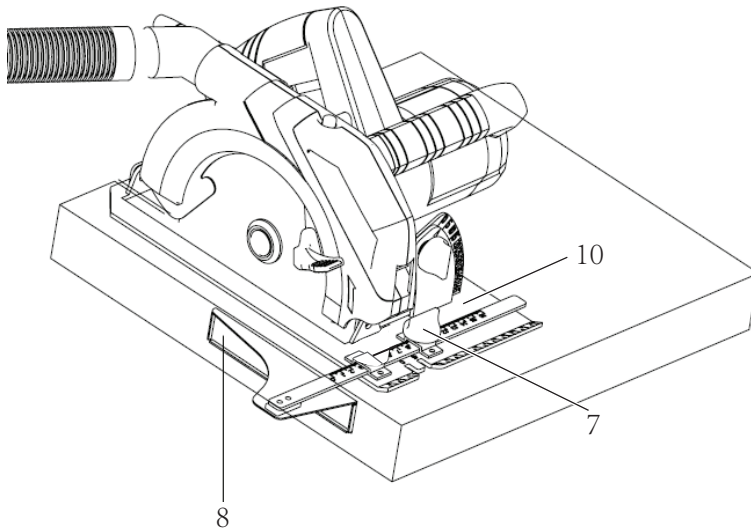


Figures

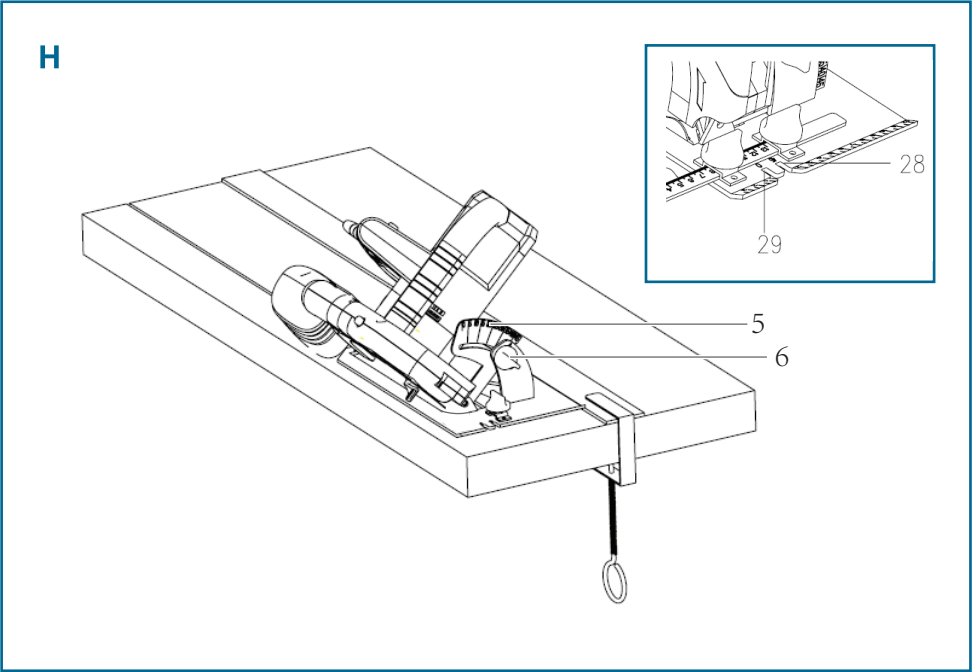
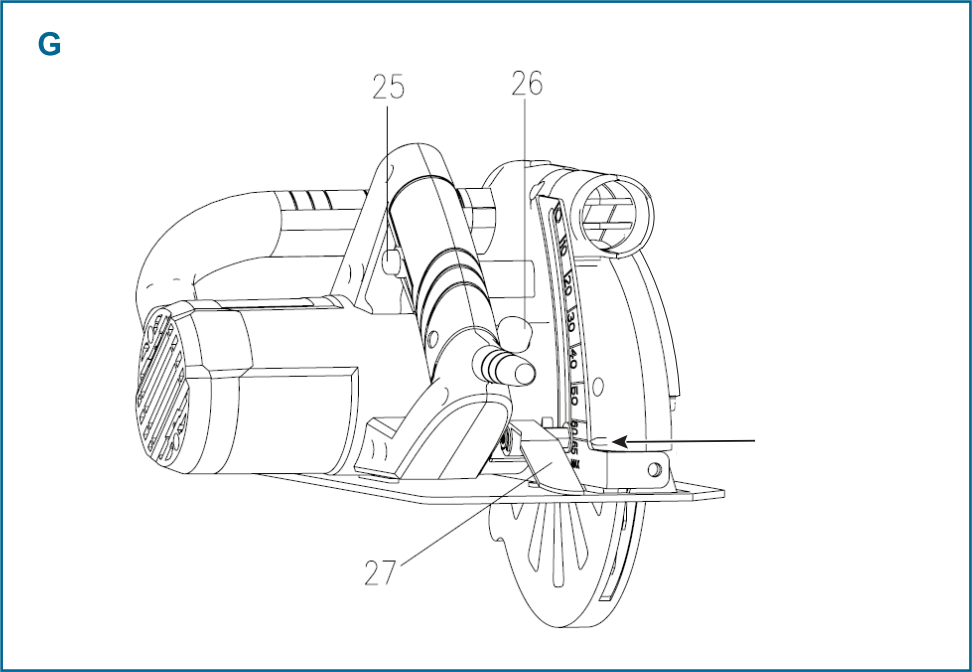
E



F



Figures



Figures

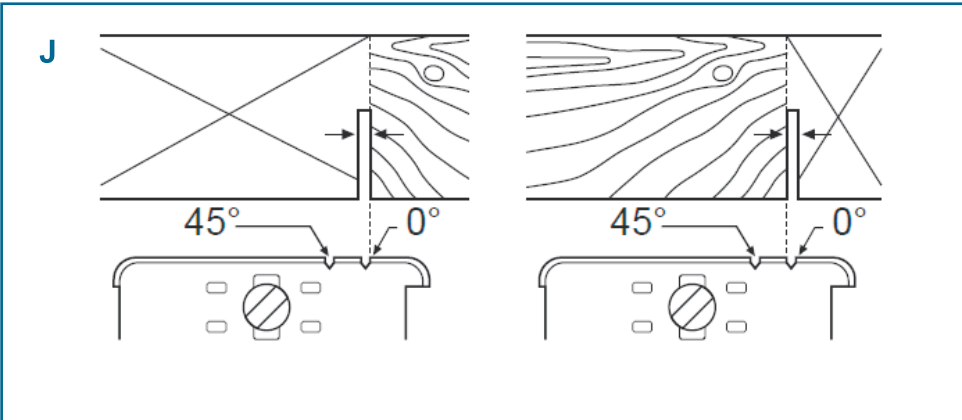
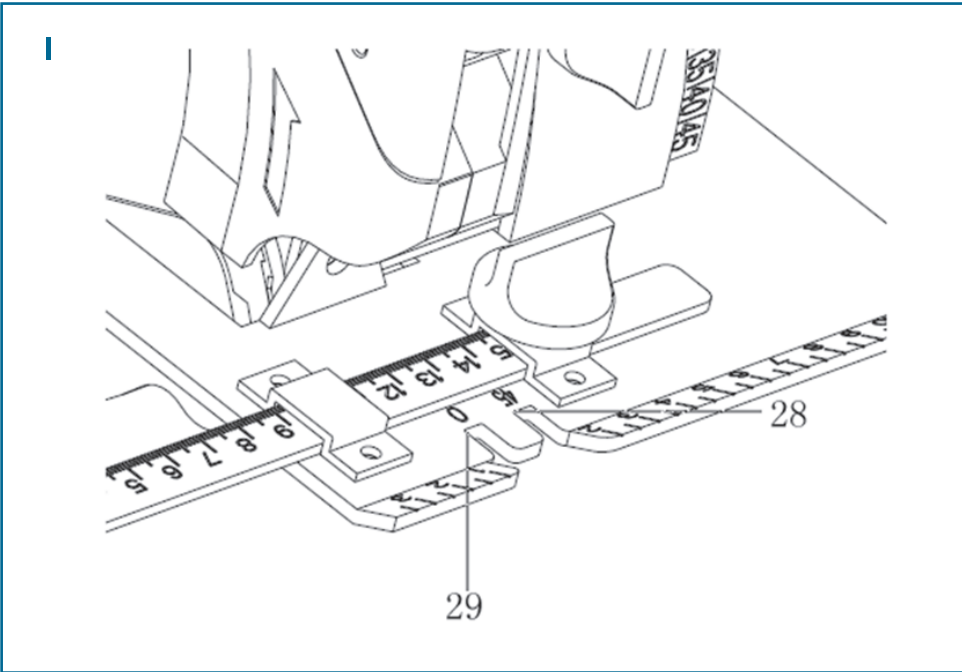


Table of contents

03 Explanation of the symbols

04 Safety instructions

04 General safety instructions for electric power tools

04 1) Workplace safety

04 2) Electrical safety

05 3) Safety of the person

05 4) Use and handling of the electric power tool

06 5) Service

06 Safety instructions for saws

08 Safety instructions for hand-held circular saws

10 Safety instructions for lasers

10 Notes on handling batteries

10 Functional description

11 Intended use

11 Parts supplied

11 Description of parts

12 Technical data

12 Assembly

12 Removing the saw blade

13 Fitting the saw blade

13 Dust and chip extraction

14 External dust and chip extraction

14 Inserting/changing the batteries

14 Setting up

14 Adjusting the parallel guide stop

15 Adjusting the bevel angle

15 Adjusting the cutting depth

15 Laser guidance

15 On/off switch

16 Sawing

16 Recommendations for use

- 16** Maintenance and cleaning
- 17** Inspecting the device
- 17** Disposal
- 17** Service/customer support

- 18** EU declaration of conformity

- 19** Exploded drawing

- 20** Spare parts list

- 21** Warranty card





WARNING

Carefully read the operating instructions and safety information before use.

Explanation of the symbols

1

	Observe the warnings and safety instructions.
n_0	Shaft idle speed
$V\sim$	AC voltage
	Protect the electrical device against humidity.
	Protection category II
	According to the law, the tool may not be disposed of with domestic waste. Devices marked with this symbol must be sent for controlled disposal and taken to specified collection points.
	Batteries may not be disposed of in the normal domestic waste. Every consumer has a legal obligation to take old batteries to a collection point for old batteries at a recycling centre or to a shop selling batteries. Batteries containing a toxic material are additionally marked with the chemical symbol for the toxic material (Hg - mercury, Cd - cadmium, Pb - lead).



Safety instructions

2



WARNING Read all safety notes and instructions.

Failure to observe the safety notes and instructions can lead to an electric shock, fire and/or serious injuries.

- **Keep all safety notes and instructions in a safe place for future reference.** The term “power tool” used in the safety instructions refers to your hand-held circular saw.

General safety instructions for electric power tools

1) Workplace safety

- **Keep your working area clean and well lit.** Untidiness and unlit working areas can lead to accidents.
- **Do not work with the power tool in a potentially explosive environment in which there are flammable liquids, gases or dusts.** Electric power tools generate sparks that can ignite dust or vapours.
- **Keep children and other persons clear while you are using the power tool.** You can lose control of the tool if you are distracted.

2) Electrical safety

- **The connecting plug on the power tool must fit in the socket. The plug must not be modified in any way. Do not use an adaptor plug together with protective earthed electric power tools.** Unmodified plugs and corresponding sockets reduce the risk of an electric shock.
- **Avoid body contact with earthed surfaces such as pipes, heating systems, ovens or refrigerators.** There is an elevated risk of an electric shock if your body is earthed.
- **Keep the power tool out of rain and damp.** Penetration by water into a power tool increases the risk of an electric shock.
- **Do not use the cable incorrectly to carry the electric power tool by, to hang it up or to pull the plug out of the socket. Keep the cable clear of heat, oil, sharp edges and moving equipment parts.** Damaged or twisted cables increase the risk of an electric shock.
- **Only use extension leads approved for use outdoors when using an electric power tool in the open.** The use of an extension cable suitable for outdoor use reduces the risk of an electric shock.



- Use a residual current device if it is not possible to avoid using the electric power tool in a damp environment. The use of an RCD reduces the risk of an electric shock.

3) Safety of the person

- Be attentive, pay attention to what you are doing and be sensible when working with an electric power tool. Do not use the power tool when you are tired or under the influence of drugs, alcohol or medication. A moment of inattentiveness when using a power tool can lead to serious injuries.
- Wear your personal protective equipment and always wear safety goggles. Wearing personal protective equipment, such as a dust mask, non-slip safety shoes, a safety helmet or ear defenders, depending on the nature and use of the electric power tool, reduces the risk of injuries.
- Avoid switching on the tool unintentionally. Make sure that the power tool is switched off before you connect it to the power supply and/or the battery or pick it up or carry it. Accidents can be caused if you keep your finger on the switch when carrying the tool or connect the tool to the power supply when it is switched on.
- Remove adjusting tools or spanners before you switch the tool on. Injuries can be caused if a tool or a spanner is located on a rotating part of the equipment.
- Avoid any abnormal body position. Make sure that you have a secure stance and keep your balance at all times. This will mean you are better able to control the electric power tool in unexpected situations.
- Wear appropriate clothing. Do not wear loose clothing or jewellery. Keep your hair, clothing and gloves away from rotating parts. Loose clothing, jewellery or long hair can be caught by rotating parts.
- Make sure that any dust suction and capture equipment fitted is connected and used correctly. The use of dust extraction can reduce the hazards arising from dust

4) Use and handling of the electric power tool

- Do not overload the tool. Use the electric power tool intended for your work. You will work better and more safely in the performance range specified if you have the appropriate electric power tool.
- Do not use any electric power tool with a faulty switch. An electric power tool that can no longer be switched on or switched off is dangerous and must be repaired.
- Pull the plug from the socket and/or remove the battery before you make any adjustments to the tool, change accessories or put the tool away. This precautionary measure prevents the electric power tool starting unintentionally.

- **Store electric power tools not in use out of the reach of children. Do not allow persons not familiar with the tool or persons who have not read these instructions to use the tool.**
Electric power tools are dangerous in the hands of inexperienced people.
- **Maintain the electric power tool with care. Check that moving parts are working perfectly and not sticking, whether parts have broken or are so damaged that the operation of the electric power tool is impaired. Have damaged parts repaired before using the tool.** Many accidents are caused by poorly maintained electric power tools.
- **Keep cutting tools sharp and clean.** Cutting tools that are looked after and have sharp cutting edges are less likely to bind and are easier to control.
- **Use the power tool, accessories, bits etc. in accordance with these instructions. Take the working conditions and the work to be performed into consideration.** Use of the power tool for operations other than those intended could result in hazardous situations.

5) Service

- **Only have your power tool serviced by a qualified specialist and use only original spare parts.**
This will ensure that the safety of the power tool is maintained.

Safety instructions for saws

Sawing



WARNING Keep your hands away from the cutting area and the blade. Keep your second hand on the auxiliary handle or motor housing.

The saw blade cannot injure your hands if you are using both of them to hold the circular saw.

- **Do not reach underneath the workpiece.** The guard cannot protect you from the blade underneath the workpiece.
- **Adjust the cutting depth to the thickness of the workpiece.** Less than a full tooth height should be visible beneath the workpiece.
- **Never hold the workpiece being sawn in your hands or across your leg.** Secure the workpiece to a stable platform. It is important to support the workpiece properly to minimize the risk of body contact, blade binding or loss of control.
- **Hold the power tool only by the insulated gripping surfaces when performing an operation where the cutting tool can cut hidden wiring or its own power cable.** Contact with a live wire will make the metal parts of the power tool live too and cause an electric shock.

- Always uses a stop or straight edge guide when ripping. This improves the accuracy of the cut and reduces the possibility of the blade binding.
- Always use saw blades of the correct size and with the appropriate arbour hole (e.g. star-shaped or round). Saw blades that do not match the mounting hardware of the saw will run eccentrically, causing loss of control.
- Never used damaged or incorrect saw blade washers or bolts. The blade washer and bolt have been designed especially for your saw, for optimum performance and safety of operation.

Kickback - causes and safety instructions

- Kickback is the sudden reaction to a pinched, bound or misaligned saw blade causing an uncontrolled saw to lift up and out of the workpiece towards the operator.
- If the saw blade is pinched or bound by a kerf closing up, it stalls and the motor reaction drives the saw back towards the operator.
- If the saw blade is twisted or misaligned in the cut, the teeth at the back edge of the saw blade can catch in the surface of the workpiece causing the blade to climb out of the kerf and jump back towards the operator.

Kickback is the consequence of misuse of the saw or incorrect operation. It can be prevented by suitable precautionary measures as described below.

- Hold the saw firmly in both hands and position your arms such that you can absorb kickback forces. Always stand to one side of the saw blade, never stand with your body in line with the blade. In the event of kickback, the circular saw can jump backwards, but the operator can control the kickback forces if proper precautionary measures are taken
- If a saw blade is binding or you need to interrupt your work, switch the saw off and hold it motionless in the workpiece until the saw blade has come to a complete stop. Never try to remove the saw from the workpiece or pull it back while the blade is in motion, otherwise kickback may occur. Determine the cause of the saw blade binding and take corrective action.
- When you wish to restart a saw that has been bound in the workpiece, centre the saw blade in the kerf and check that the saw teeth are not sticking in the workpiece. If the saw blade binds, it can jump out of the workpiece or cause kickback when the saw is restarted.
- Support large panels to avoid the risk of kickback as a result of a binding saw blade. Large panels can sag under their own weight. The panels must be supported on both sides, both close to the kerf and at their edges.

- **Do not use blunt or damaged saw blades.** Blunt or incorrectly set teeth on blades cause increased friction, blade binding and kickback because the kerf is too narrow.
- **Tighten the cutting depth and cutting angle adjustments before commencing a cut.** If a setting changes during cutting, the blade can bind and kickback will occur.
- **Take particular care when cutting into existing walls or other blind areas.** The plunging saw blade can catch on concealed objects while sawing and cause kickback.

Safety instructions for hand-held circular saws

Lower guard function

EN60745-1

- **Check that the lower guard closes properly each time before using the saw. Do not use the saw if the lower guard cannot move freely and does not close immediately. Never clamp or fix the lower guard in the open position.** The lower guard may be bent if the saw is inadvertently dropped. Open the guard with the retracting handle and make sure that it moves freely and does not touch the blade or any other part at all angles and depths of cut.
- **Check the operation of the lower guard spring. Have the saw serviced before using it if the lower guard and spring are not operating perfectly.** Damaged parts, gummy deposits or a build-up of sawdust may mean that the lower guard operates sluggishly.
- **Only retract the lower guard manually for special cuts such as plunge cuts. Open the lower guard by the retracting handle and release the handle as soon as the blade enters the material.** The lower guard must operate automatically in all other sawing tasks
- **Do not put the saw down on the workbench or on the ground unless the lower guard is covering the blade.** An unprotected, coasting blade will cause the saw to walk back along the cut, cutting whatever is in its path. Be aware of the sawblade's run down time.



WARNING This machine generates an electromagnetic field during use.

Under certain circumstances, this field can affect active or passive medical implants. We recommend that persons with medical implants consult their doctor and the manufacturer of the medical implant before using the machine, to reduce the risk of serious or fatal injury.

The vibration emission value has been measured in accordance with a standardized test

method and can be used for the comparison of electric power tools with each other.

The vibration emission value stated can also be used for a preliminary assessment of exposure.



WARNING The vibration emission value can differ from the specified value during the actual use of the electric power tool, depending on the manner in which the power tool is used.

It is necessary to define safety measures for the protection of the operator based on an estimate of the exposure under actual conditions of use (this must take into consideration all the components of the operating cycle, for example periods for which the power tool is switched off, and those in which it may be switched on, but is running under no load).



RESIDUAL RISKS. There will always be residual risks, even if you use this electric power tool as specified. The following hazards can arise as a consequence of the construction and manufacture of this power tool:

Respiratory damage, if no suitable dust mask is worn.

Hearing impairment, if no suitable ear defenders are worn.

Damage to health, arising from hand-arm vibrations if the tool is used over a lengthy period or is not properly guided and maintained.



Wear ear defenders when working with this power tool.



Wear a dust mask when working with this power tool.



WARNING! Dust generated during grinding, sawing, sanding, drilling and other operations can contain chemicals that can cause cancer, birth defects or other damage to the reproductive system. Examples of these chemicals include:

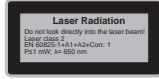
- lead from paints containing lead,
- crystalline silicate from bricks and cement and other masonry products, and
- arsenic and chromium from chemically treated timber.

The risk to which you are exposed from these materials varies depending on the frequency with which you work with them. You can reduce the adverse effect from these chemicals by working in a well ventilated area and with approved protective equipment, such as dust masks.

Safety instructions for lasers



WARNING LASER RADIATION – Do not look into the beam



- a) Do not look directly into the laser beam with the naked eye. Never look directly into the laser beam.
- b) Looking directly into the laser beam – especially with optically concentrating instruments such as a telescope, condenser lenses etc. – can damage the eye.
- c) Never direct the laser beam onto reflecting surfaces or towards people or animals. Even a low-power laser beam can cause damage to the eye.

Notes on handling batteries

- Never recharge batteries. Risk of explosion
- Keep batteries away from children, do not throw them into the fire, short-circuit them or dismantle them.
- Clean battery and device contacts before inserting the battery if necessary.
- Remove expired batteries from the device without delay. There is an increased risk of leaking.
- Do not expose batteries to extreme conditions, e.g. on radiators, direct exposure to sunlight. There is an increased risk of leaking.
- Avoid contact between battery fluid and the eyes and skin. Rinse areas affected by battery fluid with generous quantities of water and consult a doctor without delay.
- Always replace all the batteries at the same time.
- Only use batteries of the same type, do not mix different types or used and new batteries.
- Consult a doctor immediately if a battery is swallowed.
- Make sure that the device is switched off when you have finished using it.
- Remove batteries from the device if it is not to be used for some time.

Function description

3



Read all safety notes and instructions.

Failure to observe the instructions set out below can lead to an electric shock, fire and/or serious injuries.



Intended use

For ripping and cross-cutting in straight lines and bevel cutting, with fixed support, in solid timber, plywood, plastic and lightweight building materials.

Please note that the blade fitted in the saw is only suitable for cutting timber.

Any other use or any modifications of the device are considered to be contrary to the intended use and constitute a significant risk of an accident. The manufacturer is not liable for damage caused by improper use of the tool.

The tool is approved only for domestic use.

Parts supplied

Check that the parts have been supplied. Unpack the tool carefully and check that the following parts have been supplied:

- Hand-held circular saw
 - Saw blade (Ø 190 × Ø 20 × 24T)
 - Saw blade (Ø 190 × Ø 20 × 48T) pre-mounted
 - Elbow connector for external dust extraction
 - Wrench
 - Parallel guide stop
 - 2x R03/AAA, 1.5 V batteries
 - Operating instructions
- Please contact your dealer if any parts are missing or damaged.

Description of the parts

The numbers used for the tool parts refer to the figures on the graphical pages (see figures A to J).

1	Main switch	15	Blade flange
2	Laser on/off switch	16	Saw blade
3	Side handle	17	Clamping washer
4	Battery compartment cover	18	Washer
5	Bevel angle scale	19	Fastening bolt
6	Bevel angle adjustment wing nut	20	Wrench
7	Parallel guide stop wing nut	21	Elbow connector for external dust extraction
8	Parallel guide stop	22	Extraction hose (not supplied)
9	Hinged protective guard	25	Lock-off button
10	Sole plate	26	Spindle lock
11	Hinged protective guard lever	27	Cutting depth adjustment locking lever
12	Sawdust exit	28	Cut guidance notch for 45° cutting angle
13	Protective cover	29	Cut guidance notch for 0° cutting angle
14	Shaft		

Technical data

4

Model designation	M1Y-DU10-190
Mains voltage/frequency	220-240V~ / 50Hz
Rated power Idle speed	1500 W
No load speed	4500 min ⁻¹
for wood working	63 mm at 0° bevel angle 40 mm at 45° bevel angle
Electrical Protection Class	II
pressure level (LpA) Sound	91 dB(A); k = 4 dB
power level (LWA)	102 dB(A); k = 4 dB
Vibration emissions	Idling ah,D = 3.9 m/s ² Uncertainty = 1,5 m/s ²
Saw blade diameter	190mm

Assembly

5



WARNING Make sure that the plug is not connected to the mains and observe the general safety instructions before you assemble the tool.



WARNING Only use the spindle lock button if the plug is not plugged into the mains.

Removing the saw blade (figure B)

- Undo the wing nut (7) and remove the parallel guide stop (8).
- Loosen the depth adjustment locking lever (27) and set the cutting depth to the minimum position "0 mm".

Tighten the depth adjustment locking lever (27) again.



- Loosen the bevel angle adjustment (5) wing nut (6) and set the bevel angle to 0°. Tighten the bevel angle adjustment (5) wing nut (6) again.
- Put the hand-held circular saw down in such a way that the fastening bolt (19) is accessible.
- Rotate the saw blade backwards and forwards slightly while pressing the spindle lock (26) until you hear the lock latch. Hold the push button down and undo the fastening bolt (19) using the wrench (20) supplied, turning it anticlockwise (1).
- Remove the fastening bolt (19), the washer (18) and the clamping washer (17).
- Pull back the hinged protective guard (9) with the lever (11) and carefully remove the saw blade (16).

Inserting the saw blade (figure B)

- Carry out the operations for removing the saw blade in the reverse order to insert it.
- Rotate the saw blade backwards and forwards slightly while pressing the spindle lock (26) until you hear the lock latch. Tighten the fastening bolt (19) using the wrench (20) supplied, turning it clockwise (2).



WARNING The arrow indicating the direction of rotation on the saw blade must match the arrows on the guard (9) and the blade guard (13).



WARNING Use only saw blades the dimensions and maximum permitted speed of which are suitable for this saw. Never use grinding discs on this saw.

Dust extraction (figure C–D)



WARNING Dusts from materials such as lead-containing paint, some types of timber, minerals and metal can be harmful to health. Contact with or inhaling the dusts can produce allergic reactions and/or respiratory tract disease in the user or people in the vicinity.

Certain sawdust, such as oak or beech sawdust is carcinogenic, particularly in conjunction with timber treatment additives (chromate, timber preservatives).

Material containing asbestos may only be worked by specialists.

– Use dust extraction where possible.

– Ensure that the place of work is well ventilated.

– It is recommended that a filter class P2 respiratory protection mask be worn.

Observe the regulations for the materials to be worked valid in your country.

Note: Always use the elbow connector for the external dust extraction (21) when sawing to avoid being injured by ejected chippings.

- The elbow connector for external dust extraction (21) can be used with or without external dust extraction.
- Direct the ejection outlet of the elbow connector (21) in such a way, depending on the sawing job, that you or other persons cannot be injured by ejected chippings.
- Push the elbow connector for external dust extraction (21) firmly into the dust and chippings outlet (12) and make sure that it is firmly seated.

External dust extraction (figures C, D)

- Connect the extraction hose (22) (not supplied) to the elbow connector (21) or directly to the dust and chippings outlet (12).
- Connect the extraction hose to a vacuum cleaner. The vacuum cleaner must be suitable for the material being sawn.
- Use a special vacuum system if you are extracting particularly hazardous, carcinogenic or dry dusts.

Inserting/changing batteries (figure E)

- Open the battery compartment cover (4) by removing the screws next to the side handle (3) (arrowed) with a cross-head screwdriver and remove the cover.
- Remove any flat batteries and dispose of these in a responsible way.
- Insert two new R03/LR03/AAA, 1.5 V batteries in the battery compartment. Pay attention to correct polarity (+/-), as illustrated on the floor of the battery compartment.
- Replace the battery compartment lid and secure it with the two screws.

Setting up

6

Adjusting the parallel guide stop (figure F)

- Slacken the wing nut for the parallel guide stop (7) on the soleplate (10) and push the parallel guide stop (8) into the groove provided.
- Set the parallel guide stop to the desired distance and retighten the wing nut (7).

Adjusting the bevel angle (figure H)

The bevel angle can be set accurately using the bevel angle scale (5) as a guide.

- Loosen the bevel angle adjustment (6) wing nut and set the bevel angle desired against the markings on the bevel angle scale (5).
- Re-tighten the wing nut (6).

Setting the cutting depth (figure G)

- Loosen the depth adjustment locking lever (27) and set the cutting depth desired against the markings on the cutting depth scale (arrow).
- Re-tighten the locking lever (27).

Note: We recommend setting a cutting depth around 3 mm greater than the thickness of the material.

A greater cutting depth gives a cleaner cut.

Laser guide (figure E)

Only switch the laser beam on once the tool is sitting on the workpiece. Press the on/off button (2) to switch the laser on.



CAUTION. Any use of tools or use of the laser unit other than as described in these operating instructions can lead to damage to the eyes.

On/Off switch (figures A, G)

Switch on:

Press the lock-off button (25) and then the mains switch (1), press and hold the mains switch (1).



The hand-held circular saw is equipped with electronic soft starting. The motor starts after a brief delay.

Switch off:

Release the mains switch (1).

Sawing

- Switch the hand-held circular saw on as described under “Switch on” and place the front edge of the soleplate (10) onto the material to be cut without touching it with the rotating saw blade.
- Line up the saw using the parallel guide stop (8), the laser guide or a line you have drawn.
- Always hold the circular saw with both hands and push the saw through the material with appropriate forward pressure.

The M1Y-DU10-190 hand-held circular saw has Intelligent Power Control, a smart constant electronics system.



The constant electronics system ensures a constant speed of rotation whatever the loading on the motor as a result of the hardness of the material or the advance pressure.

Recommendations for use (figures I, J)

- Use the cut guidance notches (28 and 29) depending on the cut angle chosen: Right-angled cut = 0° marking, bevel = 45° marking.
- You can prevent material chipping away along the cut line when cutting sensitive materials, e.g. laminated fibre boards or veneered door leaves, by sticking masking tape along the line. In addition, a cutting line drawn on the rough background of the masking tape easier to see than a line drawn on the smooth surface of the workpiece to be cut.
- An optimum cutting result may be achieved by fixing a thin timber lath on the cutting line with G-clamps and cutting this together with the workpiece.
- Take care when cutting to avoid overheating the saw teeth tips. This leads to excessive wear of the saw blade and burn marks on the material.
- When cutting plastics, avoid melting the plastic as this could smear onto the saw blade and hinder clean cutting.

Maintenance and cleaning



WARNING. Unplug the saw at the mains before starting maintenance work on the saw.



- Keep the saw and the ventilation slot clean to ensure safe and correct working.
- Regularly check whether dust or foreign bodies have got into the openings around the motor and the switch. Use a soft brush to clear accumulated dust. Wear safety goggles when cleaning the tool.
- Clean the tool's casing with a soft, damp cloth. You can use a mild detergent, but do not use alcohol, spirit or other cleaners.
- Never use a solvent to clean plastic components.
- Lubricate all moving parts regularly.



WARNING. The electric power tool must never come into contact with water.

Inspecting the device

Check all fastenings regularly. These can come loose over time because of the vibration.

Disposal



Do not dispose of the packaging in your household waste.

The packaging is entirely made from recyclable materials. Dispose of the packaging in the appropriate recycling container.



Do not dispose of electric power tools in your household waste.

According to the law, products marked with this symbol must be sent for controlled disposal. Information regarding suitable disposal points may be had from your local authority or a waste disposal company.



Batteries may not be disposed of in the normal domestic waste.

Every consumer has a legal obligation to take old batteries to a collection point for old batteries at a recycling centre or to a shop selling batteries. Batteries containing a toxic material are additionally marked with the chemical symbol for the toxic material (Hg - mercury, Cd - cadmium, Pb - lead).

Service/customer support

Only have your power tool serviced by a qualified specialist and use only original spare parts. This will ensure that the safety of the power tool is maintained.

Please contact our service partner if you have any queries or wish to order parts: Sertronics GmbH

MEROTEC Service Center

Ostring 60

66740 Saarlouis, Germany

Fax: +49 6831 4880 820

Email:merotec@sertronics.de

EU DECLARATION OF CONFORMITY

We
MEROTEC GmbH
Graf-Recke-Strasse 82, 40239 Düsseldorf, Germany
Hereby declare that our product:

1500W CIRCULAR SAW WITH LASER
Model number: M1Y-DU10-190

complies with the essential industrial health and safety requirements in
accordance with the following directives:

EMC Directive: 2004/108/EC
Machinery Directive: 2006/42/EC
Low Voltage Directive: 2006/95/EC
RoHS Directive 2011/65/EU

The standards applicable in this context:

EN 60745-1: 2009
EN 60745-2-5: 2007 + A11: 2009
EN 60825-1: 2007
EN 55014-1: 2006 +A1:2009+A2:2011
EN 55014-2: 1997/ + A1: 2001/ + A2: 2008
EN 61000-3-2: 2006 +A1:2009+A2:2009
EN 61000-3-3: 2008

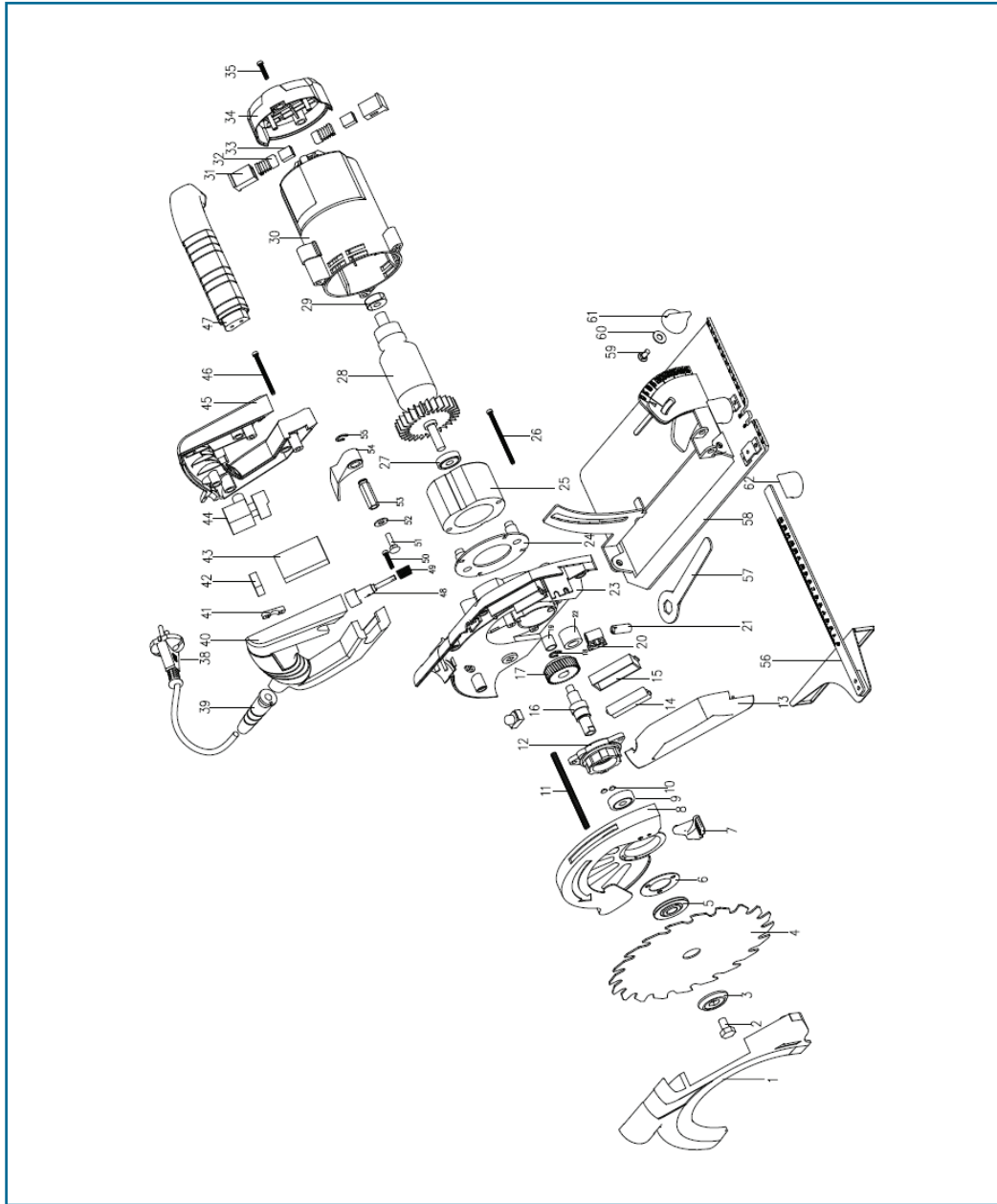
Legally valid signature
2013-06-01
Signature:



Name: Thorsten von der Heyde
General Manager
MEROTEC GmbH



Exploded drawing



Spare parts list

No.	Description	No.	Description
1	Right-hand blade guard	31	Brush holder
2	Fastening bolt	32	Carbon brush
3	Clamping washer	33	Brush holder
4	Saw blade	34	Motor cover
5	Adapter flange	35	Self-tapping screw
6	Securing ring	38	Cable with connector
7	Hinged protective cover lever	39	Cable bushing
8	Hinged protective cover	40	Right-hand handle half
9	Ball bearings (6001)	41	Fastening clip
10	Bolt	42	Anti-interference capacitor
11	Tension spring	43	Constant electronics module
12	Soleplate	44	Mains switch
13	Battery compartment cover	45	Left-hand handle half
14	Battery for laser	46	Self-tapping screw
15	Battery compartment	47	Side handle
16	Shaft	48	Spindle lock button
17	Gear wheel	49	Spring
18	Securing ring	50	Bolt
19	Needle bearings	51	Pin
20	Laser mount	52	Washer
21	Laser	53	Bearing bush
22	Stop	54	Locking lever
23	Left-hand blade guard	55	Retaining ring
24	Coil bracket	56	Parallel guide stop
25	Coil winding	57	Wrench
26	Self-tapping screw	58	Soleplate
27	Ball bearings (6000)	59	Pin
28	Armature	60	Washer
29	Ball bearings (608)	61	Bevel angle adjustment wing nut
30	Motor casin	62	Parallel guide stop wing nut

The warranty period is three years and begins on the day of purchase. Please retain your receipt as your proof of purchase.

Faulty hand-held circular saws can be sent to the service address given below. You will then receive a new or repaired saw free of charge.

Please call our service centre on the telephone number below before you send the tool in for repair. You will be able to obtain from them a returns sticker to allow you to send your tool in free of charge.

Even if the warranty period has expired, you are able to send your faulty tool in to the address below.

Your information:

Name _____

Address _____



_____ E mail _____

Date of purchase* _____

* We recommend that you keep the receipt with this warranty card.

Place of purchase _____

Description of fault:

Send the completed warranty card to:

**Units A,B
Escrick Business Park
Escrick
York
YO19 6FD**

**E-mail:
support@coreservice.co.uk**

CUSTOMER SUPPORT



GB 0845 872 2740

IRL 019022605

Model: M1Y-DU10-190 , 08 / 2013, 90704

3

YEARS WARRANTY

IMPORTED BY:
MEROTEC GmbH
Graf-Recke-Strasse 82
40239 Düsseldorf, Germany