



ORIGINAL INSTRUCTION MANUAL

800W

Electric Rotovator

TLEG05A(S80R0)



Important - Please read these instructions fully before starting assembly

These instructions contain important information that will help you get the best from your rotovator, ensuring it is assembled correctly and safely. If you need help or have damaged or missing parts, call the Customer Helpline on 0345 605 2067

**AFTER SALES SUPPORT
0345 605 2067**

San No.: 0321/8009/58ZF

SPEAR & JACKSON SINCE 1760

For more than 250 years gardeners have enjoyed high quality performance and great results using Spear & Jackson tools.

Our garden power tools combine continuous innovation and the latest in manufacturing technologies with a proud heritage.

Each product is carefully designed with performance, comfort and durability firmly in mind, which has earned Spear & Jackson an enviable reputation as a maker of tools to trust.

3 YEAR GUARANTEE

As a testament to the quality of our products, we offer a 3 year manufacturers warranty and a comprehensive after sales service.

The warranty covers manufacturing faults, however in the event that the item has been deliberately damaged, used in a commercial environment or disassembled then the warranty will be null and void.

Please retain proof of purchase.

7 DAYS A WEEK TECHNICAL SUPPORT

We want you to get the best out of our products. Our easy-to-read instruction manual guides you with best practice use and maintenance tips. Please call **0345 605 2067** for technical support, we can solve around 80% of questions directly over the phone.

We hope you enjoy your product and we look forward to any feedback, as this allows us to develop even better products in the future.

CONTENTS

Safety Information	04
Description of symbols	04
Safety warnings	05
Safe operating practices for electric Rotovator	05
Service	09
Recommendation	09
Intended use	10
Emergency	10
Residual risks	11
Vibration and noise reduction	12
Box Contents / Parts	13
Assembly	14
Unpacking	14
Assembling the frame	14
Assembling the handles	15
Clamping the cable with cable clip	15
Preparation	16
Connecting the extension cord to a suitable socket	17
Switching on/off	17
Operation	18
Maintenance and repair	19
General	19
Cleaning the device	20
Storage	21
Transportation	21
Recycling and disposal	21
Technical Data	22
Troubleshooting	24
Warranty	25

SAFETY INFORMATION

Please read these instructions fully before operating or maintaining your machine

DESCRIPTION OF SYMBOLS

The following warning symbols appear throughout this manual and indicate the appropriate safety measures you should take when operating and maintaining the rotovalor.



Caution/Warning



Read operator's manual



There is a risk that some objects could be thrown out by the machine. Keep bystanders away.



Rotating parts may cause serious injury. Make sure the blades come to a complete stop before transporting the machine or before inspecting, cleaning, or conducting any other maintenance.



Beware of sharp blades. Blade continue to rotate after the motor is switched off. Remove plug from mains before maintenance or if cord is damaged.



Keep the supply flexible cord away from cutting means.



Do not expose and operate the product to rain or wet conditions.



Wear eye protection



Wear hearing protection



Wear protective gloves



Wear protective, slip-resistant footwear



Wear respiratory protection



Guaranteed sound power level value in 93 dB



WEEE symbol. Waste electrical products should not be disposed of with household waste. Please recycle where facilities exist. Check with your local authority or retailer for recycling device.



The product complies with the applicable European directives and an evaluation method of conformity for these directives was done.



This product is of protection class II. That means it is equipped with enhanced or double insulation.

SAFETY INFORMATION

Please read these instructions fully before operating or maintaining your machine

SAFETY WARNINGS



WARNING!

These instructions are for your safety. Please read through them thoroughly before use and retain them for future reference.



WARNING!

Read all safety warnings and all instructions. Failure to follow the warnings and instructions may result in electric shock, fire and/or serious injury. Carefully read the instructions for the safe operation of the machine. Save all warnings and instructions for future reference

- This appliance **MUST NOT** be used by children and persons with reduced physical, sensory or mental capabilities, or lack of experience and knowledge, unless

they have been given supervision or instruction concerning use of the appliance by a person responsible for their safety.

- Local regulations can restrict the age of the operator.
- Children should be supervised to ensure that they do not play with the appliance.

SAFE OPERATING PRACTICES FOR ELECTRIC ROTOVATOR



IMPORTANT!

**READ CAREFULLY BEFORE USE
KEEP FOR FUTURE REFERENCE**

SAFETY INFORMATION

Please read these instructions fully before operating or maintaining your machine

TRAINING

- Read the instructions carefully. Be familiar with the controls and the proper use of the equipment.
- Never allow children or people unfamiliar with these instructions to use this machine. Local regulations can restrict the age of the operator.
- Never operate the machine while people, especially children, or pets are nearby.
- Keep in mind that the operator or user is responsible for accidents or hazards occurring to other people or their property.

PREPARATION

- While operating the machine always wear

substantial footwear and long trousers. Do not operate the machine when barefoot or wearing open sandals. Avoid wearing clothing that is loose fitting or that has hanging cords or ties.

- Thoroughly inspect the area where the machine is to be used and remove all objects which can be thrown by the machine.
- Before using, always visually inspect to see that the blade, blade bolt and the blade assembly are not worn or damaged. Replace worn or damaged components in sets to preserve balance. Replace damaged or unreadable labels.
- Before use check the supply and extension cord for signs of damage or aging. If the cord becomes

SAFETY INFORMATION

Please read these instructions fully before operating or maintaining your machine

damaged during use, disconnect the cord from the supply immediately. **DO NOT TOUCH THE CORD BEFORE DISCONNECTING THE SUPPLY.** Do not use the machine if the cord is damaged or worn.

OPERATION

- Operate the machine only in daylight or in good artificial light.
 - Always be sure of your footing on slopes.
 - Walk, never run.
 - For wheeled rotary machines, work across the slopes, never up and down.
 - Exercise extreme caution when changing direction on slopes.
 - Do not work on
- excessively steep slopes.
 - Use extreme caution when reversing or pulling the machine towards you.
 - Do not change the motor governor settings or over speed the motor
 - Never operate the machine with defective guards or shields, or without safety devices.
 - Switch on the motor carefully according to instructions and with feet well away from the cutting mean(s).
 - Do not start the machine when standing in front of the discharge opening.
 - Do not put hands or feet near or under rotating parts. Keep clear of the discharge opening at all times.
 - Do not transport the machine while the cutting

SAFETY INFORMATION

Please read these instructions fully before operating or maintaining your machine

blade is running.

- Stop the machine, and remove plug from the socket or other disabling device. Make sure that all moving parts have come to a complete stop.

- whenever you leave the machine;
- before clearing blockages or unclogging chute;
- before checking, cleaning or working on the machine;
- after striking a foreign object. Inspect the machine for damage and make repairs before restarting and operating the machine.

- If the machine starts to vibrate abnormally (check immediately)

- inspect for damage;

- replace or repair any damaged parts;
- check for and tighten any loose parts.

MAINTENANCE AND STORAGE

- Keep all nuts, bolts and screws tight to be sure the machine is in safe working condition.
- On machines with multi blades, take care as rotating one blade can cause other blades to rotate.
- Be careful during adjustment of the machine to prevent entrapment of the fingers between moving blades and fixed parts of the machine.
- Always allow the machine to cool down before storing.
- When servicing the blades be aware that, even though

SAFETY INFORMATION

Please read these instructions fully before operating or maintaining your machine

the power source is switched off, the blades can still be moved.

- Replace worn or damaged parts for safety. Use only genuine replacement parts and accessories.

SERVICE

- Have your machine repaired by an authorized service agent. This machine is manufactured in accordance with the relevant safety regulations. To avoid danger, equipment must only be repaired by qualified technicians.
- Only use parts and accessories made for this machine by the manufacturer. Failure to do so can result in personal injury.

RECOMMENDATION

- The machine should be supplied via a residual current device (RCD) with a tripping current of not more than 30 mA.
- If the supply cord is damaged, it must be replaced by the manufacturer, its service agent or similarly qualified in order to avoid a hazard.
- Do not expose the machine to rain or wet conditions. Water entering the machine will increase the risk of electric shock.
- Supply cords shall not be lighter than
 - if rubber insulated, ordinary tough rubber sheathed flexible cord (code designation H05 RN-F)

SAFETY INFORMATION

Please read these instructions fully before operating or maintaining your machine

- if polyvinyl chloride insulated, ordinary polyvinyl chloride sheathed flexible cord (code designation H05 VV-F)

- This product is intended for private domestic use only, not for any commercial trade use. It must not be used for any purposes other than those described.

INTENDED USE

- This product designated for small gardens and flower beds, this device effectively loosens and turns over new soil. It may also be used to mix coarse soil with fertilizer, peat, and compost. This product may not be used to till extremely dry or wet soil. The use of this product in rain or wet conditions is prohibited.
- For safety reasons it is essential to read the entire instruction manual before first operation and observe all the instructions therein.

EMERGENCY

WARNING!

Familiarize yourself with the use of this machine by means of this instruction manual. Memorise the safety directions and follow them to the letter. This will help to prevent risks and hazards.

- Always be alert when using the machine, so that you can recognize and handle risks early. Fast intervention can prevent serious injury and damage to property.
- Switch off and disconnect from the power supply if

SAFETY INFORMATION

Please read these instructions fully before operating or maintaining your machine

there is any malfunction. Have the machine checked by a qualified specialist and repaired, if necessary before you put it into operation again.

RESIDUAL RISKS

WARNING!

Even if you are operating the machine in accordance with all safety requirements, potential risks of injury and damage remain. The following dangers can arise in connection with the structure and design of this machine:

- Health defects resulting from vibration emission if the machine is being used over long periods of time or not adequately managed and properly maintained.

■ Injuries and damage to property due to broken application tools or sudden impact of hidden objects during use.

■ Danger of injury and property damage caused by flying objects. Do not abuse the cord. Never use the cord for carrying, pulling or unplugging the machine. Keep the cord away from heat, oil, sharp edges or moving parts. Damaged or entangled cords increase the risk of electric shock.

WARNING!

This machine produces an electromagnetic field during operation! This field may under some circumstances interfere with active or passive medical implants! To reduce the risk of serious or fatal injury, we recommend persons with

SAFETY INFORMATION

Please read these instructions fully before operating or maintaining your machine

medical implants to consult their doctor and medical implant manufacturer before operating this product!

VIBRATION AND NOISE REDUCTION

To reduce the impact of noise and vibration emission, limit the time of operation, use low-vibration and low-noise operating modes as well as wear personal protective equipment.

Take the following points into account minimize the vibration and noise exposure:

- Only use the machine as intended by its design and these instructions.
- Ensure that the machine is in good condition and well maintained.
- Use the correct cutting

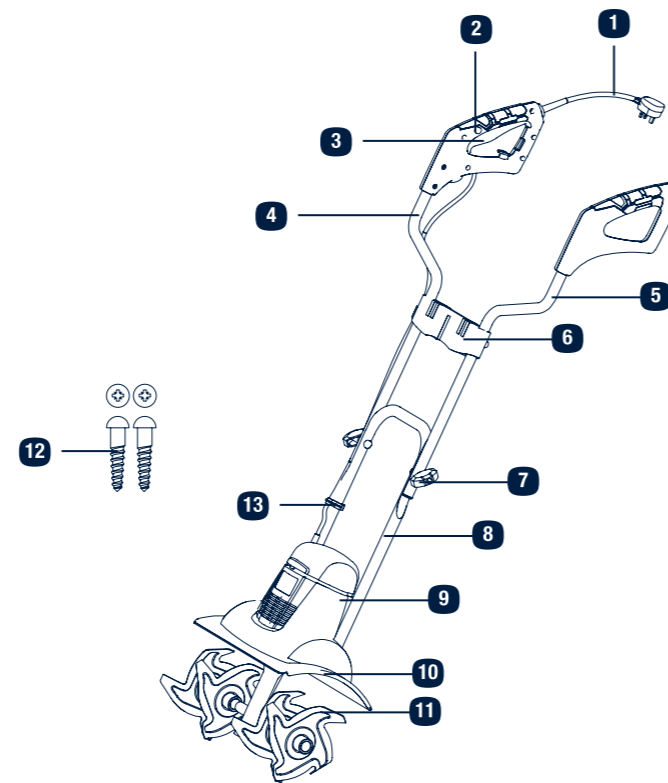
device for the machine and ensure they in good condition.

- Keep tight grip on the handles/gripping surface.
- Maintain this machine in accordance with these instructions and keep it well lubricated(where appropriate).
- Plan your work schedule to spread any high vibration tool use across a longer period of time.

BOX CONTENTS

PARTS

- | | |
|-------------------------------|---------------------|
| 1 Cable and plug | 8 Lower handle |
| 2 Lock button | 9 Motor housing |
| 3 Switch trigger | 10 Safety guard |
| 4 Right handle | 11 Blade 4pcs |
| 5 Left handle | 12 Screws 2pcs |
| 6 Frame | 13 Cable clip, 1 pc |
| 7 Fixing knobs and bolts 2pcs | |



If there are any parts missing, please call the customer helpline on 0345 605 2067

ASSEMBLY

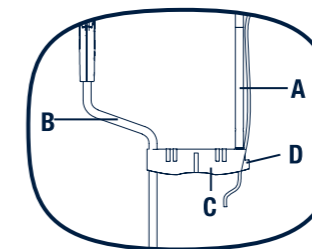
1 Unpacking

Warning! Wear proper protective gloves.

- Unpack all parts and lay them on a flat, stable surface.
- Remove all packing materials and shipping devices if applicable. Box should be kept for duration of warranty.
- Make sure the delivery contents are complete and free of any damage. If you find that parts are missing or show damage do not use the product but contact your dealer. Using an incomplete or damaged product represents a hazard to people and property.
- Ensure that you have all the accessories and tools needed for assembly and operation. This also includes suitable personal protective equipment.

2 Assembling the frame

Slide the right (A) and left-hand handles (B) into the frame (C). Secure the frame to the left and right-hand handles with the included screws.

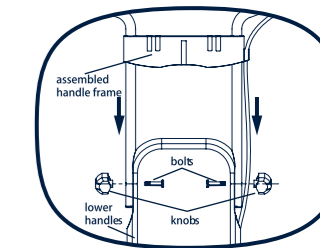


NOTE: Use a Philips-head screwdriver. Aligning the holes may be difficult. We recommend fastening one hand grip at a time to the frame.

ASSEMBLY

3 Assembling the handles

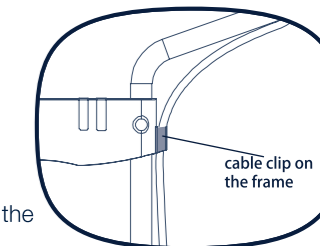
Align the assembled handle frame with the lower handle. Use the nuts and knobs to fix the assembled handle frame and lower handles firmly together.



NOTE: Make sure that the control handle is on the side of the cable holder of the connectors.

4 Clamping the cable with cable clip

Clamp the cable in the cable clip on the frame.



Secure the power cable to the lower handle by using the cable clips

WARNING! Before switching the tool on, make sure that the tool is not touching any other objects and hold it firmly in both hands. Always keep a firm grip on the tool with both hands and watch your feet. The blades may cause an accident. Be careful while moving backwards danger of tripping! Do not touch the gearbox, as there is a may become hot during operation – danger of burns!

PREPARATION



WARNING! Read all of the instructions in this manual before attempting to connect the power supply to your tool.



WARNING! If the insulation on a power cable or extension lead is found to be cut or damaged, do not touch it! Disconnect the power supply immediately and have the damaged cable replaced by authorised service agent.



WARNING! If operating the appliance in a damp location is unavoidable, use a residual current device(RCD) protected supply. Use of an RCD reduces the risk of electric shock.



WARNING! Use only extension cords suitable for outdoor use, preferably with a high visibility cable colour.

Always unwind all extension cables fully, coiled cables can overheat and reduce the efficiency of your product.

NOTE! For extension cables up to 15metres, use a wire cross section of 1.5mm². For extension cables over 15 meters but less than 40 meters, use a wire cross section of 2.5 mm².



WARNING! This product is designed to operate on 230-240 VAC 50Hz. The voltage and current must comply with the information on the ratings label!

NOTE! This electric rotovator is fitted with a non-rewireable plug. If it is necessary to change the fuse in the plug, the fuse cover becomes lost or damaged, the plug must not be used until a suitable replacement is obtained.



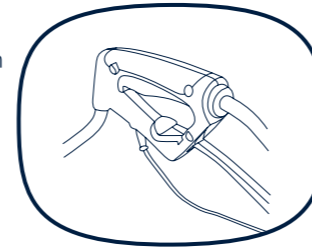
WARNING! A 13amp fuse must be fitted.

WARNING! Make sure the on/off switch is in its off position.

PREPARATION

1. Connecting the extension cord to a suitable socket

Double the extension cord, about a foot from the end. Push the loop through the hole on the rear safe guard and hook the loop over the cord restrainer. Gently pull on the cord to ensure that it is firmly attached at the handle. Connect the cable to a proper socket.



WARNING! Always wear safety gloves when doing any work on the electric rotovator. Always unplug the power cord from the power source before doing any work on the electric rotovator.

2. Switching on/off



WARNING! Rotating blades may cause serious injury. The blades will continue to turn for a few seconds after the tool has been switched OFF. Do not touch the rotating blades.

Switching on

1. Press the lock button (A).
2. Hold the switch trigger (B) and release the switch button (A).

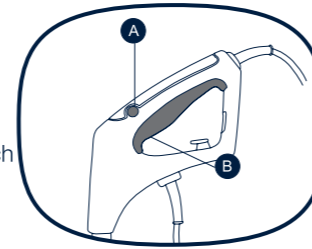
Switching off

Release the switch trigger (B).

Note! For your safety, this tool is equipped with a double switch system. This system prevents starting the tool inadvertently.

You must press the switch button (A) firstly, and then hold the switch trigger (B).

Never attempt to hold the switch trigger without pressing the lock button first!



OPERATION



WARNING! Do not touch the gearbox, as it may become hot during operation.



WARNING! Always keep a firm grip on the tool with both hands and watch your feet. The blades may cause an accident. Be careful while moving backwards –danger of tripping!



WARNING! To avoid damage to the tool:

Never lift or drag the tool with the motor running.

Lift the tool while moving it over hard surfaces such as tiles or steps.

NOTE: Switch the tool off after working with it and for transport; disconnect from the mains and wait for the blades to stop moving.

- i. Walk the tool through the soil at normal pace and in as straight a line as possible.
- ii. Always work away from the mains socket. Make sure that the cable is kept well away from the working area.
- iii. **OVERLOAD Protection:** The motor will cut out immediately if overloaded. The tool cannot be used until it has completely cooled down again. Turn off the machine. When the machine is completely cool down, restart it again.

MAINTENANCE AND REPAIR



WARNING! Always switch the product off and let the product cool down before performing inspection, maintenance and cleaning work!

General

- Clean the product with a slightly damp cloth and pH-neutral soap. Use a brush for areas that are hard to reach.
- In particular clean the air vents after every use with a cloth and brush.
- Remove stubborn dirt with high pressure air (max. 3 bar).
- Check for worn or damaged parts. Replace worn parts as necessary or contact an authorised service centre for repair before using the product again.
- Regularly check for obvious defects such as loose, dislodged or damaged cutting devices, loose fixings and worn or damaged components.
- Check that safety guards are undamaged and correctly fitted. Carry out necessary maintenance or repairs before using the product.



WARNING! Wear safety gloves when working on the cutting blades and close to them!

IMPORTANT! The tool is fitted with four tine wheels (blades) that can easily be changed in pairs. Both of the tine wheel pairs can be fitted on the left or right, as required. Purchase the blades from authorised service centre.

WARNING! Make sure that the blades (d) are set to their proper turning direction. The arrows on the gearbox and blades should point the same way.

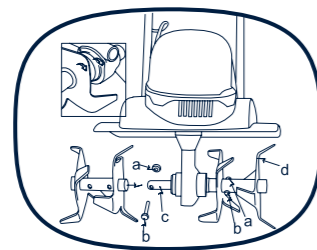
MAINTENANCE



WARNING! Unexpected tine movement may cause personal injury. Before servicing, repairing, or inspecting the unit, turn the motor OFF and disconnect the power. Wait for the tines to completely stop rotating before conducting inspection, cleaning, or maintenance. Before and after each use, check the product and accessories (or attachments) for wear and damage. When necessary, only use identical replacement parts that are approved by the manufacturer.

WARNING! Contact with hot components (e.g. motor housing, gear box, etc.) on the machine may cause burns. Allow the machine to cool off before handling.

- Unscrew the hex bolt (b) and the self-locking nut (a) on the tine wheel pair (d).
- Slide the tine-wheel pair off the driveshaft (c).
- Clean the driveshaft with biological oil.
- Slide the new blades onto the driveshaft with the holes on the axles aligned to the holes on the driveshaft (c).
- Slide the hex bolt (b) through the hole and tighten on the self-locking nut(a).



Cleaning the device

IMPORTANT!

- Wear protective gloves when cleaning or maintaining the machine.
- Do not use cleaning fluids or solvents or spray the machine down with water (especially water under pressure) when cleaning the machine.

NOTE: After each use, follow these steps to properly clean the unit:

- Remove soil, dirt, and foliage stuck in the tines, drive shaft, tool surface, and vents with a brush or dry cloth.
- Spray or rub biodegradable oil onto the tines.
- Clean soiled grips with a damp cloth. Always inspect the machine for damaged and worn parts after each use. Check that safety features (i.e. labels, guards, etc.) are in place. Check that nuts, bolts, and screws are tight.

MAINTENANCE

Storage

- Clean the product (see maintenance).
- Store the product and its accessories in a dark, dry, frost-free, well-ventilated place.
- Always store the product in a place that is inaccessible to children. The ideal storage temperature is between 10 and 30°C.
- We recommend using the original package for storage or covering the product with a suitable cloth or enclosure to protect it against dust.

Transportation

- Switch the product off and disconnect it from power supply before transporting it anywhere.
- Always carry the product on its gripping surfaces.
- Protect the product from any heavy impact or strong vibrations which may occur during transportation in vehicles.
- Secure the product to prevent it from slipping or falling over.

Recycling and disposal

- The product comes in a package that protects it against damage during shipping. Keep the packaging until you are sure that all parts have been delivered and the product is functioning properly. Recycle the packaging afterwards.
- Old products are potentially recyclable and do not, therefore, belong in your household rubbish. You are requested to assist us and our contribution to saving resources and protecting the environment by handing in this product at an equipped collection centre (if there is one available).



TECHNICAL DATA

Model	TLEG05A (S80RO)
Motor Voltage	230-240V ~,50Hz
Input power	800W
No load speed	390 /min
Working width	360mm
Max working depth	180mm
Net Weight	8.8kg

Part number	Accessories
TLEG05A-22	Blade
TLEG05A-18	Frame
TLEG05A-1516	Fixing knobs and bolts

TECHNICAL DATA

Measured sound pressure level 80.1 dB(A), K=3 dB(A)

Measured sound power level 89.26 dB(A), K=2.72dB(A)

Guaranteed sound power level 93 dB(A)

Vibration values

Hand arm vibration $a_{h,v}$: 3.909 m/s²

Uncertainty K: 1.5 m/s²

The sound values have been determined according to noise test code given in EN 709, using the basic standards EN ISO 11094 and EN ISO 3744

The sound intensity level for the operator may exceed 80dB(A) and ear protection measures are necessary.

The declared vibration value has been measured in accordance with a standard test method (according to EN 709) and may be used for comparing one product with another. The declared vibration value may also be used in a preliminary assessment of exposure.



WARNING! Depending on the actual use of the product the vibration values can differ from the declared total! Adopt proper measures to protect yourself against vibration exposures! Take the whole work process including times the product is running under no load or switched off into consideration!

Proper measures include among others regular maintenance and care of the product and cutting attachments, keeping hands warm, periodical breaks and proper planning of work processes!

TROUBLESHOOTING

Suspected malfunctions are often due to issues that the user can fix themselves. Therefore, check the product using this section. In most cases the problem can be solved quickly.



WARNING! Only perform the steps described within these instructions! All further inspection, maintenance and repair work must be performed by an authorised service centre or a similarly qualified specialist if you cannot solve the problem yourself!

Gloves and appropriate protective clothing must be worn when performing these instructions.

Fault Possible	Cause	Solution
Product does not start	1. Not connected to power supply 2. Power connection is loose 3. Other electrical defect to the product	1. Connect to power supply 2. Connect the power supply and tool well 3. Check by a specialist electrician
Product does not reach full power	1. Extension cord not suitable for operation with this product has too low voltage 2. Power source (e.g. generator) 3. Air vents are blocked	1. Use a proper extension cord 2. Connect to another power source 3. Clean the air vents
Unsatisfying result	1. Cutting blades worn	1. Have a specialist replace them

WARRANTY

If your device develops a fault, please don't hesitate to contact our customer service department on 0345 605 2067, we can solve 80% of problems via the phone.

1. These warranty terms cover additional warranty rights and do not affect your statutory warranty rights. All our products are covered by a 3 year manufacturer warranty.
2. Claims must be accompanied by proof of purchase. This must be in the form of a sales receipt or bank statement and must show that the product has been purchased within the warranty period as described under point 1, from the retailer that it was originally bought from. Please keep your receipt safe or staple it to the back of this manual for future reference.
3. Our warranty covers problems caused by material or manufacturing defects, and will result in the repair of these defects or replacement of the device with a like for like or similar article.
4. Our devices have not been designed for commercial, trade or industrial applications, any signs of use of the equipment in these application or equivalent activities, invalidates the warranty.
5. The following are also excluded from our warranty:
 - A. Faults due to accidents, customer misuse or unauthorised repairs
 - B. Consumable parts such as cutting line, plant protectors, handles, knobs, extension cable and other accessories that are compatible with the product.
 - C. Failure due to lack of routine maintenance.
 - D. Failure as a result of not using the equipment in accordance with the manual and safety instructions
 - E. The adjustment of cables, drive gears, or blades

Warranty claims should be submitted before the end of the warranty period, see point 1, but a paid service exists for repairs commissioned after this period. The original warranty period remains applicable to the device even if repairs are carried out or parts are replaced. In such cases, the work performed or parts fitted will not result in an extension of the warranty period, and no new warranty will become active for the work performed or parts fitted.

If you have any problems or questions concerning your garden power tool, please contact our after sales service at 0345 605 2067.