

SOVEREIGN

710W PLANER

Item No. 594443

Model No. YT9757



Technical Support & Parts

01904 727509

Mon-Fri 9am-5pm Sat-Sun 11am-4pm
www.coreservice.co.uk

ORIGINAL INSTRUCTION MANUAL

Please read these instructions fully before starting assembly.

HHGL Limited, MK9 1BA; HHGL (ROI) Limited, D02 X576

Mar 21

CONTENTS

CONTENTS	2
GENERAL SAFETY WARNINGS	3
WARNING SYMBOLS	9
IN THE BOX	10
OPERATION	11
MAINTENANCE AND STORAGE	19
TECHNICAL DATA	20
RECYCLING AND DISPOSAL	22
UK PLUG	22
GETTING HELP	23
WARRANTY	24

GENERAL SAFETY WARNINGS



WARNING! Read all safety warnings, instructions, illustrations and specifications provided with this power tool. Failure to follow all instructions listed below may result in electric shock, fire and/or serious injury.

Save all warnings and instructions for future reference. The term "power tool" in the warnings refers to your mains-operated (corded) power tool or battery-operated (cordless) power tool.

1) Work area safety

- a) **Keep work area clean and well lit.** Cluttered or dark areas invite accidents.
- b) **Do not operate power tools in explosive atmospheres, such as in the presence of flammable liquids, gases or dust.** Power tools create sparks which may ignite the dust or fumes.
- c) **Keep children and bystanders away while operating a power tool.** Distractions can cause you to lose control.

2) Electrical safety

- a) **Power tool plugs must match the outlet. Never modify the plug in any way.** Do not use any adaptor plugs with earthed (grounded) power tools. Unmodified plugs and matching outlets will reduce risk of electric shock.
- b) **Avoid body contact with earthed or grounded**

surfaces, such as pipes, radiators, ranges and refrigerators. There is an increased risk of electric shock if your body is earthed or grounded.

- c) Do not expose power tools to rain or wet conditions.** Water entering a power tool will increase the risk of electric shock.
- d) Do not abuse the cord. Never use the cord for carrying, pulling or unplugging the power tool.** Keep cord away from heat, oil, sharp edges or moving parts. Damaged or entangled cords increase the risk of electric shock.
- e) When operating a power tool outdoors, use an extension cord suitable for outdoor use.** Use of a cord suitable for outdoor use reduces the risk of electric shock.
- f) If operating a power tool in a damp location is unavoidable, use a residual current device (RCD) protected supply.** Use of an RCD reduces the risk of electric shock.

3) Personal safety

- a) Stay alert, watch what you are doing and use common sense when operating a power tool.** Do not use a power tool while you are tired or under the influence of drugs, alcohol or medication. A moment of inattention while operating power tools may result in serious personal injury.
- b) Use personal protective equipment. Always wear eye protection.** Protective equipment such

as a dust mask, non-skid safety shoes, hard hat, or hearing protection used for appropriate conditions will reduce personal injuries.

- c) **Prevent unintentional starting. Ensure the switch is in the off-position before connecting to power source and/or battery pack, picking up or carrying the tool.** Carrying power tools with your finger on the switch or energising power tools that have the switch on invites accidents.
- d) **Remove any adjusting key or wrench before turning the power tool on.** A wrench or a key left attached to a rotating part of the power tool may result in personal injury.
- e) **Do not overreach. Keep proper footing and balance at all times.** This enables better control of the power tool in unexpected situations.
- f) **Dress properly. Do not wear loose clothing or jewellery.** Keep your hair, clothing and gloves away from moving parts. Loose clothes, jewellery or long hair can be caught in moving parts.
- g) **If devices are provided for the connection of dust extraction and collection facilities, ensure these are connected and properly used.** Use of these devices can reduce dust-related hazards.
- h) **Do not let familiarity gained from frequent use of tools allow you to become complacent and ignore tool safety principles.** A careless action can cause severe injury within a fraction of a second.

4) Power tool use and care

- a) **Do not force the power tool. Use the correct power tool for your application.** The correct power tool will do the job better and safer at the rate for which it was designed.
- b) **Do not use the power tool if the switch does not turn it on and off.** Any power tool that cannot be controlled with the switch is dangerous and must be repaired.
- c) **Disconnect the plug from the power source and/or the battery pack from the power tool before making any adjustments, changing accessories, or storing power tools.** Such preventive safety measures reduce the risk of starting the power tool accidentally.
- d) **Store idle power tools out of the reach of children and do not allow persons unfamiliar with the power tool or these instructions to operate the power tool.** Power tools are dangerous in the hands of untrained users.
- e) **Maintain power tools. Check for misalignment or binding of moving parts, breakage of parts and any other condition that may affect the power tools operation.** If damaged, have the power tool repaired before use. Many accidents are caused by poorly maintained power tools.
- f) **Keep cutting tools sharp and clean.** Properly maintained cutting tools with sharp cutting edges are less likely to bind and are easier to control.
- g) **Use the power tool, accessories and tool bits,**

etc., in accordance with these instructions, taking into account the working conditions and the work to be performed. Use of the power tool for operations different from those intended could result in a hazardous situation.

h) Keep handles and gripping surfaces dry, clean and free from oil and grease. Slippery handles and gripping surfaces do not allow for safe handling and control of the tool in unexpected situations.

Service

a) Have your power tool serviced by a qualified repair person using only identical replacement parts. This will ensure that the safety of the power tool is maintained.

Planer safety warnings

- 1. Wait for the cutter to stop before setting the tool down.** An exposed rotating cutter may engage the surface leading to possible loss of control and serious injury.
- 2. Hold the power tool by insulated gripping surfaces only, because the cutter may contact its own cord.** Cutting a “live” wire may make exposed metal parts of the power tool “live” and could give the operator an electric shock.
- 3. Use clamps or another practical way to secure and support the workpiece to a stable platform.** Holding the workpiece by your hand or against the body leaves it unstable and may lead to loss of control.

WARNING SYMBOLS



Warning!



Read the instructions



Wear ear protection



Wear eye protection



Wear a dust mask



Class II tool



The product complies with the applicable European directives, and an evaluation method of conformity for these directives was done.



Recycle unwanted materials instead of disposing of them as household waste. All tools, hoses and packaging should be sorted, taken to the local recycling centre and disposed of in an environmentally safe way.



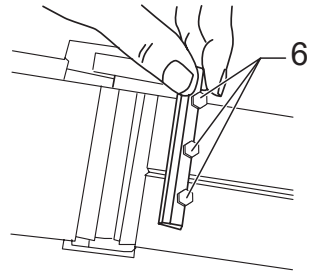
The product complies with the applicable UK directives, and an evaluation method of conformity for these directives was followed.

IN THE BOX



Description

1. On/off switch
2. Lock-off button
3. Soft grip
4. Dust extraction
5. Belt cover
6. Blade fastening screw
7. Cutting depth adjustment knob



Accessories

- 1pc Parallel guide ruler
- 1pc Locking plate
- 1pc Depth guide ruler
- 1pc Wrench
- 1pc Dust bag

OPERATION



NOTE: Before using the tool, read the instruction book carefully.

INTENDED USE

The tool is intended for planing of firmly supported wooden materials, such as beams and boards. It is also suitable for bevelling edges and rebating.

1. SAFETY ON/OFF SWITCH (SEE FIG. A)

The switch is locked off to prevent accidental starting. Depress the lock-off button then the on/off switch and release the lock-off button. To switch off, just release the on/off switch.



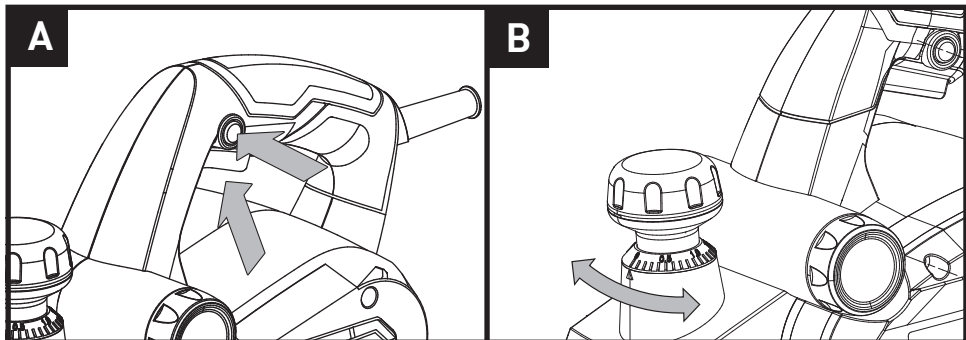
WARNING! Danger of kickback! Apply the tool to the work piece only when switched on.

2. CUTTING DEPTH ADJUSTMENT (SEE FIG. B)

The planing depth can be adjusted from 0 to 2mm. Rotate the cutting depth adjustment knob to set the required cutting depth with the scale. Clockwise rotation increases the planing depth; anticlockwise rotation reduces the planing depth.

It is recommended that test cuts be made in scrap wood after each adjustment to make sure that the desired amount of wood is being removed by your planer.

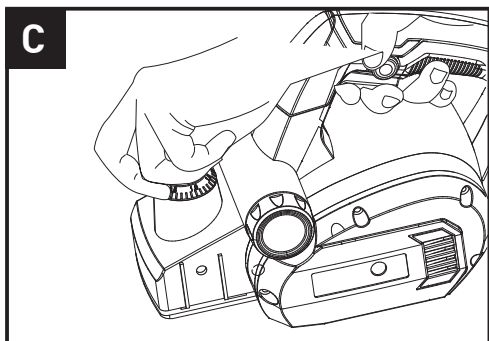
NOTE: To protect blades during storage, transporting, etc., set the blade depth adjustment knob to 0.



3. STANDARD SURFACE PLANING (SEE FIG. C)

Set the desired cutting depth. Position the front part of the base plate flat onto the work surface. Make sure that the blades are not touching the workpiece. Switch the tool on and push your planer forward and it will start cutting. Always maintain all of the base plate flat on the work surface to prevent the cutting blade jumping. Move the plane evenly over the work surface.

Be careful to avoid hitting nails during operation. It could nick, crack, or damage blades. We suggest that you always keep an extra set of blades on hand for replacement.

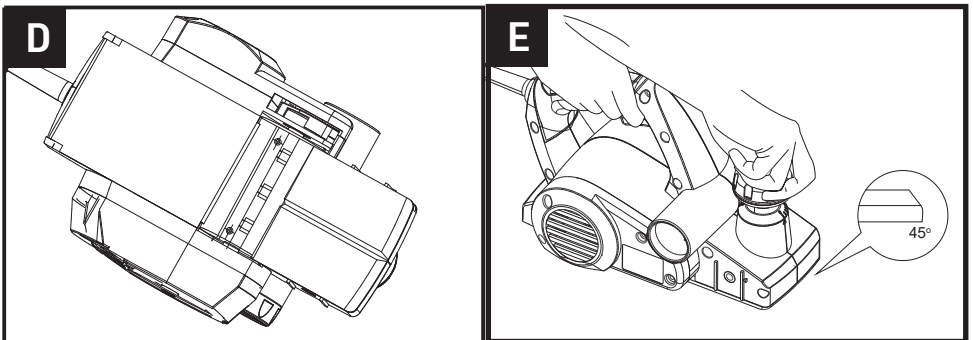


4. EDGE CHAMFERING (SEE FIG. D, E)



CAUTION: Always use both hands on the tool for any operation. It assures you maintain control and avoids the risk of serious personal injury. The workpiece must always be properly supported and clamped so that both hands will be free to control the planer.

Using the V-groove in the base plate, you can make a chamfer on the workpiece edge. Guide the planer along the edge and maintain a constant angle and force to produce a good finish. You can control the angle of the chamfer with your hands. Make a test chamfer on a scrap piece of wood. Maintain downward pressure to keep your planer flat at the beginning and the end of the work surface.

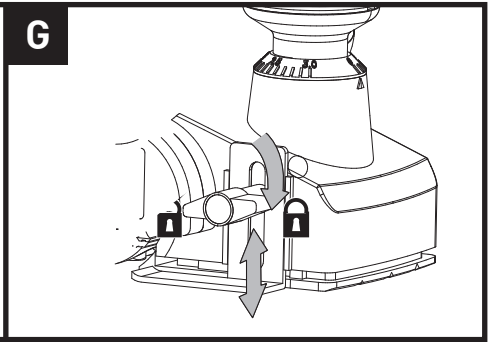
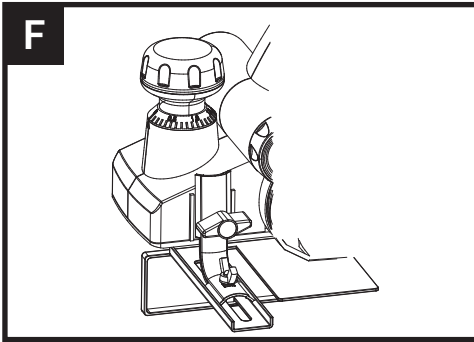


5. USING THE PARALLEL GUIDE (SEE FIG. F)

Insert the screw provided through the hole on the support of parallel guide (7). Turn the screw into the nut on the housing. Fix the parallel guide on the support of parallel guide with the screw and nut. Ensure the screws are tightened securely.

NOTE: The parallel guide should be fitted on the left of housing.

To adjust the required width of cut, loosen the nut and slide the parallel guide to the required position. Retighten the nut fully. Use the parallel guide while cutting. The guide should be held firmly against the edge of the workpiece.



6. USING THE REBATE (SEE FIG. G)

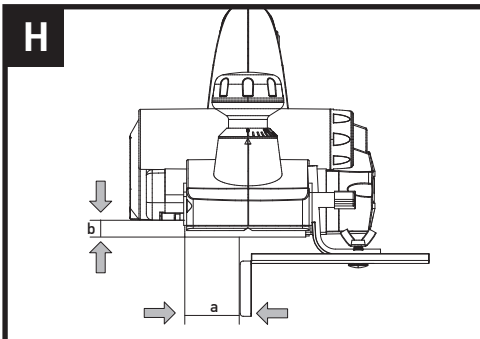
Insert the screw provided through the slot on the Rebate. Turn the screw into the nut on the housing.

The cut depth adjustment can be set from 0 to 10mm.

To adjust the depth of cut, place the planer on a flat board, then loosen the screw and slide the cut depth adjustment guide up and down for required depth. Tighten the thumb screw fully.

7. REBATING (SEE FIG. H)

The width of rebating cut (a) is adjustable by moving the parallel guide. The depth of rebating cut (b) is determined by moving the rebate, and the number of passes made along the workpiece. Make sure that the plane is guided with a lateral supporting pressure.



8. USING THE DUST BAG

Your planer is equipped with a dust bag for collection of wood chips in the work area. Make sure the zipper on the bag is fully closed. To fit the dust bag, simply insert the tube end of the bag into the dust extraction outlet.

Then switch on and start planing.

CLEANING DUST EXHAUST OUTLET & EMPTYING THE DUST BAG

After using your planer for an extended period of time or when planing wet green timber, chips may build-up in the dust exhaust outlet and require clearing. Chip build-up restricts air flow and causes the motor to overheat. Turn off the planer and remove the dust bag from the dust exhaust outlet. Clean the chip and dust exhaust outlet of your planer with a small piece of wood. Do not use your hands or fingers. Unzip the dust bag and empty all chips from it. Ensure the collar is free from debris.

We recommend emptying the dust bag every 3-6 minutes.

9. BLADE FITTING AND CHANGING (SEE FIG. I, J, K, L)



WARNING! Remove the power cord from the socket before carrying out any adjustments or changing blades. Always put on gloves when replacing blades.

NOTE: Dull and worn blades cannot be reground and must be replaced. Always replace blades in pairs.

Using the blades spanner provided, loosen the three installation screws approximately 1/2 rotation anticlockwise.

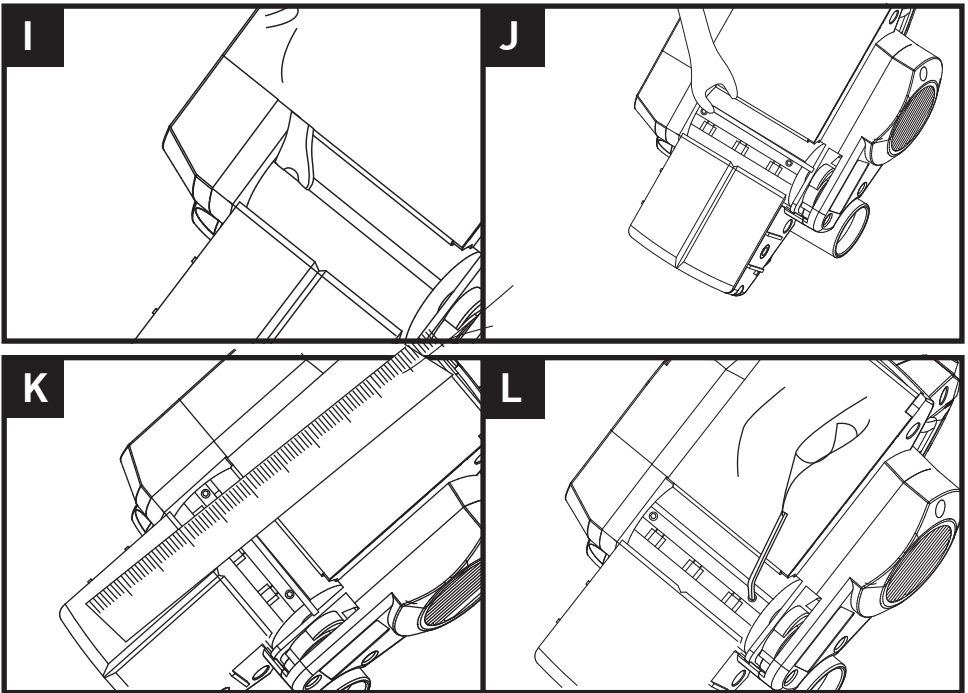
NOTE: Do not over-loosen the screws. If the screws are too loose, the alignment of the new blade will not be accurate.

Before removing the old blades, take notice of the direction of cut as well as how the tapered edge of the old blade is oriented. The tapered edge of the new blade must be in the same orientation as the original blade.

Press the safety cover down with your finger. Push the blade out with the tip of a spanner (or a screwdriver) and then remove.

NOTE: There is no need to remove the blade clamp, as this will change the factory settings for cutting blade height control.

NOTE: If a blade cannot be pushed out easily after loosening the screws, use a piece of wood to pry the blade loose from the blade clamp, with a short sharp blow. Then push with a screwdriver to remove the blade. If necessary, tap the piece of wood sharply with a small hammer to break the blade loose.



Before reinserting a new or reverse blade, always clean both the blade and the blade seat if dirty. Slide the blade into the clamp with a spanner (or a screwdriver) in the correct orientation. Check the blade is equal with the clamp. Retighten the three blade screws with the spanner.

Repeat the above procedure to change the other blade.

After the blades are replaced, check if the blades are parallel and aligned to the rear base plate with a ruler. If not, you can adjust the blades with the hexagonal wrench provided. Firstly, loosen the three screws on the blade clamp. Turn the socket head screw clockwise, the blade will be risen. Turn it anticlockwise, the blade will be lowered down.

Finally retighten the three screws fully.

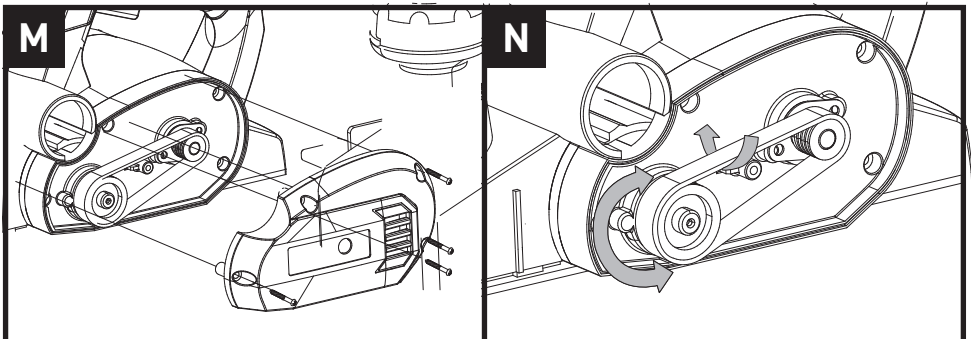
10. REPLACING A DRIVE BELT (SEE FIG. M, N)



WARNING!

1. Remove the plug from the socket before carrying out any adjustment, servicing or maintenance.
2. The cutting blades will be turning and may cause injury.

Loosen the screws and remove the belt cover. Remove the worn drive belt from the large pulley and the pinion and clean them. Lace the new belt on the top of the pinion and turn it manually, press it on the large pulley. Make sure that the drive belt runs exactly along the length of the grooves of the pinion and the pulley. Replace the belt cover. Install the cover screw and tighten fully.



11. CORRECT PLANER BLADE SETTING (SEE FIG. O)

Your planing surface will end up rough and uneven, unless the blade is set properly and securely.

The blade must be mounted so that the cutting edge is absolutely level, that is, parallel to the surface of the rear base. FIG. P shows some examples of proper and improper settings.

(A) Front base (moveable shoe)

(B) Rear base (stationary shoe)

1) Correct setting

Although this side view cannot show it, the edges of the blade run perfectly parallel to the rear base surface.

2) Nicks in surface

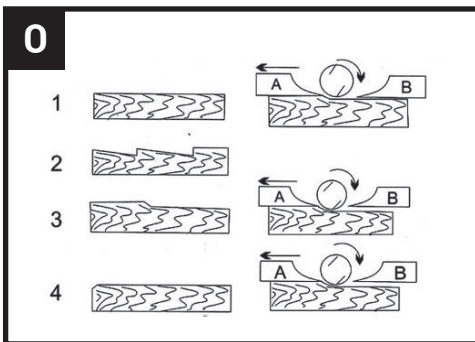
Cause: one or both blades fail to have edge parallel to rear base line.

3) Gouging at start

Cause: one or both blade edges fail to protrude enough in relation to rear base line.

4) Gouging at end

Cause: one or both blade edges protrude too far in relation to rear base line.



MAINTENANCE AND STORAGE



IMPORTANT:

Make sure that the tool has been thoroughly cleaned before storing it in a clean, dry and safe place, out of the reach of children.

1. Switch the product 'OFF' and disconnect it from the power supply before transporting it anywhere.
2. Always carry the product on its gripping surfaces.
3. Protect the product from any heavy impact or strong vibrations which may occur during transportation in vehicles.
4. Secure the product to prevent it from slipping or falling over.

TECHNICAL DATA

Model	YT9757
Voltage/power	220-240V~ 50Hz/710W
No-load speed	16500/min
Max. cutting width	82mm
Max. cutting depth	2mm
Max. rebating depth	10mm
Protection class	□ / II
Weight	2.8kg
NOISE AND VIBRATION DATA	
A weighted sound pressure (LpA)	83.1dB(A), k=3dB(A)
A weighted sound power (LwA)	94.1dB(A), k=3dB(A)
Vibrations	6.96 m/s ² K=1.5 m/s ²

The sound intensity level for the operator may exceed 80 dB(A) and ear protection measures are necessary.

The declared vibration value has been measured in accordance with a standard test method (according to EN 62841) and may be used for comparing one product with another. The declared vibration value may also be used in a preliminary assessment of exposure.



WARNING!

The vibration emission value during actual use of the power tool can differ from the declared value depending on the ways in which the tool is used and dependant on the following examples and other variations on how the tool is used:

How the tool is used and the materials being cut or drilled.

The tool being in good condition and well maintained.

Using the correct accessory for the tool and ensuring it is sharp and in good condition.

The tightness of the grip on the handles and if any anti-vibration accessories are used.

And the tool is being used as intended by its design and these instructions.

This tool may cause hand-arm vibration syndrome if its use is not adequately managed.



WARNING! To be accurate, an estimation of exposure level in the actual conditions of use should also take account of all parts of the operating cycle, such as the times when the tool is switched off and when it is running idle but not actually doing the job. This may significantly reduce the exposure level over the total working period.

Helping to minimise your vibration exposure risk.

ALWAYS use sharp chisels, drills and blades.

Maintain this tool in accordance with these instructions and keep well lubricated (where appropriate).

If the tool is to be used regularly then invest in anti-vibration accessories.

Plan your work schedule to spread any high vibration tool use across a number of days.

RECYCLING AND DISPOSAL



Waste electrical products should not be disposed with household waste. Please recycle where facilities exist. Check with your local authority or retailer for recycling advices.

UK plug

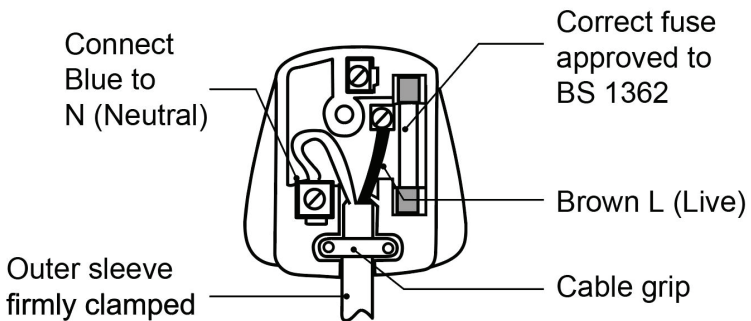
If you need to replace the fitted plug then follow the instructions below.

IMPORTANT: The wires in the mains lead are coloured in accordance with the following code: Blue–Neutral, Brown–Live



WARNING! Never connect live or neutral wires to the earth terminal of the plug. Only fit an approved 13Amp BS1363/A plug and the correct rated fuse.

As the colours of the wire in the mains lead of this product may not correspond with the coloured markings identifying the terminals in your plug, proceed as follows: The blue wire must be connected to the terminal marked N or coloured black. The brown wire must be connected to the terminal marked L or coloured red.



GETTING HELP

Our dedicated UK-based customer helpline is open 7 days a week to assist you with assembly, parts queries and technical support. We are open during office hours but you can always send an email via **support@coreservice.co.uk**. Our experts are here to get you back enjoying your garden in no time.

For useful assembly, starting and maintenance videos, and for ordering spares, please visit **www.coreservice.co.uk**.

Calling our service does not affect your statutory rights.

WARRANTY

This product is covered by a 1 year warranty.

The warranty covers any manufacturing defect in materials, workmanship and finish.

Any claim under this warranty must be made by going to your nearest Homebase store, taking your proof of purchase with you, and claims must be made within 12 months of the date of purchase.

We will offer you a free repair of the item where this is possible, or a replacement or a refund. Your statutory rights remain unaffected, in particular any rights you may have under the Consumer Rights Act 2015.

This warranty is given by HHGL Limited, MK9 1BA and HHGL (ROI) Limited, D02 X576.

Please note: This warranty does not apply to products misused or neglected and only covers domestic use. It does not apply to commercial use of the product. In addition, the warranty will be void for the following reasons: Any damage resulting from product misuse or product neglect.

