

POWERBASE

20V Cordless
Pressure Washer 660841

Instruction Manual

IMPORTANT!
Please read these
instructions fully before
starting assembly.



These instructions contain important information that will help you get the best from your product, ensuring it is assembled correctly and safely. If you need help or have damaged or missing parts, call the Customer Helpline on 01904 727 509.

Contents

General Safety Warnings	3
Intended Use	8
Safety Information	9
In the Box	11
Assembly	12
Operation	14
Application	18
Maintenance	21
Troubleshooting	23
Technical Data	25
Disposal	27
Getting Help	27
Warranty	27

General Safety Warnings

Safety warnings



WARNING! Read all safety warnings and instructions.

Failure to follow the warnings and instructions may result in electric shock, fire and/or serious injury.



WARNING! Read all safety warnings and instructions designated by the  symbol.

Save all warnings and instructions for future reference.

- This power tool can be used by persons with reduced physical, sensory or mental capabilities or lack of experience and knowledge, if they have been given supervision or instruction concerning use of the power tool in a safe way and understand the hazards involved. Children should not play with the power tool.
- The power tool is only to be used with the power supply unit provided with the appliance.

IMPORTANT! Before assembling the pressure washer, check all the parts indicated in the manual are in the box. Inspect all the parts for signs of damage. Do not assemble the pressure washer if you observe any damaged components.

Additional product safety warnings

WARNING!

1. The liquid must not be directed towards equipment containing electrical components.
2. Remove or disconnect the battery pack after use and before carrying out user maintenance on the power tool.
3. The power tool should not be left unattended while it is connected to the battery pack.
4. The power tool is not to be used if it has been dropped, if there are visible signs of damage or if it is leaking.
5. Keep the power tool out of reach of children when it is energised.

General safety warnings for battery chargers



WARNING! This power tool is not intended for use by persons (including children) with reduced physical, sensory or mental capabilities, or lack of experience and knowledge, unless they have been given supervision or instruction concerning the use of the power tool by a person responsible for their safety.



WARNING! Children should be supervised to ensure that they do not play with the power tool.

- Before charging the battery, read all the instructions carefully.
- After charging, disconnect the battery charger from the mains supply; remove the chassis connection and then the battery connection.
- Do not charge a leaking battery.
- Do not use chargers for works other than those for which they are designed and intended.
- Before charging, ensure your charger matches the local AC supply.
- For indoor use. DO NOT expose to rain. The charging device must be protected from moisture.
- Do not use the charging device in the open.
- Do not short out the contacts of the battery or charger.
- Respect the polarity (+/-) when charging.
- Do not open the unit and keep out of the reach of children.
- Do not charge the batteries of other manufacturers or ill-suited models.
- Ensure that the connection between the battery charger and battery is correctly positioned, and is not obstructed by foreign bodies.

- Keep the battery charger's slots free of foreign objects and protect it from dirt and humidity. Store in a dry and frost-free place.
- When charging batteries, ensure that the battery charger is in a well-ventilated area and away from flammable materials.
- Batteries can get hot during charging. Do not overcharge any batteries. Ensure that batteries and chargers are not left unsupervised during charging.
- Do not attempt to recharge non-rechargeable batteries, as they can overheat and break.
- Longer life and better performance can be obtained if the battery pack is charged when the air temperature is between 18°C and 24°C. Do not charge the battery pack in air temperatures below 0°C or above 45°C. This is important, as it can prevent serious damage to the battery pack.
- Only charge a battery pack of the same model provided by the manufacturer or different models recommended by them.

Safety warnings for battery packs

- Do not dismantle, open or shred cells or battery packs.
- Do not short-circuit a battery pack. Do not store battery packs haphazardly in a box or drawer, where they may short circuit each other or be short-circuited

by conductive materials. When the battery pack is not in use, keep it away from other metal objects like paper clips, coins, keys, nails, screws or other small metal objects that can make a connection from one terminal to another. Shorting the battery terminals together may cause burns or a fire.

- Do not expose the battery pack to heat or fire. Avoid storing in direct sunlight.
- Do not subject the battery pack to mechanical shock.
- In the event of battery leakage, do not allow the liquid to come into contact with the skin or eyes. If contact has been made, wash the affected area with copious amounts of water and seek medical advice.
- Seek medical advice immediately if a cell or battery pack has been swallowed.
- Keep the battery pack clean and dry.
- Wipe the battery pack terminals with a clean, dry cloth if they become dirty.
- The battery pack needs to be charged before use. Always refer to this instruction manual and use the correct charging procedure.
- Do not keep the battery pack on charge when it is not in use.
- After extended periods of storage, it may be necessary to charge and discharge the battery pack several times to obtain maximum performance.
- The battery pack gives its best performance when it is operated at

normal room temperature ($20^{\circ}\text{C} \pm 5^{\circ}\text{C}$).

- When discharging several battery packs, keep battery packs of different electrochemical systems separate from each other.
- Do not use any battery pack which is not designed for use with the equipment.
- Keep the battery pack out of the reach of children.
- Retain the original product literature for future reference.
- Remove the battery from the equipment when it is not in use.
- Dispose of safely in an environmentally- friendly manner. Not with domestic, household waste.

Intended Use

The power tool is intended for cleaning the walls of buildings, facades, terraces, footpaths, garden equipment, appliance, vehicles and tools.

The power tool is to be used only for its prescribed purpose. Any other use is deemed to be a case of misuse. The user/operator and not the manufacturer will be liable for any damages or injuries of any kind caused as a result of misuse.

Please note that our equipment has not been designed for use in commercial, trade or industrial applications. Our warranty will be void if the power tool is used in commercial, trade or industrial businesses or for equivalent purposes.

Safety Information

Please read these instructions fully before operating or maintaining your power tool.

Description of symbols

The following warning symbols appear throughout this manual and indicate the appropriate safety measures you should take when operating and maintaining the electric cordless pressure washer.



Caution/Warning.



Read instruction handbook before operating this machine.



Guaranteed sound power level value is 94dB(A).



Machine is not suitable for connection to the potable water mains.



Remove battery pack before carrying out any adjustment, servicing or maintenance.



The product complies with the applicable European directives and an evaluation method of conformity for these directives was done.



The product complies with the applicable UK directives and an evaluation method of conformity for these directives was done.



Recycle unwanted materials instead of disposing of them as household waste. All tools, cables and packaging should be sorted, taken to the local recycling centre and disposed of in an environmentally-friendly way.

Warning symbols on the charger



Read instruction handbook before operating this machine.



The charger is for indoor use only.



Class II equipment



Pole orientation



Fuse T/3.15A



WEEE symbol. Waste electrical products should not be disposed of with household waste. Please recycle where facilities exist. Check with your local authority or local store for recycling guidelines.

Warning symbols on the battery pack



Batteries contain Li-ion. Do not dispose of waste batteries in domestic waste. Contact your local authority to find out how to dispose of batteries.



Do not throw in water.



Do not throw on fire.

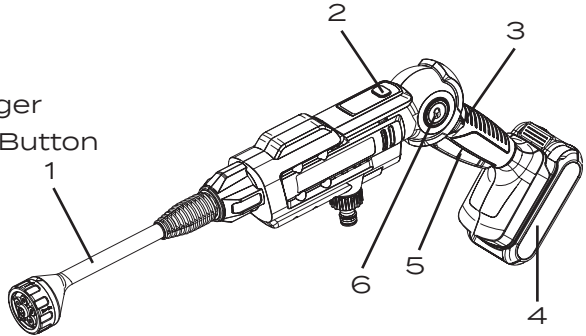


Do not subject the battery to strong sunlight over long periods and do not leave it on a heater (max. 45°C).

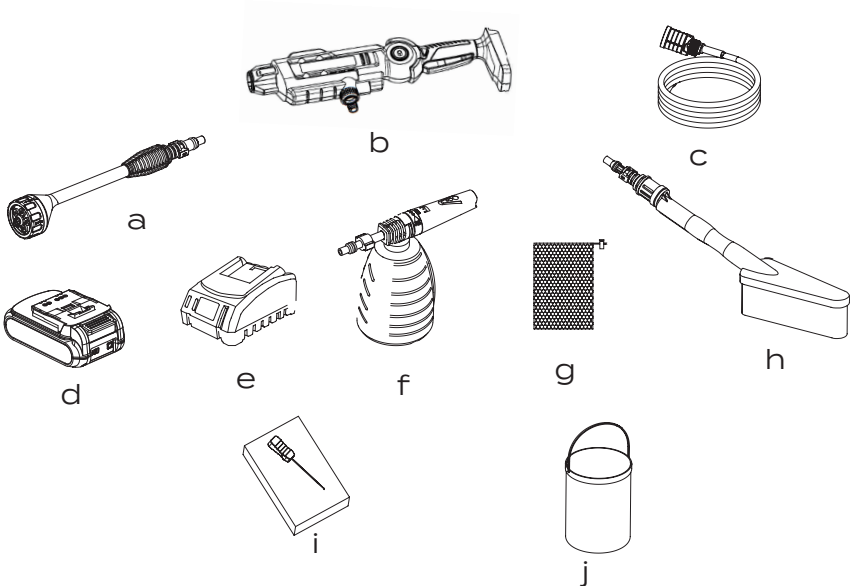
In the Box

Parts

1. 5-in-1 lance
2. H/L/Pressure Switch Button
3. Safety Lock Button
4. Battery Pack
5. ON/OFF Switch Trigger
6. Handle Rotary Lock Button



- | | |
|--------------------|-----------------------|
| a. 5-in-1 lance | f. Foam sprayer |
| b. Pressure washer | g. Net bag |
| c. Hose | h. Brush |
| d. Battery pack | i. Instruction manual |
| e. Charger | j. Foldable bucket |

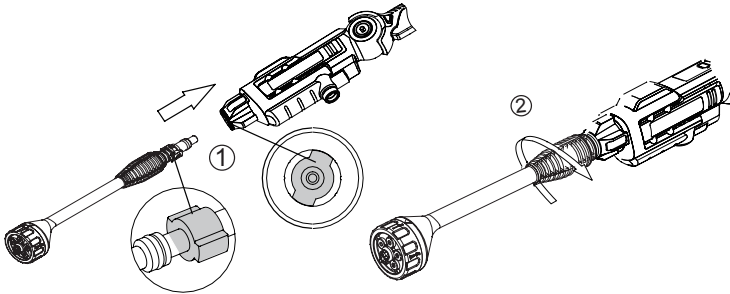


Assembly

Install the 5-in-1 lance

Align the lance to the main housing and push down firmly, then rotate the lance to secure in place.

NOTE: Make sure that the lance button is positioned on the top side.



Choose your water source

1. Using the pressure washer with your garden hose pipe: Attach the hose pipe to the pressure washer connector and make sure that it is locked into position.
2. Using the pressure washer with a portable water source: Assemble the filter to the short portable hose pipe supplied with the product. Then connect the other hose connector to the pressure washer connector and place into the water source.

Connect the hose

Attach the hose (A side) to the pressure washer connector, make sure it is locked into position when you hear the “click” sound.



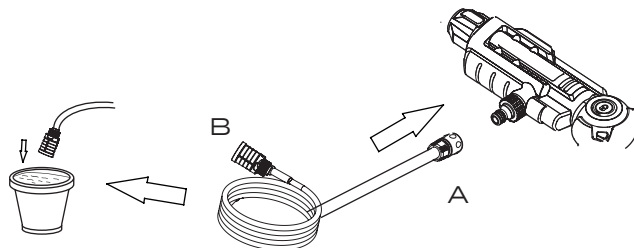
In keeping with current regulations, a pressure washer must never be operated from the drinking water mains supply without a controllable backflow preventer. A suitable backflow preventer in conformity with EN 12729 type BA must be used.

Check the connection by gently pulling upon the hose, make sure the hose is locked into position.

Water that has passed through a backflow preventer is classified as undrinkable.

NOTE: A backflow preventer is available from specialist retailers.

NOTE: Water pressure from the tap should not be higher than 0.6Mpa.



Operation

Charging the battery



WARNING!

The charger and battery pack are specifically designed to work together, so do not attempt to use any other devices. Never insert or allow metallic objects into your charger or battery pack connections; an electrical failure and hazard will occur.

The battery needs to be charged before first use and whenever it fails to produce sufficient power on jobs that were easily done before.

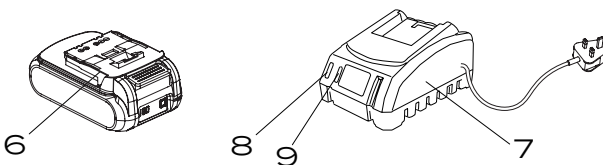


WARNING! NEVER LEAVE THE BATTERY AND CHARGER UNATTENDED WHEN CHARGING THE BATTERY.

This product comes with a lithium-ion battery pack. Lithium-ion batteries don't lose charge when not in use, and don't lose charging capacity over time. Nevertheless, it is best practice to charge the battery when empty or insufficient to do the job.

The charging procedure

1. Connect the charger (7) to a power supply. The left red light (8) will illuminate.
2. Slide the battery pack into the charger, make sure the battery pack (6) is fully seated in position. The left red light is on and the right green light (9) is flashing to indicate the battery charging.
3. When charging is complete, the left light is off and the right green light is on.
4. Once the battery is fully charged, disconnect the charger from the mains and remove the battery pack from the charger.



Important charging notes

1. Never allow the battery to completely discharge before recharging. The battery pack should be placed on the charger whenever the battery pack is noticeably running down or the tool no longer performs a task it previously performed.
2. Avoid conducting short charges. Make sure that the battery is fully charged each time by allowing the charger to complete its full charging cycle.
3. Avoid allowing loose items like screws or nails, etc. to be stored with battery packs, as these or similar items can short battery packs and cause a fire or explosion.
4. Always unplug the charger when not in use and store in a dry and secure place.
5. Avoid charging or storing your battery in temperatures below 5°C and above 45°C.
6. After use, allow the battery pack to cool down for approximately 30 minutes before attempting to recharge.



WARNING! Don't allow any liquid to get inside the charger; this could cause an electric shock. To facilitate the cooling of the battery pack after use, avoid placing the charger or battery pack in a warm environment, such as in a metal shed or an uninsulated trailer.



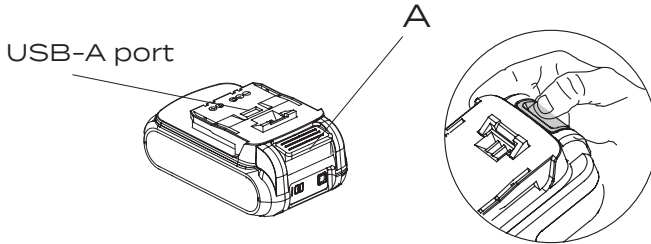
WARNING! Never attempt to open the battery pack for any reason. If the plastic housing of the battery pack breaks or cracks, return it to a service centre for recycling; do not put it into further use.

Removing or installing the battery pack



WARNING: Always release the on/off trigger before insertion or removal of the battery pack.

To remove the battery pack: Depress button (A) on the end of the battery pack, and then remove the pack from the tool.



Install the battery pack: Align the ribs on both sides of the battery pack with the slots in the housing, and slip it into place. Always insert it all the way until it locks in place with a “click” sound. If not, it may accidentally fall out of the tool, causing injury to you or someone around you.

USB-A PORT

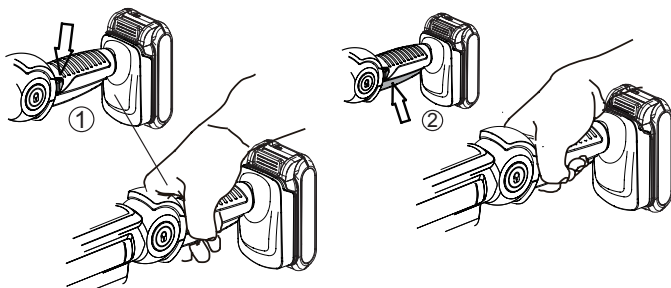
The USB-A port is on the top cover of the battery pack. Connect your electric device to the USB-A port on the battery pack using the USB-A cable suitable for your device, Push the button to start charging.

Starting and switching off

Starting:

1. Press the ON/OFF switch trigger with your thumb.
2. Depress the switch lever. Once the power tool has started then release your thumb from the “lock” button.
3. Hold the trigger down, as it will take at least 15 seconds to draw the water from the source.

NOTE: Be prepared for the recoil force of the emitted water jet! Ensure that you are standing firmly and that you are holding device securely with both hands, otherwise you could injure yourself or other people.



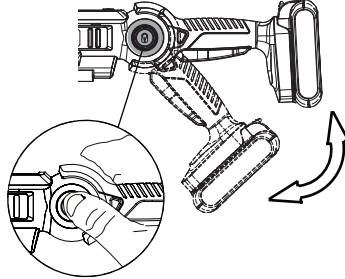
Switching off:

Release the switch trigger.

Application

Adjusting rotary handle

1. Press and hold down the rotary handle button.
2. Adjust the handle to your preferred working position and then release the button.

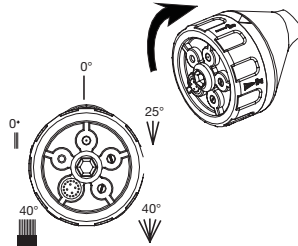


5-in-1 nozzle

Whilst holding the lance, rotate the nozzle to your selected position, making sure that the nozzle is aligned with the lance arrow.



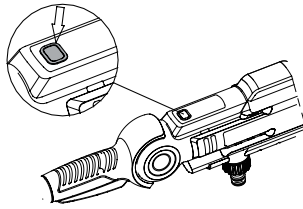
WARNING: Do not rotate the nozzle when operating the high pressure cleaner.



Adjusting working pressure

There are 2 working pressure settings.

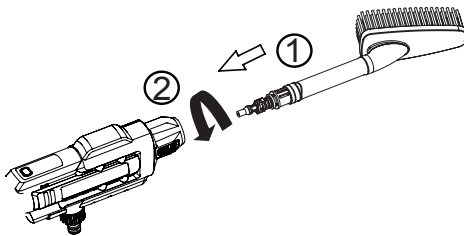
Press the button once or twice to select the preferred setting (High & low).



Using the brush

Remove the lance and nozzle.

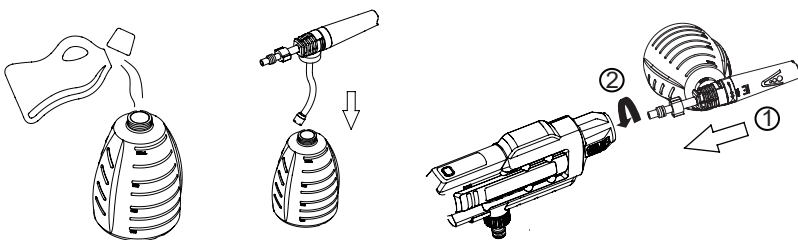
Align the brush to the main housing, push down firmly and rotate to secure in place. When using the brush it is advised to use the H/L setting to save water.



Using the foam sprayer

Fill the bottle with detergent, using the brands recommended mixture levels.

Align the detergent bottle to the main housing, push down and rotate to secure in place.



Working with the pressure washer



WARNING! Risk of fatal injury!

Use special care when cleaning tyres. Vehicle tyres/tyre valves may become damaged or burst when handled improperly. First signs of damage include discoloration on the tyre. Damaged vehicle tyres/tyre valves pose a life-threatening risk. Keep the jet at a distance of at least 30cm!



WARNING! Risk of fatal injury!

The high-pressure jet may be dangerous when handled improperly. The jet must not be directed towards living beings (persons, animals), live equipment or the power tool itself.

In case of eye contact with detergents: Rinse with an abundance of clean water. Seek medical attention if necessary.

Turn on the pressure washer. Pull the trigger to operate the unit. The liquid detergent will automatically mix with the water, and be discharged through the nozzle. Apply detergent to a DRY work surface, from bottom to top.

Allow detergent to remain on the surface for a short time before rinsing. Do not allow detergent to dry on the surface.

Rinse with clean water under high pressure. On a vertical surface, rinse from the bottom up, then rinse from the top down to avoid streaking. Hold the nozzle 6-8" (15-20cm) from the work surface, at a 45° angle.

When you have finished using the detergent injection system, fill the detergent bottle with clean water. Siphon water at low

pressure for one minute, so that the detergent is flushed through the system. Remove the detergent bottle, and rinse it until it is thoroughly cleaned.

Clogging of the spray tips causes the pump pressure to be too high and cleaning is immediately required. You can clean the spray tips by carefully inserting a needle, or a thin, sharp instrument (e.g. paperclip) into the tip to rid it of debris.

Maintenance

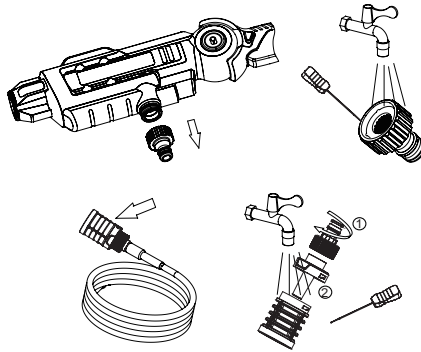


WARNING!

Before performing any repair work, always ensure that the battery pack has been removed.

Overview of cleaning

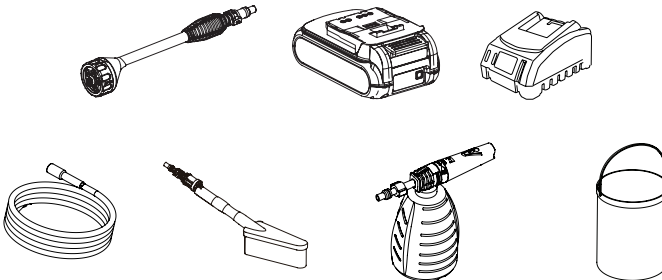
1. Clean the power tool. Wipe the unit with a slightly damp cloth. Do not clean the appliance using a high-pressure water jet.
2. Clean the inlet adaptor and filter with a needle and water. Clear debris from the inlet adaptor.



This appliance is maintenance-free

Spare parts

Please contact the after-sales centre if you need order following spare parts:



Hose filter cleaning section

The pressure washer is equipped with a water filter to protect the pump. If the filter is not kept clean, the water flow to the power tool will be restricted and the pump may be damaged.

1. Disassemble the filter from the hose. Remove transfer adapter and take out filter.
2. Rinse filter until it is free of debris and blockages.
3. Replace the filter and inlet adapter.

Storing and transport

Store the power tool in a dry and well ventilated area.

When the power tool is not going to be used for an extended period of time, be sure to remove the cleaning agent and drain all remaining water from the hose.

Transport

If shipping, use the original packaging wherever possible.

Troubleshooting

Suspected malfunctions are often due to causes that the user can fix themselves. Therefore, check the product using this section. In most cases, the problem can be solved quickly.




WARNING! Only perform the steps described within these instructions! All further inspection, maintenance and repair work must be performed by an authorised service centre or a similarly qualified specialist if you cannot solve the problem yourself!



Gloves and appropriate protective clothing must be worn when performing these instructions.



Fault/ malfunction	Possible cause	Remedy
Power tool does not turn ON	<ul style="list-style-type: none"> • Battery pack discharged? • Battery pack is not connected correctly • Safety lock off button has not been depressed m/c PCB activated • Pump frozen 	<ul style="list-style-type: none"> • Fully charge the battery pack • Install the battery pack once again • Check start procedure <ol style="list-style-type: none"> 1. Depress lock off 2. Depress switch lever • Restart the device • Check and allow the appliance to thaw
Power tool water pressure too low	<ul style="list-style-type: none"> • H/L button active (low motor speed) • Hose damaged or leaks in the connections • Filter blocked • Hose is trapped or kinked • Inadequate water supply • The appliance / water source • Height is too high 	<ul style="list-style-type: none"> • Press the H/L button once when operating the power tool (higher motor speed) • Change the hose - check the hose for leaks and repair securely tighten the screw connection • Clean filter on the appliance • Straighten out the hose • Check water supply levels • Lower the power tool - maximum working height is 1.5M- 5ft

	<ul style="list-style-type: none"> • The nozzle is not aligned with lance correctly • O-ring split/broken. Attachments are not installed correctly • Accessories broken 	<ul style="list-style-type: none"> • Re-align the nozzle correctly with the lance • Replace the accessory or change the O-ring • Remove & re-install the attachment correctly • Replace accessories
Detergent cannot spray out	<ul style="list-style-type: none"> • Speed setting on low • Deposits or restrictions in the detergent system 	<ul style="list-style-type: none"> • Select speed setting high • Flush with clean water and remove all debris
Battery not charging	<ul style="list-style-type: none"> • Battery pack too hot 	<ul style="list-style-type: none"> • Allow battery pack to cool down before re-charging

Technical Data

Model No.	LW CO2A
Voltage	20V  Max.
Max. water inlet pressure	6 Bar
Working pressure	Low: 13 Bar High: 22 Bar
Working flow rate	370 L/h
Weight	1.9kg

Charger	
Model no.	BOQ-SPO6-20ZB
Input voltage & power	220-240V AC, 50/60Hz 65W
Output voltage & current	20V  2.4A
Protection class	 /II

Battery pack	
Model no.	BOP-SPO7-20-ZR
Battery voltage	20V  Li-ion
Battery capacity	2.5Ah
USB-A	5V  2A

Technical Data

Noise emission value:

Noise measurement value determined in accordance with EN 62841.

The A-rated noise level of the power tool is typically as follows:

Sound pressure level L_{pA} : 75.7dB(A)

Uncertainty $k=3$ dB(A)

Sound power level L_{WA} : 86.7dB(A)

Uncertainty $k=3$ dB(A)

Guaranteed sound power level L_{WA} : 94dB(A)

The vibration level varies in accordance with the use of the power tool and may, in some cases, be higher than the value specified in these instructions. There is a risk of under-estimation of the vibration load, if the power tool is used regularly in this manner. Try to keep the vibration loads as low as possible. Measures to reduce the vibration load are, for example, wearing gloves and limiting the working time (e.g. times when the power tool is switched off and times where the power tool is switched on, but running without load).



NOTE:

The vibration level specified in these instructions has been measured in accordance with a standardised measuring procedure specified in EN 62841 and can be used to make equipment comparisons. The specified vibration emission value can also be used to make an initial exposure estimate.



WARNING! This equipment may cause Hand-Arm Vibration Syndrome (HAVS) if its use is not adequately monitored and managed.

Preventative measures include, among others, regular maintenance and care of the product and cutting attachments, keeping hands warm and periodical breaks, as well as proper planning of work processes.

Disposal

The pressure washer and its accessories are made of various recyclable materials. Dispose of the pressure washer in accordance with your local recycling regulations.

Getting help

Our dedicated UK-based customer helpline is open 7 days a week to assist you with assembly, parts queries and technical support. We are open during office hours but you can always send an email via **support@coreservice.co.uk**. Our experts are here to get you back enjoying your garden in no time.

For useful assembly, starting and maintenance videos, and for ordering spares, please visit **www.coreservice.co.uk**.

Using our service does not affect your statutory rights.

Warranty

This product is covered by a 3 year warranty.

The warranty covers any manufacturing defect in materials, workmanship and finish.

Any claim under this warranty must be made by going to your nearest Homebase store, taking your proof of purchase with you, and claims must be made within 3 years of the date of purchase.

We will offer you a free repair of the item where this is possible, or a replacement or a refund. Your statutory rights remain unaffected, in particular, any rights you may have under the Consumer Rights Act 2015.

This warranty is given by HHGL Limited, MK9 1BA; HHGL (ROI) Limited, DO2 X576

Please note: This warranty does not apply to products misused or neglected and only covers domestic use. The warranty period for the battery pack and charger is 1 year.