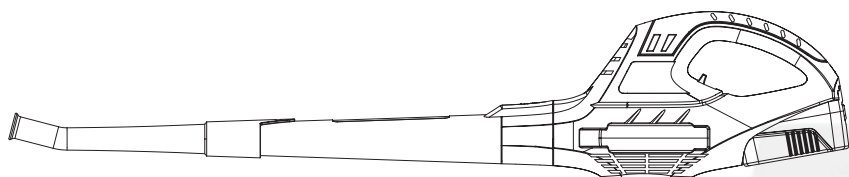


PowerG[®]

18V CORDLESS BLOWER MOW-2ET-18



Warning: Read this instruction manual carefully before using the product.

CAUTION

IMPORTANT! These instructions contain important information that will help you get the best from your electric blower, ensuring it is assembled correctly and safely. The battery pack and charger is not supplied, please purchase it separately

PowerG[®]

18V CORDLESS BLOWER

General Safety Instructions	1
Intended Use	6
Assembly and Parts List	7
Charge the Battery	8
Operation	9
Technical Data	10
Maintenance and Storage	11
Disposal	11
Guarantee	12
CE-Description	13

General Safety Instructions



WARNING: IMPORTANT SAFETY INSTRUCTIONS

When using an electrical appliance, basic precautions should always be followed, including the following:

READ ALL INSTRUCTIONS BEFORE USING THIS APPLIANCE

INTENDED PURPOSE



WARNING:

A garden blower is not a wet suction device!

The device is designed only for blowing away dry leaves from domestic walkways, borders, bushes and in other similar garden areas. Any other utilisation, which is not explicitly approved in these directions, can lead to damage to the device and represent a serious danger to the user.

The device must not be employed in areas where there is health endangering debris or as a wet suction device.

The device is designed for use by adults.

Young people over 16 years may use the device under supervision only.

The use of the device in the rain or in a humid environment is forbidden.

The manufacturer is not liable for damage which is caused through inappropriate use or incorrect operation



WARNING: To reduce the risk of fire, electric shock, or injury:

1. **WARNING:** To Reduce the Risk of Electric Shock – Do not use on wet surfaces. Do not expose to rain. Store indoors.
2. Children and pets must be supervised if the cordless blower is used in areas where they may be present or have access to. The item is not to be used for any purpose other than its intended use.
3. Use only as described in this manual. Use only manufacturer's recommended attachments.
4. Do not use the charger if it has a damaged cord or plug. If appliance is not working as it should, has been dropped, damaged, left outdoors, or dropped into water, return it to a service centre.
5. Do not pull or carry the charger by cord, use cord as a handle, close a door on cord, or pull cord around sharp edges or corners. Do not run appliances over cord. Keep cord away from heated surfaces.
6. Do not unplug charger by pulling on cord. To unplug, grasp the plug, not the cord.
7. Do not handle plug or appliance with wet hands.
8. Do not put any object into openings. Do not use with any opening blocked; keep free of dust, lint, hair, and anything that may reduce air flow.
9. Keep hair, loose clothing, fingers, and all parts of body away from openings and moving parts.
10. Turn off all controls before unplugging.
11. Use extra care when using on stairs, steps or raised areas.

12. Do not use to pick up flammable or combustible liquids, such as gasoline, or use in areas where they may be present.
13. Always turn off this appliance before connecting or disconnecting either hose or motorized nozzle.
14. Use only the charger supplied by the manufacturer to recharge.
15. Do not pick up anything that is burning or smoking, such as cigarettes, matches, or hot ashes.
16. Do not use without dust bag and/or filters in place.
17. Recharge only with the charger specified by the manufacturer. A charger that is suitable for one type of battery pack may create a risk of fire when used with another battery pack.
18. Use power tools only with specifically designated battery packs. Use of any other battery packs may create a risk of injury and fire.
19. When battery pack is not in use, keep it away from other metal objects, like paper clips, coins, keys, nails, screws or other small metal objects that can make a connection from one terminal to another. Shorting the battery terminals together may cause burns or a fire.
20. Under abusive conditions, liquid may be ejected from the battery; avoid contact. If contact accidentally occurs, flush with water. If liquid contacts eyes, additionally seek medical help. Liquid ejected from the battery may cause irritation or burns.

Safe Operation Practices for Cordless Blowers and Vacuums

Safety Instructions

1. Training

- 1) Read the operating and service instruction manual carefully. Be thoroughly familiar with the controls and the proper use of the equipment.
- 2) Never allow children to operate the tool.
- 3) Keep the area of operation clear of all persons, particularly small children, and pets.
- 4) Do not use the tool for any job except that for which it is intended.

2. Preparation

- 1) Thoroughly inspect the area where the equipment is to be used and remove all stones, sticks, wires, bones, and other foreign objects.
- 2) Operate the tool only in daylight or in good artificial light.
- 3) Never operate the equipment on wet materials. Always be sure of your footing. Keep a firm hold on the handle and walk, never run.

3. Operation

- 1) Do not put hands or feet near or under rotating parts.
- 2) If the equipment should start to vibrate abnormally, stop the motor and check immediately for the cause. Vibration is generally a warning of trouble.
- 3) Stop the motor whenever you leave the equipment, and before making any repairs or inspections.
- 4) Shut the motor off and wait until the fan comes to a complete stop before removing the bags.
- 5) Do not wash with a hose, avoid getting water in motor and electrical connections.

4. Maintenance

- 1) Keep all nuts, bolts, and screws tight to be sure the equipment is in safe working condition.

2) Check bag frequently for deterioration and wear, and replace worn bags. Check that replacement bags comply with the original manufacturer's recommendations or specifications.

Additional safety instructions for your tool

1. Do not charge appliance in damp or wet locations.
2. Do not use battery-operated appliance in rain.
3. Remove or disconnect battery before servicing, cleaning or removing material from the gardening appliance.
4. Do not dispose of the battery in a fire. The cell may explode. Check with local codes for possible special disposal instructions.
5. Do not open or mutilate the battery. Released electrolyte is corrosive and may cause damage to the eyes or skin. It may be toxic if swallowed.
6. Exercise care in handling batteries in order not to short the battery with conducting materials such as rings, bracelets, and keys. The battery or conductor may overheat and cause burns.
7. Charge only using the charger provided with the tool.
8. Do not place outlet tubes near eyes or ears when operating.
9. Do not cross gravel paths or place the tool on gravel while the tool is switched on.
10. Do not place any objects into the openings and moving parts.
11. Before removing the blow tube, always switch off the tool, remove the battery and allow the tool to run down.
12. Avoid dangerous environment. Do not use appliances in damp or wet location.
13. Do not use in rain.
14. Keep children away. All visitors should be kept at a distance from work area.
15. Dress properly. Do not wear loose clothing or jewelry. They can be caught in moving parts. Use of protective gloves and substantial footwear is recommended when working outdoors. Wear protective hair covering to contain long hair.
16. Do not use appliance for any job except that for which it is intended.
17. Do not force appliance. It will do the job better and with less risk of injury at the rate for which it was designed.
18. Do not overreach. Keep proper footing and balance at all times.
19. Stay alert. Watch what you are doing. Use common sense. Do not operate appliance when you are tired.
20. Store idle appliances indoors. When not in use, appliances should be stored indoors in dry, and high or locked-up place, out of reach of children.
21. Check damaged parts. Before further use of the appliance, a guard or other part that is damaged should be carefully checked to determine that it will operate properly and perform its intended function. Check for alignment of moving parts, binding or moving parts, breakage of parts, mounting, and any other condition that may affect its operation. A guard or other part that is damaged should be properly repaired or replaced by an authorized service center unless indicated elsewhere in this manual.

Battery

1. Never attempt to open or modify battery for any reason. Released electrolyte is corrosive and may cause damage to eyes and skin. It may be toxic if swallowed.
2. Under extreme conditions, battery leakage may occur. When you notice liquid on the battery, proceed as follows:
 - Carefully wipe the liquid off using a cloth. Avoid skin contact.
 - In case of skin or eye contact, follow the instructions below.
 - The battery fluid, a 25-30% solution of potassium hydroxide, can be harmful. In case of skin contact, immediately rinse with water. Neutralize with a mild acid such as lemon juice or vinegar. In case of eye contact, rinse abundantly with clean water for at least 10 minutes.
3. Do not expose to water.
4. Do not store in locations where the temperature may exceed 104 °F (40 °C).
5. Charge at room temperature: 64 °F-75 °F (18 °C-24 °C), never at ambient temperatures below 40 °F (4 °C) and above 104 °F (40 °C).
6. Charge only using the charger provided with the tool.
7. Before charging, make sure that the battery is dry and clean.
8. Use only the correct type of battery for the tool.
9. Exercise care in handling and storing batteries in order not to short them with conductive materials such as rings, keys, coins. There is a real risk of the battery or the conductor overheating, causing fire or burns.
10. Do not dispose of battery in fire. It may explode. Follow instructions and regulations given by local authorities concerning environmental protection. Dispose of old batteries at an appropriate waste disposal facility.

Chargers

1. Use your charger only to charge the battery in the tool which it was supplied. Other batteries could burst, causing personal injury and damage.
2. Never attempt to charge non-rechargeable batteries.
3. Do not expose the charger to water.
4. Do not open the charger.
5. Do not probe the charger.

Save the instructions

1. Refer to them frequently and use them to instruct others who may use this tool. If someone borrows this tool, make sure they have these instructions.
2. Use only identical replacement parts.

Symbols



Warning



Read the manual



Do not dispose of batteries. Return exhausted batteries to your local collection or recycling point.



Li-Ion

Contains Li-ion battery. Battery must be recycled or disposed of properly.



Always charge the battery between temperatures 32 °F-104 °F (0 °C-40 °C).



Do not burn



Wear eye protection



Wear ear protection



Do not use in the rain

Intended Use

1. This leaf blower/vacuum has a designated rated input of 18V DC. The product is intended for:
— blowing dry leaves for piling up or blowing material out of hard to reach places
2. The product must not be used in areas where there is health damaging dust or as a wet blowing device.
3. The product may only be used with the blowing tube fully installed. Avoid wet materials such as leaves and dirt, twigs, branches, pine needles, grass, earth, sand, mulch, cuttings etc. Do not use on wet lawns, grassy areas or fields.
4. This product is intended for use by adults. Young people over the age of 16 may only use the device when supervised. The use of the product in the rain or in a humid environment is not permitted.
5. For safety reasons it is essential to read the entire instruction manual before first operation and to observe all the instructions therein.
6. This product is intended for private use only, not for any commercial applications. It may not be used for any purposes other than those described.

Assembly and Parts List

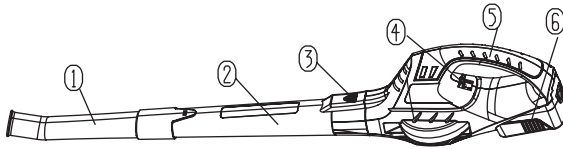


Fig 1

Parts list:

- 1. Extension Tube
- 2. Blower Tube
- 3. Tube Release button
- 4. Speed Control Switch
- 5. Handle
- 6. Battery Pack (not supplied)

Note: the battery pack(ET-D1802A) and charger(JLH302101300B) is not supplied, please purchase it separately.

Assembly

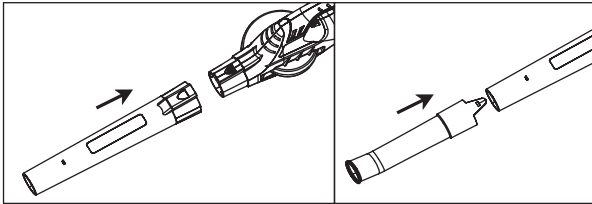


Fig.2

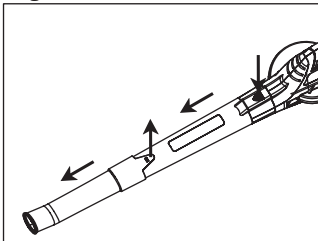


Fig 3

Assembling the blower tube (Fig. 2 & Fig. 3)

Before assembling the Blower Tubes (1), (2) be sure the Speed Control Switch (4) is in "O" Off position.

Fit the Blower Tube to the motor housing as shown in Fig 2. Check the Blower Tube is firmly secured.



WARNING! Do not attempt to operate or disable the On/Off Switch by any means other than the normal assembly or removal of the tube.

Note: Before disassembling the Blower Tube, be sure the Speed Control Switch (4) is in "O" Off position. Press the Release Button(3) , so that you can separate the tube.(Fig. 3) Repeat the action (1), so that you can separate the Down Blower Tube.(Fig. 3) Do not try to separate the tubes by force or by using tools.

Charge the Battery

Before attempting to charge the battery pack, thoroughly read all Safety Instructions.

The battery needs to be charged before first use and whenever it fails to produce sufficient power on jobs that were easily done before.

The battery may become warm while charging; this is normal and does not indicate a problem.

NOTE! After several charge and discharge cycles, the battery will attain full capacity.



DO NOT CHARGE THE BATTERY AT AMBIENT TEMPERATURES BELOW 4°C OR ABOVE 40°C (BELOW 40°F OR ABOVE 104°F).

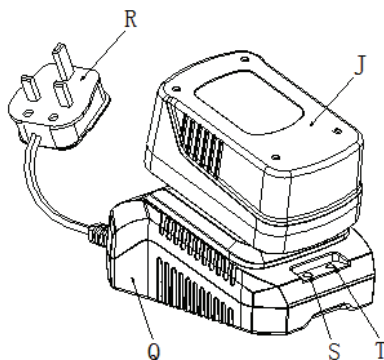


Fig 4

1. Insert the plug (R, Fig.4) into a 240V AC power outlet. The green LED power light (S, Fig.4) comes on, indicating the charger is ready for use.
2. Insert the battery pack into the receptacle in the charger (Q, Fig.4), making sure it is well sealed in the charger. The red LED light (T, Fig.4) will come on, and the green LED light (S, Fig.4) will shut off at the same time, indicating the battery is correctly seated and on charge.
3. If the red LED light (T, Fig.4) doesn't come on, and the green LED light (S, Fig.4) is still on, the battery pack is too hot and can not be charged. Remove the battery and allow it to cool for 30 minutes and then re-insert it.
4. The battery pack will normally be fully charged after 70 minutes, when the red LED light will shut off and the green light comes on again. The initial charge may take longer.
5. Remove the battery pack from the charger.

Important charging notes

Longest life and best performance can be obtained if the battery pack is charged when the air temperature is between 18-24°C. Do not charge the battery pack in a very low or very high air temperature. This is important and will prevent serious damage to the battery pack.

1. When using your tool continuously, the batteries in your battery pack will become hot. You should let a hot battery pack cool down for approximately 30 minutes before attempting to recharge.
2. The charger and battery pack may become warm to touch while charging. This is a normal condition, and does not indicate a problem.
3. Use the charger in normal room temperatures whenever possible. To prevent overheating, do not cover the charger and do not charge battery packs in direct sunlight or near heat sources.
4. If the battery pack does not charge properly
 - a). check current at receptacle by plugging in a lamp or other appliance.
 - b). move charger and battery pack to a location where the surrounding air temperature is approximately 18-24°C.
 - c). If charging problems persist, take or send the tool, battery pack and charger to your local service center.
5. The battery pack should be recharged when it fails to produce sufficient power on jobs which were easily done previously. DO NOT CONTINUE to use under these conditions. Follow the charging procedure. You may also charge a partially used pack whenever you desire with no adverse affect on the battery pack.
6. Under certain conditions, with the charger plugged in to the power supply, the exposed charging contacts inside the charger can be shorted by foreign material. Foreign materials of a conductive nature such as, but no limited to, steel wool, aluminum foil, or any buildup of metallic particles should be kept away from charger cavities. Always unplug the charger from the power supply when there is no battery pack in the cavity. Unplug charger before attempting to clean.
7. Do not immerse charger in water or any other liquid.
8. WARNING! don't allow any liquid to get inside charger. Electric shock may result. To facilitate the cooling of the battery pack after use, avoid placing the charger or battery pack in a warm environment such as in a metal shed, or an uninsulated trailer.
9. CAUTION!: never attempt to open the battery pack for any reason. If the plastic housing of the battery pack breaks or cracks, return to a service center for recycling, do not put it into further use

Operation



WARNING! The charger and battery pack are specially designed to work together so do not attempt to use any other devices. Never insert or allow metallic objects into your charger or battery pack connections because of an electrical failure and hazard will occur.

1. Before using your cordless blower

You must charge once before use.

The battery charger supplied is matched to the Li-ion battery installed in the machine.

Do not use another battery charger.

2. Charging your battery pack

The Li-ion battery is protected against deep discharging. When the battery is empty, the machine is switched off by means of a protective circuit: The tool holder no longer rotates.

In a warm environment or after heavy use, the battery pack may become too hot to permit charging. Allow time for the battery to cool down before recharging.

3. To remove or install battery pack (fig. 5)

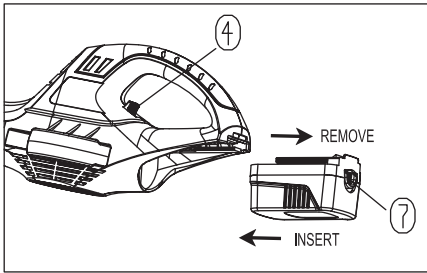


Fig.5

- Always move the Speed Control Switch (4) to the “O” Off position before insertion or removal of the battery pack.
- To remove the battery pack, withdraw it from the tool while pulling the Battery Release Button (7) down.
- To insert the battery pack, groove along the handle and insert in the full position, until the Battery Release Button (7) bounce back to normal position again.

4. starting/stopping (fig. 6)

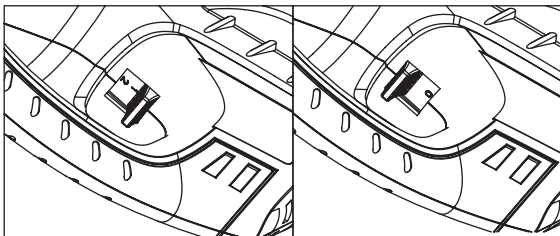


Fig.6

Starting

Move the Speed Control Switch (4) to the “1” or “2” On position. (“1” is low and “2” is Strong.)

Stopping

Move the Speed Control Switch (4) to the “O” Off position.

5. using the blower

The blower is intended for residential use only.

Use the blower outdoors to move debris from hard surfaces. This blower is not designed to clear leaves from large grassy areas, or move wet, heavy debris.

User tips

- Hold the blow tube approx 7" above the ground when operating the tool. Use a sweeping motion from side to side. Advance slowly keeping the accumulated debris/leaves in front of you.

Caution!

- After blowing the debris/leaves into a pile, it is easy to dispose of the pile.
- Do not blow hard objects such as nails, bolts, or rocks.
- Do not operate the blower near bystanders or pets.
- Use extra care when cleaning debris from stairs or other tight areas.
- Wear safety goggles or other suitable eye protection, long pants, and shoes.

Technical data

Voltage:	DC 18 V
No load speed:	13000/min("2")/9000/min("1")
Weight:	1.8kg
Max Blow speed:	120mph("2")/50mph("1")
Charging time:	70 minutes
Battery:	1.5Ah Li-ion

Maintenance and Storage



WARNING! Store the blower indoors, in a cool dry location, out of reach of children and animals.

If storing Blower for more than 30 days, follow steps below.

1. Remove battery from Blower.
2. Charge battery completely. (Note: It could take up to 4 hours to completely charge the battery.)
3. When battery is completely charged, remove from charger

IMPORTANT: To prolong battery life, avoid leaving battery on charger for extended periods of time (over 30 days without use).

4. Store Blower and battery

- in a high or locked place, out of children's reach.
- in a dry place.
- in a carrying case.

Disposal

The packaging material is reusable. Rid yourself of the packaging in an environmentally friendly way and put it in the collection of recyclable materials.



This product and its batteries must not be disposed of with domestic waste. The product must be disposed of at an authorised local collection place for recycling of electrical and electronic devices in pursuant to the European Directive 2002/96/EC

Guarantee

Thank you for purchasing a PowerG garden tool. In the unlikely event that your product develops a fault, please contact our team of technical experts at Core Service, the after-sales department, on 0844 856 0793 who will aim to resolve any faults over the phone for you.

This product is guaranteed for 1 year from the original date of purchase; the guarantee applies to material and manufacturing defects. These guarantee terms cover additional guarantee rights and do not affect your statutory rights. If the defect is covered by our guarantee your product will either be refunded in full, or replaced.

Guarantee claims should be submitted within the 12 month guarantee period after which no claims will be accepted.

Please note that our products are for DIY use only and are not designed for use in commercial, trade or industrial applications. Consequently, the guarantee is invalidated if the equipment is used in commercial, trade or industrial applications or for other equivalent activities. This product must be used in accordance with the instructions contained in this manual. The guarantee will be rendered invalid if the product has been damaged by unauthorised repairs or resold.

The following are also excluded from the guarantee:

- A) Faults due to accidents, customer misuse, or unauthorized repairs
- B) Consumable parts and accessories such as harness and debris collection bag
- C) Failure due to lack of routine maintenance
- D) Failure as a result of not using the equipment in accordance with the manual and safety instructions
- E) The adjustment of cables, drive belts or recoil starters

Please keep your proof of purchase in a safe place; this warranty is not valid without the original dated proof of purchase.

Core Service

Technical helpline: 0844 856 0793

Email: support@coreservice.co.uk

Website: www.coreservice.co.uk

CE-Description

SUMEC

Declaration of Conformity

We

SUMEC Hardware & Tools Co., Ltd.
198 ChangJiang RD ., Nanjing, CHINA

And our branch office

Sumec UK Co. Ltd

Unit A&B, Escrick Business Park,
Escrick, York

YO19 6FD

Declare that the product

18V Li-ion Garden Blower

Model No: MOW-2ET-18

Complies with the essential health and safety requirements of the following directives:

2004/108/EC ---EMC Directive
2000/14/EC ---Outdoor Noise Directive
2006/42/EC ---Machinery Directive
2011/65/EU ---ROHS

Standards and technical specification referred to :

EN 60335-1:2002+A1+A11+A12+A2+A13+A14+A15

EprEN 60335-2-100:2010

EN62233:2008

06/42/EC-Annex I/0.5.06

EN55014-1:2006+A1

EN55014-2:1997+A1+A2

Authorized Signatory

Date: _2013-12-13

Signature: _____

Cai Ji Bo

Name: Cai Ji Bo

General Manager

SUMEC Hardware & Tools Co., Ltd.



