

WORKZONE®



MULTIFUNCTION TOOL 300 WATT

Original operating instructions



CUSTOMER SUPPORT



GB 0845 872 2740

IRL 019022605



www.coreservice.co.uk

Model: CGN300A, 10 / 2013,90810

Contents

03 Safety instructions

- 03 Explanation of the symbols
- 03 General safety instructions
- 04 1) Safety at the workplace
- 04 2) Electrical safety
- 04 3) Personal safety
- 05 4) Using and handling the power tool
- 05 5) Service
- 06 6) Special safety instructions

07 Parts list and assembly

- 07 Check the parts supplied
- 07 Parts list
- 08 Assembly
- 08 1) Changing mounted accessories
- 08 2) Fitting a sanding sheet to the sanding pad
- 08 3) Extraction of dust/waste
- 09 4) Connecting the tool to the dust extractor
- 10 5) Additional handle

10 First steps

- 10 Intended use
- 10 Selecting the correct accessory

11 Technical data

12 Instructions

- 12 Switching on and off
- 12 Selecting the oscillation speed

12 Further useful information

- 12 Maintenance and cleaning
- 13 Disposal
- 13 Checking the tool
- 13 Service/customer support
- 14 EU Declaration of conformity
- 15 Exploded drawing
- 16 Spare parts list

16 Warranty card



Safety instructions

1

Explanation of the symbols



Please read all safety and operating instructions before using this tool. Please pay particular attention to all the paragraphs in these operating instructions including warning symbols and instructions.

	Take note of the warning and safety instructions.
n_0	Idling speed
$V \sim$	Voltage
	Protect your electrical equipment against moisture.
	Check that the device, mains cable and plug are in perfect condition.
	Protection category II
	Dispose of the packaging and the tool in an environmentally responsible manner.

General safety instructions



CAUTION! Read all safety notes and instructions carefully.

Failure to observe the safety notes and instructions can cause electric shock, fire and/or serious injuries.

Keep all safety notes and instructions safe for future consultation.

The term "power tool" used in the safety instructions relates to mains-powered electrical tools (with power cord) and battery-powered electrical tools (cordless).



1) Safety at the workplace

- **Keep your working area clean and well lit.** Untidiness or unlit working areas can lead to accidents.
- **Do not use the tool in a potentially explosive environment where there are flammable liquids, gases or dusts.** Power tools generate sparks that can ignite the dust or vapours.
- **Keep children and other persons at a distance while you are using the power tool.** You could lose control of the tool if you are distracted.

2) Electrical safety

- **The plug on the power tool must fit in the socket. The plug must not be modified in any way.** Do not use an adapter plug together with earthed power tools. Unmodified plugs and suitable sockets reduce the risk of an electric shock.
- **Avoid physical contact with earthed surfaces such as pipes, heating systems, ovens and fridges.** There is an increased risk of an electric shock if your body is earthed.
- **Keep power tools out of the rain and away from moisture.** Water penetrating into a power tool increases the risk of an electric shock.
- **Do not misuse the cable by using it to carry the power tool or hang it up, or to pull the plug out of the socket. Keep the cable away from heat, oil, sharp edges or moving parts of the tool.** Damaged or wound cables increase the risk of an electric shock.
- **Only use extension leads suitable for use outdoors when you are working with a power tool outside.** Using an extension lead suitable for use outdoors reduces the risk of an electric shock.
- **Use a residual current device (RCD) if it is not possible to avoid using the tool in a damp environment.** The use of a residual current device reduces the risk of an electric shock.
- **Do not use the tool near combustible objects.**

3) Personal safety

- **Be alert, pay attention to what you are doing and be sensible when you are working with a power tool. Do not use a power tool when you are tired or under the influence of drugs, alcohol or medication.** A moment of inattentiveness when you are using the power tool can lead to serious injuries.
- **Wear personal protective equipment and always wear safety goggles.** Wearing personal protective equipment such as a dust mask, non-slip safety shoes, a safety helmet or ear defenders depending on the nature of the power tool and the use to which it is to be put reduces the risk of injuries.
- **Do not allow it to run unintentionally. Make sure that the power tool is switched off (on/off switch to 'Off') before you connect it to the power supply, pick it up or carry it.** Accidents can be caused if you carry the power tool with your finger on the switch or connect the tool to the power supply when it is switched on.

- Remove adjusting tools or spanners before you switch the power tool on. A tool or spanner in a rotating tool can cause injuries.
- Avoid unusual postures. Ensure that you have a stable stance, and keep your balance at all times. This will allow you better to control the power tool in unexpected situations.
- Wear appropriate clothing. Do not wear baggy clothes or jewellery. Keep your hair, clothes and gloves clear of moving parts. Loose clothing, jewellery or long hair can be trapped by moving parts.
- If dust extraction and trapping equipment can be fitted, make sure that it is correctly connected and being used properly. The use of dust extraction can reduce the hazards posed by dust.

4) Using and handling the power tool

- Do not overload the tool. Use the power tool intended for the job in hand. You will be able to work better and more safely in the capacity range specified if you have a suitable power tool.
- Do not use a power tool with a faulty switch. A power tool that can no longer be switched on or off is hazardous and must be repaired.
- Unplug the tool from the mains before you make adjustments to the tool, change accessories or put the tool away. This precaution prevents the power tool being started unintentionally.
- Keep power tools that are not in use out of the reach of children. Never allow persons not familiar with the tool or who have not read these instructions to use the tool. Power tools are dangerous in the hands of inexperienced users.
- Maintain your power tools with care. Check that moving parts of the tool are working perfectly and not sticking, check whether parts are broken or so damaged that the operation of the power tool is impaired. Have damaged parts repaired before using the tool. The root cause of many accidents is poor maintenance of the power tool.
- Keep cutting tools sharp and clean. Carefully maintained cutting tools with sharp cutting edges stick less and are easier to control.
- Use the power tool, accessories, attachments etc. in accordance with these instructions. Take account of the working conditions and the work to be done. The use of power tools for applications other than those intended can lead to hazardous situations.

5) Service

- Only have your power tool repaired by qualified specialists using original spare parts. This will guarantee that the safety of the power tool is maintained.
- Use only original spare parts for servicing and follow the instructions in the "Servicing" section of these instructions. The use of non-authorized parts or the failure to observe the maintenance instructions can lead to electric shocks or injuries.

6) Special safety instructions

Special precautions should be taken during surface preparation of pre-1960s painted surfaces over wood and metal as they may contain harmful lead.

Noxious dust. Dust particles created when sanding paint or some types of wood and metals, for instance, can be toxic or noxious.

Always used dust extraction when sanding. Connect the extraction hose to the adapter on the tool. Make sure that the extraction system is suitable for the material to be machined.

Make sure that your working area is well ventilated when you are working on plastic, paints, varnishes etc.

Do not treat the workpieces or surfaces to be worked with liquids containing solvents.

Only use the tool for dry sanding/sawing/cutting.

Water penetrating into the tool increases the risk of an electric shock.

Make sure that no persons can be endangered by sparks. Remove all combustible materials from your working area. Sparks are created when you sand metals.

Caution, risk of fire. Avoid overheating the material to be machined and the sander.

Always empty the dust bag before taking a break in work. In unfavourable circumstances, such as flying sparks when sanding metals, the waste in the dust bag, microfilter or paper sack (or in the extractor bag or filter) can ignite spontaneously. This may happen if the waste is mixed with varnish, polyurethane or other chemicals and is hot after a long period of working in particular.

Hold the workpiece securely. It is safer to secure a workpiece in a clamping device or vice than to hold it by hand.

Never use the power tool with a damaged mains cable. Do not grasp a cable that has been damaged during working, nor pull on it to pull the mains plug from the socket. Damaged cables increase the risk of an electric shock.

Replacement of the mains connection cable. Should it be necessary to replace the mains connecting cable, this should be done by the manufacturer or his agent, to avoid safety hazards.

Wear safety gloves when swapping the accessories on the tool as they become hot if used for some time.

Keep your hands away from the attachment. Do not hold the underside of the workpiece. You may be injured if you touch the attachment.

Only hold the tool by its insulated grips when you are carrying out work in which the attachment might contact hidden current conductors or its own mains cable. Contact with a conducting lead can also energize metal parts of the tool and lead to an electric shock.

Never put the power tool down until the attachment has come to a halt. The rotating attachment can contact the surface which would make you lose control over the power tool.

Hold the power tool firmly and position your arms and body such that you can absorb kickback forces. Always use the additional handle so that you have the greatest possible control over the power tool.

Use only sandpaper approved for your power tool.

Unsuitable or projecting sandpaper can cause injuries.

Do not modify the power tool in any way. The use of accessories other than those supplied can lead to damage to the tool and injury of the user.

Protect your furniture and floors with suitable covers when you are using the power tool in your home.

Always observe the general rules for the prevention of fires when you are using certain power tools in your house or in the workshop. We recommend that you have a fire extinguisher to hand at all times while you are working.

Use only original spare parts for servicing and follow the instructions in the "Servicing" section of these instructions. The use of non-authorized parts or the failure to observe the maintenance instructions can lead to electric shocks or injuries.

Parts list and assembly

2

Check the parts supplied

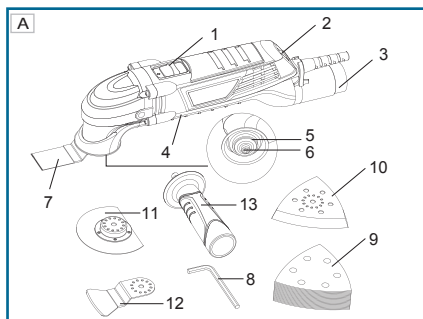
Unpack the tool carefully and check that the following parts are present:

- Multifunction tool
- Plunge saw blade
- Segment saw blade
- 20 sanding sheets (grit: 60/240 four sheets of each + grit: 80/120/180/320 three sheets of each)
- Sanding pad
- Scraper
- Clamping screw and washer (pre-assembled)
- Allen key
- Two extraction connectors
- Extraction hose
- Additional handle
- Operating instructions

Please contact your dealer if any parts are missing or damaged.

Parts list (figure A)

The numbering of the tool parts refers to the illustration on the graphics page.



1. On/off switch
2. Adjuster wheel for oscillation speed
3. Extraction connector
4. Extraction tube
5. Accessory holder
6. Clamping screw and washer
7. Plunge saw blade
8. Allen key
9. Sanding sheet
10. Sanding pad
11. Segment saw blade
12. Scraper
13. Additional handle

Assembly



RISK OF INJURY. Always unplug the tool after use and before changing accessories. Wear protective gloves when changing the tools or accessories. Contact with the tool/accessories can cause injuries.

1) Changing mounted accessories

Remove any accessory already fitted. Do this by undoing Clamping screw and washer 6 using Allen key 8 and remove the accessory.

Place the accessory (e.g. plunge saw blade 7) on the accessory holder 5.

NOTE: You can place the accessory in any possible position on the accessory holder 5.

Secure the accessories with the Clamping screw and washer 6 in the desired position.

Tighten Clamping screw 6 with the Allen key 8.

Check that the accessory is firmly seated. Incorrectly or insecurely mounted accessories can come loose in use and injure you.

2) Fitting a sanding sheet to the sanding pad

The sanding pad 10 has a Velcro backing plate so that sanding sheets can be quickly and easily mounted.

Position the sanding sheet 9 so that it is firmly held on one side of the sanding pad 10.

Then fit the sanding sheet to the backing plate.

3) Extraction of dust/waste

Do not use the tool on materials containing asbestos, as this is carcinogenic.

Risk of fire. There is a risk of fire when you are working with power tools that can be fitted with a dust bag or connected to a vacuum cleaner. Under certain circumstances, the wood dust in the dust bag (or in the vacuum cleaner bag) can ignite, e.g. because of flying sparks that can be created by sanding metals or metal objects in the wood. This can be the case in particular if the wood dust is mixed with paint residues or other chemicals and the particles sanded off have been heated up by long periods of sanding. For this reason, you must empty the dust bag on the tool and the vacuum cleaner bag before breaks in working or before finishing work and always avoid overheating the particles sanded off and the tool.

Wear a dust mask.

Always use the dust extraction device.
Make sure that your working area is well ventilated.
Observe the regulations applicable in your country relating the materials you are working on.

4) Connecting the tool to the dust extractor

Always connect the tool to a dust extractor if you are sanding.

Assembly

First fit the front section of the extraction tube 4 to the tool motor.
Then push the rear part of the extraction tube 4 towards the front section to connect it with the hook and lock it in the opposite position.

Connection

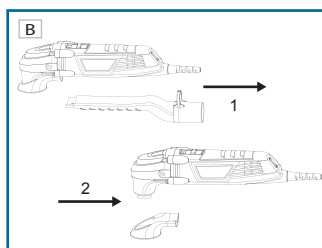
Push the extractor connection 3 for an external extraction system onto the extraction hose 4. If it is necessary to use a hose adapter, push this into the connector for the external extractor system.

Push the hose from a dust extractor approved for this purpose (e.g. a workshop vacuum cleaner) onto the connector for an external extraction system or the hose adapter.

Dismantling (figure B)

Pull the dust extractor hose off the adapter for the external extraction system 12.

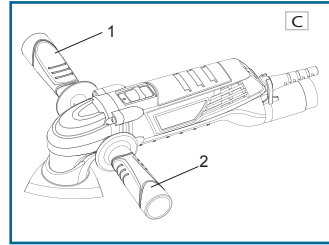
Pull the external extraction system adapter off (and hose adapter 13, if this has been used).



5) Additional handle (figure C)

Always fit the additional handle when you are working with the tool.

Screw the additional handle in (13) to the tool head depending how you are intending to work. The tool has two holes so that you can change the position of the additional handle.



First steps

3

Intended use

The power tool is intended solely for sawing and cutting wood, plastic, plaster, non-ferrous metals and fasteners (e.g. nails, staples). It can also be used for working on non-hardened wall tiles and for dry sanding and scraping small areas. It is particularly suitable for work in corners and for flush cutting. Any other use or modification of the tool is considered to be improper use and can lead to considerable hazards. We are not liable for any loss or damage arising from improper use. The tool is not suitable for professional tasks.

Selecting the correct accessory

- Segment saw blade 11
Material:
wood, plastic, non-ferrous metals
Use:
 - cutting and plunge sawing
 - sawing close to a corner, and hard-to-reach spots, for example: parquet flooring, also with plunge sawing
- Plunge saw blade 7
Material:
wood, plastic, plasterboard and other soft materials
Use:
 - cutting and plunge sawing
 - sawing close to a corner, and hard-to-reach spots, for example: sawing of holes in stud walls.

- Sanding pad 10
Material:
wood, paint
Use:
- sanding in corners and hard-to-reach spots
- Scraper 12
Material:
carpet, covering
Use:
- scraping hard surfaces, such as: removing carpet and tile adhesive

Technical data

4

Model number	CGN300A
Nominal voltage	230 V~, 50 Hz
Power	300 W
Idling stroke speed n_0	15000 - 21000 min ⁻¹
Weight	1.6 kg
Mitre cutting sound pressure level (L _{pA})	79 dB(A)
Uncertainty K =	3 dB(A)
Sound power level (L _{wA})	90 dB(A)
Uncertainty K =	3 dB
Vibration emissions value a_h =	14 m/s ²
Uncertainty K =	3 m/s ²

Wear ear defenders.

Total vibration values (vector sum of three directions) determined in accordance with EN 60745 for sawing wood: Vibration emission value $a_h = 14 \text{ m/s}^2$ Uncertainty $K = 3 \text{ m/s}^2$
The vibration values stated were measured in accordance with a standardized test method as specified in EN 60745 and can be used to compare one power tool with another.
The vibration values may differ from the specified value during actual use, depending on how the tool is being used.

Protect yourself against the effects of vibrations by assessing the working time or wearing special gloves.

The values stated are valid for nominal voltages <U> of 230 V. These values can vary with lower voltages and models for certain countries.

Please take note of the part number on your tool's rating plate. The commercial name on the tools can vary.

Instructions

5

Make sure that the mains voltage is correct. The voltage of the power source must correspond to the voltage specified on the tool's rating plate. Power tools are marked as 230 V.

Switching on and off

Switch on: press the on/off switch forwards until the "I" symbol is visible. Switch off: press the on/off switch backwards until the "0" symbol is visible.

Selecting the oscillation speed

NOTE: The oscillation speed required depends on the material and the working conditions and may be established in a practical test.

Select the oscillation speed you require using the oscillating speed adjustment wheel 2.

Further useful information

6

Maintenance and cleaning

- Unplug the tool from the mains before carrying out any maintenance work on it.
- Keep the tool and its ventilation slots clean to ensure safe and correct working.
- Check regularly whether dust or foreign bodies have penetrated the openings near the motor and around the on/off switch. Brush away any accumulated dust using a soft brush. Wear safety goggles while cleaning the tool.
- Clean the tool casing with a soft, damp cloth. You may use a mild detergent but do not use alcohol, petrol or other cleaning agent.
- Never use caustic agents for cleaning plastic components.
- Lubricate all moving parts regularly.



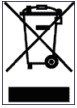
CAUTION! The power tool must never come into contact with water.

Disposal



Do not dispose of power tools with your domestic waste.

The packaging comprises entirely recyclable materials. Dispose of these materials in the appropriate recycling containers.



Caution: Electric and battery-powered devices that are no longer useful must not be added to the domestic waste. According to Directive 2002/96/EU on waste electrical and electronic equipment (WEEE) they must be collected and sent for environmentally-friendly and professional recycling.

Checking the tool

Check all fasteners on a regular basis. These can come loose over time because of vibration.

Service/customer support

Sertronics GmbH MEROTEC Service Center
Ostring 60
D-66740 Saarlouis, Germany

Tel: +49 (0) 40 87408209
Fax: +49 (0) 6831 4880 820

E-mail: merotec@sertronics.de
website: www.sertronics.de

EU Declaration of conformity

We
MEROTEC GmbH
Graf-Recke-Strasse 82, 40239 Düsseldorf, Germany
hereby declare that our product:

300W **MULTIFUNCTION TOOL**
model number CGN300A

Complies with all material requirements relating to health and safety at work in accordance with the following directives:

2004/108/EC
2006/42/EC
RoHS 2011/65/EC

Harmonized standards applied

EN 55014-1:2006 + A1:2009
EN 55014-2: 1997+A1: 2001+A2: 2008
EN 61000-3-2:2006 + A1:2009 + A2:2009
EN 61000-3-3: 2008
EN 60745-1:2009 + A11:2010
EN 60745-2-4:2009+A11 : 2011
EN 60745-2-11:201

Legally valid signature
2013-06-01
Signature:

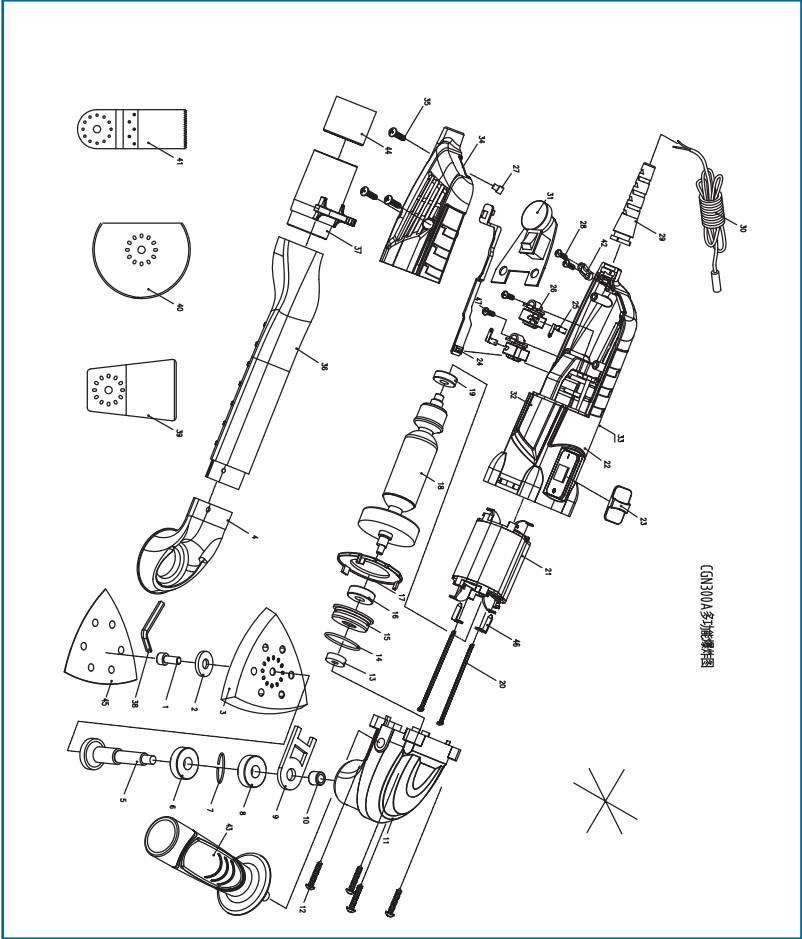


Name: Thorsten von der Heyde
General Manager
MEROTEC GmbH

Documentation manager:
Michael Willms
MEROTEC GmbH
Graf-Recke-Strasse 82
40239 Düsseldorf, Germany



Exploded drawing



ENGLISH

Spare parts list

Ref.	Beschreibung	Ref.	Beschreibung
1	Clamping screw	25	Brush
2	Clamping ring	26	Brush holder
3	Sanding pad	27	Rubber grommet
4	Dust extractor	28	Bolt
5	Drive shaft	29	Cable protection
6	Bearing cover	30	Mains cable
7	C-shaped spring	31	Carrier plate
8	Bearing	32	Rating plate 1
9	Transmission piece	33	Rating plate 2
10	Needle bearings	34	Housing cover
11	Aluminium transmission	35	Bolt
12	Bolt	36	Extraction tube
13	Ball bearings	37	Vacuum adapter set 3
14	Sealing ring	38	Allen key
15	Bearing mount	39	Scraper
16	Bearing	40	Segment saw blade
17	Motor cover	41	Plunge saw blade
18	Rotor	42	Cable clamp
19	Bearing	43	Additional handle
20	Bolt	44	Vacuum adapter set 4
21	Stator	45	Sanding paper
22	Casing	46	Stator fixing washer
23	Switch button	47	Screw
24	Transmission piece		

The warranty period is three years and begins on the day of purchase. Please retain your receipt as your proof of purchase.

Faulty multitool can be sent to the service address given below. You will then receive a new or repaired saw free of charge.

Please call our service centre on the telephone number below before you send the tool in for repair. You will be able to obtain from them a returns sticker to allow you to send your tool in free of charge.

Even if the warranty period has expired, you are able to send your faulty tool in to the address below.

This warranty does not effect your statutory rights.

Your information:

Name _____

Address _____



_____ E mail _____

Date of purchase* _____

* We recommend that you keep the receipt with this warranty card.

Place of purchase _____

Description of fault:

Send the completed warranty card to:

Units A,B
Escrick Business Park
Escrick
York
YO19 6FD

E-mail:
support@coreservice.co.uk

CUSTOMER SUPPORT



GB 0845 872 2740

IRL 019022605

Model: CGN300A, 10 / 2013,90810

3

YEARS WARRANTY

IMPORTED BY:
MEROTEC GmbH
Graf-Recke-Strasse 82
40239 Düsseldorf, Germany