



User Manual

Great care has gone into the manufacture of this product and it should therefore provide you with years of good service when used properly. In the event of product failure within its intended use over the course of the first 3 years after date of purchase, we will remedy the problem as quickly as possible once it has been brought to our attention. In the unlikely event of such an occurrence, or if you require any information about the product, please contact us via our helpline support services, details of which are to be found both in this manual and on the product itself.



PRODUCED IN CHINA FOR:
ALDI STORES LTD. PO BOX 26, ATHERSTONE
WARWICKSHIRE, CV9 2SH

ALDI STORES (IRELAND) LTD.
PO BOX 726, NAAS, CO. KILDARE
Visit us at www.aldi.com

AFTER SALES SUPPORT

805016



GB +44(0) 1904727501 IE +353(0) 19022605



support@coreservice.co.uk

MODEL:
GSR2800

03/2021

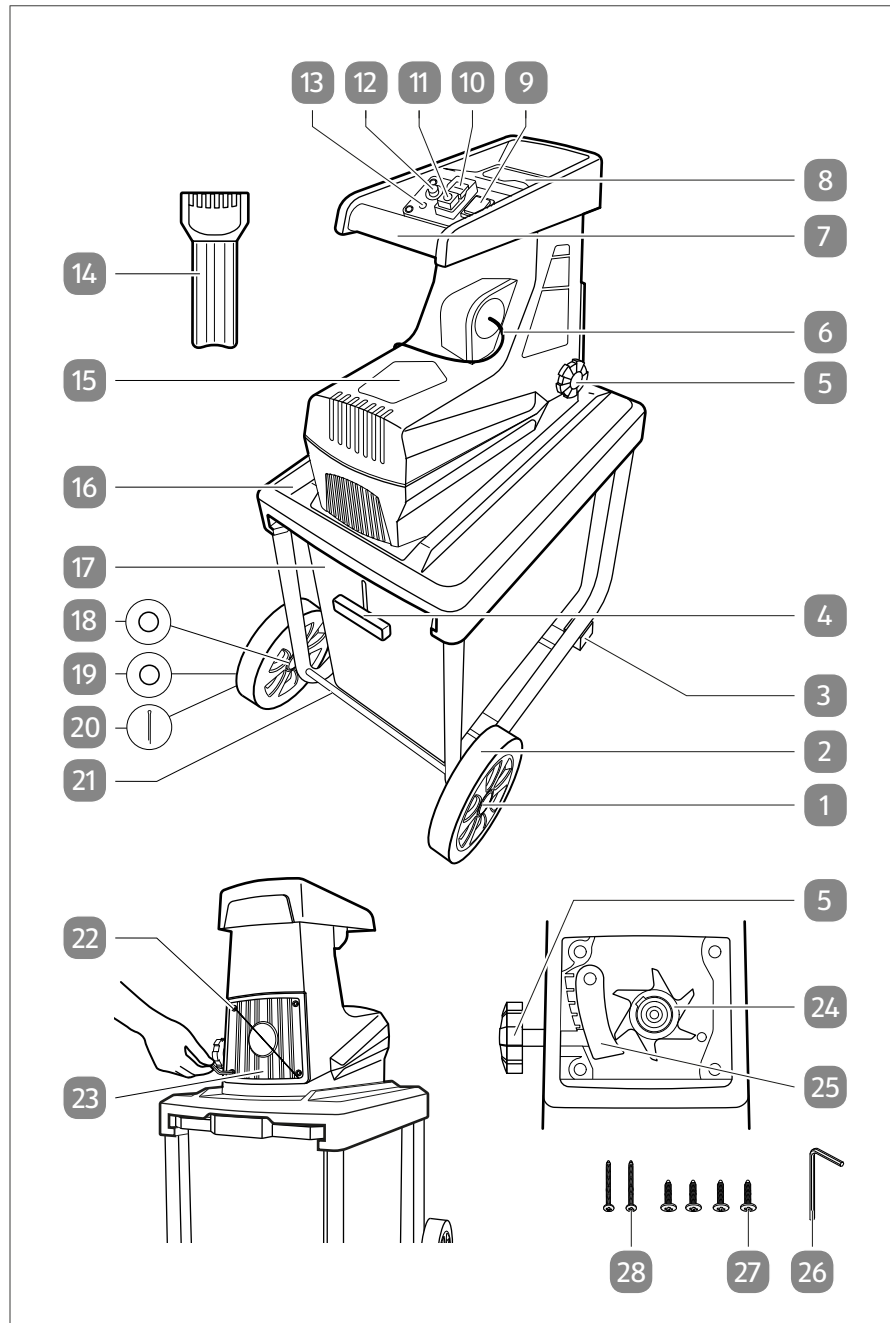
3
YEAR
WARRANTY

FERREX® ELECTRIC GARDEN SHREDDER



Original User Manual

Overview



Package contents/components

- | | |
|-------------------------------|---|
| 1 Wheel cover (2x) | 16 Base frame |
| 2 Wheel (2x) | 17 Collection container |
| 3 Support foot (2x) | 18 Inner washer (2x) |
| 4 Safety switch | 19 Outer washer (2x) |
| 5 Adjustment dial | 20 Splint (2x) |
| 6 Supply cord with plug | 21 Wheel axle |
| 7 Hand grip | 22 Screw for cutter cover (4x) |
| 8 Hopper | 23 Cutter cover |
| 9 Function selection switch | 24 Cutting drum |
| 10 ON switch | 25 Pressure plate |
| 11 OFF switch | 26 Allen wrench |
| 12 Overload protection switch | 27 Screw 6x25 (4x) |
| 13 Standby LED | 28 Screw 5x45 (2x) |
| 14 Pusher | Instruction manual and warranty card (without illustration) |
| 15 Shredder assembly | |

Required tools/consumables not included in the package


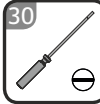



- | | | | |
|------------------------------------|---|------------------------------|---|
| 29 Phillips screwdriver PH2 |  | 30 Flat head screwdriver SL3 |  |
| 31 Broom |  | 32 Brush |  |
| 33 Commercially available tool oil |  | | |



Table of content

Overview	2
Package contents/components	3
General information	6
Reading and storing the operating manual.....	6
Proper use.....	6
Foreseeable misuse.....	6
Residual risks.....	6
Explanation of symbols	7
Safety	9
Safety notes.....	9
Safety instructions for persons.....	11
Safety instructions for the shredder.....	12
Safety instructions regarding extension cords.....	12
Safety instructions.....	13
Before first use	13
Check the device and scope of delivery.....	13
Assembly.....	14
Operation	16
Operating panel.....	16
Overload protection with restart lockout.....	17
Resetting overload protection.....	17
Adjusting the pressure plate.....	18
Preparing for operation.....	18
Switching the device ON and OFF.....	19
Using the pusher.....	19
Emptying the collection container.....	20
Working with the shredder	21
Shredding.....	22
Removing stuck material.....	23
Cleaning, maintenance and storage	24
Transport	27
Spare parts	28
Troubleshooting	29
Technical data	30
Declaration of conformity	32
Disposal	33

General information

Reading and storing the operating manual



This instruction manual is part of this electric garden shredder (in the following also called "device"). It contains important information about start-up and operation.

Before using the device, read the operating manual carefully, in particular the safety instructions. Failure to follow this operating manual may lead to severe injuries or product damage.

This user manual is based on the standards and regulations that are valid within the European Union. Outside the EU, please also note the country-specific directives and laws.

Keep this operating manual for future reference. If you pass this device on to a third party, you must also supply this operating manual.

Proper use

The device is designed exclusively for shredding tree and hedge trimmings.

This device is intended for private use only and is not suitable for commercial use. Use the device only as described in this operating manual. Any other use is improper and may lead to product damage or even personal injury. This device is not a toy.

The manufacturer or retailer assume no liability for damage caused by improper or incorrect use.

Foreseeable misuse

Do not use the device for soft materials such as kitchen waste. They will plug up the shredder mechanism.

Do not use the device for shredding stone, glass, metal, bones, plastics or textiles.

Residual risks

Even if you use this device as intended, residual risks cannot be completely excluded.

The following dangers can occur in connection with the design and construction of this device:

- Danger of injury from being pulled in when reaching into the feed chute.
- Scratch, crush or cut injuries when working without protective gloves.
- Eye damage from flying particles or rebounding cuttings, if safety goggles are not worn.
- There is a risk of damage if you do not wear hearing protection.

Reduce the residual risk by using the device carefully and correctly and by following all instructions.

Explanation of symbols

The following symbols and signal words are used in this user manual, on the device or on the packaging.



This symbol provides you with useful additional information on handling and use.



Declaration of conformity (see chapter “Declaration of conformity”): Products marked with this symbol meet all the applicable Community regulations of the European Economic Area.

IPX4

The device is protected from all sides against water splashes.



Read the instruction manual



Wear ear protectors.



Wear goggles.



Wear protective gloves.



Do not use the device in the rain.



Caution - Sharp knives - Unplug power plug prior to maintenance work or if the power cable is damaged

Explanation of symbols



Danger – rotating knives.

Keep hands and feet out of openings while the device is running.



Keep uninvolved persons and animals away from the danger area.



This symbol warns of a risk of electrical shock.



The guaranteed sound power level L_{wa} is 92dB.



Never stand on the device. Never use the device or device components as a climbing aid.



Wait until all device components have stopped before touching the device.



Function selection switch:

- Top position:
Direction of material flow is reversed to remove blockages.
- Middle position:
No operation
- Bottom position:
Normal operation - shredding

Safety

IMPORTANT

READ CAREFULLY BEFORE USING THE DEVICE. KEEP FOR FUTURE USE.

The following signal words are used in this operating manual.

▲ WARNING!

This signal symbol/word denotes a hazard with an average risk level that could lead to death or severe injury if it is not avoided.

▲ CAUTION!

This signal symbol/word denotes a hazard with a low risk level that could lead to mild or moderate injury if it is not avoided.

NOTE!

This signal word provides a warning about potential material damage.

Safety notes

▲ WARNING!

Risk of electric shock!

Faulty electric installation or excess mains voltage can cause an electric shock.

- Only plug the device into a properly installed outlet. The mains voltage must correspond to the specification on the type plate.
- Do not connect the device if there is visible damage to the device, the power cable or a power plug.
- If the supply cord is damaged, it must be replaced by the manufacturer, its service agent or similarly qualified persons in order to avoid a hazard.

Safety

- Do not open the device. Leave repairs to a qualified service technician. Contact the service address indicated on the warranty card. Liability and warranty claims are excluded if you carry out repairs yourself, improperly connect the device to the power supply or operate it incorrectly.
- Only parts that match the original device data may be used for repairs. This device contains electrical and mechanical parts that are essential for protection against sources of danger.
- Operate the device only at an outlet with a protective contact and at least a 16A fuse.
- The device must be supplied via a residual current protection device (RCD) with a rated residual current of no more than 30 mA.
- Electrical supply cables must be positioned in such a way that they cannot get into the device.
- Do not immerse the device or the power cable or the power plug in water or other liquids.
- Never touch the power plug with wet hands.
- Keep the device and the power cable away from open flames and hot surfaces.
- Make sure that the power cable does not present a trip hazard.
- Do not bend the power cable or position it over sharp edges.
- Never operate the device in damp rooms or at a relative humidity of over 75%.
- Never reach for the device if it has fallen into water. Immediately disconnect the device from the power supply.
- In case of a malfunction, immediately disconnect the device from the power cable or power supply.
- Do not operate the device with an external timer or a separate remote control system.

- Do not use the device in a thunderstorm. Switch the device off and unplug the power cable from the socket.
- While the device is not in use or is being cleaned, or if a malfunction occurs, always turn the device off and disconnect it from the power supply.
- Do not use the device if the ON/OFF switch is not working properly.

Safety instructions for persons

▲ WARNING!

Danger to children and persons with reduced physical, sensory or mental abilities (e.g. partially disabled, elderly persons with reduced physical and mental abilities) or lack of experience and knowledge (e.g. older children).

Improper handling of the device can lead to severe injuries or damage to the device.

- Do not leave the device unattended when in use.
- Do not allow others to handle the device until you have read and understood this operating manual or until you have been instructed about its intended use and the associated risks.
- Never leave persons with physical, sensory or mental impairments (such as children or drunk people) or persons lacking experience and expertise (such as children) unattended in proximity of the device.
- Never allow children or persons with reduced physical, sensory or mental abilities or lack of experience and knowledge to use the device.
- Do not let children carry out cleaning or user maintenance.
- Local regulations may impose age limits on users.
- Children must not play with the device or the connection cable.

- Do not operate the device when impaired (e.g.: under the influence of drugs, alcohol, medication or if tired).

Safety instructions for the shredder

⚠ WARNING!

Risk of injury!

Improper use of the device can lead to injuries.

- The knife is sharp. Wear protective gloves and be especially careful when working in the vicinity of the knife.
- Only work in good lighting conditions or provide appropriate artificial lighting.

⚠ WARNING!

Risk of injury!

The device has various safety devices to prevent injuries to the largest extent possible. There is a risk of injury if the device is used improperly.

- Completely assemble the device according to this manual before starting it up.
- Before starting up the device, make sure that all screws, nuts, bolts and other fastening materials are securely fastened.
- Make sure all covers and deflectors are in place and in good working order.
- Never disable safety devices.
- Replace damaged or illegible stickers.

Safety instructions regarding extension cords

- Only use power cables that are approved for outdoor use and are splash-proof.
- Check the power cable for damage before connecting it to the power source.
- Do not use a damaged power cable.

- For extension cords up to 25m use a heavy-duty extension cord (14/3 AWG or higher).
- For extension cords over 25m use a heavy-duty extension cord (12/3 AWG or higher).
- Do not use a power cable with a total length of more than 50m.
- Completely unwind cables from cable drums before use.

Safety instructions

Carefully read the instruction manual before using the device. Keep this instruction manual for future use.

Carefully read the instructions. Familiarize yourself with the controls and correct operation of the device.

Keep in mind that the operator is responsible for accidents and dangers to other people or their property.

Wear hearing protection and safety goggles. Always wear them when operating the device.

Do not operate the device on paved or graveled surfaces where ejected material may cause injury.

Never operate the device with defective safety devices or shielding, or without safety devices, e.g. debris flaps.

Never try to disable the safety switch for the collection container.

For your safety, replace worn or damaged parts. Only use genuine parts and accessories.

Always replace assemblies as a whole.

Keep the power supply free of dirt and other accumulations to prevent damage to the power supply and avoid a possible fire.

Before first use

Check the device and scope of delivery

Before first use

NOTE!

Risk of damage!

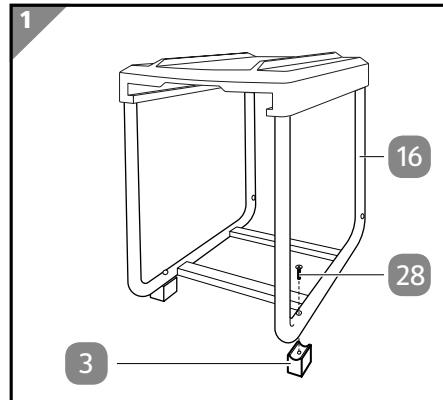
If opening the packaging with a sharp knife or other pointed objects, careless handling can damage the device.

- Therefore, be very careful when opening.
1. With both hands, lift the device out of the packaging.
 2. Check that the delivery is complete (see chapter “Scope of delivery/device components”).
 3. Inspect the device and individual parts for damage. Do not operate a damaged device; instead, contact the manufacturer via the service center listed on the warranty card.

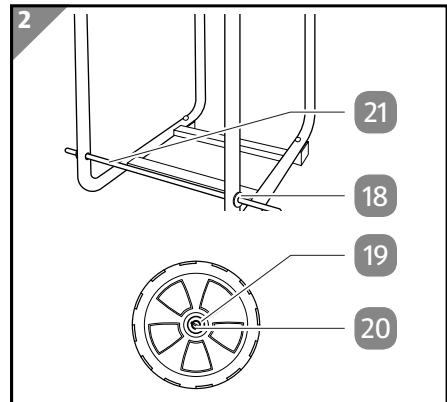
Assembly

Assembling the base frame

1. Install the two support feet **3** with the 5x45mm screws **28** on the base frame **16**.



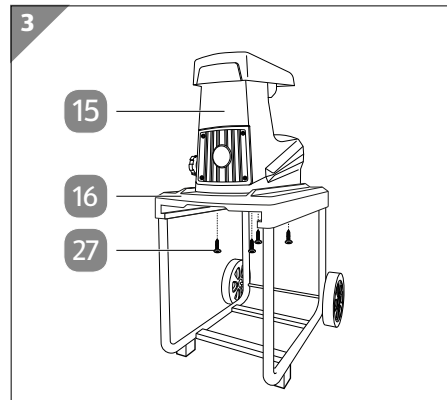
2. Push the wheel axle (21) through the axle holes in the base frame.
3. Slide an inner washer (18), a wheel (2) and an outer washer (19) onto each side of the axle.
4. Insert a splint (20) into the hole on both ends of the axle.
5. Bend the ends of the splints around the axle.
6. Place the wheel covers (1) onto the wheels. There should be a clearly audible click.



The base frame is assembled.

Installing the shredder assembly on the base frame

1. Position the shredder assembly (15) on the base frame (16).
When doing so, make sure that the cutting drum (24) is positioned over the opening in the plastic plate of the base frame.
2. Screw the shredder assembly to the base frame with the four 6x25mm screws (27).



The device is assembled.

Inserting the collection container

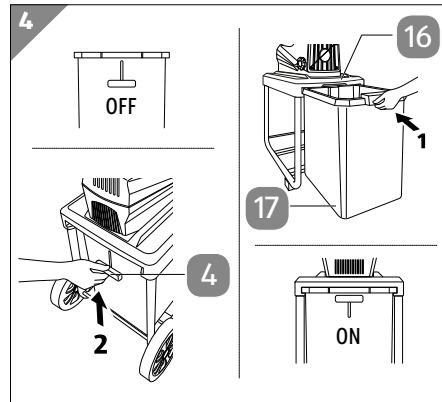


The device cannot be started without the collection container and the safety switch being in the **ON** position!

Before first use

1. Unlock the safety switch **4** (**OFF** position, down).
2. Insert the collection container **17** into the base frame **16**.
The collection container can only be inserted from the side with the support feet.
3. Secure the collection container by pulling the safety switch up (**ON** position, up).

The collection container is inserted and secured.



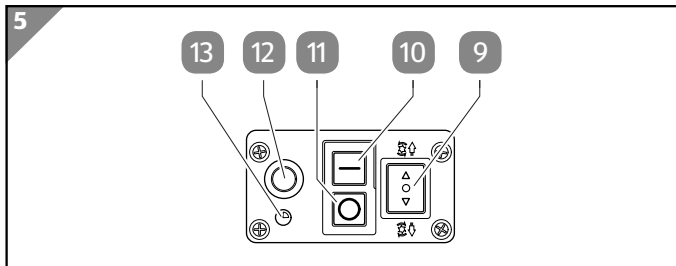
Operation

The device has a powerful electric motor with overload protection. A restart lockout increases your safety. The cutting drum of the device works extremely quietly and automatically pulls in the material.

The shredded material can be conveniently collected and transported with the transparent collection container.

The robust base frame ensures stability and mobility.

Operating panel



Overload protection switch

If the motor is overloaded, the overload protection triggers. Press the overload protection switch **12** to reset the device to the operating state.

Standby LED

The standby LED **13** is lit red if the following conditions are fulfilled:

- The collection container **17** is inserted and secured (see section "Inserting collection container").
- The power supply is connected.

- The overload protection has not been triggered (see section "Overload protection with restart lockout").

ON switch

The ON switch **10** switches the device on if the following conditions are fulfilled:

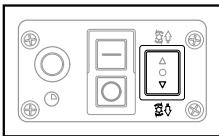
- The standby LED **13** is lit red.
- The function selection switch **9** is set to **forward** or **reverse**.

OFF switch

The OFF switch **11** switches the device off from **forward** mode.

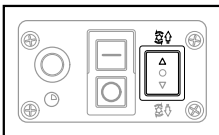
Function selection switch

Use the function selection switch **9** to set the operating mode.



Forward

Forward is the normal operating mode. The material is pulled in and shredded. When switched to this operating mode, the ON switch **10** is fixed (continuous operation).



Reverse

Reverse is used to clear jammed material out of the device. When switched to this operating mode, the ON switch **10** is not fixed (no continuous operation).

Overload protection with restart lockout

The device is equipped with overload protection. If the motor is overloaded (e.g., branches that are too thick or wood that is too hard is/are inserted into the hopper), the overload protection is activated.

- When the overload protection is activated, the standby LED **13** goes off.
- The device is automatically switched off and cannot be switched on again.

When the overload protection has been activated, you must reset the overload protection (see section "Resetting the overload protection").

Resetting overload protection

After a switch-off due to overload, the device does not automatically switch on again.

1. Wait one to two minutes.
2. Press the overload protection switch **12**.

The standby LED **13** is lit red when all other conditions are fulfilled (see section "Operating panel").

The device is ready for operation.

Operation

Adjusting the pressure plate



The pressure plate is set at the factory for proper operation.



During the first few operating hours, it may be necessary to adjust the pressure plate at brief intervals.

To adjust the pressure plate **25** proceed as follows:



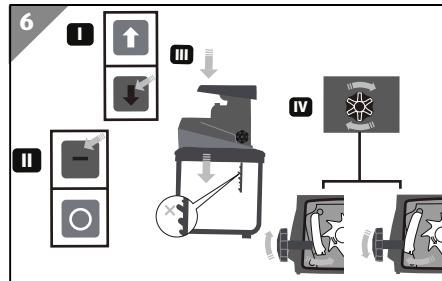
Avoid excessive adjusting of the pressure plate to keep wear to a minimum.

1. Prepare the device for operation (see section "Preparing for operation").
2. Switch the device to **forward** mode (see section "Switching the device ON and OFF").
3. Slowly turn the adjustment dial **5** clockwise until you hear scraping noises.

Small aluminum chips may be ejected.

4. Switch off the device and disconnect the power supply.

The pressure plate is adjusted.



Preparing for operation

1. Place the device on a firm and level surface.
Make sure that there is sufficient clearance at the top and on all sides.
Make sure that there is no material in the hopper **8**.
2. Insert the empty collection container **17** into the device (see section "Inserting the collection container").
3. Connect the supply cord with plug **6** to a suitable socket-outlet.

The device is prepared for operation.

Switching the device ON and OFF

NOTE!

Risk of damage!

- Avoid sudden changes of direction!
- Allow the device to come to a complete stop before switching it on again!



Through poor conditions of the electrical MAINS, short voltage drops can appear when starting the EQUIPMENT. This can influence other equipment (eg. flickering of a lamp). If the MAINS-IMPEDANCE Z_{max} is less than 0,355 OHM, such disturbances are not expected. (In case of need, you may contact your local supply authority for further information).

Switching on the device



The device can only be switched on when the standby LED **13** is lit red (see section "Operating panel").

Operating mode forward:

1. Set the function selection switch **9** to **forward**.
2. Press the ON switch **10**.

*The device is operating in **forward** mode.*

Operating mode reverse:

1. Set the function selection switch **9** to **reverse**.
2. Press and hold the ON switch **10**.

Do not let the device run in reverse mode longer than necessary.

*The device is operating in **reverse** mode.*

Switching off the device

1. Press the OFF switch **11**.
2. Set the function selection switch **9** to the middle position.

The device is switched off!

Using the pusher

Use the pusher **14** if the material you want to shred is not automatically pulled in.

1. Insert the pusher into the hopper **8**.

Operation

2. Using the pusher, lightly push the material against the cutting drum **24**.

Emptying the collection container



Empty the collection container when it is about 3/4 full.

1. Switch off the device (see section "Switching the device ON and OFF").
2. Set the safety switch **4** to **OFF** (down).
3. Pull the collection container **17** out of the base frame **16**.
4. Empty the collection container.
Use the broom **31** to clean remaining material (wood chips and the like) from the top rim of the collection container and the safety switch.
5. Insert the collection container into the device (see section "Inserting the collection container").

The collection container is empty.

Working with the shredder

After the material has been placed into the hopper **8**, the cutting drum **24** automatically pulls it in. The material is crushed, shredded and cut. This promotes the decomposition process during composting.

⚠ WARNING!

Risk of injury!

Material can whip out like a switch when being pulled in. Material or foreign objects ejected from the device can cause injuries.

- Make sure that the hopper is empty before starting the device.
- Always wear sturdy shoes and long pants when working with the device.
- Do not use the device if there are other persons, in particular children, or animals in the vicinity. The operating person is responsible to third parties in the working area of the device.
- When adding material, take particular care that it does not contain metal, stones, bottles, cans or other foreign objects.
- If foreign objects enter the cutting tool or if the device makes unusual noises or vibrates abnormally, turn off the device immediately.
- Switch off the motor and unplug the power plug from the socket before leaving the workplace.

⚠ CAUTION!

Risk of injury!

The knife drum rotating in the device can lead to injuries.

- Do not wear loose fitting clothes or clothes with hanging cords and the like.
- Keep body parts and clothing away from the vicinity of the hopper.
- Do not tip the device when the motor is running.

- **Avoid unintended startup:**
 - When not in use: pull the power plug out of the socket.
 - Make sure that the device is switched off before plugging in the power plug.
 - Switch the device off before unplugging the power plug.
- Always make sure that you are in a balanced standing position with secure footing. Do not lean forward. Never stand higher than the device when adding material.

NOTE!

Risk of damage!

Overheating can damage the device.

- Make sure that the air vents are not covered and are free of dust and shredded material.
- Do not shred branches of an excessively large diameter.
- Check the material you want to shred before you start working. Remove any foreign objects.

Shredding



Empty the collection container **17** when it is around 3/4 full to avoid clogging.



Allow the device to completely empty out when stopping working.

1. Prepare the device (see section "Preparing for operation").
2. Switch the device into **forward** mode (see section "Switching on the device").
3. Put the material into the hopper **8**.

The material will be pulled in automatically. If necessary, use the pusher **14** to push the material down.

The material is shredded.

Removing stuck material

⚠ CAUTION!

Risk of injury!

The knife drum rotating in the device can lead to injuries.

- If the feed chute or the discharge chute of the device gets clogged, switch off the motor and pull the power plug from the socket before you remove the stuck material.
- Never reach into the device with your hands to remove stuck material, even if the device is stopped.

NOTE!

Risk of damage!

Pressing the function selection switch when the motor is running may damage the device.

- Switch the function selection switch only when the device is switched off.

Automated removal

1. Switch off the device (see section "Switching off the device").
2. If the overload protection has been triggered, reset it (see section "Resetting the overload protection").
3. Switch the device into **reverse** mode (see section "Switching on the device").
Jammed material will be transported backwards.
4. Release the ON switch **10**.

The jammed material is removed or it must be removed manually (see section "Manual removal").

Manual removal



When removing and installing components, refer to the overview or the illustration on the cutter cover **23**.

1. Switch off the device (see section "Switching off the device").
2. Disconnect the device from the power supply.

Working with the shredder

3. Use the Allen wrench (26) to remove the four screws (22) of the cutter cover (23).
4. Pull off the cutter cover.
5. Carefully remove caked-on material from the cutting drum (24) and the pressure plate (25).
6. Pull out the cutting drum.
If necessary, use a flat-top screw driver (30) to lever it out.
7. Pull out the pressure plate to the front.
If necessary, use a flat-top screw driver (30) to lever it out.
8. Remove all shredded material from the device.
9. Insert the pressure plate.
10. Insert the cutting drum.
The groove in the cutting drum must be pushed precisely onto the feather key of the drive shaft.
11. Insert the cutter cover.
12. Use the Allen wrench to attach the cutter cover with the four screws (22).

The stuck material is removed.

Cleaning, maintenance and storage

⚠ WARNING!

Risk of electric shock!

Liquid entering the device can cause an electric shock.

- Do not hose the device down with water.
- It is essential to prevent water and other liquids from entering the device.

⚠ WARNING!

Risk of injury!

After the motor has been switched off, the cutting drum continues running for some time and can cause serious injuries.

- Make sure that the switch is set to OFF and the power plug has been unplugged from the socket.

- Wait until all machine parts have come to a complete stop before working on the device.

▲ CAUTION!

Danger of burns!

The device gets hot during operation. You could burn yourself.

- Let the device cool down completely before any cleaning or maintenance.

NOTE!

Improper cleaning might damage the device.

- Do not use any aggressive cleaning agents, brushes with metal or nylon bristles, or sharp or metallic cleaning objects such as knives, rigid scrapers and the like. These can damage the surfaces.
- Remove shredded material from the device. Moist shredded material remaining on and in the device can harden and cause mold to grow.

Cleaning

1. Empty the collection container **17** (see section "Emptying the collection container").
2. Use a broom **31** to brush off the inside and outside of the collection container. Remove wet or sticky residue by washing the collection container with a mild soap solution.
3. Use a broom to brush off the shredder assembly **15** and the base frame **16**.
4. Clean the outside of the device and the accessories with a damp cloth.
5. Remove leftover material in the shredder assembly manually (see section "Manual removal").
6. Allow all components to dry completely.

The device is cleaned.

Maintenance

Perform maintenance on the device at the end of each season.

Cleaning, maintenance and storage

1. Clean the device (see section "Cleaning").
2. Uninstall the cutting drum **24** and the pressure plate **25** (see section "Manual removal").
Check the cutting drum and the pressure plate for excessive wear. If you detect excessive wear, replace these parts.
3. Use a broom **31** or brush **32** to remove loose dirt from the cutting drum, the pressure plate and from the inside of the shredder assembly.
4. Clean all components with a damp cleaning cloth.
5. Allow all components to dry completely.
6. Use a rag or brush and common tool oil **33** to apply a thin film of oil or grease to all metal parts.
7. Completely assemble the device (see section "Manual removal").

Maintenance has been performed on the device.

Storage

NOTE!

Risk of damage!

Improper storage of the device can result in damage.

- Allow the device to completely cool down.
- Place the device so that it can't fall into water.
- Store the device in a clean, dry, frost-protected place out of the reach of children.

Storing the device

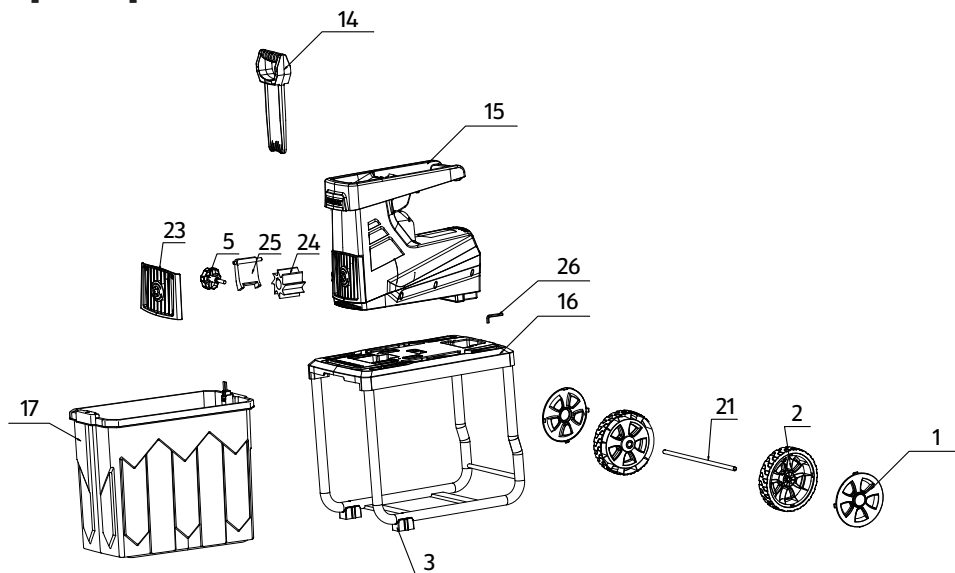
1. Clean the device (see section "Cleaning").
2. Perform maintenance on the device (see section "Maintenance").
3. Store the pusher **14** in the hopper **8**.
4. If possible, cover the device.
Do not completely wrap the device in plastic film and ensure sufficient ventilation.

The device is stored.

Transport

- Exclusively transport the device in normal position; prevent tilting while transporting.
- When transporting the device in vehicles, the device must be secured in accordance with the applicable regulations (load securing).

Spare parts



You can order spare parts directly from the customer service indicated on the last page. When ordering, please indicate the device type and the item number from the exploded drawing.

#	Component	Replacement part no.
14	Pusher	1494ZE0001
15	Shredder assembly	1494ZE0002
26	Allen wrench	1494ZE0003
16	Base frame	1494ZE0004
17	Collection container	1494ZE0005
24	Cutting drum	1494ZE0006
25	Pressure plate	1494ZE0007
5	Adjustment dial	1494ZE0008
23	Cutter cover	1494ZE0009
1	Wheel cover	1494ZE0010
2	Wheel	1494ZE0011
21	Wheel axle	1494ZE0012
3	Support foot	1494ZE0013

Troubleshooting

Fault	Possible cause	Troubleshooting
Standby LED 13 not lit red.	Power supply disconnected	Check the power supply, the socket and the cable for damage and function. Have any damage repaired by a qualified service technician.
	Safety switch 4 on the collection container 17 is set to OFF position (down)	Set the safety switch 4 to the ON position (up).
	Overload protection has been triggered	Reset the overload protection (see section "Resetting overload protection").
Device does not shred	Cutting drum 24 is rotating the wrong way	Switch the device into forward mode (see section "Switching on the device").
	The material you want to shred is too soft	Put in wood or shred dried twigs.
	Cutting drum 24 is blocked	Remove the blockage (see section "Removing stuck material").
Shredded material is discharged in long, continuous pieces	Pressure plate 25 is not adjusted correctly	Adjust the pressure plate (see section "Adjusting the pressure plate").

Troubleshooting

Device makes unusual sounds or vibrates	Foreign object in the device.	Check the device for foreign objects, in particular in the cutting tool (see section "Manual removal").
	Device components have become loose.	Check all components for tight fit, re-tighten if necessary. Check all components for damage and have damaged components replaced by a qualified service technician.

If the problem persists, contact the customer service listed on the last page.

Technical data

Model	GSR2800
Rated power	2800 W (P40)*
Rated voltage	230-240 V~, 50 Hz
Safety class	IPX4
Branch thickness max.	45 mm**
Collection container capacity	approx. 60 l
Weight	approx. 28.5 kg
Wheel size	200 mm

* Continuous operation with intermittent load (20s load - 30s no load)

** The maximum branch thickness depends on the type of wood and the condition of the material to be shredded. With hardwood (e.g. oak/beech branches) the maximum thickness of the branches that can be shredded is less than that of softwood (e.g. pine). The maximum branch thickness may also be lower for dry or knotty wood.

Never exceed the maximum permitted supply impedance of 0.28 ohms at the electrical power supply point.

⚠ WARNING!

Health hazard!

Working without hearing protection or protective clothing can cause damage to health.

- When working with the device, wear hearing protection and suitable protective gear.

Noise emission

Sound pressure level L_{pa} :	72.2 dB(A)
Sound power level L_{WA} :	86.3 dB(A)
Guaranteed sound power level	92 dB(A)
Uncertainty K:	3 dB(A)

Total vibration value

The stated total vibration value and the stated noise emission values have been measured according to a standardised test procedure (EN 13683:2009-09, appendix F) and can be used to compare one power tool with another. They can also be used for a preliminary assessment of the exposure.

⚠ Warning

Vibration and noise emissions while actually using power tool may differ from the values given due to the manner in which the power tool is used and, in particular, the type of workpiece being machined.

It is necessary to establish safety measures that protect the operator based on an estimate of the vibration exposure during actual conditions of use (taking into account all parts of the operating cycle, such as periods when the power tool is switched off and periods when it is switched on but running without load).

Try to keep the exposure to vibrations and noise as low as possible. Examples of measures to reduce vibration include wearing gloves when using the tool, limiting the working time and using accessories in good condition.

Declaration of conformity

Declaration of conformity

Original EU Declaration of Conformity

We,

MEROTEC GmbH
Otto-Brenner-Str. 8, 47877 Willich, Germany

herewith declare under our own, sole responsibility that our product

Electric garden shredder
Model-No. GSR2800

complies with the following directives:

2006/42/EC Machinery directive
2014/30/EU EMC directive
2000/14/EC Outdoor noise directive, amended by 2005/88/EC
Conformity assessment procedure: 2000/14/EC-Annex V
Measured sound power level $L_{wA} = 86,3 \text{ dB(A)}$ ($K = 3 \text{ dB(A)}$)
Guaranteed sound power level $L_{wA} = 92 \text{ dB(A)}$
2011/65/EU^{*)} RoHS directive, amended by (EU) 2015/863

Applied harmonized standards:

EN 50434:2014
EN 50581:2012
EN 60335-1:2012+A11:2014+A13:2017+A1:2019+A14:2019+A2:2019
EN 55014-1:2017
EN 55014-2:2015
EN IEC 61000-3-2:2019
EN 61000-3-11:2001
(BS EN 55014-1:2017
BS EN 55014-2:2015
BS EN IEC 61000-3-2:2019
BS EN 61000-3-11:2001 for UKCA)
EN 62233:2008

Document representative:
Dirk Wohrab
MEROTEC GmbH

Place and date: Willich, 03.12.2020
Authorized signature:


Ronald Menken
General Manager
MEROTEC GmbH



^{*)}The object of the declaration described above is in conformity with Directive 2011/65/EU of the European Parliament and of the Council of 8 June 2011 on the restriction of the use of certain hazardous substances in electrical and electronic equipment.

Disposal

Disposing of packaging



Dispose of packaging according to type. Sort the paperboard and cardboard as waste paper and the film as recyclable material.

Dispose of old electrical device



This symbol indicates that this product may not be disposed of together with domestic waste in compliance with the (2012/19/EU) Regulation pertaining to waste electrical and electronic devices (WEEE). This product must be handed in at a collection point intended for the purpose. This can occur, for example, by handing it in at an authorised collecting point for the recycling of waste electrical and electronic equipment. Owing to potentially hazardous substances that are frequently contained in waste electronic equipment, incorrect handling of waste equipment may have a negative impact on the environment and on the health of human beings. By disposing of this product correctly, you are also contributing towards an efficient use of natural resources. Information on collecting points for waste equipment can be obtained from your local authority, an authorised institution for the disposal of waste electrical and electronic equipment or the waste collection services.