

**Merotec GmbH**  
**Graf-Recke-Straße 82**  
**40239 Düsseldorf, Germany**

**W1**



## High Pressure Washer

Original Operating Instructions



### WARNING:

Read the operating instructions  
before using the machine!

#### AFTER SALES SUPPORT

 GB +44 (0) 845 872 2740  [www.coreservice.co.uk](http://www.coreservice.co.uk)  
IRE +353 (0) 19022605

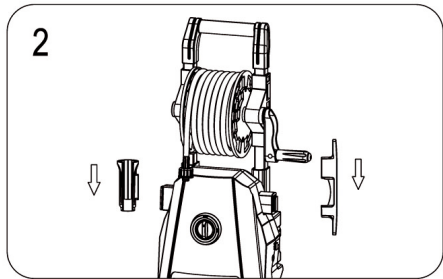
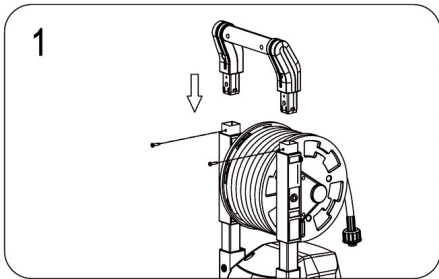
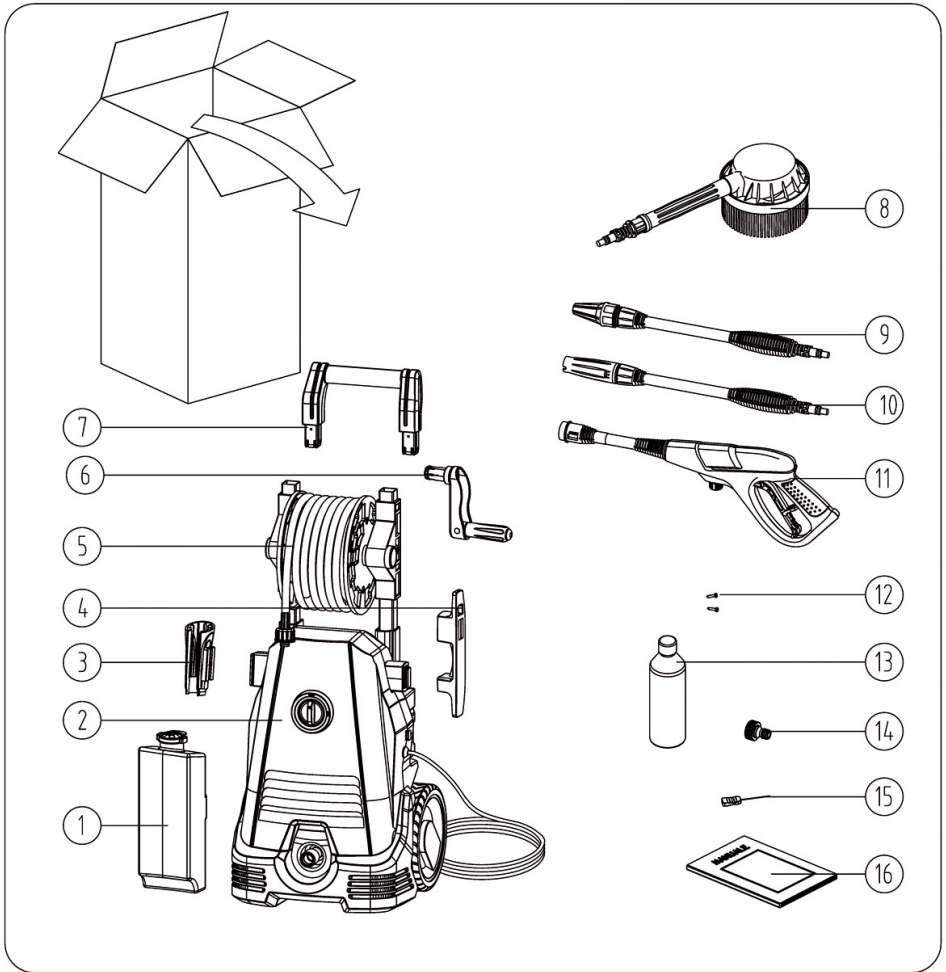
MODEL: Q1W-SP09-1900, 04/2014, 91185

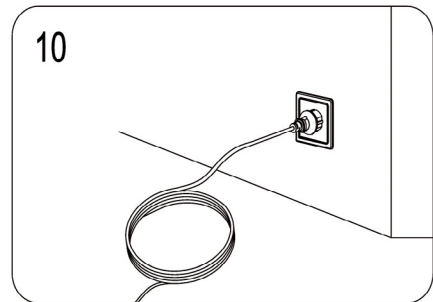
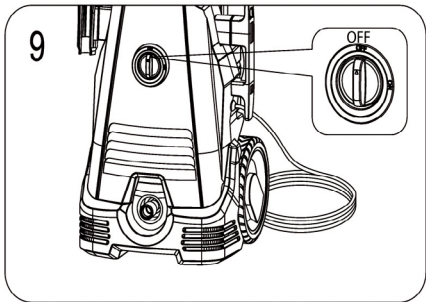
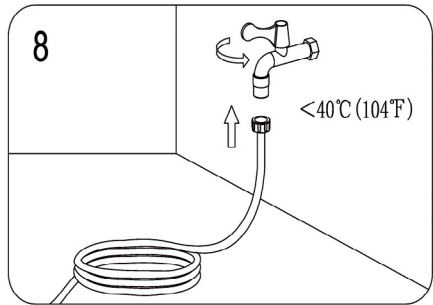
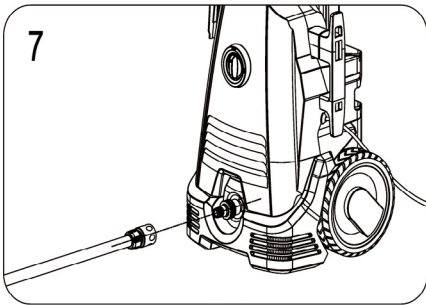
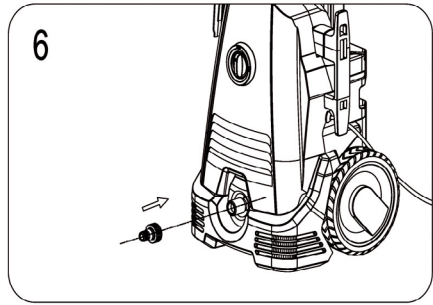
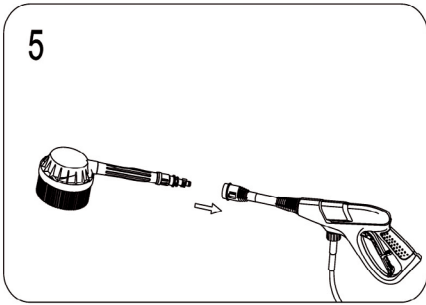
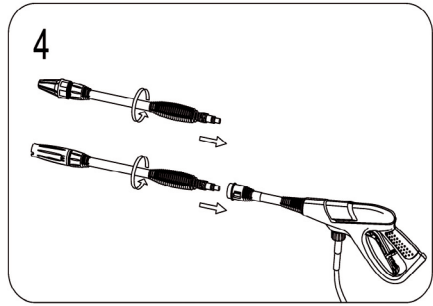
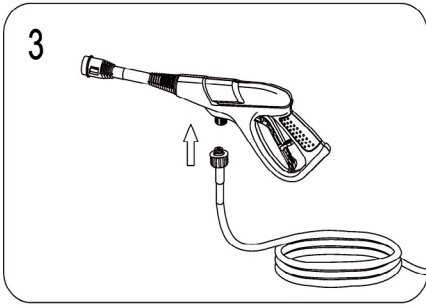
# 3

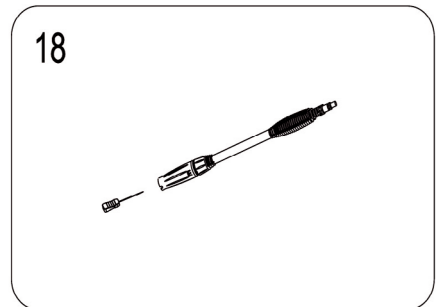
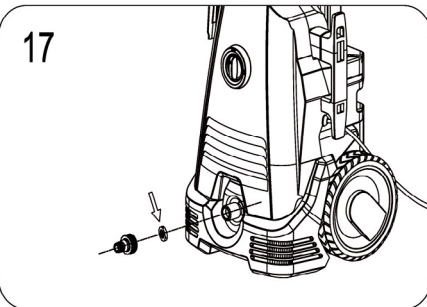
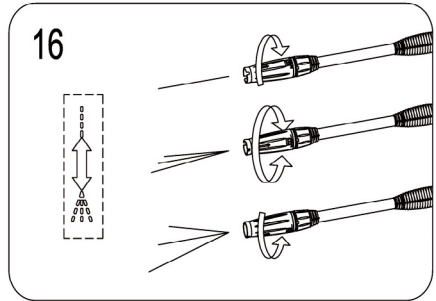
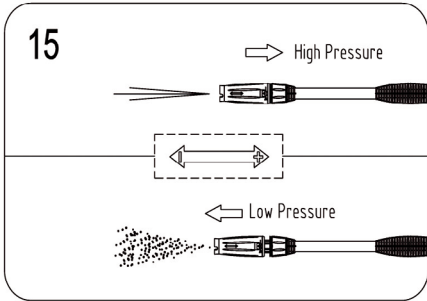
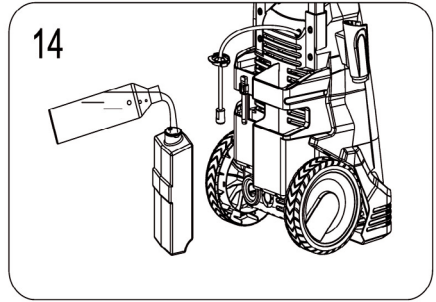
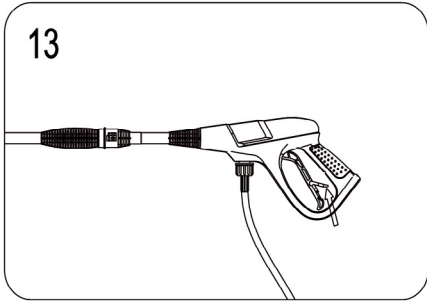
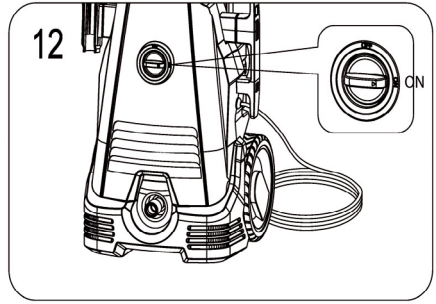
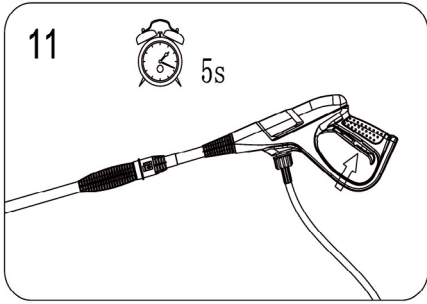
YEAR WARRANTY



**Please fold open!**







# Declaration of Conformity

## EC Declaration of Conformity

We,

**MEROTEC GmbH**

**Graf-Recke-Strasse 82, 40239 Düsseldorf**

herewith declare that our product:

**High-Pressure Washer**

**Model No.: Q1W-SP09-1900**

complies with the following directives:

**Low Voltage Directive 2006/95/EC**

**Machinery Directive 2006/42/EC**

**EMC Directive 2004/108/EC**

**Noise Directive 2000/14/EC**

**RoHS Directive 2011/65/EU**

Harmonised Standards used:

**EN 60335-1:2012**

**EN 60335-2-79:2009**

**EN 55014-1:2006 + A1:2009 + A2:2011**

**EN 61000-3-2: 2006 + A1:2009 + A2:2009**

**EN 61000-3-3:2008**

**EN 62233:2008**

**EN 3744:2010**

**Person authorised to compile the  
technical file:**

**Michael Willms**

**Graf-Recke-Strasse 82**

**40239 Düsseldorf, Germany**

Authorized Signatory

2013-09-01

Signature:



Name: Thorsten von der Heyde

General Manager

MEROTEC GmbH



# Contents

---

<b>6</b>	<b>Description of the symbols</b>	<b>1</b>
<b>8</b>	<b>Safety information</b>	<b>2</b>
<b>12</b>	<b>Parts description / Scope of supply</b>	<b>3</b>
<b>13</b>	<b>Commissioning</b>	<b>4</b>
<b>16</b>	<b>Use</b>	<b>5</b>
<b>20</b>	<b>Maintenance</b>	<b>6</b>
<b>21</b>	<b>Storage, transport</b>	<b>7</b>
<b>23</b>	<b>Troubleshooting</b>	<b>8</b>
<b>25</b>	<b>Disposal</b>	<b>9</b>
<b>25</b>	<b>Technical data</b>	<b>10</b>
<b>26</b>	<b>List of spare parts</b>	<b>11</b>
<b>27</b>	<b>Warranty</b>	<b>12</b>
<b>28</b>	<b>Warranty card</b>	
<b>29</b>	<b>Exploded view</b>	



# Description of the symbols **1**

## Symbols used in the instructions



**IMPORTANT!** Before using this machine, please read all the safety and operating instructions carefully and comply with them. Please pay particular attention to all the sections in these instructions which are marked by these warning symbols and warning information.

If you pass the machine on to other users, please give them these instructions as well.

These symbols have the following meanings when used in conjunction with the signal words shown:



**DANGER** Refers to a danger with a high degree of risk which may result in death or serious injury if it is not avoided.



**WARNING** Refers to a danger with a medium degree of risk which may result in death or serious injury if it is not avoided.



**CAUTION** Refers to a danger with a low degree of risk which may result in slight or moderate injury if it is not avoided.







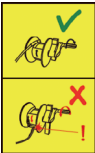



**ATTENTION** Refers to the risk of damage to property or to the machine.



**NOTE** Provides additional important information for the user.



# Symbols on the machine

Symbol	Description
	This is a warning symbol. This symbol is used in the instructions in cases where there is a risk of injury. Ensure that these warnings are read and understood at all times.
	Isolate from the power supply immediately if the cord is damaged, becomes twisted or knotted, if it splits or in the event of the machine being left unattended, even for a short period.
	<b>WARNING:</b> Never direct the water jet directly at people, animals, the machine or electrical components.
	The machine may not be connected directly to the drinking water supply. If necessary, please only use it together with a water backflow preventer or with an intake hose set conforming to IEC 61770.
	In order to rewind the high-pressure hose, the crank of the hose reel may only be rotated clockwise. The hose and the machine may be damaged if the hose is rewound in the opposite direction.
	Guaranteed sound power level in accordance with directive 2000/14/EC
	Double insulation, class II machine
	Electrical machines may not be disposed of in the domestic waste. Have the machine disposed of properly. The plastic and metal parts may be separated and placed in recycling facilities.

# Safety information

# 2



## **WARNING** Read all the safety information and instructions.

Failure to comply with safety information and instructions may result in electrocution, fire and/or serious injuries.

**Please retain all safety information and instructions for future reference.**

## Hazards for children and inexperienced people

- This machine may be used by people with reduced physical, sensory or mental capacity or with a lack of experience and knowledge provided they are supervised or are instructed in how to use the machine safely and have understood the resulting dangers.
- The machine may not be used by children. Supervise children to ensure that they do not play with the machine.
- Do not allow the machine to be operated by people who have not familiarised themselves with the operating instructions.
- Keep packaging materials and plastic wrapping out of the reach of babies and small children. Risk of asphyxiation!

## Water connection

- The machine may not be connected directly to drinking water pipes. If necessary, please only use it together with a water backflow preventer or with an intake hose set conforming to IEC 61770.
- Water which has flowed through the backflow preventer is not considered drinkable.



## Hazards when operating the machine

- High-pressure jets can be dangerous if they are used incorrectly. The jet may not be directed at people, animals, live electrical equipment or at the machine itself - risk of injury!
- Do not use the machine within range of other people unless they are wearing protective clothing.
- Do not direct the jet at yourself or at other people in order to clean clothing or footwear.
- Do not spray flammable liquids and do not use the machine in areas which are potentially explosive - risk of explosion!
- Before using the machine for the first time, familiarise yourself with the operating features and the safety functions of the machine and of the spray gun.
- Do not use the machine if any of the connecting pipes or important parts of the machine are damaged, such as securing mechanisms, high-pressure hoses, spray gun.
- High-pressure hoses, valve fittings and couplings are important for the safety of the machine. Only use high-pressure hoses, valve fittings and couplings which are recommended by the manufacturer.
- In order to ensure that the machine is safe to operate, only use OEM spare parts from the manufacturer or spare parts which have been approved by the manufacturer.
- This machine has been developed to be used with the detergent which is supplied or recommended by the manufacturer. The safety of the machine may be adversely affected if you use other detergents or chemicals.
- Remove the plug from the socket
  - if you wish to attach or remove accessories,
  - prior to cleaning and maintenance and
  - if you leave the machine unattended, even for a short time.



- When operating the high-pressure washer, wear suitable personal protective equipment (PPE), such as protective footwear, protective gloves, helmets with a visor, ear protectors, etc.

## Electrical safety

- Only connect the machine to a correctly installed socket with an earthing contact and with a mains voltage in accordance with the rating plate on the machine.
- The mains connection must be fitted by an experienced electrician and meet the requirements of IEC 60364-1.
- We recommend that the power supply for this machine either be delivered via a residual-current circuit-breaker which interrupts the energy supply as soon as the leakage current exceeds 30 mA for 30 ms, or via an earth tester.
- If the mains power cord for this machine is damaged, it must be replaced by the manufacturer, its Customer Service or by a similarly qualified person in order to avoid risks.
- If an extension lead is used, the plug and coupling must be water-proof and may not sit in water. Plugs and couplings must be marked IP44.
- Unsuitable extension leads may be dangerous. Risk of electrocution!
- Do not open the machine housing; in the event of malfunctions, please contact our Customer Service.

## Correct use

- The machine is intended to be used for cleaning the walls of buildings, facades, patios, footpaths, garden equipment, machines, vehicles, tools, etc. with a pressurised water nozzle. If necessary, you can also use the machine with a detergent feed.
- The machine is not intended for industrial use, it is only suitable for domestic use.

- The machine must be operated in compliance with the information contained in these instructions. If the machine is used for any purpose other than its intended use and which is not described in these instructions, this will be viewed as unauthorised use and releases the manufacturer from its liability.

## Remaining risks

Even if you use this electrical machine in accordance with the regulations, there will always be other risks remaining. The following hazards may arise in connection with the structural design and embodiment of this high-pressure washer:

- Damage to health resulting from hand and arm vibrations if you operate the machine over a lengthy period of time, or fail to operate or maintain it correctly.
- Eye injuries caused by the high-pressure water jet or by parts or particles of dirt being expelled. They can cause serious eye injuries if you do not wear appropriate eye goggles.
- Injuries to the skin caused by inadvertent impact by the high-pressure water jet or by expelled parts and particles of dirt if you do not wear suitable protective equipment, clothing or solid footwear.
- Damage to hearing caused by noise pollution. Your hearing may become impaired if you work for a lengthy period of time without wearing ear protection.

# Parts description / Scope of supply

# 3

1. Detergent reservoir
2. High-pressure washer
3. Spray gun holder
4. Cord bracket
5. High-pressure hose
6. Hand crank
7. Handle
8. Rotating brush (low-pressure accessories)
9. Turbo lance
10. Variable spray lance (used with a high-pressure nozzle)
11. Spray gun
12. 2 cross recessed pan head tapping screws
13. Cleaning solution
14. Water intake adapter
15. Nozzle needle
16. Translation of the original operating instructions



## NOTE

The following accessories which are required for operation are not included in the scope of supply. The user can purchase these accessories in local shops.

1 off water hose

1 off water backflow preventer

(a water backflow preventer must be used if the machine is to be connected to the drinking water supply)



# Commissioning

# 4

## Unpacking

Unpack the machine and the accessories carefully and, referring to the diagram and to the list on pages 1 and 12, check that all the listed parts are present.

Completely remove all the packaging materials and ensure that all the parts are undamaged and in proper working order.

Do not put a damaged or incomplete machine into operation; instead, contact our Customer Service or the dealer from whom you bought the machine.

## Assembly



### WARNING

Remove the plug at the mains before performing any work on the machine and only use OEM accessories.

The following operational steps are required in order to make the machine ready for service. The diagrams can be found on pages 1 to 3 of the brochure cover.

### Assembling the handle (Figure 1)

- Place the handle onto the high-pressure washer. Secure it in place with the two enclosed cross recessed pan head tapping screws.

### Attaching the brackets for the spray gun and cord (Figure 2)

- Insert the two brackets, as illustrated, into the receptacles on the machine as far as they will go.

### Connecting the hose to the spray gun (Figure 3)

- Remove the protective cap from the threaded connector of the spray gun (11) and screw the high-pressure hose (5) securely to the spray gun.

### Connecting the lance to the spray gun (Figure 4)

- Insert the turbo lance (9) or the spray lance (10) into the connection on the spray gun (11) and turn the lance clockwise by 90° to lock it in this position.



## Fitting the water intake adapter (Figure 6)

- Remove the protective cap from the threaded connector of the high-pressure washer and screw the adapter for the water intake (14) onto the threaded connector, hand-tightened.



### NOTE

Take good care of the protective caps for the storage of the machine.

## Connecting the intake hose to the machine (Figure 7)

- Connect the intake hose to the high-pressure washer with a quick-action coupling (not included in the scope of supply) using the adapter for the water intake (11).

## Connecting the intake hose to the water supply (Figure 8)



### WARNING

The machine may not be connected directly to the drinking water supply. In this case, use a water backflow preventer or an intake hose set approved in accordance with IEC 61770.

- Connect the intake hose to the water supply and open the intake valve. The temperature of the water may not exceed 40 °C.

## Switching off the mains switch (Figure 9)

- Ensure that the ON/OFF switch on the machine is switched off (at the OFF position).

## Creating a mains connection (Figure 10)

- Insert the mains plug into a correctly installed socket with an earthing contact with an AC voltage supply in accordance with the machine's rating plate.

## Operation



### WARNING

Familiarise yourself with all the operating features before putting the machine into operation. Ensure before use that the machine is in proper working order.

Wear suitable clothing, as well as ear protectors and goggles when working with the machine.



Check that the machine is in a safe state:

- Inspect the machine and accessories for visible damage.
- Check that all the parts of the machine are securely fixed in place.
- Check that there are no leaks from the water connection and high-pressure pipes.

## Starting and stopping



### ATTENTION

Never operate the machine without water because the pump may be damaged if it is run dry. If the intake water is impure, use a water filter.

### Starting

1. Open the valve for the water intake. (Figure 8)
2. Disengage the yellow safety catch on the spray gun by pushing it down until it clicks in place.
3. Press the trigger until a steady stream of water is discharged. (Figure 11) Then release the trigger.
4. Set the ON/OFF switch to ON in order to switch on the machine. (Figure 12)
5. Press the trigger again to commence the cleaning work.

### Stopping

1. Release the trigger.
2. Set the ON/OFF switch to OFF in order to switch off the machine. (Figure 9)
3. Briefly press the trigger until the machine is depressurised.
4. Lock the trigger by flipping the yellow safety catch up until it becomes engaged. (Figure 13) This prevents it from being started again inadvertently.
5. Close the valve for the water intake.



## Safe working practice



### WARNING

Please adhere to the following rules of conduct when working with the high-pressure washer. The high-pressure jet can cause serious injuries and/or damage to property.

- The jet may not be directed at living things (people, animals), live equipment or at the machine itself.
- Always wear personal protective equipment, such as protective footwear, protective gloves, goggles, ear protectors, etc. when working with the high-pressure washer.
- Place the high-pressure washer on a flat, stable surface. Only operate it upright, never lying on its side.
- Ensure that there are no people or animals in the area you are working in.
- Before starting any cleaning working, check that there are no potentially dangerous objects within the work area. Remove any object from the work area which could pose a tripping hazard, such as toys or garden furniture. Ensure that all doors and windows are securely closed.
- Always ensure that you are standing steady, especially due to the possible kickback when you press the trigger on the spray gun.
- Always switch the high-pressure washer off and depressurise the system before attaching or removing accessories, cleaning or carrying out maintenance on the machine, and if you leave the machine unattended, even for a short time.
- After switching the machine off, always engage the yellow safety catch on the trigger in order to prevent the high-pressure jet from being triggered inadvertently.
- Surfaces may be damaged by the high-pressure jet. Stay clear of painted or other sensitive surfaces. Where necessary, test it on an inconspicuous place.
- Be especially careful when washing tyres. Car tyres and tyre valves may be damaged or burst if they are not treated properly. Initial signs of damage are discolouration on the tyres. Damaged car tyres and tyre valves put lives in danger. Keep the jet at least 30 cm away from them!



- Only use the high-pressure washer to clean the walls of buildings, facades, patios, footpaths, garden equipment, machines, vehicles and tools which are suitable for this.
- Car engines and other objects which are soiled with oil and lubricants may only be cleaned on surfaces from which the waste water is diverted through an oil separator.
- Do not spray any objects which contain harmful substances (such as asbestos).
- Keep the high-pressure jet away from the power cord and from the high-pressure hose and ensure that they are not driven over, squeezed or otherwise subjected to stress.
- Only operate the high-pressure washer in well ventilated areas and keep it uncovered so that it does not overheat.
- Before commencing your work, also comply with the regulations of quiet times in your local area when working with noisy machines.

## Working with the high-pressure jet

Hold the spray gun and lance steady with both hands. Be prepared for the possibility of the spray gun recoiling when it is switched on.

- Disengage the safety catch and press the trigger on the spray gun.

The high-pressure pump starts to run as soon as you switch on the spray gun.

The high-pressure pump stops the moment you release the trigger on the spray gun.

## Using the adjustable spray lance (Figures 15, 16)



### CAUTION

The high-pressure jet is very aggressive. Do not adjust any settings while you are spraying.

The adjustable spray lance (10) is the universal tool for high-pressure work. It facilitates two types of jet adjustment.

By **moving the nozzle head** longways, you can adjust the jet pressure:



- Pull the nozzle head forward to lower the pressure and push the nozzle head back to raise the pressure. (Figure 15)

By **turning the nozzle head** through 180°, you can adjust the width of the jet from spot jet to flat jet:

- Turn the nozzle head counterclockwise to set a spot jet. The further you turn the nozzle head in a clockwise direction, the wider the flat jet becomes. (Figure 16)



#### NOTE

The spot jet is especially suitable for cleaning very soiled, narrow places, whereas the flat jet is ideal for cleaning wide areas.

## Using the turbo lance

The turbo lance (9) creates a rotating jet of water which can be used to remove stubborn dirt.



#### ATTENTION

When you use the turbo lance, there is a very great risk of damaging sensitive surfaces. Apply it carefully, starting off with a large working distance and reducing it as required.

- Stop the machine and switch the ON/OFF switch to OFF.
- Press the trigger on the spray gun briefly to reduce the system pressure.
- Insert the turbo lance instead of the spray lance. (Figure 4)

## Using the rotating brush

The rotating brush (8) is a tool for cleaning surfaces with care. The brush is driven here by the high-pressure jet, and the water only strikes the surface being cleaned at low pressure.

The cleaning effect is achieved by the action of the brush, and the loosened dirt is washed away by the water.

- Stop the machine and switch the ON/OFF switch to OFF.
- Press the trigger on the spray gun briefly to reduce the system pressure.
- Insert the rotating brush instead of the spray lance or the turbo lance. (Figure 5)



## Automatic feed of detergents



### WARNING

Only use the detergents supplied or recommended by the manufacturer. The safety of the machine may be adversely affected if you use other detergents or chemicals.

Following direct contact between the detergent and your skin or mucous membrane, rinse with lots of clear water and seek medical attention, if necessary.

This high-pressure washer is equipped with a device for automatically feeding detergents to the jet of water. Procedure for using this function:

- Lock the trigger on the spray gun by flipping the yellow safety catch up until it becomes engaged. (Figure 13)
- Remove the sealing cap from the detergent tank (1) on the back of the machine and pull the hose out. (Figure 14)
- Take the detergent tank off the bracket and fill it with detergent.
- Place the detergent tank back onto the bracket, reinsert the hose and replace the sealing cap.
- Fit the adjustable spray lance (10) onto the spray gun.
- Set the nozzle head to the low pressure position by pulling it forward. (Figure 15)
- Disengage the safety catch and press the trigger on the spray gun to start work.



# Maintenance



**DANGER** of electrocution

Before carrying out any maintenance and cleaning work, switch the machine off and remove the plug from the socket.

Do not clean the machine with a high-pressure jet of water!

## Cleaning

### Machine

Clean the machines by wiping it and the accessories with a slightly damp cloth.

### Dirt filter

The high-pressure washer is equipped with a dirt filter as protection for the pump. If this filter is not kept clean, the flow of water to the machine is restricted, and the pump may become damaged.

- Check the filter every time you use the machine and clean it, if necessary. To do this, proceed as follows:
  - Unscrew the adapter for the water intake (14) and lift out the filter (arrow). (Figure 17)
  - Rinse out the filter until it is free from deposits and dirt.
  - Reinsert the filter and the adapter for the water intake.

### High-pressure nozzle

Where necessary, clean the high-pressure nozzle using the nozzle needle (15) that is supplied. (Figure 18)

## Maintenance

The high-pressure washer's pump does not require maintenance. No additional care measures are required.



# Storage, transport



**ATTENTION** Machine may be damaged by frost  
There is always residual water left inside the high-pressure washer and in the pump. Do not store the machine at temperatures below freezing point in order to avoid frost damage.

## Storage

### Accessories

The spray lances and the rotating brush can be kept in the accessories compartment beside the detergent tank on the back of the machine.

- Keep the spray gun in the bracket for the spray gun (3) by clicking it into place with the handle facing up.

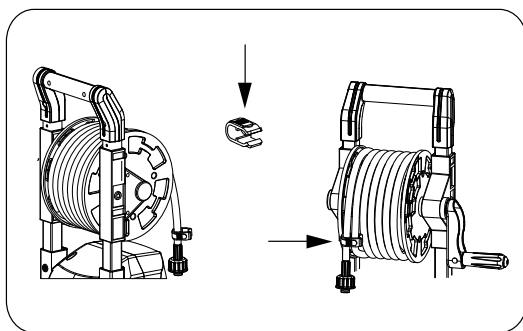
### Machine

- In order to store the machine, unscrew the high-pressure hose from the threaded connector for the spray gun and wind the hose around the hose reel.

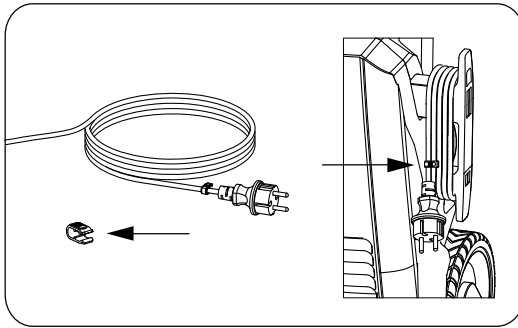


**ATTENTION** In order to rewind the high-pressure hose, the crank of the hose reel may only be rotated clockwise. The hose and the machine may be damaged if the hose is rewound in the opposite direction.

- Secure the end of the hose with the hose clamp (arrow), as shown in figure.



- Place the protective cap onto the threaded connector in order to avoid dirt and damage.
- Wind the power cord onto the cord bracket (4).
- Secure the end of the cord with the cord clamp (arrow), as shown in figure.



If the machine is not going to be used for a lengthy period of time, empty the detergent tank and drain the water out of the hoses.

Store the machine upright in a dry, frost-free, well ventilated place, out of the reach of children.

## Transport

Where possible, use the original packaging for transport.

# Troubleshooting

# 8



## WARNING

Do not make any attempt to repair the machine yourself. You can put your life at risk through electrocution, and this can cause damage to the machine and invalidate your warranty.

The table below is a useful point of reference if malfunctions occur.

## Troubleshooting table

Fault	Cause	Solution
Not functioning	- Power supply interrupted	- Check the power connection, cord and fuse; if necessary, have them repaired by an electrician
	- Machine switched off - Defective components, e.g. switches, motor	- Activate the ON/OFF switch - Consult Customer Service
Machine works with interruptions	- Power cord damaged	- Consult Customer Service
	- Internal electrical connection has come loose - ON/OFF switch defective	
No or minimal build-up of pressure	- Air in the system, needs to be vented	- Operate the machine without the high-pressure hose connected until the water emerges clear of bubbles. Attach the hose again.
	- No or inadequate water intake	- Check / open the intake valve - Check the intake hose for leaks or blockages
	- Clogged dirt filter	- Check and clean the filter
	- Spray lance set to low pressure	- Check the spray lance setting
	- Machine draws in air	- Check the intake hose for leaks



Fault	Cause	Solution
Large fluctuations in pressure	- High-pressure nozzle clogged	- Clean the high-pressure nozzle
	- Inadequate water pressure	- Check the water pressure
	- Intake hose bent	- Check the intake hose
Leaks in the machine	- Hose connections loose	- Hand-tighten the water intake adapter and the high-pressure hose screw connection
	- Leaks from the pump or internal connections	- Consult Customer Service

If the guidance given does not prove successful, contact our Customer Service or an authorised service workshop.

## Customer Service

Only have your high-pressure washer repaired by qualified specialists and only using OEM spare parts. This ensures that the safety of the machine is maintained.

If you have any questions or wish to place any orders, please contact our service partner:

Sumec UK co. Ltd.  
 Trading as Core Service  
 Unit A & B, Escrick Business Park  
 Escrick, York  
 YO19 6FD  
 United Kingdom

Tel: +44 (0) 845 872 2740 (GB)  
 +353 (0) 19022605 (IRE)  
 E-mail: support@coreservice.co.uk  
 Web: www.coreservice.co.uk

These operating instructions can be obtained as PDF file from our customer service.

## Disposal of packaging

The product packaging consists of recyclable materials. Separate it and dispose of it in the collection systems provided.

## Disposal of electrical equipment

Waste electrical and electronic equipment may not be disposed of in the normal household waste.

In accordance with European directive 2002/96/EC, equipment must be disposed of correctly at the end of its useful life. Valuable materials contained in the equipment is recycled, avoiding environmental pollution.

Take the waste equipment to a WEEE collection point or to a materials collection centre.

For further information, contact your local waste management operator or your local council.

# Technical data

# 10

Model	Q1W-SP09-1900
Operating voltage	230 V - 240 V~, 50 Hz
Power consumption	2200W
Weight	11.6 kg
Safety class	Class II
Degree of protection:	IPX5
Max. flow rate	5.0 l/min 7.5 l/min
Water temperature	≤ 40°C (104 °F)

Max. input pressure	1.0 MPa
Operating pressure	11 MPa
Max. pressure	15 MPa
Sound power level	$L_{pA} = 80 \text{ dB(A)}$
Measurement uncertainty	$K_{pA} = 3 \text{ dB}$
Guaranteed sound power level	$L_{WA} = 90 \text{ dB(A)}$
Vibrations in the spray gun handle	$a_h = 2.0 \text{ m/s}^2$
Measurement uncertainty	$K = 1.5 \text{ m/s}^2$

# List of spare parts

# 11

The following spare parts and accessories are available via our Customer Service Department:

No.	Part No.	Designation
1	1136C01	Male water supply connector
2	1108003	S1600 knob
3	1136001	main panel
4	1136002	Vice panel
5	1136C02	Pump assembly
6	1136C03	Motor hood
7	401705	Cable anchorage
8	1136C04	Switch box
9	1136C05	Wheel
10	1130007	Gun rack holder
11	1119005	Gun holster
12	1130017	Rear housing
13	1130008	Cord rack holder
14	1129010	Cord bracket
15	1130013	Detergent tank
16	1136C06	Detergent hose
17	1119003	Detergent tank cap
18	1130012	Accessories holder
19	1142005	Nozzle pin
20	1136C07	Hose reel crank
21	1136C08	Right alu. bar assembly

No.	Part No.	Designation
22	1136C09	Carrying handle
23	1136C10	Left alu. bar assembly
24	1128806	Hose assembly (short)
25	1119020	Bracket plate pinch
26	1136C11	Hose reel
27	1119202	Rotary joint assembly
28	1136801	Hose assembly
29	1136C12	Cleaning agent
30	1132802	Rotary brush
31	1106B14	Turbo lance
32	1106B10	Spray lance w/high-pressure nozzle
33	1106B12	Spray gun
34	B400043F	Cross recessed pan head tapping screw ST3.5X13
35	1119208	U-shape pin
36	B400067F	Cross recessed pan head tapping screw ST3.5X13
37	B400013F	Cross recessed pan head tapping screw ST3.5X13
38	B504008B	Washer Ø 8
39	B304025B	Hexagon socket cap screw M8X25
40	B504006	Washer Ø 6
41	B400063F	Cross recessed pan head tapping screw ST3.5X13
42	B282015H	Split washer Ø 9

# Warranty

# 12

The machine comes with a three-year warranty which begins on the day of purchase. Please retain the till receipt as proof of purchase.

During the warranty, a defective high-pressure washer can be returned free of charge to our service address. You will then receive a new or repaired machine by return.

Before sending the machine for repair, please call our service on the phone number stated below. We will send you a return label for sending us your machine free of charge.

Once the warranty has elapsed, you can also send the defective machine to the address below for repair. You will be charged for repairs arising after the warranty has elapsed. Your statutory rights are not affected by this warranty.



## HIGH-PRESSURE WASHER

### Your details:

Name \_\_\_\_\_

Address \_\_\_\_\_

\_\_\_\_\_

 \_\_\_\_\_ E mail \_\_\_\_\_

Date of purchase\* \_\_\_\_\_

\* We recommend you keep the receipt with this warranty card

Location of purchase \_\_\_\_\_





### Description of malfunction:

### Return your completed warranty card to

**Sumec UK co. Ltd.**  
**Trading as Core Service**  
**Unit A & B, Escrick Business Park**  
**Escrick, York**  
**YO19 6FD**  
**United Kingdom**

**Email: [support@coreservice.co.uk](mailto:support@coreservice.co.uk)**  
**Web: [www.coreservice.co.uk](http://www.coreservice.co.uk)**

### AFTER SALES SUPPORT

  +44 (0) 845 872 2740  [www.coreservice.co.uk](http://www.coreservice.co.uk)  
 +353 (0) 19022605

MODEL: Q1W-SP09-1900, 04/2014, 91185

# 3

YEAR WARRANTY

# Exploded view

