

PowerG[®]

135W Orbital Sander

PG135OS




Manufacturer: SUMEC Hardware & Tools Co., Ltd
1# Xinghuo Road, National level Nanjing High-Tech Zone,
Nanjing 210061 P.R. China



Picture A











TECHNICAL SPECIFICATION

Orbital Sander	PG135OS
Voltage supply	230~240 V
Frequency	50 HZ
Rated Power	135W
No – load Speed	10000 min ⁻¹
Sanding Pad	90 X 187 mm
Sound Pressure Level	87.3 dB(A) K=3 dB(A)
Sound Power Level	98.3 dB(A) K=3 dB(A)
Vibration	a _h =6.531 m/s ² K=1.5 m/s ²
Protecting class	II / 

DESCRIPTION OF SYMBOLS

Please read all of the safety and operating instructions carefully before using this tool. Please pay particular attention to all sections of this User Guide that carry warning symbols and notices.

	Read instruction manual!
	Observe caution and safety notes!
V	Voltage
W	Watts (Effective power)
n_0	No-load speed.
	Protect electrical power tool from moisture!
	Caution – electric shock! Danger to life!
	Check that the device, mains lead and plug are in good condition!
	Safety class II
	Wear hearing protection, dust protection mask, protective glasses and protective gloves.
	Dispose packaging and appliance in an environmentally -friendly way!

GENERAL OPERATIONAL PRECAUTIONS

WARNING! When using electric tools, basic safety precautions should always be followed to reduce the risk of fire, electric shock and personal injury, including the following.

Read all these instructions before operating this product and save these instructions.

For safe operations:

1. Keep work area clean. Cluttered areas and benches invite injuries.
2. Consider work area environment. Do not expose power tools to rain. Do not use power tools in damp or wet locations. Keep work area well lit.

Do not use power tools where there is risk to cause fire or explosion.

3. Guard against electric shock. Avoid body contact with earthed or grounded surfaces (e.g. pipes, radiators, ranges, refrigerators).
4. Keep children and infirm persons away. Do not let visitors touch the tool or extension cord. All visitors should be kept away from work area.
5. Store idle tools. When not in use, tools should be stored in a dry, high or locked up place, out of reach of children and

infirm persons.

6. Do not force the tool. It will do the job better and safer at the rate for which it was intended.

7. Use the right tool. Do not force small tools or attachments to do the job of a heavy duty tool. Do not use tools for purposes not intended; for example, do not use circular saw to cut tree limbs or logs.

8. Dress properly. Do not wear loose clothing or jewelry, they can be caught in moving parts. Rubber gloves and non-skid footwear are recommended when working outdoors. Wear protecting hair covering to contain long hair.

9. Use eye protection. Also use face or dust mask if the cutting operation is dusty.

10. Do not abuse the cord. Never carry the tool by the cord or yank it to disconnect it from the receptacle. Keep the cord away from heat, oil and sharp edges.

11. Secure work. Use clamps or a vise to hold the work. It is safer than using your hand and it frees both hands to operate tool.

12. Do not overreach. Keep proper footing and balance at all times.

13. Maintain tools with care. Keep cutting tools sharp and clean for better and safer performance. Follow instructions for lubrication and changing accessories. Inspect tool cords periodically and if damaged, have it repaired by authorized service center. Inspect extension cords periodically and

replace, if damaged. Keep handles dry, clean, and free from oil and grease.

14. Disconnect tools. When not in use, before servicing, and when changing accessories such as blades, bits and cutters.

15. Remove adjusting keys and wrenches. Form the habit of checking to see that keys and adjusting wrenches are removed from the tool before turning it on.

16. Avoid unintentional starting. Do not carry a plugged-in tool with a finger on the switch. Ensure switch is off when plugging in.

17. Use outdoor extension leads. When tool is used outdoors, use only extension cords intended for outdoor use.

18. Stay alert. Watch what you are doing. Use common sense. Do not operate tool when you are tired.

19. Check damaged parts. Before further use of the tool, a guard or other part that is damaged should be carefully checked to determine that it will operate properly and perform its intended function. Check for alignment of moving parts, free running of moving parts, breakage of parts, mounting and any other conditions that may affect its operation. A guard or other part that is damaged should be properly repaired or replaced by an authorized service center unless otherwise indicated in this handling instructions. Have defective switches replaced by an

authorized service center. Do not use the tool if the switch does not turn it on and off.

20. **Warning!** The use of any accessory or attachment, other than those recommended in this handling instructions, may present a risk of personal injury.

21. Have your tool repaired by a qualified person. This electric tool is in accordance with the relevant safety requirements. Repairs should only be carried out by qualified persons using original spare parts. Otherwise this may result in considerable danger to the user.

PRECAUTIONS ON USING SANDER

- Use only for dry sanding jobs.
- Insulation of sanding dust is dangerous to your health. Always work with deduster switched on.
- The dust exhaust openings of abrasive-coated paper and rubbing plate must largely match.
- Do not apply any additional pressure to the machine while sanding. The weight of the machine itself is sufficient.
- **Warning:** Wear hearing protection device.
- **Warning!** Contact with or inhalation of dust coming free during sanding (e.g. lead painted surfaces, woods and metals), can endanger the health of operator and bystanders. Always wear appropriate personal equipment as a dust mark

and connect the external dust extraction devices during sanding.

APPLICATION

Intended Use

This orbital sander only operates when dry sanding on, and, with suitable grained abrasive sheets, is suitable for the following work..

Surface sanding on wood, metal, and filler surfaces, removal of layers of old paint, intermediate grinding rust removal. Do not use machines, tools and accessories for additional applications (see manufacture's instructions) for works other than those for which they are designed for all other applications are expressly ruled out.

Check the delivery parts

Carefully remove the machine from its packaging and check as the following parts are complete:

- Orbit sander
- Dust extractor

--1 pc Sanding Paper

--Operating Instruction

If any parts are missing or damaged, please contact with your dealer.

Product Features

The numbering of the product features refers to the illustration of the machine on the graphics page (Pic.A)

1. Enclosure
2. On / OFF Switch
3. Lock Button
4. Cord Sleeve
5. Clamp
6. Base Plate
7. Hoover Adapter

The accessories illustrated or described are not included as standard delivery.

Operation

ON/OFF

Insert mains plug into an outlet

Switch on: press ON/OFF switch for instant starting and press lock button together for continuous work..

Switch off: press ON/OFF switch again to release lock button.

Insert Abrasive Sheets

Switch off machine. Pull out the mains plug. Trim edges of sanding sheet.

Release Clamping fixtures holding sanding sheet.

Place sanding Sheet tightly over the sanding pad, making certain that the holes in pad and patch line up. Fold over projecting paper and clamp in place with the clamping devices for sanding.

Deduster connection

Connect deduster hose to the adapter supplied.

For long periods of working with wood for commercial use on materials that produce dust that is detrimental to health, the machine is to be connected to a suitable external dust extraction device.

The dust that is produced while working can be detrimental to health, inflammable or explosive. Suitable safety measures are required.

Examples: Some dusts are regarded as carcinogenic. Use suitable dust/clip extraction and wear a dust respirator.

Sanding

Turn on machine. Move grinding surface over the material to be ground/sanded with slightly elliptical movements. Do not apply any additional pressure, the weight of the machine itself is sufficient. Conduct a number of sanding steps with increasingly finer grains.

Cleaning and Maintenance



CAUTION! From time to time, clean dust exhaust

openings with a dry brush. Clean the housing only with a damp cloth, do not use any solvents! Dry thoroughly afterwards.

Store the machine. Operating instruction and where necessary the accessories in the original packaging. In this way, you will always have all the information and parts ready to hand.

Do not dispose of electrical appliances with your domestic waste!



The packaging comprises exclusively environmentally-friendly material. Dispose of it in your local recycling containers.



Guarantee and Service

This product is guaranteed for 1 year from the original date of purchase, the guarantee applies to material and production defects. This warranty is not valid without the original dated receipt of purchase.

If the product shows defect as a result of material and production defects during the period of guarantee, providing that the product has been used properly and for the purpose which it has been intended, then faulty products will either be replaced or refunded.

The guarantee does not cover accidental damage or misuse.

This product must be used in accordance with the instructions contained in this manual.

The guarantee will be rendered invalid if the product has been damaged by unauthorised repairs or resold.

Accessories are not covered by the guarantee.

If you have any problems or questions concerning the product, please contact our customer helpline on 0844 856 0793.

SUMEC

Declaration of Conformity

We,

SUMEC Hardware & Tools Co.,LTD

**1# Xinghuo Road, National level Nanjing High-Tech
Zone, Nanjing 210061 P.R. China**

Declare that the product

Orbital Sander

Model No. PG135OS

Complies with the essential safety and health requirement
of the following directives:

2006/42/EC

2004/108/EC

2006/95/EC

Standards and technical specification referred to:

EN55014-1:2006

EN55014-2:1997+A1:2001

EN61000-3-2:2006

EN61000-3-3:1995+A1:2001+A2:2005

EN60745-1:2006

EN60745-2-4:2003+A11:2007

Authorized Signatory

Date: 01.01.2010

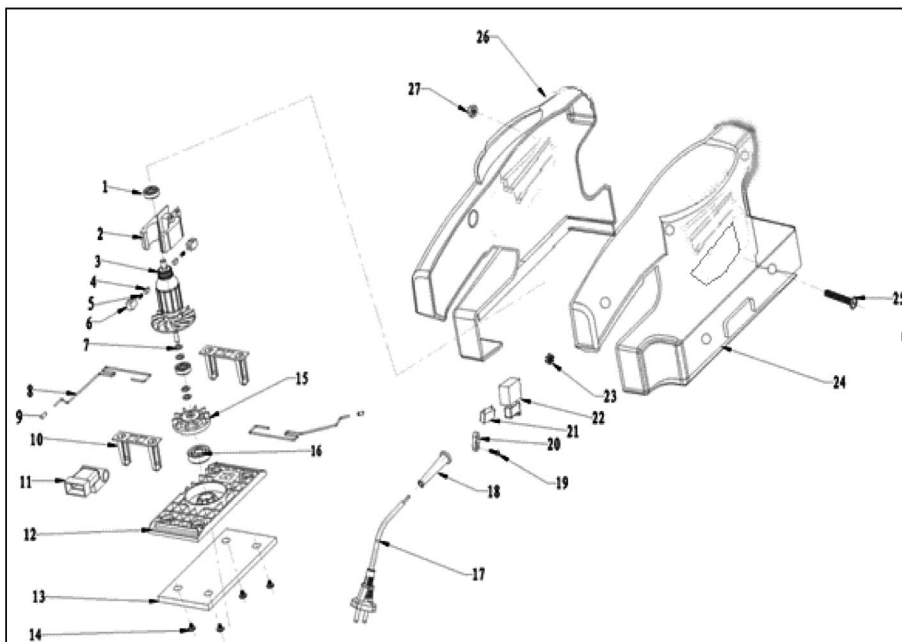
Signature: *Cai Ji Bo*

Name: Cai Jibo

General Manager

SUMEC Hardware & Tools Co.,LTD





No	Description	No	Description
1	Bearing	15	Fan
2	Stator	16	Bearing
3	Rotor	17	Cord plug
4	Brush	18	Cord sleeve
5	Brush spring	19	Screw
6	Brush holder	20	Cord clamp
7	Washer	21	Capacitor
8	Steel wire clamp	22	Switch
9	plastic cover	23	Inductance
10	support	24	Right housing
11	Dust extractor	25	Screw
12	Base plate	26	Left housing
13	Gasket	27	Nut
14	Screw		

135W Orbital Sander

PG135OS

PowerG[®]

Sumec Europe GmbH
Hanns-Martin-Schleyer-Str.18a
47877 Willich, Germany
Helpline: 0844 856 0793