

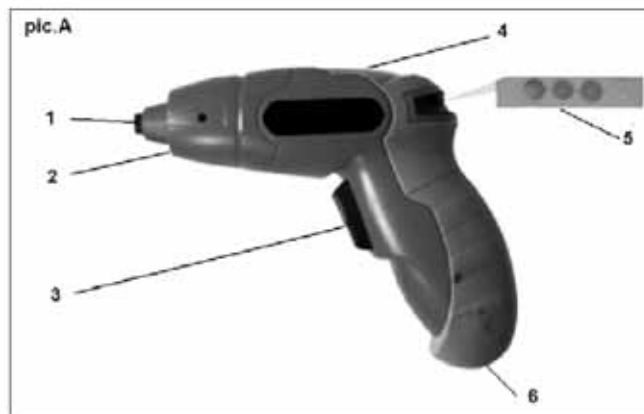
**PowerG®**

**3.6V Cordless Screwdriver  
PG36CSD**



**Manufacturer: SUMEC Hardware & Tools Co., Ltd**  
1# Xinghuo Road, National level Nanjing High-Tech Zone,  
Nanjing 210061 P.R. China





## TECHNICAL DATA

Cordless Screwdriver	PG36CSD
Rated voltage	DC 3.6V
Collet	6.35mm
No-load speed	150 rpm
Max. Torque	2.5Nm
<b>Battery</b>	Li-ion
Battery capacity	1100mAh
Battery charging time	3-5hours
<b>Battery charger</b>	XR-DC060300
Input voltage	220-240VAC 50/60HZ 7W
Output voltage	6VDC 300mA
Weight of charger	0.183 Kg
Sound pressure level	$L_{pA}=56.1$ dB (A)    K=3dB
Power sound level (LwA)	$L_{wA}=67.1$ dB (A)    K=3dB
Vibration	$A_h=0.420$ m/s <sup>2</sup> K=1.5 m/s <sup>2</sup>

## DESCRIPTION OF SYMBOLS



Please read all of the safety and operating instructions carefully before using this tool. Please pay particular attention to all sections of this User Guide that carry warning symbols and notices.

	Observe caution and safety notes!
$n_0$	No-load speed.
V~	Voltage
<b>mA/A/Ah</b>	Milliamps/Amps/Amp-hours
	DC (current and voltage type)
	Drill setting (torque Preselect )
	Protect electrical power tool from moisture!
	Check that the device, mains lead and plug are in good condition!
	Safety class II
	Dispose packaging and appliance in an environmentally friendly way!

## GENERAL SAFETY INSTRUCTIONS



**Read all safety warnings and all instructions.** Failure to follow the warnings and instructions may result in electric shock, fire and/or serious injury.

**Save all warnings and instructions for future reference.**

The "power tool" in this instruction refers to your battery-operated (cordless) power tool.

### **1) Work area safety**

- a) Keep work area clean and well lit.** Cluttered or dark areas invite accidents.
- b) Do not operate power tools in explosive atmospheres, such as in the presence of flammable liquids, gases or dust.** Power tools create sparks which may ignite the dust or fumes.
- c) Keep children and bystanders away while operating a power tool.** Distractions can cause you to lose control.

### **2) Electrical safety**

- a) The charger's plug must match the outlet. Never modify the plug in any way. Do not use any adapter plugs with earthed (grounded) power tools.** Unmodified plugs and matching outlets will reduce risk of electric shock.
- b) Use battery operated tool only with specifically designated battery pack.** Use of any other batteries may create a risk of fire.
- c) Do not expose power tools to rain or wet conditions.** Water entering a power tool will increase the risk of electric shock.
- d) Do not abuse the cord. Never use the cord for carrying, pulling**

or unplugging the power tool. Keep cord away from heat, oil, sharp edges and moving parts. Damaged or entangled cords increase the risk of electric shock.

- e) **A battery operated tool with integral batteries or a separate battery pack must be recharged only with the specified charger for the battery.** A charger that may be suitable for one type of battery may create a risk of fire when used with another battery.

### 3) **Personal safety**

- a) **Stay alert, watch what you are doing and use common sense when operating a power tool. Do not use a power tool while you are tired or under the influence of drugs, alcohol or medication.** A moment of inattention while operating power tools may result in serious personal injury.
- b) **Use personal protective equipment. Always wear eye protection.** Protective equipment such as dust mask, non-skid safety shoes, hard hat, or hearing protection used for appropriate conditions will reduce personal injuries.
- c) **Prevent unintentional starting. Ensure the switch is in the off-position before connecting to power source and/or battery pack, picking up or carrying the tool.** Carrying power tools with your finger on the switch or energizing power tools that have the switch on invites accidents.
- d) **Remove any adjusting key or wrench before turning the power tool on.** A wrench or a key left attached to a rotating part of the power tool may result in personal injury.
- e) **Do not overreach. Keep proper footing and balance at all times.** This enables better control of the power tool in unexpected situations.
- f) **Dress properly. Do not wear loose clothing or jewelry. Keep your hair, clothing and gloves away from moving parts.** Loose

clothes, jewelry or long hair can be caught in moving parts.

- g) If devices are provided for the connection of dust extraction and collection facilities, ensure these are connected and properly used.** Use of dust collection can reduce dust-related hazards.

#### **4) tool use and care**

- a) Do not force the power tool. Use the power tool correctly for your application.** The correct use will do the job better and safer at the rate for which it was designed.
- b) Do not use the power tool if the on/off switch is not working correctly .** Any power tool that cannot be controlled with the switch is dangerous and must be repaired.
- c) Disconnect the plug from the power source and/or the battery pack from the power tool before making any adjustments, changing accessories, or storing power tools.** Such preventive safety measures reduce the risk of starting the power tool accidentally.
- d) Store idle power tools out of the reach of children and do not allow persons unfamiliar with the power tool or these instructions to operate the power tool.** Power tools are dangerous in the hands of untrained users.
- e) Maintain power tools. Check for misalignment or binding of moving parts, breakage of parts and any other condition that may affect the power tool's operation. If damaged, have the power tool repaired before use.** Many accidents are caused by poorly maintained power tools.
- f) Keep cutting tools sharp and clean.** Properly maintained cutting tools with sharp cutting edges are less likely to bind and are easier to control.
- g) Use the power tool, accessories and tool bits etc. in**

accordance with these instructions, taking into account the working conditions and the work to be performed. Use of the power tool for operations different from those intended could result in a hazardous situation.

**5) Battery tool use and care**

**a) Recharge only with the charger specified by the manufacturer.**

A charger that is suitable for one type of battery pack may create a risk of fire when used with another battery pack.

**b) Use power tools only with specifically designated battery packs.**

Use of any other battery packs may create a risk of injury and fire.

**c) When battery pack is not in use, keep it away from other metal objects, like paper clips, coins, keys, nails, screws or other small metal objects, Which can make a connection from one terminal to another. Shorting the battery terminals together may cause burns or a fire.**

**d) Under abusive conditions, liquid may be ejected from the battery; avoid contact. If contact accidentally occurs, flush with water. If liquid contacts eyes, additionally seek medical help. Liquid ejected from the battery may cause irritation or burns.**

**6) Service**

**a) Have your power tool serviced by a qualified repair person using only identical replacement parts. This will ensure that the safety of the power tool is maintained.**



## **ADDITIONAL SAFETY WARNINGS**

### **1) Specific safety rules**

**Do not let comfort or familiarity impair your judgment always adherence to cordless drill safety rules. If you use this power tool unsafely or incorrectly, you can suffer serious personal injury.**

- a) **Hold tool by insulated gripping surfaces when performing an operation where the cutting tool may contact hidden wiring. Contact with a "live" wire will make exposed metal parts of the tool "live" and shock the operator.**
- b) **Be aware that this tool is always in an operating condition, because it does not have to be plugged into an electrical outlet.**
- c) **Always be sure you have a firm footing.**
- d) **Be sure no one is below when using the tool in high locations.**
- e) **Hold the tool firmly .**
- f) **Keep hands away from rotating parts.**
- g) **Do not leave the tool running. Operate the tool only when hand-held.**
- h) **Do not touch the bit or the work piece immediately after operation; they may be extremely hot and could burn your skin.**
- i) **Some material contains chemicals which may be toxic. Take caution to prevent dust inhalation and skin contact. Follow material supplier safety data.**

### **2) Important safety instructions for charger**

- a) **Before using the charger, read all the instructions and cautionary markings on the charger and battery pack as well as the instructions on using the battery pack.**
- b) **Only charge your batteries indoors as the charger is designed for**

indoor use only.

- c) **DANGER.** If the battery pack is cracked or damaged in any other way, do not insert it in the charger. There is a danger of electric shock or electrocution.
- d) **WARNING.** Do not allow any liquid to come into contact with the charger. There is a danger of electric shock.
- e) To allow the battery pack to cool down after charging, do not place it in a hot environment such as a metal shed or open trailer left in the sun.
- f) The charger is not intended for any use other than charging the exact type of rechargeable battery pack as supplied with the charger. Any other use may result in the risk of fire, electric shock or electrocution.
- g) The charger and battery pack supplied with it are specifically designed to work together. Do not attempt to charge the battery pack with any other charger than the one supplied.
- h) Do not place any object on top of the charger as it could cause overheating. Do not place the charger near any heat source.
- i) Do not pull on the plug of the charger to disconnect it from the power source.
- j) Make sure that the charger cable is positioned where it will not be stepped on, tripped over or otherwise subjected to damage or stress.
- k) Do not use an extension cord unless it is absolutely necessary. The use of an improper extension cord could cause the risk of fire, electric shock or electrocution.
- l) Do not use the charger if it has been subjected to a heavy knock, dropped or otherwise damaged in any way. Take the charger to an authorized service centre for a check or repair.
- m) Do not disassemble the charger. Take it to an authorized service centre when service or repair is required. Incorrect re-assembly may

result in the risk of fire, electric shock or electrocution.

- n) To reduce the risk of an electric shock, unplug the charger from the power supply before attempting to clean it. Removing the battery alone does not reduce the risk.
- o) Do not store or use the tool and battery pack in locations where the temperature may reach or exceed 40°C (104°F) such as alongside sheds or metal structures in the summer.
- p) The charger is designed for use from a standard household electrical supply (230V-240V). Do not attempt to connect the charger to a different supply.
- q) If you wish to charge a second battery pack, unplug the charger from the mains supply and leave it for at least 15 minutes. After this time you can charge a second battery pack.

### **3) Important safety instructions for battery pack**

- a) The battery pack for this tool has been shipped in a low charge condition. You should charge the battery pack fully before use.
- b) To ensure the longest battery life and best battery performance, always charge the battery when the air temperature is between 18-24°C (65-75°F). Do not charge the battery pack when the temperature is below 4°C (40°F), or above 40°C (104°F). This is important. Failure to observe this safety rule could cause serious damage to the battery pack.
- c) Do not incinerate the battery pack even if it is seriously damaged or can no longer hold a charge. The battery pack can explode in a fire.
- d) A small leakage of liquid from the battery pack may occur under extreme usage or temperature conditions. This does not necessarily indicate a failure of the battery pack. However, if the outer seal is broken and this leakage comes into contact with your skin:
  - wash the affected area quickly with soap and water.
  - neutralize the liquid with a mild acid such as lemon juice or vinegar.

If the leakage gets in you eyes:

- flush your eyes with clean water for a minimum of 10 minutes and seek immediate medical attention. Inform the medical staff that the liquid is a 25-35% solution of potassium hydroxide.
- e) Never attempt to open the battery pack for any reason. If the plastic housing of the battery pack breaks open or cracks, immediately discontinue its use and do not recharge it.
- f) Do not store or carry a spare battery pack in a pocket or toolbox or any other place where it may come into contact with metal objects. The battery pack may be short circuited causing damaged to the battery pack, burns or a fire.
- g) The battery pack utilizes Li-ion cells. Use an environmentally safe disposal unit at a municipal waste disposal centre to dispose of a damaged or worn out battery, or return it to your dealer.

## **APPLICATION**

### **Intended Use**

The machine is intended for driving in and loosening screws as well as drilling in wood.

### **Check the delivery parts**

Carefully remove the machine from its packaging and check as the following parts are complete:

- Cordless screwdriver
- Battery charger
- 23 pcs bits with 1pc bit holder
- Plastic case
- Operating instruction

If any parts are missing or damaged, please contact with your dealer.

### **Product Features**

The numbering of the product features refers to the illustration of the machine on the graphics page (Pic.A)

1. Collet
2. LED light
3. Forward/Reverse switch
4. LED light switch
5. Battery power indicator
6. Charging port
7. Battery charger

**The accessories illustrated or described are not included as standard delivery.**

### **ASSEMBLY**

#### **Battery Charging**



Only use the battery chargers that are matched to the Li-ion battery of your power tool.

The battery for this tool has been shipped in a low charge condition to prevent possible problems.

Therefore, you should charge the battery fully prior to use.

To charge the battery, follow the steps below:

- 1) Insert the output cord of charger into the charging port. (pic. B )
- 2) Plug the battery charger into the proper AC voltage source. The red light will be lit.
- 3) Let the tool charge initially for 7 hours. After the initial charge, under normal usage, your tool should be fully charged in 3 to 5 hours.
- 4) After charging, unplug the charger from the power source first and



then disconnect the charge cord from the tool. Don't use the tool while it is connected with the charger.

**Note:**

- a) The battery charger is for charging SUMEC battery pack. Never use it for other purposes or for other manufacturer's batteries.
- b) After normal usage, your tool should be fully charged in 3 to 5 hours. If the battery is run down completely, it may take up to 5 hours to become fully charged.
- c) The tool should be recharged when it fails to produce sufficient power on jobs which were easily done previously. Don't continue using tool with its battery in a depleted condition.
- d) To prolong battery life, avoid leaving on charge for extended periods of time(over 30 days without use). Although overcharging is not a safety concern, it can significantly reduce overall battery life.
- e) The battery will reach optimum performance after being recharged 5 times during normal usage. There is no need to run the battery down completely before recharging.
- f) Tool may stall ( if overloaded or improperly used), causing a twist. Always expect the stall. Grip the screwdriver firmly to control the twisting action and prevent loss of control which could cause personal injury. If a stall does occur, release the trigger immediately and determine the reason for the stall before re-starting.

**Install/remove an accessory ( pic.C)**

- a) Hold the screwdriver and install the hex shank accessory into the collet directly.
- b) Hold the screwdriver and remove the hex shank accessory from the collet directly.



**Operation**

### **Switch**

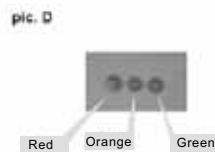
- a) To turn the tool ON in a forward direction, press the bottom section of the rocker switch and the tool will run. Release pressure from the switch and the tool will stop.
- b) To turn the tool ON in a reverse direction, press the top section of the rocker switch. Without depressing rocker switch the tool is locked and will act as any conventional, non-powered screwdriver.

### **LED working light**

The LED light 2 will come on when LED light switch 4 is pushed forwards. This provides additional lighting on the surface of the workpiece for operation in lower-light areas.

### **Battery power indicator** (pic.D)

There are 3 lights on the back top of the screwdriver: green, orange and red lights. Push LED light switch 4 backwards to show the power level.



- a) Green light shows 80% or more power remain;
- b) Orange light shows 40% or more power
- c) Red light shows low power

### **Drilling**

This tool is not recommended for drilling in metal or masonry.

### **Cleaning and Maintenance**



**CAUTION!**

Ensure the forward/reverse switch 3 in the locked condition before carrying out any tasks on the device, e.g. changing tools or maintenance, or before transporting or storing the device. Inadvertent operation of the forward and reverse switch 3 may result in injury.

The cordless Screwdriver is maintenance-free.

- 1) Always keep the device clean, dry and free of oil or grease.
- 2) Clean the device immediately after you have finished using it
- 3) Do not allow any liquids to enter the device. Use a cloth to clean the housing.
- 4) Never use petrol, solvents or cleaning agents that might attack plastic.
- 5) Store the tools, instruction manual and where necessary the accessories in the original packaging. That way you will always have all the information and parts ready to hand.

**Tips for maintaining maximum battery life**

- 1) Charge the battery pack before completely discharged. Always stop tool operation and charge the battery pack when you notice less tool power.
- 2) Never recharge a fully charged battery pack. Over charging shortens the battery service life.
- 3) Charge the battery pack with room temperature at 10°C-40°C (50°F-104°F) let a hot battery pack cool down before charging it.

**Do not dispose of electrical appliances with your domestic waste!**



- 1) The packaging comprises exclusively environmentally-friendly material. Dispose of it in your local recycling containers.
- 2) Take the battery to your nearest authorized service center



or distributor that has been designated as a battery recycling location.

### **Guarantee and Service**

This product is guaranteed for 1 year from the original date of purchase, the guarantee applies to material and production defects. This warranty is not valid without the original dated receipt of purchase.

If the product shows defect as a result of material and production defects during the period of guarantee, providing that the product has been used properly and for the purpose which it has been intended, then faulty products will either be replaced or refunded.

The guarantee does not cover accidental damage or misuse.

This product must be used in accordance with the instructions contained in this manual.

The guarantee will be rendered invalid if the product has been damaged by unauthorised repairs or resold.

Accessories are not covered by the guarantee.

If you have any problems or questions concerning the product, please contact our customer helpline on 0844 856 0793.

## SUMEC

Declaration of Conformity

We,

SUMEC Hardware & Tools Co.,LTD

1# Xinghuo Road, National level Nanjing High-Tech Zone,

Nanjing 210061 P.R. China

Declare that the product

Cordless Screwdriver

Model No. PG36CSD

Complies with the essential safety and health requirement of the following directives:

2006/42/EC

2004/108/EC

2006/95/EC

Standards and technical specification referred to:

EN55014-1:2006

EN55014-2 /A2:2008

EN61000-6-3:2007

EN60745-1:2009

EN60745-2-2/ A12:2009

Authorized Signatory

Date: 01.01.2010

Signature:

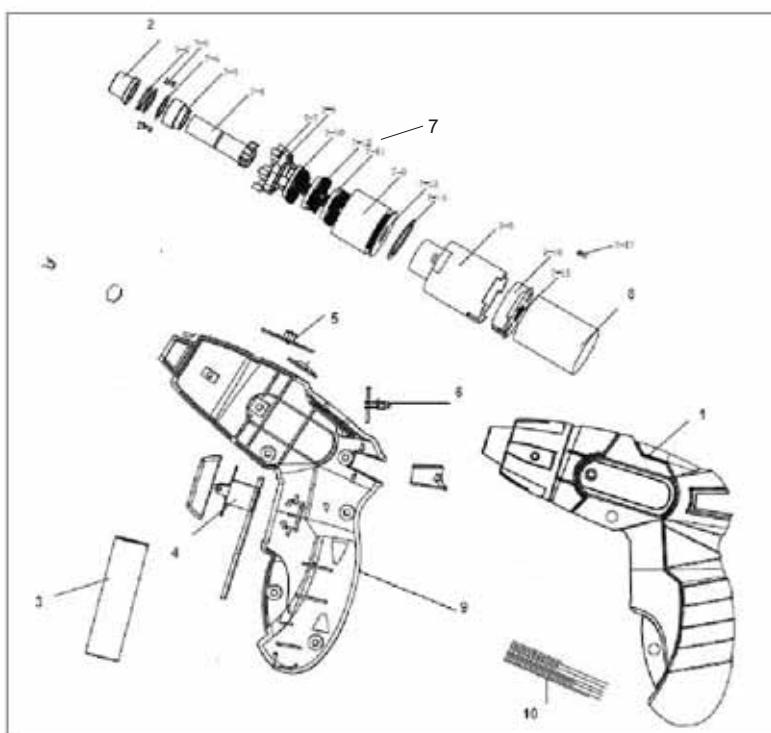
*Cai Ji Bo*

Name: Cai Jibo

General Manager

SUMEC Hardware & Tools Co.,LTD





Ref.	Description	Ref.	Description
1	Left housing	6	Power indicator
2	Axis sleeve	7	Gear box
3	Li-ion battery	8	Motor
4	Forward/ Reverse switch	9	Right housing
5	LED working light	10	Diode

***3.6V Cordless Screwdriver***

***PG36CSD***

***PowerG***<sup>®</sup>

Sumec Europe GmbH  
Hanns-Martin-Schleyer-Str.18a  
47877 Willich, Germany  
Helpline: 0844 856 0793