



User Manual

Great care has gone into the manufacture of this product and it should therefore provide you with years of good service when used properly. In the event of product failure within its intended use over the course of the first 3 years after date of purchase, we will remedy the problem as quickly as possible once it has been brought to our attention. In the unlikely event of such an occurrence, or if you require any information about the product, please contact us via our helpline support services, details of which are to be found both in this manual and on the product itself.



PRODUCED IN CHINA FOR:
ALDI STORES LTD. PO BOX 26, ATHERSTONE
WARWICKSHIRE, CV9 2SH.

ALDI STORES (IRELAND) LTD.
PO BOX 726, NAAS, CO. KILDARE.
Visit us at www.aldi.com

AFTER SALES SUPPORT

800103

 **GB** +44(0) 1904727501 **IE** +353(0) 019022605

 support@coreservice.co.uk

MODEL:
GRHS20A

04/2020

3
YEAR
WARRANTY

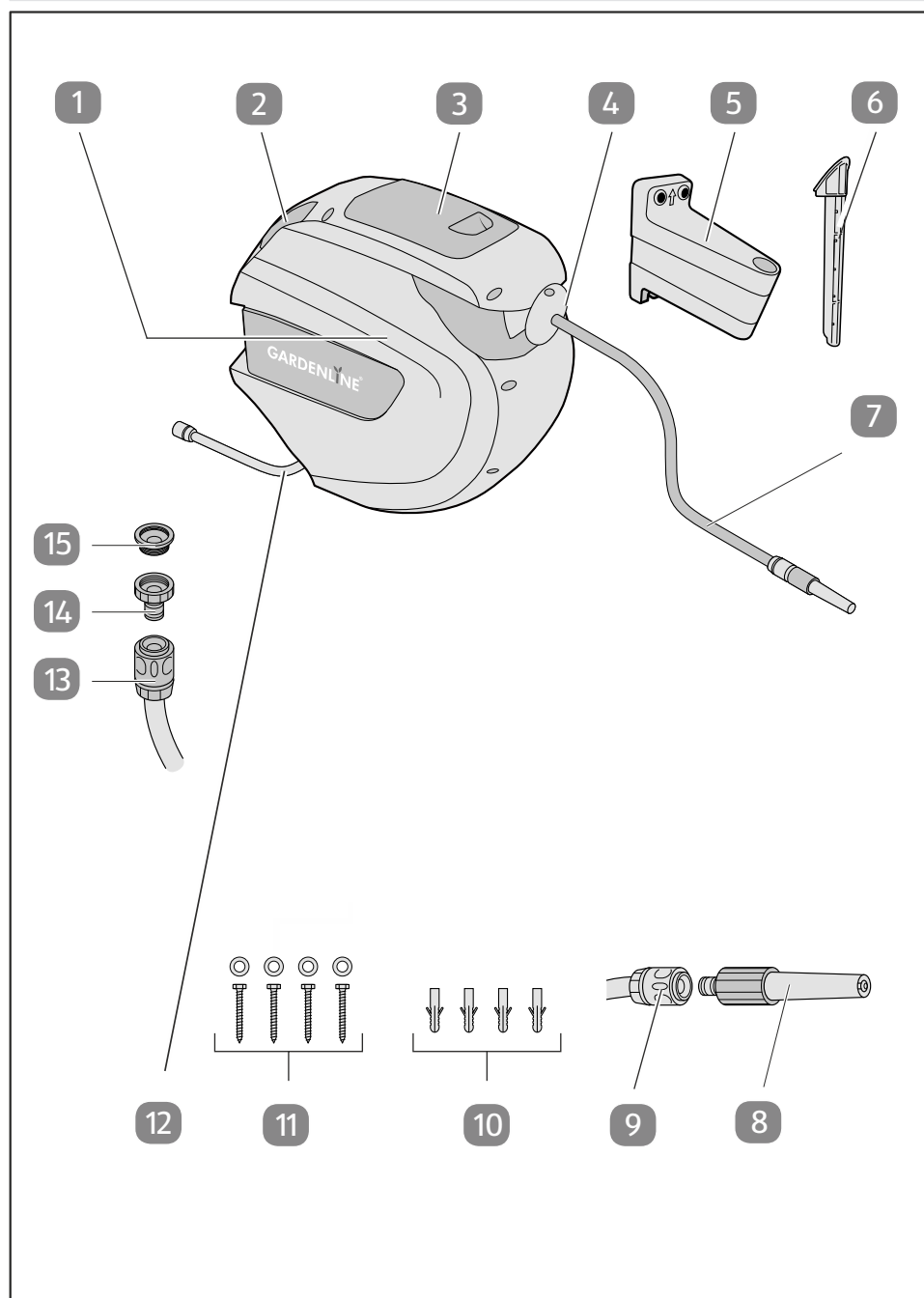
GARDENLINE

HOSE REEL



Original User Manual

Overview



Scope of delivery/product components

- 1 Hose box housing
- 2 Carry handle on housing
- 3 Flap
- 4 Hose stopper
- 5 Wall mount
- 6 Mounting bolts for hose box
- 7 Garden hose
- 8 Spray nozzle
- 9 Coupling for garden hose with water stop
- 10 Dowels
- 11 Fixing screws with washers for mount
- 12 Feed hose
- 13 Feed hose coupling
- 14 Tap connection
- 15 1" to ¾" reducer



Table of content

Overview	2
Scope of delivery/product components	3
General information	6
Reading and storing the operating manual.....	6
Proper use.....	6
Explanation of symbols.....	6
Safety	7
Safety notes.....	7
Functional description	9
Before first use	10
Check the device and scope of delivery.....	10
Assembly instruction.....	10
Operation	15
Locking / unlocking outlet hose.....	15
Adjusting water jet.....	16
Using wall-mounted hose box.....	16
Cleaning and maintenance	17
Storage	17
Troubleshooting	17
Repair Service.....	18
Technical data	18
Disposal	19
Disposing of packaging.....	19
Product disposal.....	19
Declaration of conformity	20

General information

Reading and storing the operating manual



This operating manual is a part of the Wall-mounted Hose Box (hereinafter called "product"). It contains important information on how to set up and use the product.

Read the user manual carefully, in particular the safety instructions, before using the product. Failure to follow this user manual may lead to severe injuries or product damage.

This user manual is based on the standards and regulations that are valid within the European Union. Outside the EU, please also note the country-specific directives and laws.

Keep this user manual for future reference. If you pass this product on to a third party, you must also supply this user manual.

Proper use

Wall-mounted Hose Box was exclusively designed as a hose drum in an enclosed hose box with a reeling mechanism and a connection to the building's water supply. Other systems that are operated with water (e.g. such as lawn sprinklers, irrigation systems and high-pressure cleaners) can also be connected to the Wall-mounted Hose Box.

The plastic dowels are designed for concrete walls.

The product is intended for private use only and is not suitable for commercial use. Use the product only as described in this operating manual. Any other use is improper and may lead to product damage or even personal injury. This product is not a toy.

The manufacturer or retailer assumes no liability for damage caused by improper or incorrect use.

Explanation of symbols

The following symbols are used in this operating manual, on the product or on the packaging.



This symbol provides you with useful additional information on handling and use.



Read the operating manual.



Do not direct the water jet towards electrical equipment!



Do not direct the water jet towards persons or animals!



Do not deliver drink water.



Declaration of conformity (see chapter “Declaration of conformity”):
Products marked with this symbol meet all the applicable Community regulations of the European Economic Area.

Safety

The following signal words are used in this operating manual.

▲ WARNING!

This signal symbol/word denotes a hazard with an average risk level that could lead to death or severe injury if it is not avoided.

▲ CAUTION!

This signal symbol/word denotes a hazard with a low risk level that could lead to mild or moderate injury if it is not avoided.

NOTE!

This signal word provides a warning about potential material damage.

Safety notes

General safety instructions

- Keep the product out of the hands of children.
- This product must not be used by children.
- Never leave children unsupervised with the packaging materials. Danger of suffocation.

Safety

- Make sure that no water pipes are damaged during installation of the product. Observe the operating instructions for your safety.
- Ensure that all parts are undamaged and have been assembled appropriately. Risk of injury exists if assembled incorrectly. Damaged parts can effect safety and function.
- Have the installation done by experienced persons only.
- Do not open the housing. The springs are preset; they may spring back.
- Never remove any screws from parts of the housing.
- Never let the hose spring back by itself. Guide it carefully back into the housing.
- Never let go of the hose if the automatic stop function is not engaged.
- Never allow the hose to retract freely. This could result in damage to the product.
- Never block the hose end with your fingers or other objects during use.
- To avoid frost damage, remove the hose reel from the wall and store it dry during winter.
- Ensure that the ground near the hose reel is kept as dry as possible.
- Turn the tap into the off position when the hose reel is not in use.
- The hose is not suitable for delivering drinking water.
- Do not direct the water jet towards electrical equipment!
- Do not direct the water jet towards persons or animals!

▲ WARNING!**Risk of injury!**

Faulty operation due to improper handling may cause injuries. This poses a risk to children and persons with reduced physical, sensory or mental abilities (such as partially disabled or older persons with restricted physical and mental abilities) or a lack of experience and knowledge (such as older children).

- Children aged 8 years and older as well as persons with reduced physical, sensory or mental abilities or a lack of experience and knowledge may only use the product if they are supervised or have been given instruction on using the product in a safe way and understand the hazards involved.
- Children under the age of 8 must not use the product.
- Children must not play with the product or the connection cable.
- Cleaning or user maintenance must not be undertaken by children unless supervised.
- Do not leave the product unattended when in use.
- Do not let children play with the packaging film. They may become tangled when playing and suffocate.

Functional description

The wall-mounted hose box is equipped with the heavy duty spring-loaded mechanism to provide automatic slow rewinding and lock hose anywhere, and the guide to prevent the hose from overlapping, knot and tangle.

The wall-mounted bracket allows the hose box to pivot 180° so the hose follows your direction as you water. Included 20m hose makes watering easy and convenient in your garden to save your time. When you are finished watering, simply pull the hose and the reel automatically draws it back into the weather-resistant plastic housing.

Unit easily removes for storage indoors in winter season.

Before first use

Check the device and scope of delivery

NOTE!

Risk of damage!

If opening the packaging with a sharp knife or other pointed object, be careful to avoid damaging the product's surface.

- Proceed carefully with opening the packaging.
- 1. With both hands, lift the product out of the packaging.
- 2. Check that the delivery is complete (see chapter "Scope of delivery/device components").
- 3. Inspect the product and individual parts for damage. Do not operate a damaged product, instead contact the manufacturer via the service centre listed on the warranty card.

Assembly instruction

⚠ WARNING!

Danger of injury and suffocation!

Children or persons with disabilities may be injured if they install the product.

- Do not let children or persons with disabilities perform the installation.
- Keep children away from the installation site during installation.
- Keep small parts and packaging materials away from children. Children may swallow them and suffocate.

⚠ WARNING!**Danger of electric shock, short circuit and material damage**

Power lines, water and gas pipes or other lines/pipes in the wall may become damaged during the installation and lead to hazards or damage to the environment.

- Make sure that you do not damage hidden pipes/lines during the installation. Use suitable line/pipe detectors for this purpose.

⚠ CAUTION!**Risk of injury!**

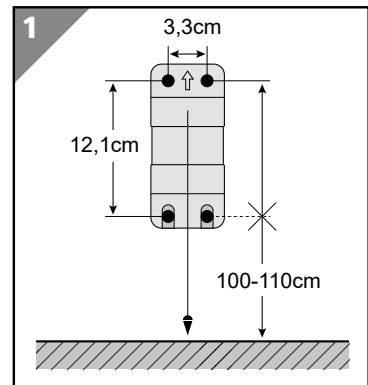
If you do not precisely follow these assembly instructions, mistakes may happen and lead to injuries.

- Only use the stated tools for the installation.
- Wear protective goggles when working with power tools and always follow the manufacturer's instructions.
- If you are not certain, have an experienced expert install the product.

Mounting wallmounted bracket

The supplied plastic plugs are suitable for cement walls (plaster up to 1cm). For other wall types, special plugs must be used.

1. Mark 4 holes position on the wall using the wall mount bracket **5**, drill holes into the wall 50mm depth with an Ø10mm percussion drill. 100 - 110 cm height of lower holes is recommended.

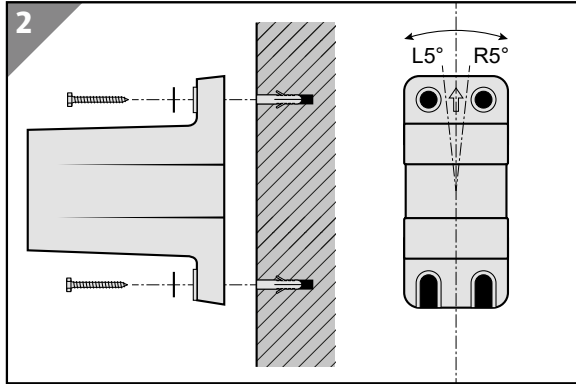


Before first use



Higher than 110cm will possible effect the auto rewind function.

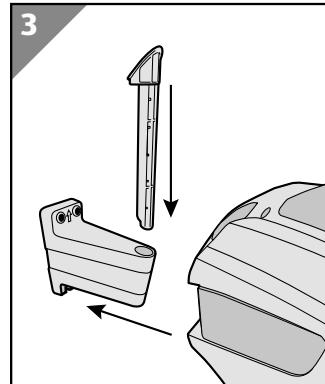
2. Stick in the plastic plugs **10** to the end.
3. Screw and secure the wall-mounted bracket with the included mount hardware (4 sets of screw, washer and plastic plug) on the wall. Make the central line of bracket as vertical as possible, within 5°left/right is recommended to guarantee 180°smooth swivel.



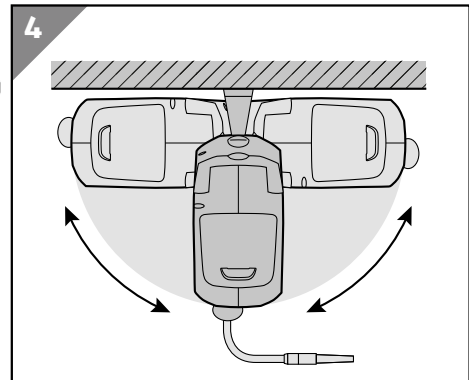
4. Assemble the hose box main body (See “Assembling hosebox main body”) and check the pivot rotation left / right. Small adjustment of bracket if necessary.

Assembling hose box main body

1. Pull and remove the hose box fixing bar **6** from hose box, and hold it.
2. Carry the main body carrying handle **2** and insert it into the wall mount bracket **5**.
3. Align the assembly holes on hose box and bracket, insert the hose box fixing bar (3) to secure the hose box main body **1**.

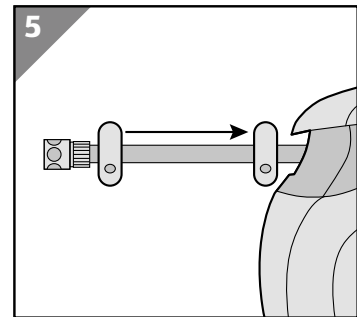


4. Swivel the hose box main body **1** left and right to check the smoothness, make sure the hose box main body **1** can stay any position.
5. Pull and return the outlet hose to check the function of automatic slow rewinding, hose locking and guiding.



Shifting hose stopper

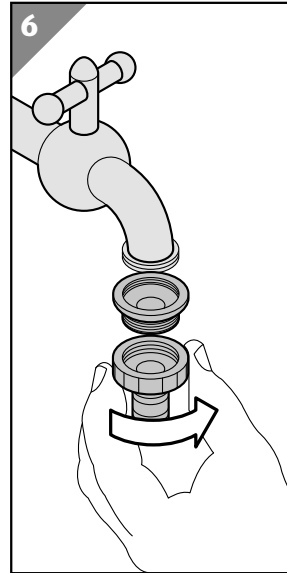
1. Loosen the 2 crosshead screws on hose stopper **4** with a screwdriver
2. Hold the outlet hose **7** securely and shift the stopper **4** to desired position, screw tightly again with the 2 crosshead screws.



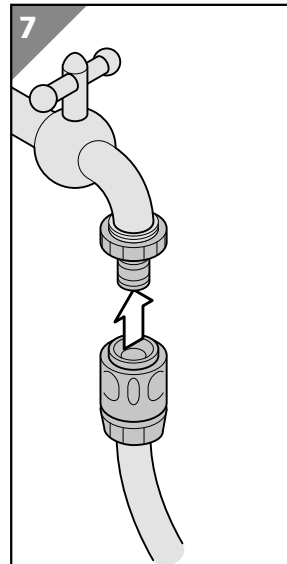
Before first use

Connecting / disconnecting the tap water

1. Screw the faucet coupling **14** to faucet.



2. Insert the inlet hose male coupling **13** into the faucet coupling **14** with audible “click” to secure.



1. Pull back the sleeve of inlet hose male coupling **13** to disconnect the water connection.

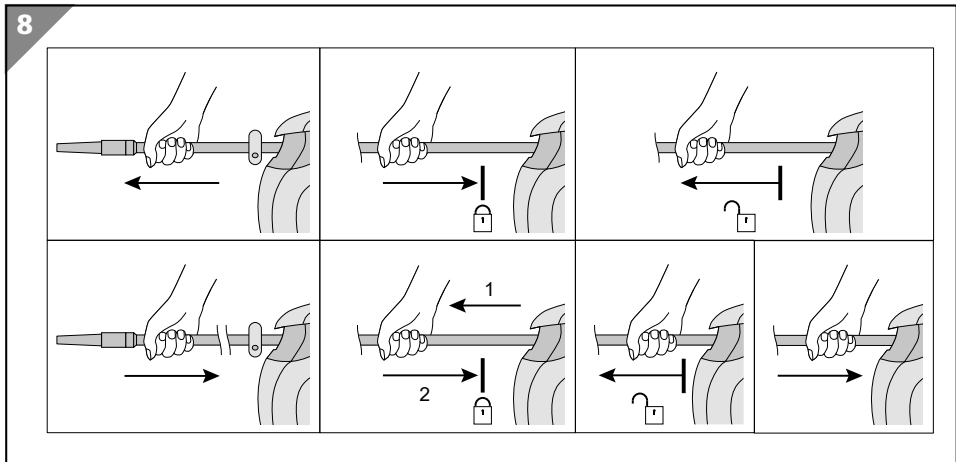
Operation

NOTE!

Risk of damage!

- Always hold the hose tight when winding it up.
- Do not use the hose box in frosty weather.

Locking / unlocking outlet hose



During unwinding

1. Hold the outlet hose **7** securely and pull the outlet hose out to desired length.
2. Stop pulling and allow the outlet hose **7** return slowly to lock. If not, pull out the outlet hose a short tug (10cm at the beginning and 5cm at the end) again and allow the outlet hose **7** return to lock.
3. Pull out the outlet hose a short tug (10cm at the beginning and 5cm at the end) to unlock.



The lock and unlock alternates on the whole length, you can repeat above actions to engage lock and unlock function alternatively.

During rolling up

1. Stop rolling up at desired length and pull out the outlet hose a short tug (10cm at the beginning and 5cm at the end).

Operation

2. Allow the outlet hose **7** return slowly to lock. If not, pull out the outlet hose a short tug (10cm at the beginning and 5cm at the end) again and allow the outlet hose **7** return to lock
3. Pull out the outlet hose a short tug (10cm at the beginning and 5cm at the end) to unlock.



The lock and unlock alternates on the whole length, you can repeat above actions to engage lock and unlock function alternatively.

Adjusting water jet

1. Use one hand to hold the jet holder **8**.
2. Use another hand
 - a. to turn the jet adjustment bar clockwise to reduce the water spray from line to splash, to the end to stop the water spray.
 - b. to turn the jet adjustment bar counter-clockwise to enlarge the water spray from splash to line, to the end to the maximum water spray.

Using wall-mounted hose box

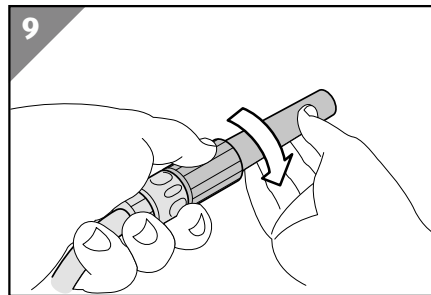


The built-in automatic hose guide is preventing the hose from overlapping while rolling up. Do not use hand to settle the hose coil.



There is a water stopper inside the outlet hose male coupling, help change the nozzle with the tap water on.

1. Turn the nozzle adjustment bar clockwise to the end to stop the water spray.
2. Turn on the tap water.
3. Turn the hose box main body **1** to working direction, hold the outlet hose **7** securely and pull the outlet hose out to unwind to desired length.
4. Lock the outlet hose **7** and turn the nozzle adjustment bar counter-clockwise to start the water spray. Always use one hand to hold the nozzle holder **8** when watering.
5. Hold the outlet hose **7** securely, unlock the outlet hose **7** to unwind or roll up it to adjust the hose length. It's recommended to turn the nozzle adjustment bar clockwise to the end to stop the water spray before hose length adjustment.
6. After watering, turn the nozzle adjustment bar clockwise to the end to stop the water spray, hold the outlet hose **7** securely to roll up slowly to the hose



stopper **4**. If certain length left outside the hose box main body **1**, pull out the outlet hose **7** by 1-2m and roll up again. Do not push the hose back into the hose box main body **1**.

7. Turn off the tap water and rotate the hose box main body **1** against the wall.

Cleaning and maintenance

Any work that is not described in these Instructions must be carried out by a servicing agency authorized by us.

- Always keep the hose box main body **1** clean. Do not use cleaning agents and solvents.
- Always turn off the tap water when the wallmounted hose box is not in use
- Use the water spray to clean the hose box main body **1**. Do not immerse the wall-mounted hose box in water.
- Remove the hose box main body **1** indoors in a frost period (See “Storage”).
- Check the inlet hose **12** and outlet hose **7** carefully. Do not use the hose box if any cut on them.
- Check the seal O-ring on nozzle holder **8** and faucet coupling **14**.
- Regularly check and clean the inside through the flap **3**.
- Contact our service center if any problem.

Storage

1. Carefully clean the hose box main body **1** and its accessories.
2. Turn off the tap water and remove the inlet hose male coupling **13** from the faucet coupling **14**.
3. Use one hand to grip the main body carrying handle **2** and another hand to pull out the hose box fixing bar **6**.
4. Remove the hose box main body **1** from wall-mounted bracket **5** and insert the hose box fixing bar **6** back.
5. Carry the hose box main body **1** indoors for storage.

Troubleshooting

Problem	Possible cause	Remedy
Lock / unlock defect	different turn	Repeat the action (See “locking / unlocking outlet hose”).

Troubleshooting

No water spray	tap water closed	Turn the nozzle
	Water nozzle closed	Turn the nozzle adjustment bar 8 counter-clockwise.
	Kink or similar blockage of rolled up in the box hose.	Pull out the outlet hose by 2m or more and let hose roll up again.
Water leakage	O-ring missing or damaged	Replace the O-ring.

If the problem persists, contact the customer service listed on the last page.

Repair Service

For a charge, repairs not covered by the guarantee can be carried out by our service branch, which will be happy to issue a cost estimate for you. We can handle only equipment that has been sent with adequate packaging and postage.

Attention: Please send your equipment to our service branch in clean condition and with an indication of the defect. Equipment sent carriage forward or by bulky goods, express or other special freight will not be accepted. We will dispose of your defective devices free of charge when you send them to us.

Technical data

Model:	GRHS20A
Item number:	800103
Working pressure	10 bar
Maximum pressure	30 bar
Hose length	20 m
Connecting hose	2 m
Hose diameter	½" (1.27 cm)
Hose thickness	2.15 mm
Operating temperature	5°C - 45°C
Connection	1" or ¾" (with adapter)
Hose material	Cross-woven PVC fabric, 3-layered, thickness 550 DTEX, UV resistant
Housing and wall mount material	PP/fibreglass
Dimensions of housing including wall mount (WxHxD)	39,5 cm x 18,5 cm x 34 cm
Weight	7,3 kg

Accessories

Connector with water stop	½" (1.27 cm), (PP+ABS)
Connection without water stop	½" (1.27 cm), (PP+ABS)
Adjustable tip	½" (1.27 cm), (PP+ABS)
Tap connector	1" to ¾", (PP)

Disposal

Disposing of packaging



Dispose of packaging according to type. Sort the paperboard and cardboard as waste paper and the film as recyclable material.

Product disposal

Dispose of the product in line with the guidelines and disposal regulations applicable in your country.

Declaration of conformity

Declaration of conformity

Original EU Declaration of Conformity

We,

MEROTEC GmbH
Otto-Brenner-Str. 8, D-47877 Willich, Germany

herewith declare under our own, sole responsibility that our product

Hose reel
Model-No. GRHS20A

complies with the following directives:

2006/42/EC Machinery Directive

Applied harmonized standards:
EN ISO 12100:2010

Document representative:
Dirk Wohlrab
MEROTEC GmbH
Otto-Brenner-Str. 8
D-47877 Willich



Place, date: Willich, 17.12.2019
Authorised Signature:

A handwritten signature in black ink that reads "Ronald Menken".

Ronald Menken
General Manager
MEROTEC GmbH