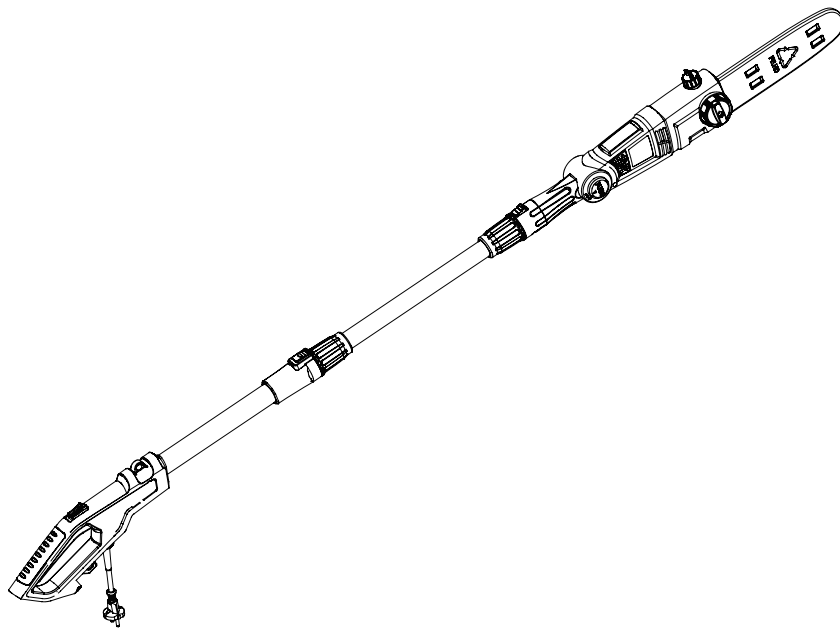


GB

750W ELECTRIC POLE SAW

Original Instructions



+44(0)1904 727513



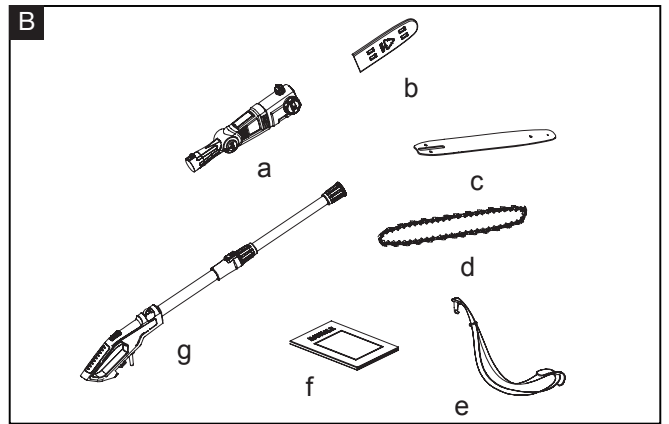
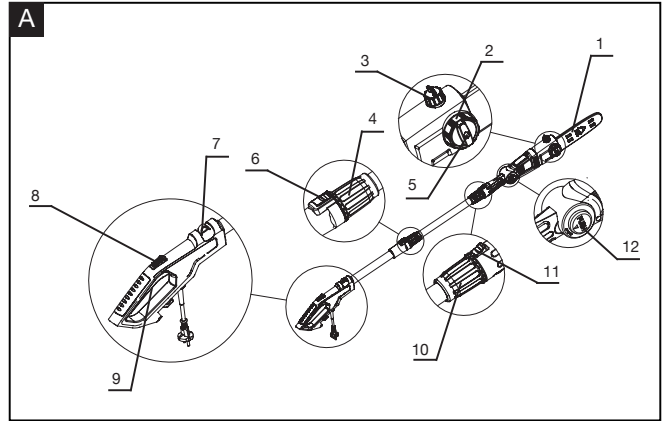
support@yardforce.co.uk

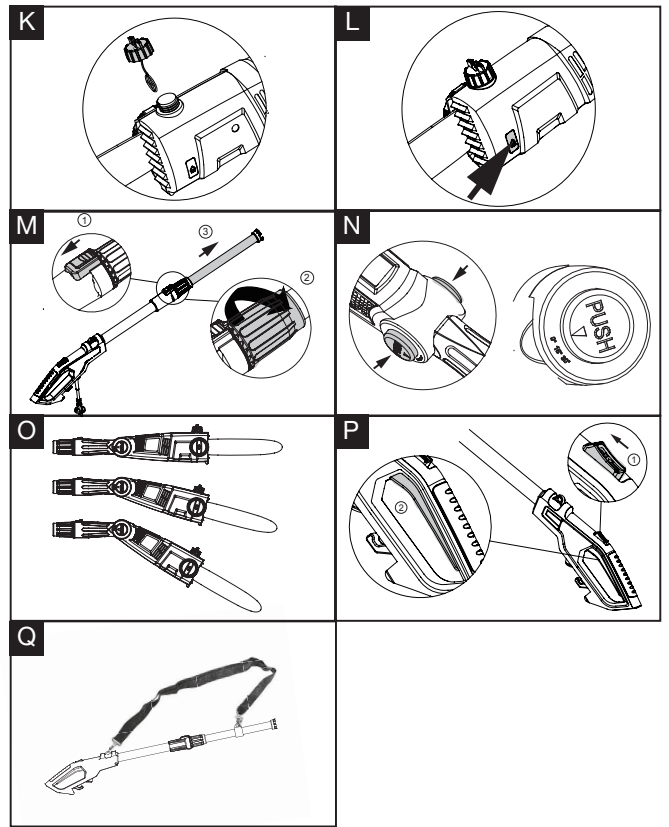
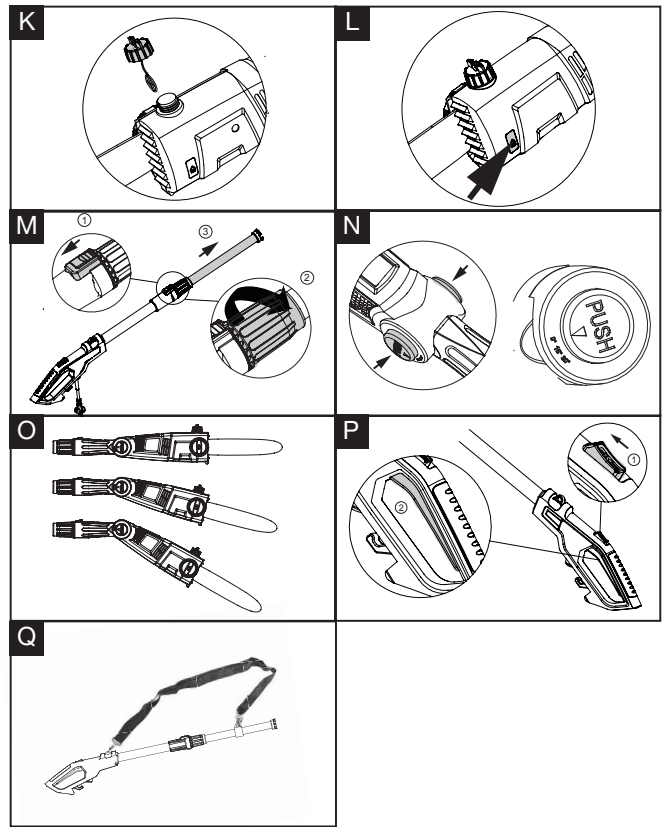
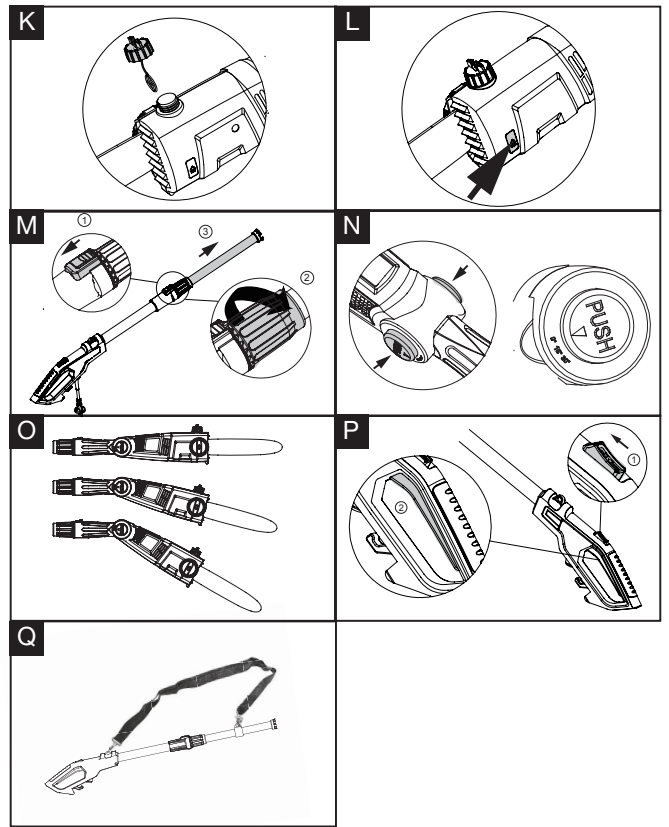
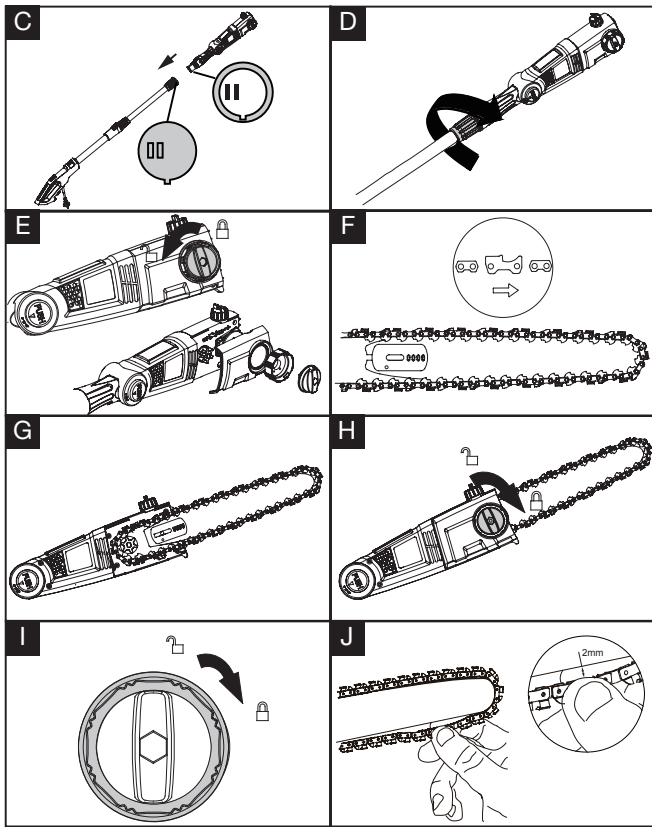
www.yardforce.eu





Read this manual carefully prior to assembling and operating the Pole saw. It is dangerous to operate this product without being familiar with these instructions. Keep this manual in a safe place and have it ready for future reference.





YARD FORCE

ES N20 Original Instructions

CONTENT

Intended use	07
General safety warnings	07
Product safety warnings	11
Symbols	18
Technical data	22
Description of product	23
Operation	26
Maintenance and storage	29
Troubleshooting	31
Warranty	32
CE declaration	33

INTENDED USE

A Pole saw with telescopic arm, which is intended for pruning and removing branches from trees. It is not suitable for extensive sawing work and felling trees or for the sawing of materials other than wood. Please observe that our machine was not designed for use in commercial, technical or industrial applications. We assume no liability if the machine is used in commercial, technical or industrial applications or for equivalent activities.

GENERAL SAFETY WARNINGS



WARNING!

Read all safety warnings and all instructions. Failure to follow the warnings and instructions may result in electric shock, fire and/or serious injury. Save all warnings and instructions for future reference. The term “power tool” in the warnings refers to your mains-operated (corded) power tool or battery-operated (cordless) power tool.

Work area safety

1. Keep work area clean and well lit. Cluttered or dark areas invite accidents.
2. Do not operate power tools in explosive atmospheres, such as in the presence of flammable liquids, gases or dust. Power tools create sparks, which may ignite the dust or fumes.
3. Keep children and bystanders away while operating a power tool. Distractions can cause you to lose control.

Electrical safety

1. Power tool plugs must match the outlet. Never modify the plug in any way. Do not use any adapter plugs with earthed (grounded) power tools. Unmodified plugs and matching outlets will reduce risk of electric shock.

GENERAL SAFETY WARNINGS

2. Avoid body contact with earthed or grounded surfaces, such as pipes, radiators, and refrigerators. There is an increased risk of electric shock if your body is earthed or grounded.
3. Do not expose power tools to rain or wet conditions. Water entering a power tool will increase the risk of electric shock.
4. Do not abuse the cord. Never use the cord for carrying, pulling or unplugging the power tool. Keep the cord away from heat, oil, sharp edges or moving parts. Damaged or entangled cords increase the risk of electric shock.
5. When operating a power tool outdoors, use an extension cord suitable for outdoor use. Use of a cord suitable for outdoor use reduces the risk of electric shock.
6. If operating a power tool in a damp location is unavoidable, use a residual current device (RCD) protected supply. Use of an RCD reduces the risk of electric shock.

NOTE: The term “residual current device (RCD)” may be replaced by the term “ground fault circuit interrupter (GFCI)” or “earth leakage circuit breaker (ELCB)”

Personal safety

1. Stay alert, watch what you are doing and use common sense when operating a power tool. Do not use a power tool while you are tired or under the influence of drugs, alcohol or medication. A moment of inattention while operating power tools may result in serious personal injury.
2. Use personal protective equipment. Always wear eye

GENERAL SAFETY WARNINGS

- protection. Protective equipment such as dust mask, non-skid safety shoes, hard hats, or hearing protection used for appropriate conditions will reduce personal injuries.
3. Prevent unintentional starting. Ensure the switch is in the off-position before connecting to a power source and/or battery pack, picking up or carrying the tool. Carrying power tools with your finger on the switch or energising power tools that have the switch on invites accidents.
 4. Remove any adjusting key or wrench before turning the power tool on. A wrench or a key left attached to a rotating part of the power tool may result in personal injury.
 5. Do not overreach. Keep proper footing and balance at all times. This enables better control of the power tool in unexpected situations.
 6. Dress properly. Do not wear loose clothing or jewellery. Keep your hair, clothing and gloves away from moving parts. Loose clothes, jewellery or long hair can be caught in moving parts.
 7. If devices are provided for the connection of dust extraction and collection facilities, ensure these are connected and properly used. Use of dust collection can reduce dust-related hazards.

Power tool use and care

1. Do not force the power tool. Use the correct power tool for your application. The correct power tool will do the job better and safer at the rate for which it was designed.
2. Do not use the power tool if the switch does not turn it on and off. Any power tool that cannot be controlled with the switch is dangerous and must be repaired.

GENERAL SAFETY WARNINGS

3. Disconnect the plug from the power source and/or the battery pack from the power tool before making any adjustments, changing accessories, or storing power tools. Such preventive safety measures reduce the risk of starting the power tool accidentally.
4. Store idle power tools out of the reach of children and do not allow persons unfamiliar with the power tool or these instructions to operate the power tool. Power tools are dangerous in the hands of untrained users.
5. Maintain power tools. Check for misalignment or binding of moving parts, breakage of parts and any other condition that may affect the power tool's operation. If damaged, have the power tool repaired before use. Many accidents are caused by poorly maintained power tools.
6. Keep cutting tools sharp and clean. Properly maintained cutting tools with sharp cutting edges are less likely to bind and are easier to control.
7. Use the power tool, accessories and tool bits etc. in accordance with these instructions, taking into account the working conditions and the work to be performed. Use of the power tool for operations different from those intended could result in a hazardous situation.

Service

Have your power tool serviced by a qualified technician using only identical replacement parts. This will ensure that the safety of the power tool is maintained.

PRODUCT SAFETY WARNINGS

SPECIAL SAFETY INSTRUCTIONS FOR MOUNTED POWERED POLE SAW

1. Keep all parts of the body away from the saw chain when the chainsaw is operating. Before you start the chainsaw, make sure the saw chain is not contacting anything. A moment of inattention while operating chainsaw may cause entanglement of your clothing or body with the saw chain.
2. Do not use the machine when the operator is tired, ill or under the influence of alcohol or other drugs. Always disconnect the mains plug before performing any maintenance work, when the chainsaw is not in use and before changing any tools.
3. Hold the saw firmly with both hands, with fingers and thumbs hooked around the handles. Steady yourself with your body and arms in a position in which you can control the kickback forces. Provided appropriate measures are taken, an operator should be capable of controlling the kickback forces. Never let go of the chainsaw.
4. Always hold the chainsaw with your right hand on the rear handle and your left hand on the front handle. Holding the chainsaw with a reversed hand configuration increases the risk of personal injury and should never be done.
5. Hold the tool by insulated gripping surfaces only, because the saw chain may contact hidden wiring or its own cord. Saw chains contacting a "live" wire may make exposed metal parts of the tool "live" and could give the operator an electric shock.
6. Wear safety glasses and hearing protection. Further protective equipment for head, hands, legs and feet is

PRODUCT SAFETY WARNINGS

recommended. Adequate protective clothing will reduce personal injury by flying debris or accidental contact with the saw chain.

7. Do not use the chainsaw while up a tree unless you are specially trained to do this. Otherwise you risk injuring yourself if you use the chainsaw inappropriately whilst up a tree.

8. Always keep proper footing and operate the chainsaw only when standing on fixed, secure and level surface. Slippery or unstable surfaces such as ladders may cause a loss of balance or control of the chainsaw.

9. When cutting a branch that is under tension be alert for spring back. When the tension in the wood fibres is released the spring loaded branch may strike the operator and/or throw the chainsaw out of control.

10. Use extreme caution when cutting branches and saplings. The slender material may catch the saw chain and be whipped toward you or pull you off balance.

11. Carry the chainsaw by the front handle with the chainsaw switched off and away from your body. When transporting or storing the chainsaw always fit the guide bar cover. Proper handling of the chainsaw will reduce the likelihood of accidental contact with the moving saw chain.

12. Follow instructions for lubricating, chain tensioning and changing accessories. An improperly tensioned or lubricated chain may either break or increase the chance for kickback.

13. Keep handles dry, clean, and free from oil and grease. Greasy, oily handles are slippery causing loss of control.

PRODUCT SAFETY WARNINGS

14. Cut wood only. Do not use chainsaw for purposes not intended. For example: do not use chainsaw for cutting plastic, masonry or non-wood building materials. Use of the chainsaw for operations different than intended could result in a hazardous situation.

15. Follow the manufacturer's instructions for operation, sharpening and maintaining the saw chain. The risk of kickback is increased if the depth limiter is set too low.

a. Take special care when cutting undergrowth and young trees. The thin material can become caught in the saw chain and whip back towards you or make you lose your balance.

b. Do not cut into the ground, metal fences or similar unsuitable items and materials.

c. We recommend that people who are using a chainsaw for the first time should arrange for a well-versed person to instruct them on how to work with a chainsaw and the safety equipment, for example in the form of practical exercises (cutting wood on a sawing trestle, etc.).

d. Keep your working area free of obstacles and ensure that you have adequate freedom of movement. Do not work in constricted areas in which you could continuously get too close to the operating saw chain.

e. Keep your working area tidy and free of off-cuts and other obstacles over which you could stumble.

f. Ensure that you maintain a steady foothold. Only use the chainsaw on flat surfaces where you have a firm footing. Never work on ladders or on slippery surfaces on which you could lose your balance or otherwise lose control of the chainsaw.

PRODUCT SAFETY WARNINGS

- g. Saw small round timber only on a sawing trestle in order to secure it from rolling away.
- h. Before you start felling branches: Make sure that there is nobody within a range of at least 2-2.5 times the length of the branch.
- i. Take the weather conditions into account when felling trees. Do not fell trees in strong or gusting wind. Do not fell trees in frosty conditions or on frozen, icy ground. Do not fell trees in rain or if visibility is poor.
- j. Never allow children or people unfamiliar with these instructions to use the machine.
- k. Always hold the chainsaw with your right hand on the rear handle and your left hand on the front handle. Holding the chainsaw with your hands in the wrong positions increases the risk of injury and must therefore be avoided.
- l. Wear safety goggles and ear protection. Other safety equipment for the head, hands, legs and feet is recommended. Correct safety equipment reduces the risk of injury caused by catapulted foreign bodies or in the event of accidental contact with the chainsaw.
- m. Always maintain a steady standing position and only work with the chainsaw if you are standing on a solid, safe and flat surface. Slippery or unsafe surfaces such as ladders can cause you to lose your balance or control over the chainsaw.
- n. Plan an escape route from falling trees or branches in advance. Make sure that this escape route is free of obstacles which could restrict or prevent free movement. Keep in mind that freshly cut grass or bark is slippery.
- o. Ensure that somebody is in the vicinity (but at a safe

PRODUCT SAFETY WARNINGS

- distance) in case of an accident.
- p. When the chain is moving, do not let the tip of the chain bar come into contact with any objects.
- q. Start sawing only after the chain has reached full speed.
- r. Never try to target a previous cut. Always start a new cut.
- s. Watch out for moving branches or other forces which could interfere with a cut and impact with the chain.
- t. Never try to cut a branch with a larger diameter than the cutting length of the equipment.
- u. Keep the equipment at a minimum distance from overhead power cables.
- v. National regulations can restrict the use of the pole saw.

Causes and operator prevention of kickback:

1. Kickback may occur when the nose or tip of the guide bar touches an object, or when the wood closes in and pinches the saw chain in the cut.
2. If the tip of the guide bar makes contact with an object, it may cause a sudden reverse reaction, kicking the guide bar up and back towards the operator.
3. Pinching the saw chain along the top of the guide bar may push the guide bar rapidly back towards the operator.
4. Either of these reactions may cause you to lose control of the saw which could result in serious personal injury. Do not rely exclusively upon the safety devices built into your saw. As a chain saw user, you should take several

PRODUCT SAFETY WARNINGS

steps to keep your cutting jobs free from accident or injury.

5. Kickback is the result of tool misuse and/or incorrect operating procedures or conditions and can be avoided by taking proper precautions as given below:

- a. Maintain a firm grip, with thumbs and fingers encircling the chainsaw handles, with both hands on the saw and position your body and arm to allow you to resist kickback forces. Kickback forces can be controlled by the operator, if proper precautions are taken. Do not let go of the chain saw.
- b. Do not overreach. This helps prevent unintended tip contact and enables better control of the chain saw in unexpected situations.
- c. Only use replacement bars and chains specified by the manufacturer. Incorrect replacement bars and chains may cause chain breakage and/or kickback.
- d. Follow the manufacturer's sharpening and maintenance instructions for the saw chain. Decreasing the depth gauge height can lead to increased kickback.
- e. The first time user should request an experienced operator in the use of the chainsaw and the protective equipment, and should have initial practice cutting logs on a saw horse or cradle.
- f. In the interest of personal safety it is highly recommended:
when using the chain saw always use it with residual current device (RCD) 30 mA or less.

PRODUCT SAFETY WARNINGS

Further important information:

Lay the power cable so that it will not come into contact with branches or similar objects.

Residual risks

Even if you use this electric power tool in accordance to instructions, certain residual risks cannot be eliminated. The following hazards may arise in connection with the equipment's construction and layout:

- a) Cut injuries if no safety clothing is used.
- b) Lung damage if no suitable protective dust mask is worn.
- c) Damage to hearing if no suitable ear protection is worn.
- d) Health damage caused by hand-arm vibrations if the equipment is used over a longer period or is not properly guided and maintained.

SYMBOLS

Safety symbols

The purpose of safety symbols is to attract your attention to possible dangers. The safety symbols and the explanations with them require your careful attention and full understanding. The symbol warnings do not, by themselves, eliminate any danger. The instructions and warnings they give are no substitutes for proper accident prevention measures.

WARNING: Be sure to read and understand all safety instructions in this operator's manual, including all safety alert symbols such as "**DANGER**," "**WARNING**," and "**CAUTION**" before using this tool. Failure to follow all instructions listed below may result in electric shock, fire and/or serious personal injury.

SAFETY ALERT SYMBOL: Indicates **DANGER**, **WARNING**, or **CAUTION**. May be used in conjunction with other symbols or pictographs.

Symbol meaning

This page depicts and describes safety symbols that may appear on this product. Read, understand and follow all instructions on the machine before attempting to assemble and operate.

SYMBOLS



Please read all of the safety and operating instructions carefully before using this machine. Read the instruction manual before operating.



This symbol, marking a point of safety, indicates a caution, warning or danger. Ignoring this warning can result in an accident to yourself or others. To limit the risks of injury, fire or electrocution, always follow the recommendations indicated.



Don't expose to rain.



Wear eye, ear and head protection.



Wear protective gloves.



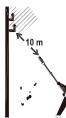
Wear protective boots.



Danger - Rotating blades. Keep hands and feet out of openings while the machine is running.




Remove the plug from the mains immediately if the cable is damaged or cut.





Electrical hazard, at least 10m away from the overhead electric-power lines.

SYMBOLS




 Conforms to applicable safety standards.

 This class II symbol indicates that the product is correctly insulated. Grounding this machine is therefore unnecessary.

 Recycle unwanted materials instead of disposing of them as waste. All tools, hoses and packaging should be sorted, taken to the local recycling center and disposed of in an environmentally safe way.

 Guaranteed sound power level.

TECHNICAL DATA

Model		ES N20
Mains voltage		230-240 V~, 50 Hz
Rated Power		750 W
Chain speed		12.5 m/s
No load speed		1850 min ⁻¹
Oil tank capacity		100 ml
Weight		3.9 kg
Saw chain		Oregon 91P033X (8"/20 cm)
Guide bar		Oregon 080SDEA318 (8"/20 cm)
Sound pressure level: LpA		85.70 dB(A) K=3 dB(A)
Sound power level: LwA		97.77 dB(A) K=3 dB(A)
Vibration front handle		2.543 m/s ² K=1.5 m/s ²
Vibration rear handle		2.064 m/s ² K=1.5 m/s ²



Noise/Vibration Information

Measured sound values determined according to EN 60745-1.

Vibration total values (triax vector sum) determined according to EN 60745-1.

The vibration emission level given in this information sheet has been measured in accordance with a standardised test given in EN 60745-1 and may be used to compare one tool with another.

It may be used for a preliminary assessment of exposure.

The declared vibration emission level represents the main applications of the tool. However if the tool is used for different applications, with different accessories or poorly maintained, the vibration emission may differ. This may significantly increase the exposure level over the total working period.

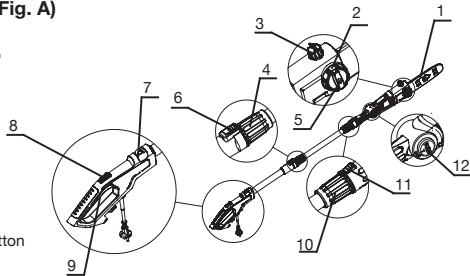
An estimation of the level of exposure to vibration should also take into account the times when the tool is switched off or when it is running but not actually doing the job. This may significantly reduce the exposure level over the total working period. Identify additional safety measures to protect the operator from the effects of vibration such as:

maintaining the tool and the accessories, keep the hands warm, organisation of work patterns.

DESCRIPTION OF PRODUCT

Parts description (Fig. A)

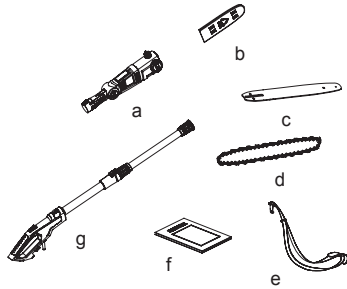
1. Scabbard
2. Chain tensioning knob
3. Oil tank cap
4. Collar
5. Fixing knob
6. Lock button
7. Strap Hanger
8. Lock-off Button
9. Switch trigger
10. Collar
11. Lock button
12. Angle adjustment button



Delivery contents (Fig. B)

Carefully unpack the appliance and check that it is complete. Dispose of the packaging material correctly.

- a. Power head
- b. Scabbard
- c. Guide bar
- d. Saw chain
- e. Shoulder strap
- f. Manual
- g. Handle with pole attached



WARNING: If any parts are damaged or missing, do not operate this tool until these parts are replaced. Failure to heed this warning could result in serious personal injury.



NOTE: Always recycle the packaging in accordance with local recycling guidelines.

ASSEMBLY

CAUTION!

Only connect the chainsaw to the mains supply once it has been completely assembled and the chain tension has been set. Always wear protective gloves when carrying out work on the chainsaw in order to prevent injury.

Assemble the Pole Saw

1. Align the guide recess on the power head pole with the guide lug on telescopic pole. (Fig. C)
2. Insert the telescopic pole into the power head pole. Screw on the collar until the lock button completely clicks into the notch on the collar, make sure the two poles are fixed securely. (Fig. D)

NOTE:

Rotate the collar in the direction of "🔒" to lock the telescopic pole and power head pole together. Pull back the lock button, then rotate the collar in the direction of "🔓" to unlock them.

WARNING!

Failure to lock the power head pole as directed above could result in serious injury.

Assemble the guide bar and chain

1. Remove the sprocket cover by loosening the fixing knob. (Fig. E)
2. Put the chain on the bar, beginning from the top, ensure the cutter teeth are facing the direction of the chain rotation. (Fig. F)
3. Place the saw chain around the sprocket. Make sure the slot in the guide bar is over the guidance. (Fig. G)
4. Attach the sprocket cover, press the fixing knob to screw on the sprocket cover, but do not tighten it. (Fig. H)
5. Rotate the chain tensioning knob clockwise to increase the chain tension. (Fig. I)
6. Following instruction in "chain tension adjustment" section to adjust the chain tension.
7. Tighten the fixing knob to make sure the guide bar with the saw chain has been securely tightened.

WARNING!

Always carry out a test run before starting work! Always ensure that the tools are in good condition, correctly mounted and able to turn freely. The trial run should be at least 30 sec.

Chain tension adjustment (Fig. I&J)

WARNING!

To avoid possible serious injury, never touch or adjust the chain while the motor is running. The saw chain is very sharp; always wear protective gloves when performing maintenance to the chain.

- 1) Stop the motor and disconnect from the power supply before setting the chain tension.
- 2) Place the chainsaw on a firm surface.
- 3) Rotate the fixing knob a few rotations to loosen the sprocket cover, but do not remove it.

NOTE:

Rotate the fixing knob in the direction of "🔒" to fix guide bar in place.
Rotate the fixing knob in the direction of "🔓" to loosen guide bar.
4) Turn the chain tensioning knob clockwise to tighten the chain.

ASSEMBLY

NOTE:

Rotate the chain tensioning knob clockwise to increase the chain tension.
Rotate the chain tensioning knob anticlockwise to loosen the saw chain.

5) The saw chain is correctly tensioned if it can be raised approx. 2 mm in the centre of the guide bar.

6) Tighten the fixing knob to make sure the guide bar has been securely tightened.

Note: The tension is correct when the chain snaps back after being pulled away 2 mm from the guide bar. There should be no sag between the chain and the guide bar.

CAUTION! All chain links must lie properly in the guide groove of the guide bar.

WARNING!

Do not over tension the chain as this will lead to excessive wear and will reduce the life of bar and chain. Over tensioning also reduce the amount of cuts you should get.

NOTE: A cold chain is correctly tensioned when there is no slack on the underside of the guide bar, the chain is snug, but it can be turned by hand without binding.

The chain must be re-tensioned whenever the flats on the drive links hang out of the bar groove.

During normal operation, the temperature of the chain will increase. The drive links of a correctly tensioned warm chain will hang approximately .050 in. out of the bar groove.

NOTE: New chains tends to stretch; check chain tension frequently and tension as required.

CAUTION!

Chain tensioned while warm, may be too tight upon cooling. Check the "cold tension" before next use.

Saw chain lubrication

CAUTION! Always pull out the mains plug before inspection and adjustment work. Always wear protective gloves when carrying out work on the chainsaw in order to prevent injury.

Attention! Never operate the chain without sawchain oil! The use of the chainsaw without sawchain oil or with an oil level below the minimum oil level mark results in damage to the chainsaw!

CAUTION! Only use special chainsaw oil. The warranty is voided with the use of used oil.

Filling the oil tank

Place the chainsaw on a level surface.

- Clean the area around the oil tank cap and then open it. (Fig. K)
- Fill the oil tank with chainsaw oil. In doing so, make sure that no dirt gets into the oil tank so that the oil nozzle does not clog.
- Close the oil tank cap.
- View the oil by checking the oil indicator. (Fig. L)

ASSEMBLY

Checking the automatic chain lubrication

Regularly check the functionality of the automatic chain lubrication in order to prevent overheating and the subsequent damage to the guide bar and saw chain associated with it. For this purpose, align the guide bar tip against a smooth surface (board, cut-in of a tree) and allow the chainsaw to run. If an increasing amount of oil appears, the automatic chain lubrication functions properly. If no clear trace of oil appears, please contact our customer service or a similarly qualified workshop.

CAUTION!

Do not touch the surface during the process. Maintain a sufficient safety clearance (approx. 20 cm).

OPERATION

Adjusting the telescope length (Fig. M)

Disconnect the chainsaw from the power supply.

Adjusting the telescope length.

1. Pull back the lock button.
2. Then rotate the collar in the direction of "↺" to loosen the telescopic pole.
3. Adjust the telescopic pole to the desired length by pulling out the telescopic pole, or pushing it in.
4. When the desired length is achieved, rotate the collar in the direction of "↻" to tighten the telescopic pole securely in place.

NOTE: Do not attempt to use the chainsaw at a length which does not allow you to achieve proper footing and balance at all times.

Work head angle adjustment

Disconnect the chainsaw from the power supply.

1. Press the angle adjustment button and adjust the work head to the desired angle. (Fig. N&O)
2. Release the angle adjustment button to lock the work head in the selected position.

Connection to the mains supply

NOTE: In order to avoid detaching the electrical cable, always check that extension cable is firmly attached to the cable holder before using the machine.

1. Make a loop with the extension cable and push it into the square hole of the cable holder.
2. Place the loop of cable over the end of the cable holder and make sure that it is pulled tight enough to prevent it coming loose when you use the machine.

Recommendation

Only connect the device to a power source that is protected via a residual current protective device (RCD) with a maximum release current of 30 mA.

STARTING: (Fig. P)

1. Connect the chainsaw to power supply.
2. Place your thumb on the lock-off button and push it to the front direction completely.
3. Activate the switch trigger to start the machine.

CAUTION! Do not place your finger in the front of switch trigger to avoid any injuries.

STOPPING

Release the switch trigger.

OPERATION

Working with the chainsaw

Preparation

Before each use, check the following to ensure work is carried out safely.

Condition of the chainsaw

Before beginning work, continuing after a break or dropping/ potentially damaging the chainsaw, inspect the chainsaw in order to identify any significant damage to the housing, the mains cable, the saw chain and the guide bar. Never use an obviously damaged machine.

Oil tank

Fill with oil to the required level in the oil tank. Also check whether there is sufficient oil available while working. Never operate the saw if there is no oil or the oil level has dropped below the minimum oil level mark in order to prevent damage to the chain saw. On average, an oil filling is sufficient for 10 minutes of operation, depending on the duration of pauses and the stress.

Saw chain

Tension of the saw chain, condition of the cutters. The sharper the saw chain is the easier and more manageable the chainsaw is to operate. The same applies for the chain tension. Also check the chain tension at least once every 10 minutes while working in order to increase safety! New saw chains, in particular, tend to have a higher degree of elongation.

Protective clothing

Make absolutely sure to wear the appropriate, close-fitting protective clothing, such as chainsaw-protective pants, gloves and safety shoes.

Hearing protection and protective goggles

Wear a safety helmet with integrated hearing protection and a face guard. This provides protection against falling branches and recoiling branches.

Attach the shoulder strap (Fig. Q)

1. Disconnect the chainsaw from the power supply.
 2. Slip the shoulder strap over your shoulder.
 3. Adjust the length of the shoulder strap by the buckle so that the strap attachment is at waist level.
 4. Install the hook on the shaft bracket on the shaft.
 5. Install the hook with quick release in the suspension point.
- NOTE:** In case of emergency, you can pull out the quick release to unfasten the strap quickly, to remove the machine.
6. The assembled shoulder strap.

Safe work

- In order to ensure safe work, a maximum working angle of 60° is advised.
- Never stand below the branch to be sawed.
- Exercise caution when sawing branches under tension or splintering wood.

OPERATION

- Potential risk of injury from falling branches and flying wood projectiles!
- If the machine is in operation, keep persons and animals away from the danger area.
- The machine is not protected against electric shock when coming into contact with high-voltage lines.
- Maintain a minimum clearance of 10m from current carrying lines. Life-threatening danger from electric shock!
- When working on an incline, always stand above or to the side of the branch to be sawed.
- Hold the machine as close as possible to your body. By doing so, you maximize your balance.

Sawing techniques:

- Make sure the chain is running at full speed before touching the branch to be cut.
- When removing branches, hold the machine at an angle ranging from a maximum 60° to horizontal in order to avoid being struck by a falling branch.
- Saw off the lower branches on the tree first. By doing so, it is easier for the cut branches to fall to the ground.
- At the end of the cut, the weight of the saw suddenly increases for the user, because the saw is no longer supported on the branch. There is the risk of losing control of the saw.
- Only pull the saw out of the cut with the saw chain running. By doing so, you can prevent it from getting jammed.
- Do not saw with the tip of the guide bar.
- Do not saw into thick branch formations. This impedes the trees ability to heal the wound.
- Using the shoulder strap is Important! Always use the shoulder strap when working with the equipment. Switch off the equipment before you take off the shoulder strap (risk of injury). And hold the chainsaw firmly with both hands.



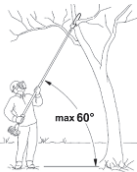
Working time and posture

Always keep a firm footing and balance position during operation. It takes lot of energy to cut the branches, please make sure to take a proper rest every 15 minutes in order to avoid of any potential danger due to over-fatigue. Always use the correct posture to cut the branches of high trees and the max angle shall be no more than 60°.

Advice : Remove branches in sections for safer work.

WARNING!

Some operating positions may be dangerous and can lead to damage and personal injuries, always follow the instructions of this manual. Be careful not to be hit by falling branches or branches which may bounce after hitting the ground.



OPERATION

Sawing off smaller branches

Place the stop face of the saw on the branch. This prevents fitful movements of the saw at the beginning of the cut. Applying light pressure, guide the saw through the branch from top to bottom.

Sawing off larger and longer branches

Make a relief cut when sawing larger branches.

- a) First saw through 1/3 of the branch diameter from bottom to top using the top side of the guide bar.
- b) Then saw from top to bottom to the first cut using the bottom side of the guide bar.
- c) Saw off longer branches in sections in order to maintain control over the location of impact.

Kickback

The term kickback refers to when the chainsaw suddenly jumps up and back. This is usually caused by the workpiece coming into contact with the guide bar tip or the clamping of the saw chain. A kickback generates abrupt, powerful forces. Therefore, the chainsaw usually reacts in an uncontrolled manner.

The consequence is often the severe injury of the user or nearby persons. The danger of a kickback is greatest if you apply the area near the guide bar tip to a branch, because the leverage effect is greatest there. Therefore, always apply the saw as flatly as possible.

CAUTION!

- Noise protection! Please observe the national regulations when operating your device, please refer to EC Conformity declaration about the sound power level.
- Always make sure that the chain tension is correct!
- Only use properly functioning chainsaws!
- Only work with a saw chain sharpened according to regulations!
- Never saw with the upper edge or tip of the guide bar!
- Always hold the chainsaw firmly with two hands!

Sawing wood under tension

Sawing wood which is under tension necessitates elevated caution!

Wood that is under tension and is then released from that tension when cut occasionally reacts in a completely uncontrolled manner. This can result in severe to deadly injuries. Such work may only be performed by trained specialists.

MAINTENANCE AND STORAGE

Good maintenance is essential for safe, economical and trouble-free operation. It will also help reduce air pollution.

The purpose of the maintenance and adjustment schedule is to keep the machine in the best operating condition.

Turn off and unplug the machine before performing any maintenance.

- Regularly clean the clamping mechanism by blowing it out with compressed air or cleaning it with a brush. Do not use tools for cleaning.
- Keep the handles free of grease so that you can maintain a firm grip.
- Clean the equipment as required with a damp cloth and, if necessary, mild washing up liquid.
- Never immerse the machine in water or other liquids.

Please never use non approved cutting attachments and never remove the safety devices as this could damage the machine or lead to serious injury.

Replacing the saw chain and guide bar

The guide bar must be replaced

- if the guide groove of the guide bar is worn out.
- if the spur wheel in the guide bar is damaged or worn out.

Sharpening the saw chain

Effective work with the chainsaw is only possible if the saw chain is in good condition and sharp. This also reduces the danger of a kickback. The saw chain can be re-sharpened by a specialty dealer. Do not attempt to sharpen the saw chain yourself if you do not have a suitable tool and the necessary experience.

Empty the oil

Before emptying oil, switch off the equipment and disconnect the mains plug.

1. Place the machine on an even and stable surface.
2. Loosen the oil tank cover and remove it.
3. Drain oil into a container thoroughly.
4. Reinstall the oil tank cover.

Storage

Store the machine, operating instructions and where necessary the accessories in the original packaging. In this way you will always have all the information and parts ready to hand. Always perform cleaning and maintenance of the appliance before storage. Pack the device well or use the original packaging in order to avoid transit damage.

Transport

CAUTION!

- Always replace the protective cover for transport or storage of the chainsaw.
- Store the chainsaw in a safe and dry place and out of the reach of children.
- Secure the machine during transport to prevent loss of oil, damage and injury.

TROUBLESHOOTING



WARNING!

Before troubleshooting, switch off the equipment and disconnect the mains plug. The following table shows fault symptoms and describes how they can be rectified if your machine is not functioning properly. If this does not help you and rectify the problem, contact your service workshop.

Fault	Possible cause	Solution
Chainsaw does not operate	No current supply	Check current supply
	Defective outlet	Try a different source of current, change as necessary
	Extension cable damaged	Check cable, replace if necessary
Chainsaw operates irregularly	Mains cable damaged	Call our customer support team
	External loose connection	Call our customer support team
	Internal loose connection	Call our customer support team
	Defective on/off switch	Call our customer support team
Saw chain dry	No oil in the tank	Re-fill oil
	Ventilation in the oil tank cap clogged	Clean oil tank cap
	Oil tank flow channel clogged	Unclog oil flow channel
Chain/guide rail hot	No oil in the tank	Re-fill oil
	Ventilation in the oil tank cap clogged	Clean oil tank cap
	Oil tank flow channel clogged	Unclog oil flow channel
	Dull chain	Re-sharpen or replace chain
Chainsaw jumps up, vibrates or does not saw properly	Chain tension too loose	Adjust chain tension
	Dull chain	Re-sharpen or replace chain
	Chain worn out	Replace chain
	Saw teeth pulling in the wrong direction	Re-mount saw chain with teeth in the correct direction

WARRANTY

Yard Force Warranty Statement.

All Yard Force products are covered by a standard two-year warranty which can be extended to three years if the product is registered online within 28 days of purchase. If you do not register your product within 28 days of purchase, the two-year warranty will apply. Battery packs are guaranteed for 1 year.

If your product becomes faulty within the warranty period due to defective materials or workmanship we will guarantee to

- Repair or replace all defective parts free of charge
- Repair product free of charge
- Replace the unit with a new or re-conditioned unit free of charge

Our 3 Year* warranty is subject to the following conditions:

- The machine has only been used for domestic tasks and has not been used in industrial applications
- The tool has not been misused
- The tool has been subjected to fair wear and tear only and has not been tampered with or modified in any way
- Unauthorised repairs have not been attempted

Your warranty does not cover:

- Components that are subject to natural wear and tear caused by normal use of the machine in line with the operating instructions, such as consumable parts and accessories
- Damage caused through negligence, abnormal working conditions or due to wilful actions of the operator
- Damage caused by using non-recommended spare parts or accessories
- Tools to which unauthorised changes or additions have been made
- Battery packs are not followed the maintenance in winter storage (see instruction manual).

*Standard 2 year warranty, plus additional 1 year warranty if product registered on line at www.yardforce.eu, within 28 days of purchase, against a valid proof of purchase receipt



+44(0)1904 727513



support@yardforce.co.uk

www.yardforce.eu

CE DECLARATION

To the provisions of Council Directives

We
SUMEC UK
Unit A&B Escrick Business Park Escrick, York YO19 6 FD

Declare that the product:
Description: 750W Electric Pole saw
Model No. ES N20 / PCSEG06AA
Function: Cutting wood

Complies with the essential health and safety requirements of the following directives:

Machinery Directive 2006/42/EC
Electromagnetic Compatibility Directive 2014/30/EU
EC Directive 2011/65/EU and its amendment Directive (EU) 2015/863 (RoHS)
Noise Emission in the Environment by Equipment for Use Outdoors Directive 2000/14/EC amended by 2005/88/EC
Conformity Assessment Procedure as Per Annex V
Measured Sound Power Level: 97.77 dB (A)
Declared Guaranteed Sound Power Level: 98 dB (A)

Standards and technical specification referred to:

EN 60745-1:2009+A11:2010
EN ISO 12100: 2010
EN ISO 11680-1: 2011
EN 55014-2: 2015
EN 55014-1: 2006+A1
EN 61000-3-2: 2014
EN 61000-3-3: 2013
EN 50581: 2012

Authorized Signatory
Date: 18.10.2019

Signature: M. Hall
Place: York
Name: Mariana Hall
General Manager

SUMEC UK Co., Ltd.
Unit A&B Escrick Business Park
Escrick, York YO19 6 FD

