



User Manual

Great care has gone into the manufacture of this product and it should therefore provide you with years of good service when used properly. In the event of product failure within its intended use over the course of the first 3 years after date of purchase, we will remedy the problem as quickly as possible once it has been brought to our attention. In the unlikely event of such an occurrence, or if you require any information about the product, please contact us via our helpline support services, details of which are to be found both in this manual and on the product itself.



PRODUCED IN CHINA FOR:

ALDI STORES LTD. PO BOX 26, ATHERSTONE
WARWICKSHIRE, CV9 2SH

ALDI STORES (IRELAND) LTD.
PO BOX 726, NAAS, CO. KILDARE
Visit us at www.aldi.com

AFTER SALES SUPPORT

806696



GB +44(0) 1904727501

IE +353(0) 19022605



support@coreservice.co.uk

MODEL:

S019

09/2021

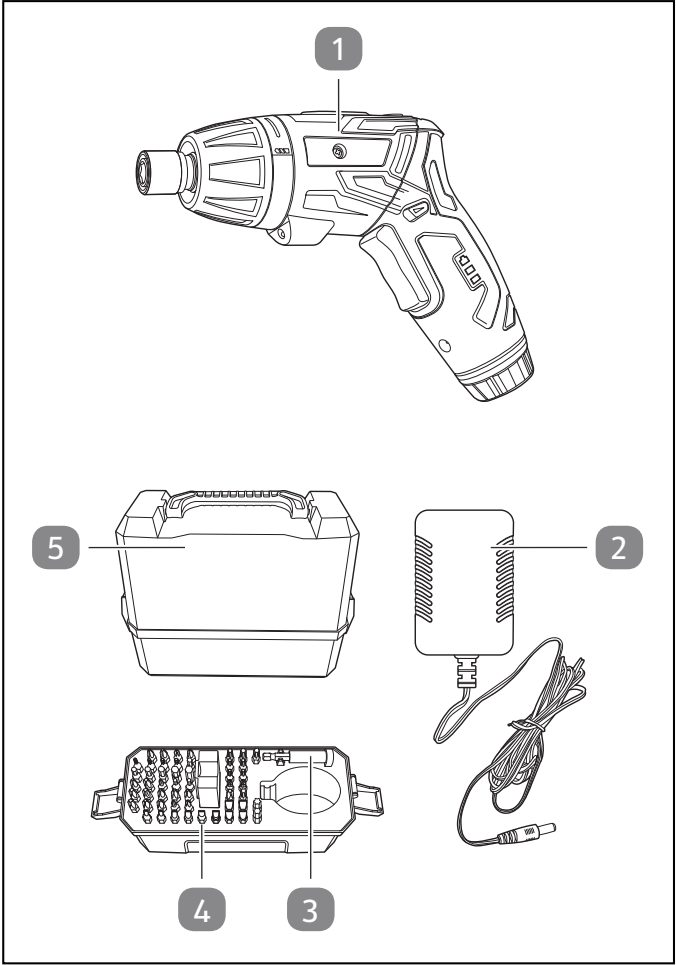


FERREX®

3.6 V LITHIUM-ION CORDLESS SCREWDRIVER



Original User Manual



Scope of delivery/device components

- 1 Cordless screwdriver
 - 2 Charger
 - 3 Bit holder
 - 4 Bit set
 - 5 Storage box
- User manual and warranty card (not depicted)

Table of content

Overview	2
Scope of delivery/device components	3
General information	5
Reading and storing the operating manual.....	5
Proper use.....	6
Explanation of symbols	6
Safety	7
Before first use	20
Operation	21
Charge Battery.....	22
Displaying the charge state.....	24
Inserting bits.....	24
Turning the device on and off.....	26
Left/right rotation switch and switch lock.....	27
Setting the torque.....	28
Using as a cordless screwdriver/straight screwdriver.....	29
Useful work tips.....	30
Screwing.....	30
Using the LED lamp.....	31
Cleaning	31
Maintenance	31
Inspection	32
Storage	32
Troubleshooting	33
Technical data	33
Declaration of conformity	36
Disposal	38

General information

Reading and storing the operating manual



This user manual is part of the 3.6 V lithium-ion cordless screwdriver (hereinafter also called "device"). It contains important information on how to set up and use the device.

Before using the device, read the operating manual carefully, in particular the safety instructions. Failure to follow this operating manual may lead to severe injuries or product damage.

This user manual is based on the standards and regulations that are valid within the European Union. Outside the EU, please also note the country-specific directives and laws.

Keep this operating manual for future reference. If you pass this device on to a third party, you must also supply this operating manual.

Residual risks

Despite proper use, hidden residual risks cannot be completely excluded.

Depending on the type of device, the following risks may occur:

- Health risks which may result from vibration emissions if the device is used for a long period of time or is not properly used or maintained.
- Injuries and material damage, which are caused by the moving blade or breaking tool heads.
- Health risks may result from working with toxic or hazardous materials (eg. asbestos) or if appropriate personal protection, due to hazardous material use, is not applied.

Proper use

The device is intended for inserting and removing screws in/from wood and wood-like materials.

This device is intended for private use only and is not suitable for commercial use. Use the device only as described in this operating manual. Any other use is improper and may lead to product damage or even personal injury. This device is not a toy.

The manufacturer or retailer assume no liability for damage caused by improper or incorrect use.

Explanation of symbols

The following symbols and signal words are used in this user manual, on the device or on the packaging.



This symbol provides you with useful additional information on handling and use.



Declaration of conformity (see chapter "Declaration of conformity"): Products marked with this symbol meet all the applicable Community regulations of the European Economic Area.

Explanation of symbols



The new UKCA (UK Conformity Assessed) marking declares that the product conforms to all applicable U.K. legislative requirements and that appropriate conformity assessment procedures have been successfully completed.



The “GS” (Tested Safety) certification mark confirms the device’s compliance with the German Product Safety Act (ProdSG for short).



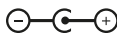
This symbol identifies devices that belong to the protection class II.



Read the operating manual.



The device is designed for interior use only.



This symbol describes the power adaptor’s polarity: negative (-), positive (+).



DC voltage

Safety

The following signal words are used in this operating manual.

⚠️WARNING!

This signal symbol/word denotes a hazard with an average risk level that could lead to death or severe injury if it is not avoided.

⚠️CAUTION!

This signal symbol/word denotes a hazard with a low risk level that could lead to mild or moderate injury if it is not avoided.

NOTE!

This signal word provides a warning about potential material damage.

General safety notes for power tools

⚠️WARNING!

Read all safety notes, instructions, illustrations and technical data provided with this power tool. Failure to follow the

instructions below may result in electric shock, fire and/or serious injury.

Keep all safety notes and instructions for future reference.

The term "power tool" used in the safety notes refers to both mains-operated power tools (with power cord) and battery-powered power tools (without power cord).

Workplace safety

- **Keep your work area tidy and well lit.**
Clutter or unlit work areas can lead to accidents.
- **Do not operate power tools in explosive atmospheres, such as in the presence of flammable liquids, gases or dust.** *Power tools create sparks which may ignite the dust or fumes.*
- **Keep children and bystanders away while operating a power tool.**
Distractions can cause you to lose control.

Electrical safety

- **Power tool plugs must match the outlet. Never modify the plug in any way. Do not use any adapter plugs with earthed (grounded) power tools.** *Unmodified plugs and matching outlets will reduce risk of electric shock.*
- **Avoid body contact with earthed or grounded surfaces, such as pipes, radiators, ranges and refrigerators.** *There is an increased risk of electric shock if your body is earthed or grounded.*
- **Do not expose power tools to rain or wet conditions.** *Water entering a power tool will increase the risk of electric shock.*

Personal safety

- **Stay alert, watch what you are doing and use common sense when operating a power tool. Do not use a power tool while you are tired or under the influence of drugs, alcohol or medication.** *A moment of inattention*

while operating power tools may result in serious personal injury.

- **Use personal protective equipment. Always wear eye protection.** *Protective equipment such as a dust mask, non-skid safety shoes, hard hat or hearing protection used for appropriate conditions will reduce personal injuries.*
- **Prevent unintentional starting. Ensure the switch is in the off-position before connecting to power source and/or battery pack, picking up or carrying the tool.** *Carrying power tools with your finger on the switch or energising power tools that have the switch on invites accidents.*
- **Remove any adjusting key or wrench before turning the power tool on.** *A wrench or a key left attached to a rotating part of the power tool may result in personal injury.*
- **Do not overreach. Keep proper footing and balance at all times.** *This enables*

better control of the power tool in unexpected situations.

- **Dress properly. Do not wear loose clothing or jewellery. Keep your hair and clothing away from moving parts.** *Loose clothes, jewellery or long hair can be caught in moving parts.*
- **If devices are provided for the connection of dust extraction and collection facilities, ensure these are connected and properly used.** *Use of dust collection can reduce dust-related hazards.*
- **Do not let familiarity gained from frequent use of tools allow you to become complacent and ignore tool safety principles.** *A careless action can cause severe injury within a fraction of a second.*

Using and handling the power tool

- **Do not overload the power tool. Use the appropriate power tool for your work.**

The right power tool allows you to work better and safer in the specified power range.

- **Do not use any power tool that has a defective switch.** *Power tools that can no longer be switched on or off are dangerous and must be repaired.*
- **Disconnect the plug from the socket and/or remove any removable batteries before making adjustments to the device, changing any insert tool parts, or putting the power tool away.** *This precaution helps prevent unintentional starting of the power tool.*
- **Keep power tools out of the reach of children when not in use. Whoever is not familiar with the power tool or who has not read these instructions should not be allowed to use it.** *Power tools are*

dangerous if used by inexperienced persons.

- **Power tools and insert tools must be subject to careful maintenance. Check whether moving parts function properly without jamming, and whether parts are broken or damaged to such an extent that they impair the functions of the power tool. Have damaged parts repaired before using the power tool.** *Many accidents happen due to poorly maintained power tools.*
- **Keep cutting tools sharp and clean.** *Carefully maintained cutting tools with sharp blades tend to jam less and are easier to guide.*
- **Use power tools, insert tools, insert tool parts, etc. according to these instructions. While doing so, take into account the working conditions and the activity to be performed.** *The use of power tools for applications other than*

those intended can lead to dangerous situations.

- **Keep handles and grip surfaces dry, clean and free of oil and grease.** *Slippery handles and grip surfaces hinder safe operation and control of the power tool in unforeseen situations.*

Using and handling the cordless tool

- **Only charge the batteries using chargers recommended by the manufacturer.** *Chargers suitable for a particular type of battery may present a fire hazard if used with other batteries.*
- **If used incorrectly, fluid may leak from the battery. Avoid touching it. In case of accidental contact, rinse with water. If the fluid gets into your eyes, seek additional medical attention.** *Leaking battery fluid may cause skin irritation or burns.*
- **Do not use a damaged or modified battery.** *Damaged or modified batteries*

Safety

may behave unpredictably and cause fire, explosion or injury.

- **Do not expose batteries to fire or excessive temperatures.** *Fire or temperatures above 130 °C may cause an explosion.*

- **Follow all charging instructions and never charge the battery or cordless tool outside the temperature range specified in the operating manual.** *Incorrect charging or charging outside the permitted temperature range can destroy the battery and aggravate the fire hazard.*

Service

- **Have your power tool serviced by a qualified repair person using only identical replacement parts.** *This will ensure that the safety of the power tool is maintained.*
- **Never service damaged battery packs.** *Service of battery packs should only be*

performed by the manufacturer or authorized service providers.

Additional safety notes for power tools

- Keep the device and its accessories away from hot surfaces.
- Do not let inexperienced persons use the device and its accessories.
- Persons with physical or mental impairments must not use the device and its accessories unsupervised.
- Children must not play with, clean or service the device and its accessories.
- Only use tools that fit into the power tool's retaining system.
- Let the tool cool down after use before touching it.
- Always wait until all moving parts come to a standstill after working with the tool.

Safety information for charger

Children aged 8 years and older as well as persons with reduced physical, sensory or mental abilities or a lack of experience and

Safety

knowledge may use the charger if they are supervised or have been given instruction on using the device in a safe way and understand the hazards involved.

- Children are not allowed to play with the device or with the power cable.
- Cleaning or user maintenance must not be undertaken by children unless supervised.
- **The mains cable of this charger cannot be replaced.** *Dispose of the charger if the mains cable is damaged.*

Power tools - charger

Using and handling the charger

- Only connect the charger if the mains voltage of the socket matches the information shown on the rating plate.
- Only connect the charger to an easily accessible socket so that you can quickly disconnect it from the mains power in the event of a malfunction.
- Always allow sufficient ventilation when charging the battery; gases may develop.

- Do not charge non-rechargeable batteries.
- Keep the charger away from any type of moisture.
- Never use the charger in environments where there are explosive or flammable materials. There is a risk of fire and explosion.
- Do not place objects on top of the charger and do not cover the charger.
- Keep the charger away from heat sources.
- Regularly check the charger for damage.
- Properly repair damaged chargers before using them again.
- The charger must not be disassembled. Repairs must only be undertaken by an approved technical customer service department.
- Do not use the charger if it has been subjected to knocks or blows or if it has been dropped.
- Always unplug the charger from the power supply after use.

Safety

- Unplug the charger from the power supply before cleaning, servicing, storage and transport and allow it to completely cool down.

Before first use

Check the device and scope of delivery

NOTE!

Risk of damage!

If opening the packaging with a sharp knife or other pointed objects, careless handling can damage the device.

- Therefore, be very careful when opening.
1. Take the device out of the packaging.
 2. Check that the delivery is complete (see chapter “Scope of delivery”).
 3. Inspect the device and individual parts for damage. Do not operate a damaged device; instead, contact the manufacturer via the service center listed on the warranty card.

Cleaning the device and accessories

1. Remove the packaging and all protective film.
2. Clean the device and accessories before using them for the first time.

⚠CAUTION!

Risk of injury!

A damaged device or damaged accessories can lead to injuries.

- Check the device and the accessories (see section "Testing").

⚠CAUTION!

Risk of injury!

The tool bit heats up during operation.

- Do not touch the tool bit until it has cooled down again.

Operation

This chapter describes how to operate the device. The following instructions for use serve for your own safety and for successful, safe use of the device.

Charge Battery

WARNING!

Risk of electric shock!

A faulty electrical installation, excessive line voltage, or incorrect operation may result in an electric shock.

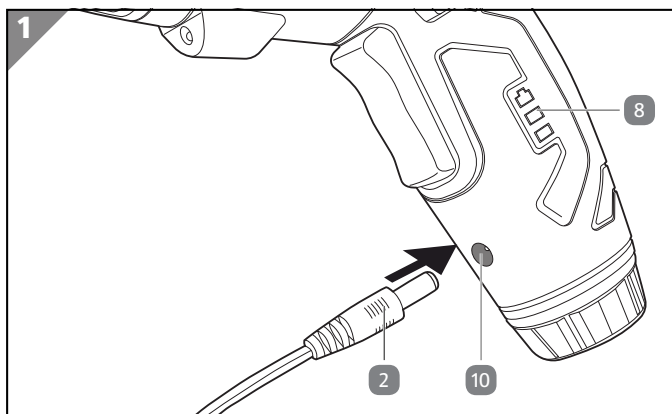
- Only connect the battery charger to an easily accessible outlet so that you can quickly disconnect it from the power supply in the event of a problem.

NOTE!

Risk of damage!

Incorrectly charging the battery can damage the battery, charger and device.

- Charge the battery in an ambient temperature between 0 ° C and 45 ° C. The optimal temperature for charging the battery is around 23 ° C.
- Charge the battery when the battery charge indicator shows weak battery performance (red lamp).



1. Plug the mains adapter of the charger **2** into the socket.
2. Plug the power connector of the charger into the charge socket **10**.

The battery charge indicator **8** flashes during charging and indicates the current charge state.

Once the battery is completely charged, all LEDs of the battery charge indicator are permanently lit.

The device cannot be operated during charging.

The charger and the battery heat up during charging. This is due to operating conditions and not a defect.

3. Once the device has finished charging, disconnect the charger from the socket and the plug from the charge socket.

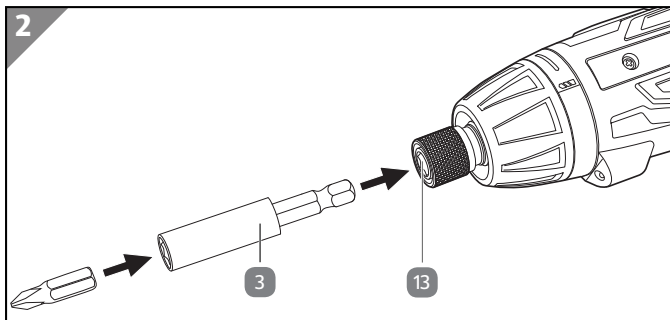
Displaying the charge state

- Press and hold the ON/OFF switch .

The screwdriver starts to rotate and the battery charge indicator **8** shows the current charge state of the integrated battery:

- **Red:** battery discharged, recharging required
 - **Red/yellow:** battery partially charged
 - **Red/yellow/green:** battery is fully charged
- Let go of the ON/OFF switch.
- The screwdriver stops rotating and the display goes off.

Inserting bits



1. Hold the bit support **13** between your thumb and finger and pull it towards the device.
2. Insert the supplied bit holder **3** into the bit support.
3. Let go of the bit support.
The bit holder is inserted.

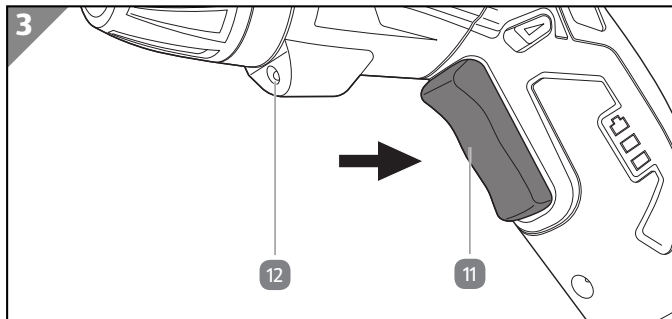
4. Insert the desired bit into the bit holder.

The bit is inserted.

Turning the device on and off



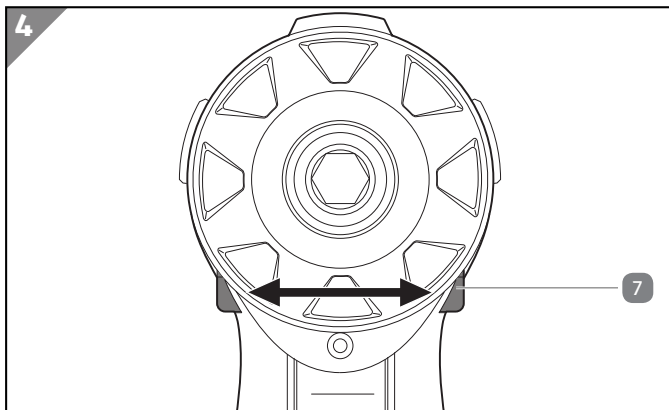
The device features an LED work light **12**. This lights up when pressing the ON/OFF switch **11**.



1. Press the ON/OFF switch to turn the device on.
2. Let go of the ON/OFF switch to turn the device off.

Left/right rotation switch and switch lock

The rotational direction of the device can be set with the left/right rotation switch and the switch lock **7**.



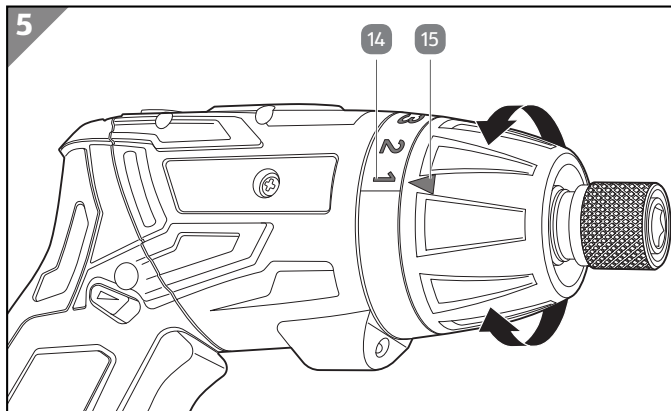
- Slide the left/right rotation switch to the left. The device rotates clockwise.
- Slide the left/right rotation switch to the right. The device rotates counter-clockwise.
- Slide the left/right rotation switch to the centre position to activate the switch lock.

Operation

Setting the torque

The torque can be adapted to the hardness of the workpiece with the torque selector **14**. 1 is the lowest and 6 the highest torque setting.

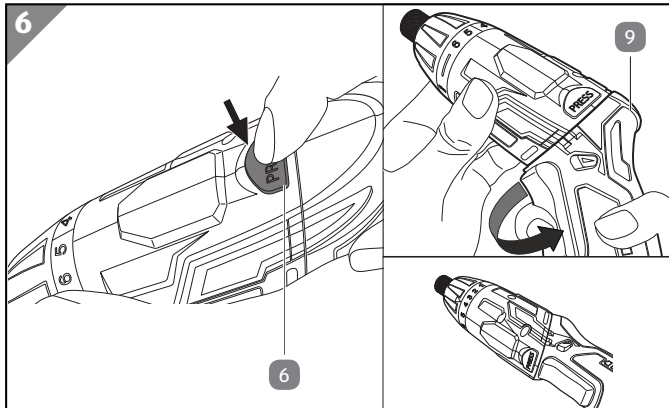
When set correctly, the slip clutch engages when the screw head is level with the workpiece. Use a leftover piece of material to determine the ideal torque.



- Turn the setting mark **15** to the desired torque value.

Using as a cordless screwdriver/straight screwdriver

The device features a foldable hand grip. It allows you to convert the device into a straight screwdriver. The better reach of the straight screwdriver makes it easier to work on hard-to-reach screws.



1. Press and hold the hand grip release button **6**.
2. Fold the hand grip **9** up in the clockwise direction.
3. Let go of the hand grip release button.
4. Proceed in reverse order to convert the device into a grip-held screwdriver.

Useful work tips

The following information helps you to achieve the best possible results when working with the device:

- It allows you to screw threaded screws into soft woods without pre-drilling. For other woods, we recommend pre-drilling the hole, especially in the case of large screw diameters.
- Countersink the drill holes if you want to use countersunk screws.
- When using screws without a continuous thread, pre-drill approximately half the screw length.

Screwing

1. Insert a bit (see section Inserting bits).
2. Set the torque selector **14** (see section Setting the torque). Start with a slow speed and increase this as required.
3. Set the desired rotational direction with the left/right rotation switch **7**.
4. Insert the bit straight into the slot and/or the slots of the screws.
5. Press the ON/OFF switch **11** to turn the device **1** on.
6. To stop screwing, let go of the ON/OFF switch.
7. Let the device and the accessories cool down completely once you have finished your work.
8. Remove the bit.

Using the LED lamp

NOTE!

Risk of damage!

Attempting to open the lamp by twisting can damage the device.

- The LED lamp is maintenance-free and cannot be opened or adjusted by twisting.
- Press on the lamp glass on the bottom of the hand grip **9** to turn the LED lamp on.
- Repeat the procedure to turn the LED lamp off again.

Cleaning

1. Allow the device to completely cool down.
2. Wipe the housing of the device with a clean, slightly damp cloth.
3. Wipe the charger with a clean, dry cloth.
4. Dry the device thoroughly and leave it to dry completely for some time.

Maintenance

The device and accessories are maintenance-free!



Do not lubricate the device. Dust and chips will deposit on a film of grease and increase wear!

Inspection

Regularly check the state of the device.

- Check the operating controls for damage.
- Check that the accessories are in perfect condition.

Do not operate a damaged device or accessory. Have the damaged device or accessory checked and repaired by an authorised service centre.

Storage

NOTE!

Risk of damage!

Improper storage of the device can result in damage.

- Allow the device to completely cool down.
 - Place the device so that it can't fall into water.
 - Store the device in a clean, dry, frost-protected place out of the reach of children.
1. Thoroughly clean the device (see "Cleaning").
 2. Always store device parts and accessories together with the device.
 3. If possible, pack the device in the original packaging.

Troubleshooting

Problem	Possible cause	Remedy
The device 1 cannot be switched on.	Insufficient battery power.	Charge the battery.
	The left/right rotation switch 7 is in the centre position.	Press the left/right rotation switch all the way in.

If the problem persists, contact the customer service listed on the last page.

Technical data

Model number:	S019
Item number:	806696
Battery specifications:	3.6 V/2.0 Ah lithium-ion battery
Rotational speed:	230 rpm
Bit support:	6.35 mm (1/4") hex
Maximum torque:	5 Nm

Charger:

Model:	YYD-S05B0500600Y
Input voltage:	100-240 V~, 50 Hz, 0.2 A
Charging voltage:	5.0 V / 0.6 A

Sound pressure level L_{pA}	61.8 dB(A)
Correction value K_{pA} :	3 dB(A)
Sound power level L_{WA}	72.8 dB(A)
Correction value K_{pA} :	3 dB(A)

Vibration measuring values

Screws (ah):	0.592 m/s ²
--------------	------------------------

Technical data

Correction value K: 1.5 m/s²

Scope of delivery bit set: 54 bits, 25 mm CRV
3 x PH0, 3 x PH1, 3 x PH2, 3 x PH3, 2 x PZ0, 2 x PZ1,
2 x PZ2, 2 x PZ3,
2 x SL3, 2 x SL4, 2 x SL5, 2 x SL6, 2 x SL7,
2 x H3, 2 x H4, 2 x H5, 2 x H6,
2 x T8, 2 x T10, 2 x T15, 2 x T20, 2 x T25, 2 x T27, 2 x
T30, 2 x T40
1 x magnetic bit holder

Noise/vibration information

The specified total vibration value and the specified noise emission values have been measured according to a standardized test method (EN62841-1/EN62841-2-2) and can be used to compare one power tool with another. They can also be used for a preliminary assessment of exposure.

Measured according to DIN EN 62841-2-2. The noise level of 85 dB (A) is not exceeded. Protective measures are nevertheless recommended for the user (wear suitable hearing protection). Also take into account possible deviations in the national regulations for the permitted workplace values.

Warning!

The vibration and noise emissions can deviate from the stated values during actual use of the power tool. This depends on the way the power tool is actually used and especially on the type of workpiece you are working on.

It is necessary to establish safety measures that protect the operator based on an estimate of the exposure during actual conditions of use (taking into account all parts of the operating cycle, such as periods when the power tool is switched off and periods when it is switched on but running without load).

Try to keep the exposure to vibrations and noise as low as possible. Examples of measures to reduce the exposure:

- wearing vibration-damping gloves while using the tool;
- limiting the working time;
- using accessories in good condition;
- regular maintenance and cleaning of the device;
- turning the device off while not in use;
- preventing overload of the device.

Declaration of conformity

Declaration of conformity

Original EU Declaration of Conformity

We,

MEROTEC GmbH
Otto-Brenner-Str. 8, D-47877 Willich, Germany

herewith declare under our own, sole responsibility that our product

3.6 V Cordless screwdriver
Model no. S019

complies with the following directives:

2006/42/EC Machinery Directive
2014/35/EU Low Voltage Directive
2014/30/EU EMC-Directive
2011/65/EU^{*)} RoHS-Directive, amended by (EU) 2015/863

Applied harmonized standards:

EN 62841-1:2015
EN 62841-2-2: 2014
EN 60335-1:2012+A11:2014+A13:2017+A1:2019+A14:2019#A2:2019
EN 60335-2-29:2004+A2:2010+A11:2018
EN 55014-1:2017+A11:2020
EN 55014-2:2015
EN IEC 61000-3-2:2019
EN 61000-3-3: 2013+A1:2019
EN 62233:2008
EN 50581:2012
EN 62471:2008

Document representative:

Dirk Wohlrab
MEROTEC GmbH
Otto-Brenner-Str. 8
D-47877 Willich



Place, date: Willich, 15.03.2021

Authorised Signature:


Ronald Menken
General Manager
MEROTEC GmbH

^{*)}The object of the declaration described above is in conformity with Directive 2011/65/EU of the European Parliament and of the Council of 8 June 2011 on the restriction of the use of certain hazardous substances in electrical and electronic equipment.

Declaration of conformity

Original EU Declaration of Conformity

We,

MEROTEC GmbH
Otto-Brenner-Str. 8, D-47877 Willich, Germany

herewith declare under our own, sole responsibility that our product

3.6 V Cordless screwdriver
Model no. S019

complies with the following directives:

Supply of Machinery (Safety) Regulations 2008
Electrical Equipment (Safety) Regulations 1994
Electromagnetic Compatibility Regulations 2016
The Restriction of the Use of Certain Hazardous Substances in Electrical and Electronic Equipm
Regulations 2012

Applied harmonized standards:

EN 62841-1:2015
EN 62841-2-2: 2014
EN 60335-1:2012+A11:2014+A13:2017+A1:2019+A14:2019#A2:2019
EN 60335-2-29:2004+A2:2010+A11:2018
EN 55014-1:2017+A11:2020
EN 55014-2:2015
EN IEC 61000-3-2:2019
EN 61000-3-3: 2013+A1:2019
EN 62233:2008
EN 50581:2012
EN 62471:2008

Document representative:

Dirk Wohlrab
MEROTEC GmbH
Otto-Brenner-Str. 8
D-47877 Willich

Place, date: Willich, 23.06.2021

Authorised Signature:


Ronald Menken
General Manager
MEROTEC GmbH

**UK
CA**

Disposal

Disposing of packaging



Dispose of packaging according to type. Sort the paperboard and cardboard as waste paper and the film as recyclable material.

Dispose of old electrical device



This symbol indicates that this product may not be disposed of together with domestic waste in compliance with the (2012/19/EU) Regulation pertaining to waste electrical and electronic devices (WEEE). This product must be handed in at a collection point intended for the purpose. This

can occur, for example, by handing it in at an authorised collecting point for the recycling of waste electrical and electronic equipment. Owing to potentially hazardous substances that are frequently contained in waste electronic equipment, incorrect handling of waste equipment may have a negative impact on the environment and on the health of human beings. By disposing of this product correctly, you are also contributing towards an efficient use of natural resources. Information on collecting points for waste equipment can be obtained from your local authority, an authorised institution for the disposal of waste electrical and electronic equipment or the waste collection services.



Batteries and rechargeable batteries must not go in domestic waste!

As a consumer you are legally obliged to dispose of all batteries, irrespective of whether they contain harmful substances* or not, at a collection point in your community/district or at a retail outlet, so that they can be disposed of in an environmentally friendly manner.

* marked with: Cd = Cadmium, Hg = Mercury, Pb = Lead, Li = Lithium.