



YARD FORCE®

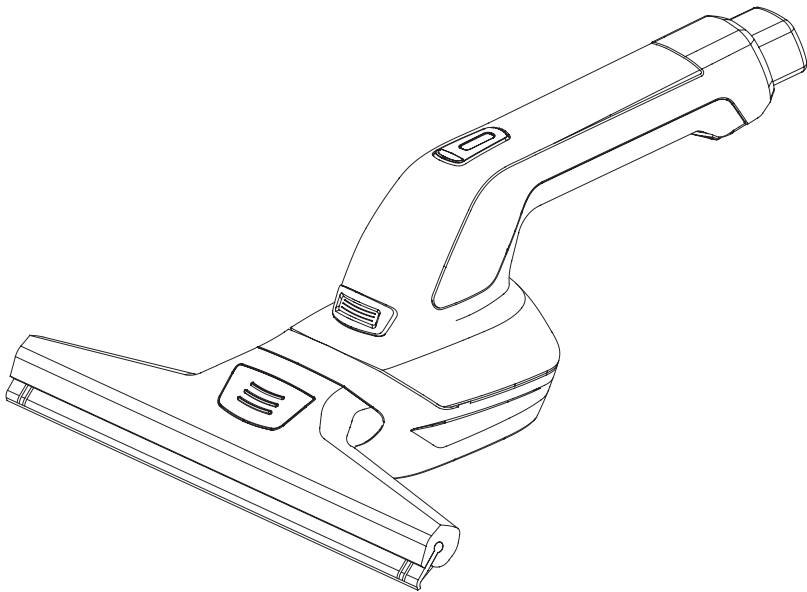
FOR LIFE ON THE GO

LW V28

GB

CORDLESS WINDOW CLEANER

Original Instructions



**READ & UNDERSTAND
INSTRUCTION MANUAL**

Save all warnings and instructions for future reference.

YARD FORCE

LW V28 Original Instruction

CONTENT

Intended use	04
General safety warnings	04
Symbols	08
Technical data	11
Description of product	12
Assembly	13
Operation	14
Maintenance and storage	17
Troubleshooting	18
Declaration of conformity	19



INTENDED USE

Only use the appliance in private households. The battery-powered appliance is designed for cleaning moist, smooth surfaces such as windows, mirrors or tiles. Observe the safety instructions.

For safety reasons it is essential to read this entire instruction manual before initial operation and to observe all the instructions inside.

This product is intended for private domestic use only, not for commercial trade use. It must not be used for any purposes other than those described.

GENERAL SAFETY WARNINGS

Read these safety instructions and the original operating instructions before using the device for the first time.

Proceed accordingly.

Keep the instructions for future reference or for future owners.

1. Prior to initial startup, please observe the graphical operating instructions for your device and these safety instructions.
2. In addition to the notes in the operating instructions, you also need to take into consideration the general safety regulations and accident prevention guidelines applicable by law.
3. Keep the packaging foil away from children, as this poses a suffocation risk.

General notes

WARNING: Persons with reduced physical, sensory or mental capabilities and persons lacking experience and knowledge may only use the appliance if they are properly supervised, have been instructed on use of the appliance safely by a person responsible for their safety, and understand the resultant hazards involved.

GENERAL SAFETY WARNINGS

Children must be supervised to prevent them from playing with the appliance.

- Children from the minimum age of 8 use the appliance if they are properly supervised or have been instructed in its use by a person responsible for their safety, and if they have understood the resultant hazards involved.
- Children may only perform cleaning work and user maintenance under supervision. Children must not play with the appliance.

ATTENTION: This appliance contains batteries that are with a changeable battery pack

Risk of electric shock

DANGER!

- Never touch the mains plug and socket with wet hands.
- Never touch contacts or lines.
- Never insert conductive objects, e.g. screwdrivers or similar, into the charging socket on the appliance.
- Do not expose the battery to strong sunlight, heat or fire.
- Do not direct the spray jet directly onto consumables containing electrical components, e.g. the interior space of ovens.

GENERAL SAFETY WARNINGS

WARNING: Only charge the appliance using the original charging wire approved by Yard Force.

- Immediately replace a damaged charger together with charging cable with an original part.
- Do not charge any damaged battery packs. Replace damaged battery packs with battery packs approved by Yard Force. Does not apply to appliances with a fixed battery
- Only use the charger for charging approved battery packs.
- The appliance contains electrical components, do not clean the whole appliance under running water.

ATTENTION

- Short circuit hazard. Do not store the battery packs together with metal objects.
- Only use and store the charger in dry rooms.

Operation

DANGER

- Risk of explosion. Do not charge batteries (primary cells).
- Do not throw battery packs into a fire or into the household rubbish.
- Avoid contact with fluid leaking from defective batteries. Immediately rinse off the fluid using water if contact is made, and also consult a doctor in the event of contact with the eyes.

GENERAL SAFETY WARNINGS

WARNING

Risk of injury. Do not direct the spray jet onto the eyes.

CAUTION

Do not use the appliance if it has been dropped beforehand, is visibly damaged or if it is leaking.

ATTENTION

Do not introduce any objects into the air outlet.

- Test the micro fibre wiping cloth on a spot that is not noticeable before you use the window cleaner on sensitive (high-gloss) surfaces.
- Store the appliance only so that it is standing horizontal.
- Store the appliance only in dry rooms.
- Switch off the appliance and empty the waste water tank when the level in the waste water tank reaches the MAX mark.

SYMBOLS

Safety symbols

The purpose of safety symbols is to attract your attention to possible dangers. The safety symbols and the explanations with them require your careful attention and full understanding. The symbol warnings do not, by themselves, eliminate any danger. The instructions and warnings they give are no substitutes for proper accident prevention measures.

WARNING: Be sure to read and understand all safety instructions in this operator's manual, including all safety alert symbols such as "**DANGER**," "**WARNING**," and "**CAUTION**" before using this tool. Failure to follow all instructions listed below may result in electric shock, fire and/or serious personal injury.

SAFETY ALERT SYMBOL: Indicates **DANGER**, **WARNING**, or **CAUTION**. May be used in conjunction with other symbols or pictographs.

Symbol meaning

This page depicts and describes safety symbols that may appear on this product. Read, understand and follow all instructions on the machine before attempting to assemble and operate.

SYMBOLS



Read the user manual before using the machine.



Warning! Danger!



WEEE symbol. Electrical products should not be disposed of with household waste. Please recycle where facilities exist. Check with your Local Authority or local store for recycling advice.



Do not expose the product to rain or wet conditions.



A product placed on the United Kingdom market meets the UKCA Marking requirements



The product complies with the applicable European directives and an evaluation method of conformity for these directives was done.

SYMBOLS

Symbols on the battery pack



Do not dispose of a battery pack in water!



Do not set on fire to dispose!



Do not expose the battery pack to sunlight or increased temperatures!



Do not dispose of batteries. Return exhausted batteries to your local collection or recycling point.



Li-Ion

Batteries contain Li-ion waste. Do not dispose of batteries as unsorted municipal waste with household waste. Check with your Local Authority or local store for recycling advice.

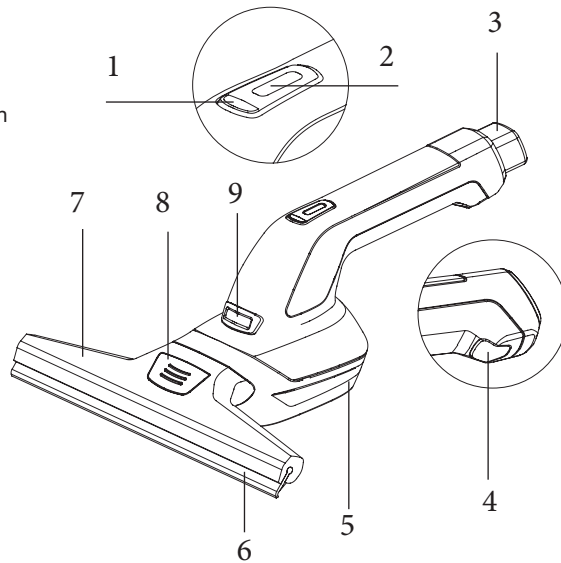
TECHNICAL DATA

Type	LS V28
Cleaning width	260 mm
Water tank volume	Max. 80 ml
Net weight	0.44 kg
Battery pack Type	AL V40
Battery capacity	4V = 4A, 14.4Wh
Input	max. 5V = 1A
Out put (USB type A)	5V = 1A
Measured sound power level(L _{WA})	76.86 dB(A)
Vibration	1.124 m/s ²

DESCRIPTION OF PRODUCT

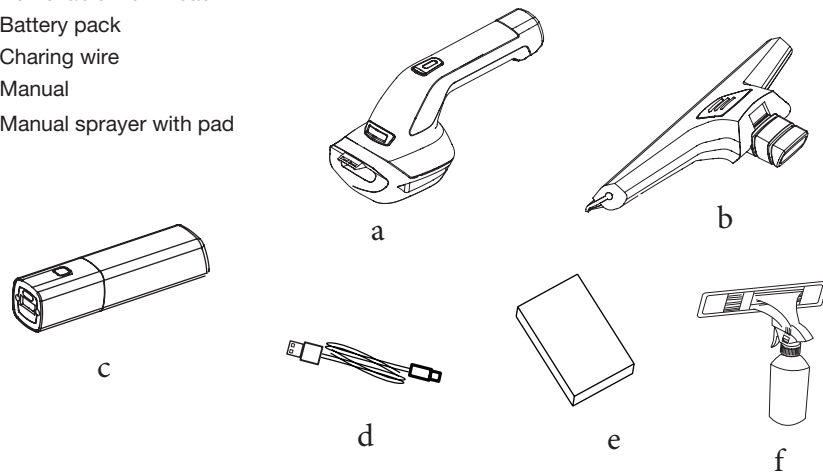
Parts description

1. Power indicator
2. ON/OFF button
3. Battery pack
4. Battery pack release button
5. Water tank
6. Rubber blade
7. Removable work head
8. Work head release button
9. Water tank release button



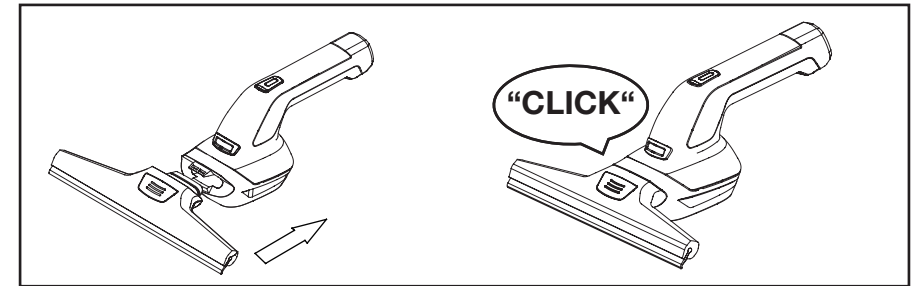
Checking the box contents

- a. Window cleaner handle
- b. Removable work head
- c. Battery pack
- d. Charging wire
- e. Manual
- f. Manual sprayer with pad

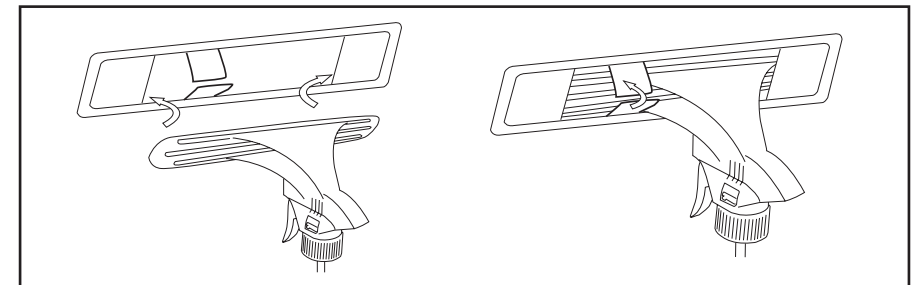


ASSEMBLY

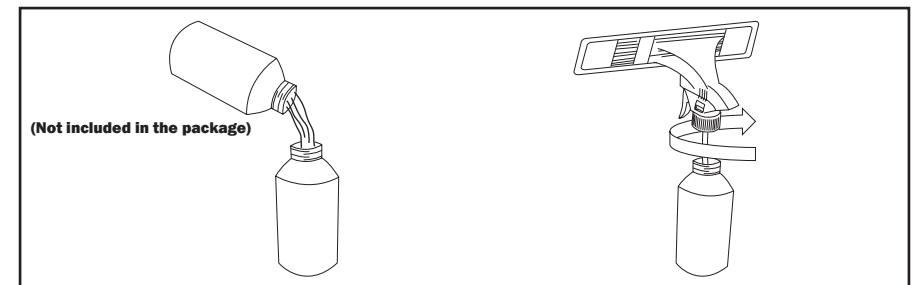
Install removable work head



Install the pad onto the bracket



Fill with water or cleaner mix solutions



NOTE: Obey the mix solutions required by the detergent.

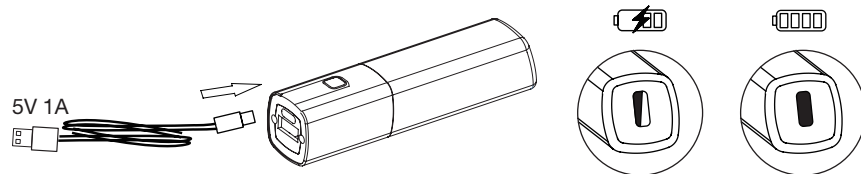
OPERATION

Charging the battery pack

WARNING! Do not use other charging wires which are not recommended by the manufacturer.

NOTE: The battery is supplied partially charged. To ensure full capacity of the battery, fully charge the battery before using it on the product.

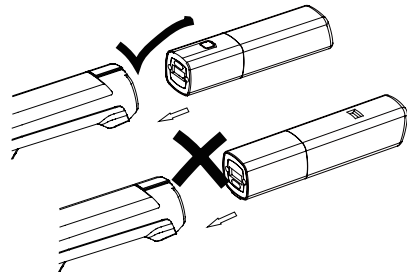
1. Connect the battery with the charging wire (Type C adaptor).
2. Select an USB type A power source that match to 5V 1A or less.
3. The green indicator will flash during normal use.
4. The Indicator will show green when battery pack has been fully charged.



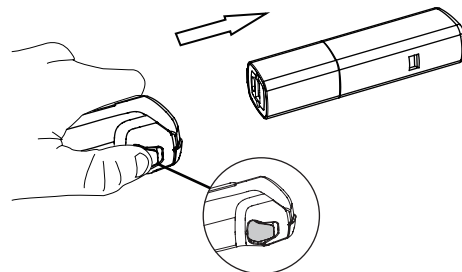
Insert the battery

- Insert the battery in to the device; make sure the battery pack is in the right orientation.

IMPORTANT: Make sure that the battery pack is inserted in the right orientation, torch light button on up side.



- If you want to uninstall the battery pack, press the battery pack release lever and then remove the battery pack .



OPERATION

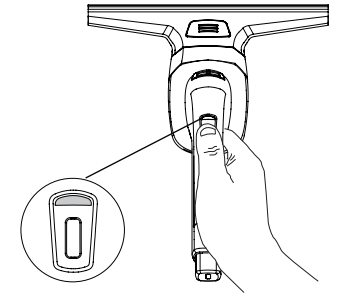
To switch ON:

- Press the ON/OFF button to switch ON the device.

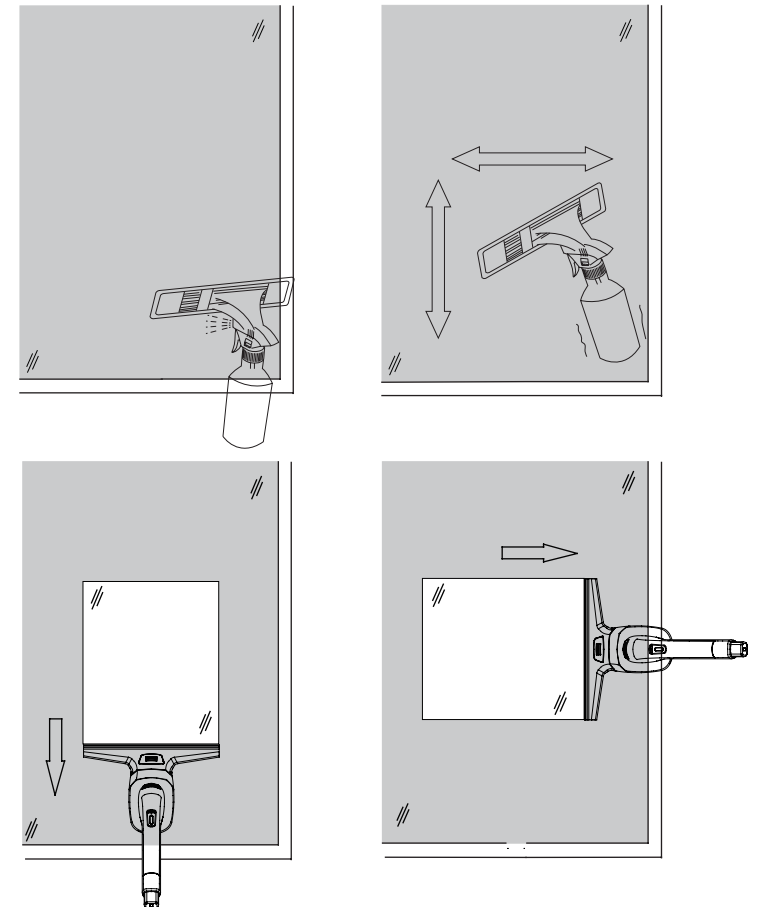
To switch OFF:

- Press the ON/OFF button again to switch OFF the device.

NOTE: The battery pack capacity indicator will turn red when the battery pack lack of power.



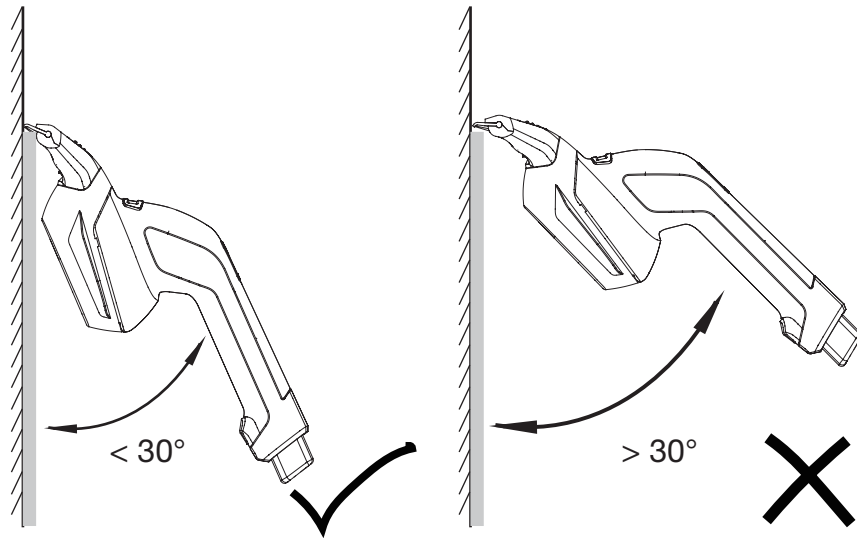
Working with the window cleaner



OPERATION

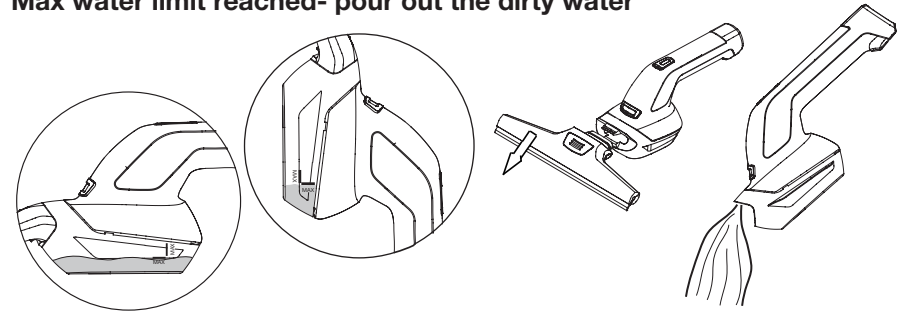
Working tips

To ensure the best clean and suction performance, when using the product, working angle should be less than roughly 30° and that no force is needed. If angle and/or force are increased, the suction will be reduced, pure working result.

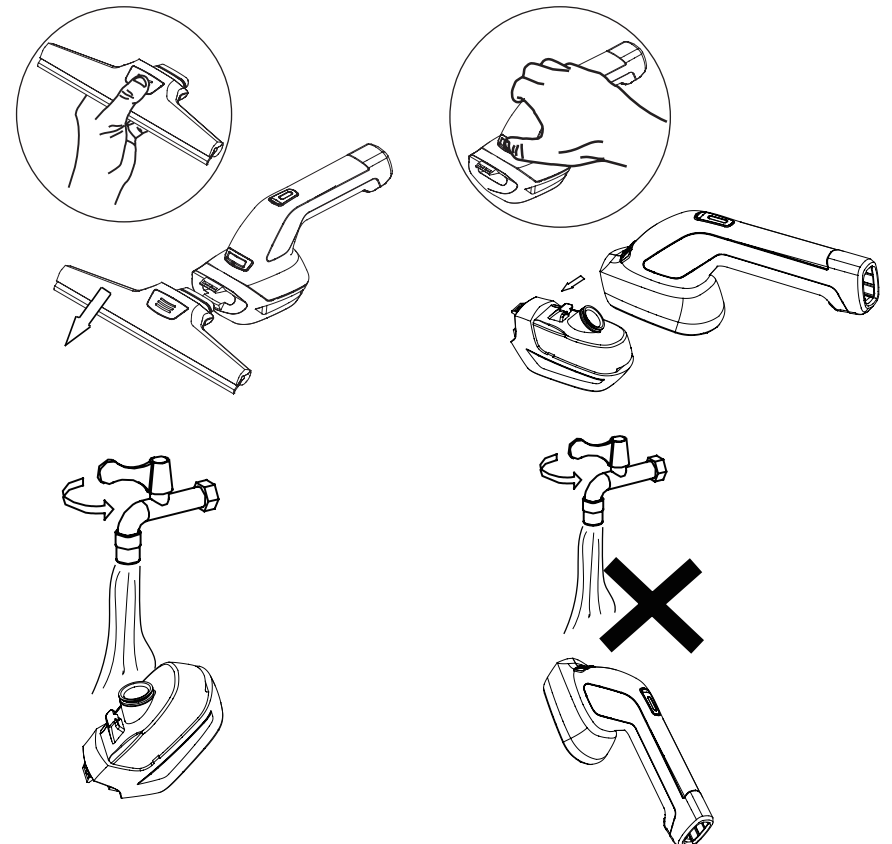


OPERATION

Max water limit reached- pour out the dirty water



Clean the water tank



MAINTENANCE AND STORAGE

WARNING: Always remove the battery pack before carrying out any cleaning, maintenance and storage.

WARNING: Always wear protective gloves before doing any cleaning and maintenance.

Maintenance

1. Always switch the product off, disconnect the battery pack and let the product cool down before performing inspection, maintenance and cleaning work.
2. Keep the product clean. Remove debris from it after each use and before storage, using a soft damp cloth.
3. Regular and proper cleaning will help ensure safe use and prolong the life of the product.
4. Inspect the product before each use for worn or damaged parts. Do not operate if you find broken or worn parts.

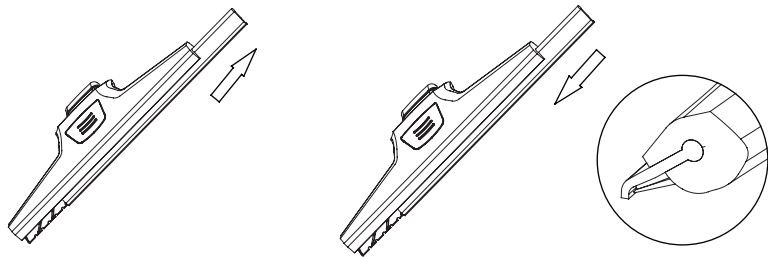
WARNING! Only perform repairs and maintenance work according to these instructions. All further works must be performed by a qualified specialist.

Cleaning

Before cleaning, inspecting your unit, make sure that the motor has stopped and is cool. Disconnect the battery pack to prevent accidental starting.

NOTE: To ensure the best performance of your product, it is important to keep it clean. Always clean your cordless window cleaner immediately after use. Never clean the product with a water jet or high pressure cleaner. The motor must remain dry. Do not use aggressive cleaning agents such as cold cleaner or petroleum ether.

Replace a new rubber blade



NOTE: Contact the after-sales centre if you need new extra rubber blade.

Transportation

1. Switch the product off and disconnect the battery pack from the machine before transporting it anywhere.
2. Attach transportation guards, if applicable.
3. Always transport the product by its handle. When lifting the product use the transportation handle as an aid.
4. Protect the product from any heavy impact or strong vibrations which may occur during transportation in vehicles.
5. Secure the product to prevent it from slipping or falling over.

MAINTENANCE AND STORAGE

Storage

1. Clean the product as described above and disconnect the battery pack.
2. Store the product and its accessories in a dry, frost-free area.
3. Always store the product in a place that is inaccessible to children. The ideal storage temperature is between 10°C and 30°C.
4. We recommend using the original packaging for storage or covering the product with a suitable cloth or enclosure to protect it against dust.

TROUBLESHOOTING

Fault	Possible cause	Troubleshooting
Device fails to start	Battery pack discharged	Charge the battery
	Battery pack defective	Contact service center
	Is the device defective	Contact service center
Bad suction performance	Water tank is full	Pour out dirty water
	Rubber blade worn	Replace a new rubber blade
Waste water is leaking out	Water tank max limit reached	Empty the tank

DECLARATION OF CONFORMITY

To the provisions of Council Directives

We
SUMEC UK Co.,Ltd.
Unit A&B, Escrick Business Park
Escrick, York YO 19 6FD

Declare that the product:
Machine Description: Cordless window cleaner
Machine Type: LW V28
Function: Cleaning window

Complies with the essential health and safety requirements of the following directives:

Supply of Machinery (Safety) Regulations 2008
Electromagnetic Compatibility Regulations 2016
Noise Emission in the Environment by Equipment for use Outdoors Regulations 2001
The Restriction of the Use of Certain Hazardous Substances in Electrical and Electronic Equipment Regulations 2012

Standards and technical specification referred to :

EN 55014-1:2006+A1+A2;
EN 55014-2:2015;
EN60335-1

Authorized Signatory
Date: 18.03.2021

Signature: M. Hall
Place: York
Name: Mariana Hall
General Manager

SUMEC UK
Unit A&B Escrick Business Park
Escrick, York
YO19 6FD



DECLARATION OF CONFORMITY

To the provisions of Council Directives

We
MEROTEC GmbH
Otto-Brenner-Str. 8, 47877 Willich
Germany

Declare that the product:
Machine Description: Cordless window cleaner
Machine Type: LW V28
Function: Cleaning window

Complies with the essential health and safety requirements of the following directives:

Machinery Directive 2006/42/EC
Electromagnetic Compatibility Directive 2014/30/EU
Noise Directive, amended by 2005/88/EC
EC Directive 2011/65/EU and its amendment Directive (EU) 2015/863 (RoHS)

Standards and technical specification referred to :

EN 55014-1:2006+A1+A2;
EN 55014-2:2015;
EN60335-1

Authorized Signatory
Date: 18.03.2021

Signature: Ronald Menken
Place: Willich
Name: Ronald Menken
General Manager

MEROTEC GmbH
Otto-Brenner-Str. 8
D-47877 Willich, Germany

