

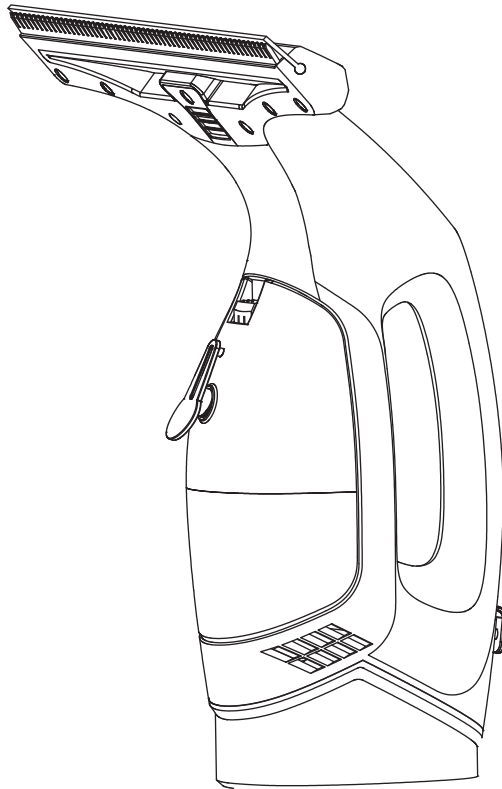
WESSEX

TOOLSTATION

Original User's Instructions

WESSEX Cordless Window Vac

SKU: 96553



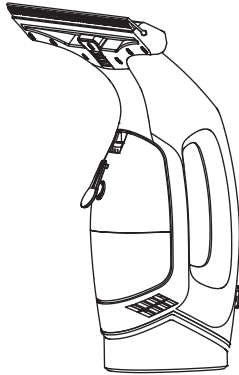
READ BEFORE USE

PLEASE KEEP THESE INSTRUCTIONS FOR FURTHER REFERENCE

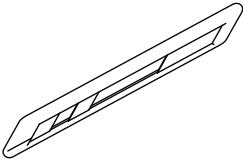
CONTENT

• WHAT'S IN THE BOX	3
• SPECIFICATIONS	4
• EXPLANATIONS AND SYMBOLS, CAUTIONS AND WARNINGS	5
• IMPORTANT SAFETY WARNINGS	6
• PRODUCT DESCRIPTION AND IDENTIFICATIONS	15
• ASSEMBLY AND OPERATING INSTRUCTIONS	16
• CARE AND CLEANING	24
• TROUBLE SHOOTING	25
• DECLARATION OF CONFORMITY / PERFORMANCE	26
• ENVIRONMENTAL INFORMATION	27
• GUARANTEE	28
• CUSTOMER SUPPORT	28

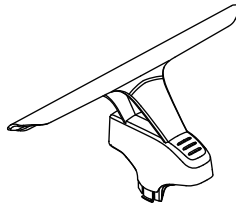
WHAT'S IN THE BOX



Window vacuum cleaner



Microfibre cloth



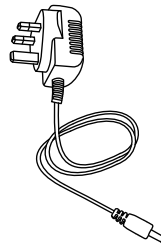
Microfibre cloth holder



Wiper attachment ring



Spray bottle



Charger

If you do not have all these items, please contact:

www.coreservice.co.uk

Hotline: +44 01904 947568

Email support@coreservice.co.uk

SPECIFICATION

- Streak-free cleaning
- Battery lasts up to 30 mins
- Can be used upright only
- Easy-to-empty water tank
- Lightweight, versatile & ergonomic design

Technical Data	
SKU / Model	96553 / GJ-WV01
Rated voltage	3.7V
Rated power	20W
Max suction power	1.7-2.0Kpa
Working width	280mm
Dirty water tank capacity	150ml Max.
Spray bottle capacity	300ml
Microfiber wiper width	265mm
IP rating of window vac	IPX4
Charger rated input	AC 100-240V, 50/60Hz, 0.4A
Charger rated output	5.0V d.c., 1.8A, 11W Max.
Dimension (D x W x H-mm)	33.5x28x15cm
Net weight(g) Approx.	790g
Protection class of charger	class II

EXPLANATIONS AND SYMBOLS, CAUTIONS AND WARNINGS



Double insulation (Only for charger)



The charger is for indoor use only.



UK Conformity Assessed



The product complies with the applicable European Directives and an evaluation method of conformity for these Directives was done.



WEEE symbol. Waste electrical products should not be disposed of with household waste. Please recycle where facilities exist. Check with your Local Authority or local store for recycling advice.



Battery contain Lithium-ion. Do not dispose of batteries in household waste.

Li-ion

IMPORTANT SAFETY WARNINGS



WARNING! Please read these safety instructions prior to the initial use of your appliance and act accordingly. Keep these safety instructions for future reference or subsequent owners.

When using appliances, basic safety precautions should always be followed to reduce the risk of fire, electric shock, and injury to persons, including the following:

- Use this appliance only as described in this manual.
- Use this battery operated appliance only for personal use, for cleaning moist, smooth surfaces such as windows, mirrors or tiles. Not meant for the vacuum of dust.
- The appliance is not intended to vacuum up larger amounts of fluids from horizontal surfaces, such as a tipped drinking glass.
- Only use this appliance with conventional window cleaners (no spirit, no foam cleaners).
- **WARNING:** Do not use this product for anything other than its intended use. Any other use not recommended by the manufacturer may cause fire, electrical shock, or injury to person.
- This appliance is not intended for use by persons (including children) with limited physical, sensory or mental capabilities or lack of experience and/or skills, unless such persons are accompanied and supervised by

a person in charge of their safety or they have received precise instructions on the use of this appliance and have understood the resulting risks.

- Children may only use this appliance if they are over the age of 8 and supervised by a person in charge of their safety, or if they have received instructions on the use of this appliance and have understood the resulting risks.
- Children must be supervised not to play with the appliance.
- **WARNING:** Do not immerse the appliance in use. When cleaning or operating the appliance, never immerse any of its electrical parts in water or other liquids.
- Cleaning and user maintenance shall not be made by children unless continuously supervised.
- **WARNING:** Do not direct the spray jet at the eyes. Do not direct the liquid from spray bottle towards persons or animals nearby.
- Never spray water or liquids directly at electrical devices or devices that contain electrical components, such as the interior of TV set, radio receiver, electric ovens.
- **WARNING:** Do not insert conductive objects (such as screwdrivers or the like) into the charging socket.
- The appliance shall not be left unattended while it is connected to the mains supply.
- The appliance must not be used if it has fallen on the ground, if there are visible signs of damage or if it is leaking.
- Before emptying the dirty water tank, make sure that the appliance is turned off and not connected to the charger.

- **WARNING:** Only use the appliance in its upright position.
- **WARNING:** Do not use corrosive chemicals or any products containing bleach with this window vacuum.
- **WARNING:** To ensure machine safety, use only original spare parts from the manufacturer or approved by the manufacturer.
- Only use the appliance in combination with regular no foam window cleaning agents.
- Never use the appliance outdoor in the rain.
- Wear appropriate Personnel Protection Equipment(PPE) while operation e.g. eye protection.
- Precautions must be taken when using the product at height.
- **WARNING:** Do not lean out of the window when using the product.
- Do not insert objects into vacuum aperture.
- If there is any possibility that the product or detergents could harm or discolour a surface, it is recommended that compatibility be tested in an inconspicuous area before use.
- Do not use undiluted acids, acetone or solvents.
- Do not use flammable liquids.
- Do not use boiling or hot water in the product or spray bottle.
- The product contains a battery that is non-replaceable.

Safety Warnings for Battery pack and Charger

Battery Safety Instructions.



WARNING! For the purposes of recharging the battery, only use the WESSEX battery charger provided with this appliance. Do not attempt to use any other charger with the appliance.

- Recharge only with the charger specified by the manufacturer. A charger that is suitable for one type of battery pack may create a risk of fire when used another battery pack. Incorrect use may result in electric shock, overheating or leakage of corrosive liquid from the battery.
- Under abusive conditions, liquid may be ejected from the battery, avoid contact. If contact accidentally occurs, flush with water. If liquid contacts eyes, additionally seek medical help. Liquid ejected from the battery may cause irritation or burns.
- Do not place appliance or their batteries near fire or heat. Continuous intense sunlight, fire or other heat sources may cause an increased danger of explosion.
- Batteries can explode in the presence of a source of ignition, such as a pilot light. To reduce the risk of serious personal injury, never use any cordless product in the presence of an open flame. An exploded battery can propel debris and chemicals. If exposed, flush with water immediately.
- Do not charge battery in a damp or wet location. Following this rule will reduce the risk of electric shock.

- Longer life and better performance can be obtained if the battery is charged when the air temperature is between 18°C and 24°C. Do not charge the battery in air temperature below 4°C or above 40°C. This is important as it can prevent serious damage to the battery.
- Do not disassemble the battery and avoid mechanical damage to the battery. Risk of short circuit and fumes may be emitted. Ensure fresh air and seek medical assistance in the event of discomfort.

Charger Safety Instructions

- The plug of the charger must match the outlet. Never modify the plug in any way. Unmodified plugs and matching outlets will reduce the risk of electric shock.
- Ensure the appliance is charged indoors only, in a dry, cool and well-ventilated environment.
- Do not subject the appliance to strong sunlight over long periods and do not leave it near a heat source. Heat damages the battery and there is a risk of fire or explosion.
- Allow a hot battery to cool before charging.
- Do not use non-rechargeable batteries.
- Do not attempt to charge appliance other than those supplied. The charger and appliance supplied with it are specifically designed to work together.
- Before each use, check the charger cable and plug. Do not use a defective charger and do not disassemble the charger. Incorrect reassembly may result in the risk of fire, electric shock or electrocution.
- Protect the charger against moisture and wet conditions. There is a danger of electric shock.

- Operate the charger only with the appropriate original batteries. Charging other batteries may result in injuries and risk of fire.
- Avoid mechanical damage to the charger. This can result in internal short circuits.
- Do not operate the charger on easily inflammable surfaces(e.g. paper, textiles, etc.) The heating of the battery charger during the charging process could pose a fire hazard.
- Do not abuse the cord of the charger. Never use the cord for carrying, pulling or unplugging the charger.
- Keep the cord away from heat, oil, sharp edges or moving parts. Damaged or entangled cords increase the risk of electric shock.
- Do not operate the charger with a damaged cord or plug, which could cause shorting and electric shock. If damaged, immediately discontinue use. Replace the charger with the identical unit as listed in the technical data in this manual. If the power cord for this equipment is damaged, it must be replaced by the manufacturer, a customer service agent of the same or qualified person in order to prevent hazards.
- The battery of the appliance is not fully charged at the time of delivery. It therefore needs to be fully recharged before you use it for the first time. For the first recharge cycle, charge the battery pack fully.
- Do not use a charger that has been dropped or received a sharp blow.
- The voltage indicated on the charger rating plate must correspond to the voltage of the power source.

- Never touch the mains plug with wet hands.
- It is good practice to unplug the charger when not in use.

Vibration and noise reduction

To reduce the impact of noise and vibration emission, limit the time of operation, as well as wear personal protective equipment.

Take the following points into account to minimise the vibration and noise exposure risks:

- Only use the product as intended by its design and these instructions.
- Ensure that the product is in good condition and well maintained.
- Use correct accessories for the product and ensure they are in good condition.
- Keep tight grip on the handles/grip surface.
- Maintain this product in accordance with these instructions and keep it well lubricated(where appropriate).
- Plan your work schedule to spread any high vibration tool use across a longer period of time.
- Prolonged use of the product exposes the user to vibrations that can cause a range of conditions collectively known as hand-arm vibration syndrome(HAVS) e.g. fingers going white, as well as specific diseases such as carpal tunnel syndrome. To reduce this risk when using the product, always wear protective gloves and keep your hands warm.

Emergency

Familiarise yourself with the use of this product by means of this instruction manual. Memorise the safety directions and follow them to the letter. This will help to prevent risks and hazards.

- Always be alert when using this product, so that you can recognise and handle risks early. Fast intervention can prevent serious injury and damage to property.
- Switch off if there are malfunctions. Have the machine checked by a qualified professional and repaired, if necessary, before you operate it again.

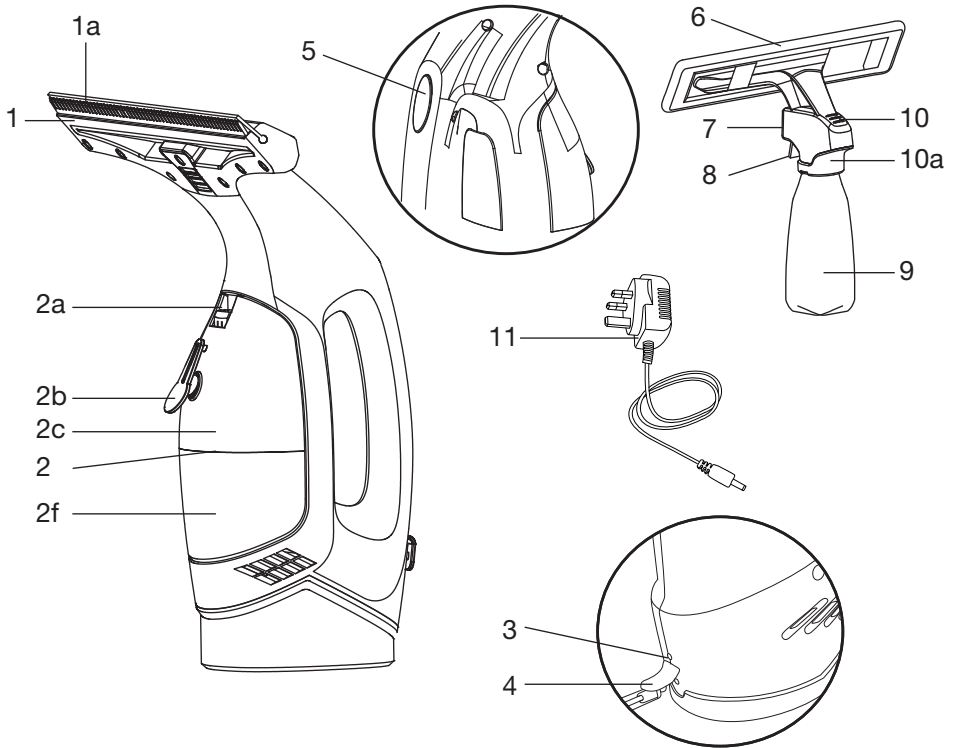
Residual risks

Even if you are operating this product in accordance with all the safety requirements, potential risks of injury and damage remain. The following dangers can arise in connection with the structure and design of this product.

- Health defects resulting from vibration emission if the product is being used over long periods of time or not adequately managed and properly maintained.
- Injuries and damage to property due to broken attachments or the sudden impact of hidden objects during use.
- Danger of injury and property damage caused by flying objects.

- **WARNING!** This product produces an electromagnetic field during operation. This field may under some circumstances interfere with active or passive medical implants. To reduce the risk of serious or fatal injury, we recommend persons with medical implants to consult their doctor and the medical implant manufacturer before operating this product.

PRODUCT DESCRIPTION AND IDENTIFICATIONS



- | | | |
|---------------------------|-----------------------------|--------------------------|
| 1. Suction attachment | f) Lower case | 7. Sprayer |
| a) Rubber strip | g) Max mark* | a) Sprayer tip* |
| b) Attachment lock* | 3. Charger status indicator | b) Sprayer nozzle* |
| c) Suction port* | 4. Charger socket cover | 8. Sprayer trigger |
| 2. Dirty water tank | a) Charger socket | 9. Sprayer bottle |
| a) Water tank lock | 5. On/off switch | a) Bottle cap* |
| b) Easy empty plug | 6. Microfibre cloth | 10. Wiper holder |
| c) Upper case | a) Hook and loop* | a) Wiper attachment ring |
| d) Inter-connection part* | b) Right cover* | 11. Charger |
| e) Seal ring* | c) Left cover* | |

Not all the accessories illustrated or described are included in standard delivery.

ASSEMBLY AND OPERATING INSTRUCTIONS

Unpacking



IMPORTANT: The machine must not be started during assembly.

- Unpack all parts and lay them on a flat, stable surface.
- Remove all packing materials and shipping devices if applicable.
- Make sure the delivery contents are complete and free of any damage. If you find that parts are missing or show damage do not use the product but contact your dealer. Using an incomplete or damaged product represents a hazard to people and property.
- Ensure that you have all the accessories and tools needed for assembly and operation. This also includes suitable personal protective equipment.

Assembly

- **WARNING!** The product must be fully assembled before operation. Do not use a product that is only partly assembled or assembled with damaged parts.
- **NOTE:** Take care of small parts that are removed during assembly or when marking adjustments. Keep them secure to avoid loss.

1. Sprayer assembly

- Unscrew the sprayer (7) from the sprayer bottle (9) in anti-clockwise direction (Fig.1, step 1) and take it off (Fig.1, step 2).
- Hold the wiper holder (10) and pull off the wiper attachment ring (10a) (Fig.1, step 3).
- Pass the wiper attachment ring (10a) through the bottle cap (9a) (Fig.1, step 4), then attach the wiper holder (10) on the sprayer (7), ensure that the hooks of wiper holder (10) align with the slots of wiper attachment ring (10a). Connect them by pressing the wiper holder (10) all the way until you hear a click (Fig.1, step 5).
- Place the assembled parts on the sprayer bottle (9) and twist it on in clockwise direction (Fig.1, step 6).

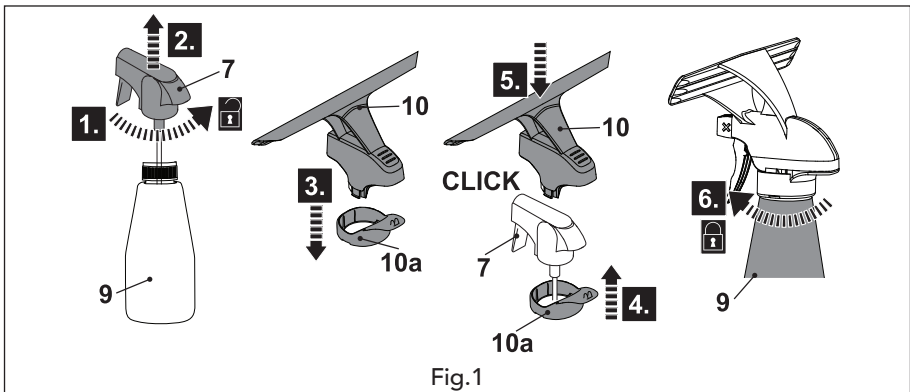
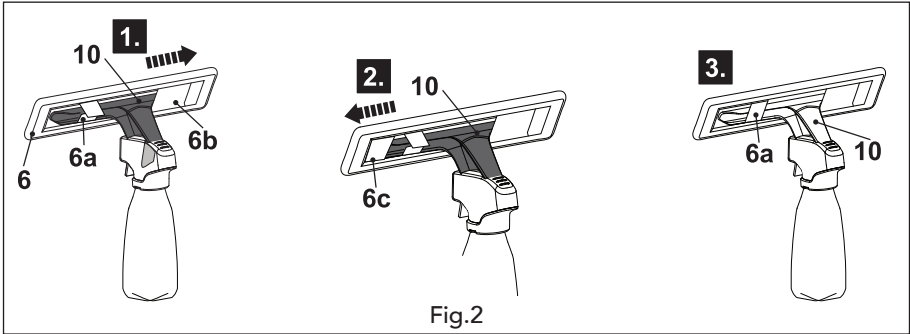


Fig.1

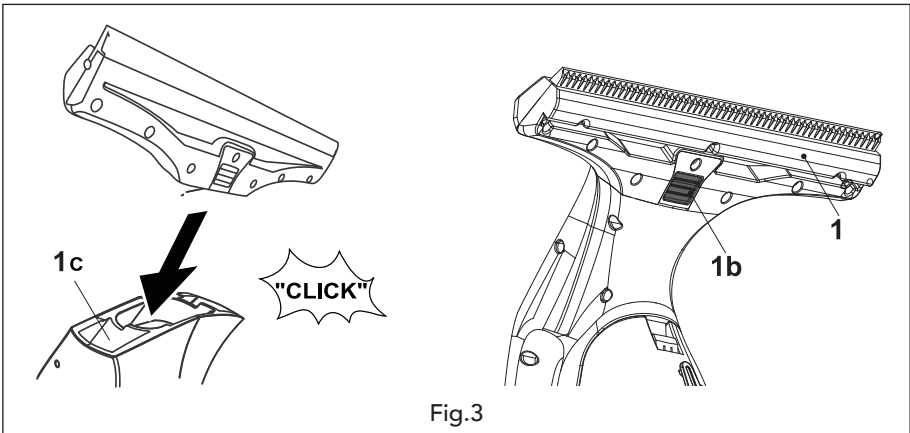
- Loosen the hook and loop (6a) of the microfibre cloth (6). Insert the right side of the wiper holder (10) into the right cover (6b) to the end (Fig.2, step 1). Pull up the left cover (6c) and insert the left side of the wiper holder (10) into it (Fig.2, step 2).
- Fasten the wiper holder (10) with the hook and loop (6a) afterwards (Fig.2, step 3).



2. Suction attachment assembly

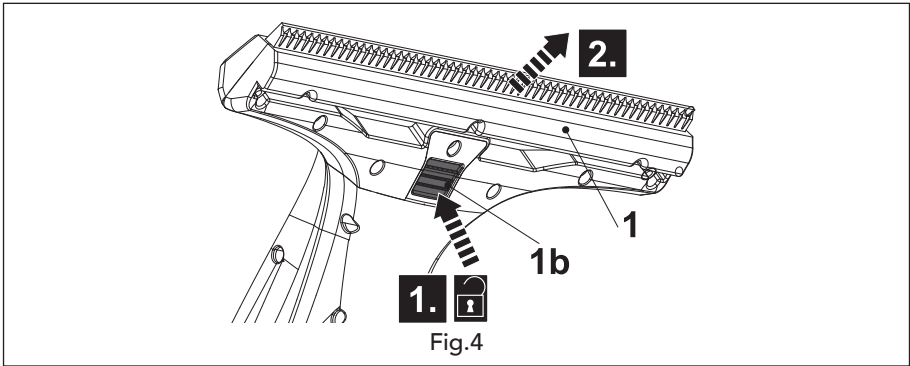
Attaching

- Align the suction attachment (1) to the suction port (1c) of the product. Insert the suction attachment (1) into the suction port (1c) all the way to the end until you hear a click (Fig.3).
- Ensure the attachment lock (1b) engaged properly in the slot of the product.



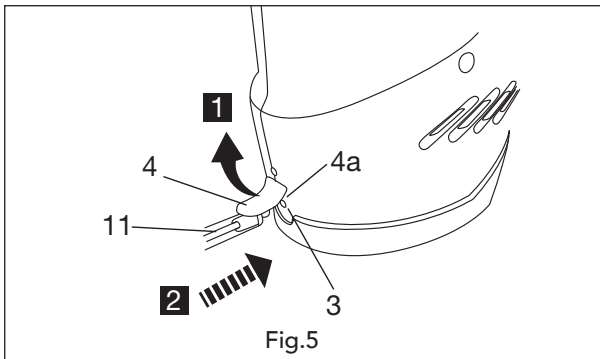
Detaching

- Press the attachment lock (1b) and hold it in position (Fig.4, step 1).
- Pull out the suction attachment (1) from the product (Fig.4, step 2).



3. Charger

- Use the charger (11) to charge the battery inside the product.
- **WARNING!** Do not charge the product with liquid in the dirty water tank (2).
- **NOTE:** Battery has been shipped in a low charge condition. Charge it fully before first use. Only charge with the correct charger.
- Open the charger socket cover (4) (Fig.5, step 1). Attach the charger to the charge socket (4a) (Fig.5, step 2). Ensure it engaged properly.
- Connect the charger plug to a suitable power supply.



- The charging status is indicated by the charging status indicator (3) as follows:

Charging status indicator (3)	Status
Flashing green light	Charging
Constant green light	Charging finished

NOTE: It is normal for the charger to become warm (but not hot) during charging process.

- When the battery is fully charged, disconnect the charger from the power supply and charge socket (4a).
- Reinstall the charger socket cover (4). Ensure it engaged properly.

Intended use

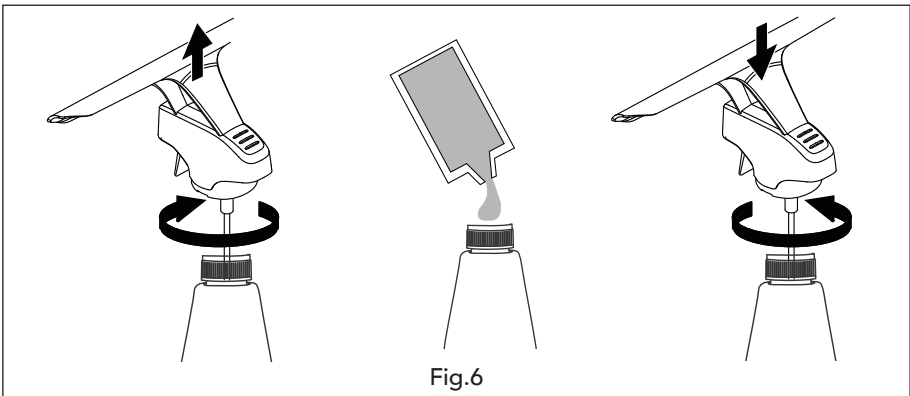
The product is designated with a rated voltage of 3.7V d.c.

The device is intended for domestic use to vacuum liquids from smooth, non-porous surfaces such as glass, mirrors and tiles. It is not suitable for vacuuming dust. The surfaces should be vertical, or near vertical, It is not suitable for horizontal surface cleaning. Use detergents designed for window vacuum machines.

For safety reasons it is essential to read the entire instruction manual before first operation and to observe all the instruction therein.

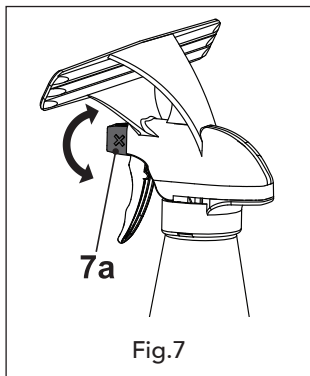
Sprayer bottle filling

- Loosen and remove the sprayer bottle (9) from the sprayer (Fig.6, step 1).
- Gradually add detergent mix into the bottle (Fig.6, step 2). Max. capacity of the bottle is approx.300 ml. Do not overflow.
- **NOTE:** Only use the appliance in combination with regular no foam window cleaning agent. Always follow dilution and/or concentration instructions given on packaging of suitable cleaning agents.
- Wipe any spilled detergent with a soft cloth and reattach the sprayer bottle (9) (Fig.6, step 3).



Sprayer tip

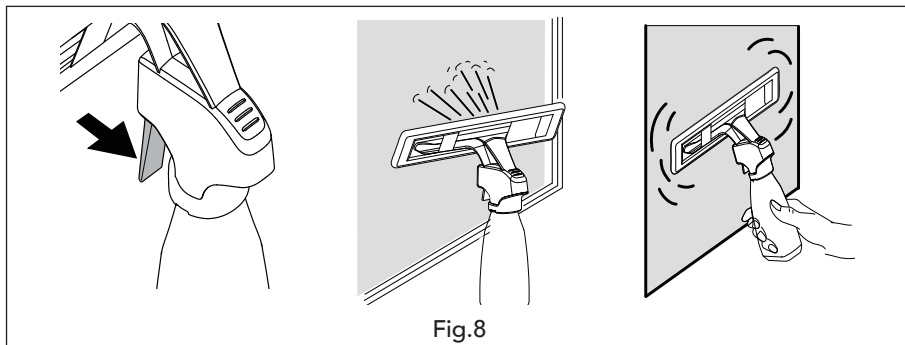
- Turn the sprayer tip (7a) to select the required spray mode (Fig.7) as follows.



Sprayer tip (7a)	Spray mode
	No spray.
	Spray with single stream.
	Spray with scattered stream.

Spray trigger

- Turn the sprayer tip (7a) to the single stream mode or scattered stream mode.
- Press the spray trigger (8) to spray the detergent from the spray nozzle (7b) (Fig.8).
- It might be necessary to press the trigger several times to spray the detergent on initial use.

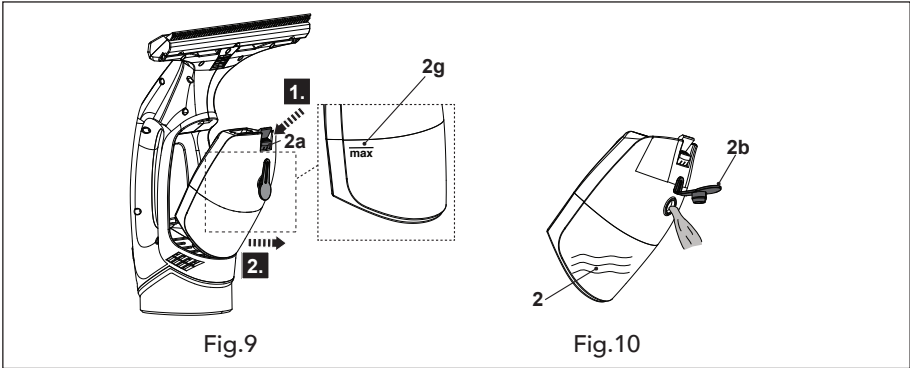


Dirty water tank

- Liquid on the surface to be cleaned is collected in the dirty water tank (2). Empty the dirty water tank (2) if the water level reaches the max. mark (2g) (approx.150 ml).
- **CAUTION!** The upper and lower tanks are not permanently connected, so operate the device carefully and take care not to spill the liquid.
- **WARNING!** Do not fill boiling or hot water in the dirty water tank.

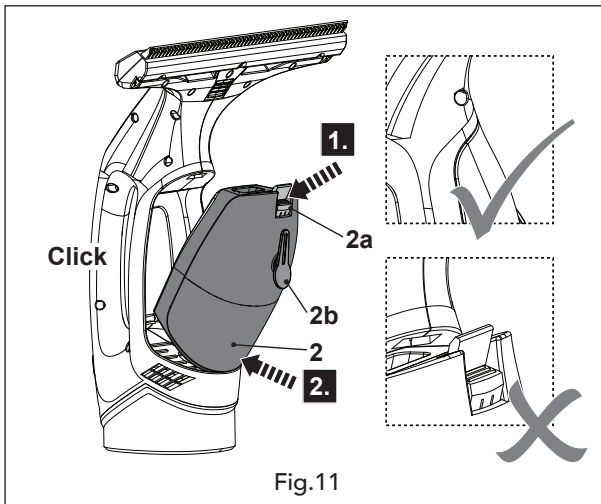
Detaching the dirty water tank

- Press down the water tank lock (2a) (Fig.9, step 1). The dirty water tank (2) will slightly pop up.
- Remove the dirty water tank (2) from the product (Fig.9, step 2).
- To empty the dirty water tank, open the easy empty plug (2b), tilt the dirty water tank (2) and pour the dirty water out. (Fig. 10, step 2)



Attaching the dirty water tank

- Close the easy empty plug (2b).
- Press down the water tank lock (2a) (Fig.11, step 1). Reinstall the dirty water tank (2) (Fig.11, step 2). Ensure the dirty water tank (2) is engaged properly with a click.
- Remove the dirty water tank (2) from the product (Fig.9, step 2).
- To empty the dirty water tank, open the easy empty plug (2b), tilt the dirty water tank (2) and pour the dirty water out.



On/Off switch

- Switch the product on by pressing the On/Off switch (5) (Fig.12).
- Press the On/Off switch (5) again to switch the product off.

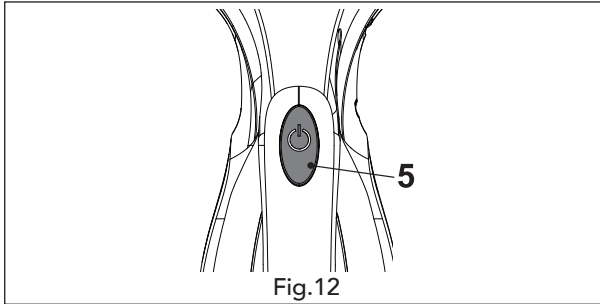


Fig.12

Operation

- **NOTE:** Only use the appliance in combination with regular no foam window cleaning agent. Always follow dilution and/or concentration instructions given on packaging of suitable cleaning agents.
- Fill the spray bottle (9) with water/ window cleaning agent solution.
- Set the sprayer tip (7a) to the selected stream type and evenly spray the water on the surface you want to clean (Fig.13).
- Clean the surface with the microfibre cloth (6). Re-spray if necessary.
- **WARNING!** Prior to each use, check the suction attachment for any dirt residues (particles) that might scratch the cleaned surface. If the suction attachment is dirty, wipe it with a clean, damp cloth.
- Press the On/Off switch(5) to turn on the product.
- Set the product with the suction attachment (1) at the top of the surface to be cleaned (e.g. a window). Slowly move the product all the way down the surface being cleaned, ensuring that the rubber blade remains in contact with the surface at all times. Water and detergent residue will be removed and sucked into the dirty water tank (2) (Fig.14).
- Continue along the surface being cleaned, slightly overlapping the previous stroke each time, until the whole surface is complete.
- **WARNING!** Move the product from top to bottom. You must not slide the product horizontally when cleaning the surfaces.
- If water level reaches the max.mark (2g), switch off the product and empty the dirty water tank (2).

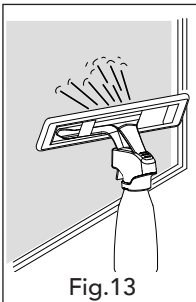


Fig.13

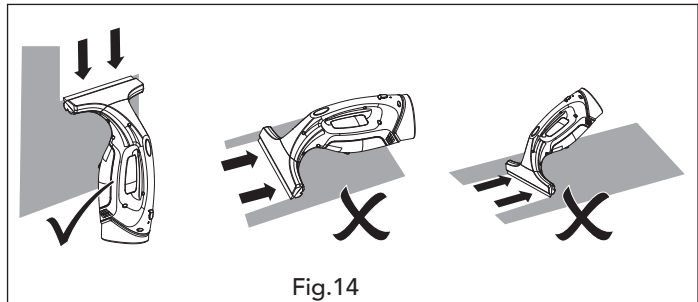


Fig.14

Operation tips

- Switch off the product before removing the dirty water tank (2).
- Pay attention to the pressure applied on window/glass. Do not damage window/glass.
- Pay attention to the liquid flowing down the window/glass.
- The appliance is not intended to vacuum up fluids from horizontal surfaces.
- Do not use the product on glass with uneven surface such as frosted, textured, patterned etc.
- The product must not be used to clean cracked or broken windows.

CARE AND CLEANING



WARNING! Always switch the product off and make sure that the charger is removed from the charger socket(4a), let the product cool down before performing inspection, maintenance and cleaning work. Only perform repairs and maintenance work according to these instructions! All further works must be performed by a qualified specialist!

- Press the On/Off switch(5) to turn off the product.
- Disassemble the dirty water tank (2) and empty it if necessary.
- Disassemble the microfibre cloth (6) in the reverse sequence of the assembly instructions.
- Clean the microfibre cloth (6) with fresh water and mild soap.
- Disassemble the suction attachment (1).
- Clean the chamber and the rubber strip (1a) with water.
- Dry the whole suction attachment (1) before reassembling.
- Keep the product clean. Remove debris from it after each use and before storage.
- Regular and proper cleaning will help ensure safe use and prolong the life of the product.
- Inspect the product before each use for worn and damaged parts. Do not operate it if you find broken and worn parts.
- Clean the product with a slightly damp cloth and mild soap. Use a dry brush for areas that are hard to reach.
- **NOTE:** Do not use any chemical, alkaline, abrasive or other aggressive detergents or disinfectants to clean this product as they might be harmful to its surfaces.
- Store the product and its accessories in a dry, frost-free place. Always store the product in a place that is inaccessible to children. The ideal storage temperature is between 10°C and 30°C.
- Protect the product from any heavy impact or strong vibrations which may occur during transportation in vehicles.
- We recommend using the original package for storage or covering the product with a suitable cloth or enclosure to protect it against dust.

TROUBLE SHOOTING

Use this section to help and solve any problems you may have:

PROBLEM	POSSIBLE CAUSES	REMEDIES
Product does not start	<ul style="list-style-type: none"> • Battery discharged • Battery too hot/cold • Other electrical defect to the product 	<ul style="list-style-type: none"> • Recharge battery • Allow to cool/warm • Contact your nearest authorised service centre.
Restricted or no vacuum	<ul style="list-style-type: none"> • Suction attachment blocked • Dirty water tank does not be assembled properly 	<ul style="list-style-type: none"> • Unblock suction attachment • Reassembled the dirty water tank properly
Product turns itself off	<ul style="list-style-type: none"> • Battery too hot/cold 	<ul style="list-style-type: none"> • Allow to cool/warm
Battery will not charge	<ul style="list-style-type: none"> • Battery charger not connected correctly • Battery too hot/cold 	<ul style="list-style-type: none"> • Check battery charger connection • Allow to cool/warm
Streaking on windows	<ul style="list-style-type: none"> • Rubber strip damaged • Too much force applied • Too little force applied 	<ul style="list-style-type: none"> • Replace rubber strip • Apply reduced force • Apply more force

NOTE: IF YOU EXPERIENCE A PROBLEM WITH YOUR MACHINE, PLEASE DO NOT ATTEMPT TO OPEN OR REPAIR THE MACHINE YOURSELF. DOING SO MAY VOID THE WARRANTY AND COULD CAUSE DAMAGE OR PERSONAL INJURY. IF THE PROBLEM STILL PERSISTS, PLEASE CONTACT US BY REFERRING TO THE SERVICE & SUPPORT INFORMATION ON THE FOLLOWING PAGE.

DECLARATION OF CONFORMITY / PERFORMANCE



Product Code: 96553(GJ-WV01)

Product Description: WESSEX Cordless Window Vac

1. Toolstation Limited, Express Park, Bristol Road, Bridgwater, Somerset TA6 4RN

This declaration of conformity is issued under the sole responsibility of Toolstation

2. Object of the declaration

The object of the declaration described above is in conformity with the relevant Community harmonization legislation:

- Electrical Equipment (Safety) Regulations 2016 (LVD 2014/35/EU)
- Electromagnetic Compatibility Regulations 2016(EMC 2014/30/EU)
- The Restriction of the Use of Certain Hazardous Substances in Electrical and Electronic Equipment Regulations 2012(RoHS 2011/65/EU&2015/863/EU)
- REACH (EC) No 1907/2006

3. References to the relevant standards used (or references to the specifications in relation to which conformity is declared:

- BS EN 60335-1
- BS EN 60335-2-2
- BS EN 62233
- BS EN 55014-1
- BS EN 55014-2
- BS EN 61000-3-2
- BS EN 61000-3-3

4. Additional information:

Signed for and on behalf of Toolstation Limited

ENVIRONMENTAL INFORMATION



The symbol on the product or its packaging indicates that this product must not be disposed of with your other household waste. Instead, it is your responsibility to dispose of your waste equipment by handing it over to a designated collection point for the recycling of waste electrical and electronic equipment. The separate collection and recycling of your waste equipment at the time of disposal will help conserve natural resources and ensure that it is recycled in a manner that protects human health and the environment. For more information about where you can drop off your waste for recycling, please contact your local authority, or where you purchased your product.

GUARANTEE

Toolstation products deliver reliable service for normal, household use in domestic settings. All Toolstation products are individually tested before leaving the factory. If you are a consumer and you experience a problem with your Toolstation product, which is found to be defective due to faulty materials or workmanship within the Guarantee Period, this Toolstation Guarantee will cover repair or - at the discretion of Toolstation – replacement with a functionally equivalent Toolstation product. Your product is under guarantee for 1 year from the date of purchase or the date of delivery of the product, if later.

The guarantee is subject to the following provisions:

- The guarantee does not cover accidental damage, misuse, cabinet parts, knobs, or consumable items.
- The product must be correctly installed and operated in accordance with the instructions contained in this manual.
- It must be used solely for domestic purpose.
- The guarantee will be rendered invalid if the product is re-sold or has been damaged by inexpert repair.
- Specifications are subject to change without notice.
- The manufacturer disclaims any liability for the incidental or consequential damages.
- The guarantee is in addition to, and does not diminish your statutory or legal rights.

CUSTOMER SUPPORT

www.coreservice.co.uk

Call us +44 01904 947568

Email: support@coreservice.co.uk

Made in China